

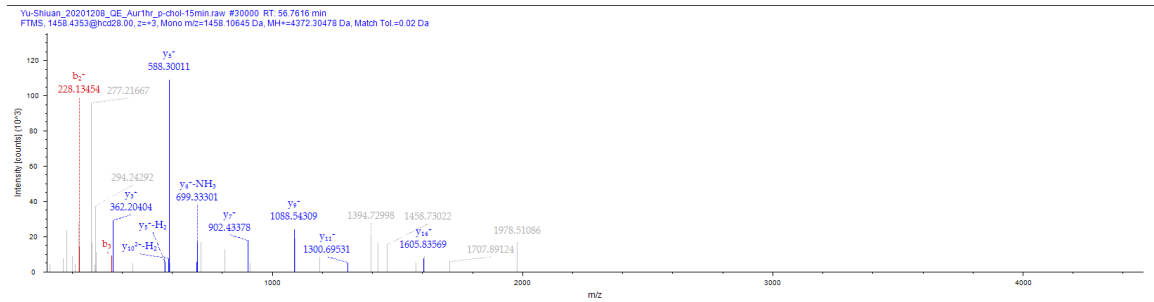
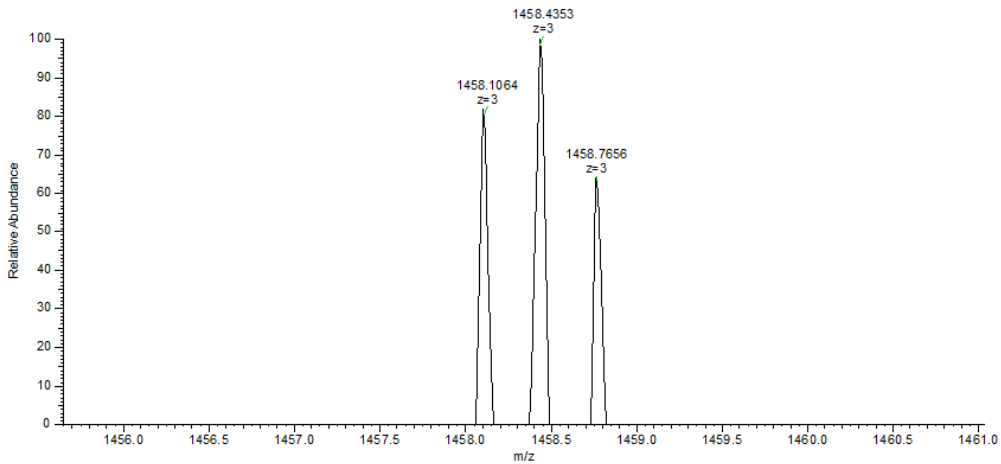
Peptide sequence: NLEQM⁺QNFVQLHTDGGAVLTVTPAHLVSVWQPESQK

Modifications: V5-Photocholesteroyl (+370.32360 Da)

Charge	m/z (Da)	Theo. Mass (Da)	Δ Mass (mmu)	MH+ (Da)	RT
+3	1458.10645	1458.11866	-12.21	4372.30478	56.7616

Fragment Ions	m/z (Da)	Theo. Mass (Da)	Δ Mass (mmu)
b₂⁺	228.13454	228.13427	+0.27
b₃⁺	357.17657	357.17686	-0.29
y₃⁺	362.20404	362.20341	+0.63
y₅⁺ - H₂O	570.28839	570.28820	+0.19
y₁₀⁺ - H₂O	585.30042	585.30111	-0.69
y₅⁺	588.30011	588.29877	+1.34
y₆⁺ - H₂O	698.34778	698.34678	+1.00
y₆⁺ - NH₃	699.33301	699.33080	+2.21
y₇⁺	902.43378	902.43666	-2.88
y₉⁺	1088.54309	1088.53710	+5.99
y₉⁺	1300.69531	1300.68958	+5.73
y₁₄⁺	1605.83569	1605.83837	-2.68

Yu-Shiuan_20201208_QE_Aur1hr_p-choi-15min #29992 RT: 56.75 AV: 1 NL: 3.53E+005
T: FTMS + p NSI Full lock ms [400.0000-1650.0000]



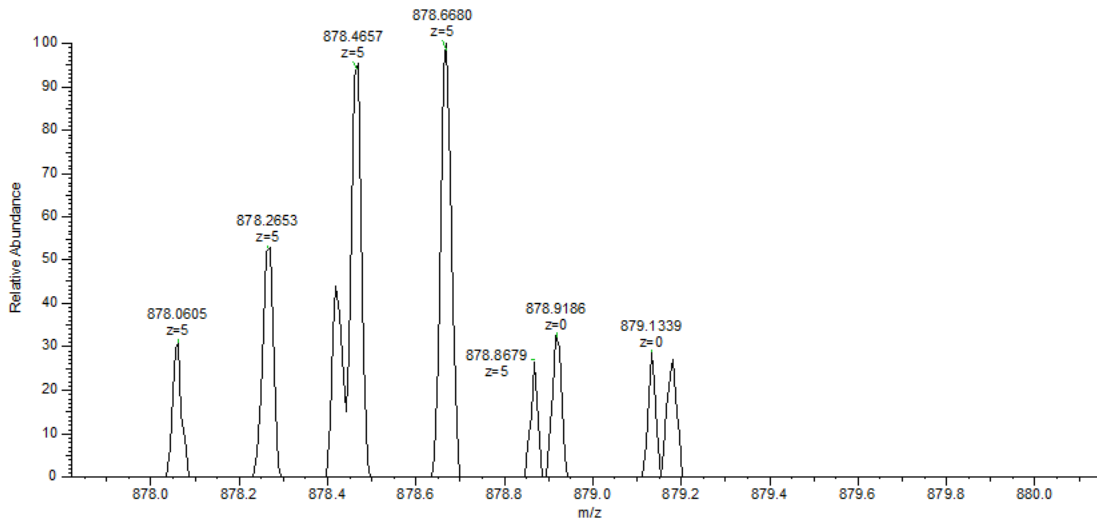
Peptide sequence: NLEMQNFVQLHTDGGAVLTVPAHLVSVWQPESQK

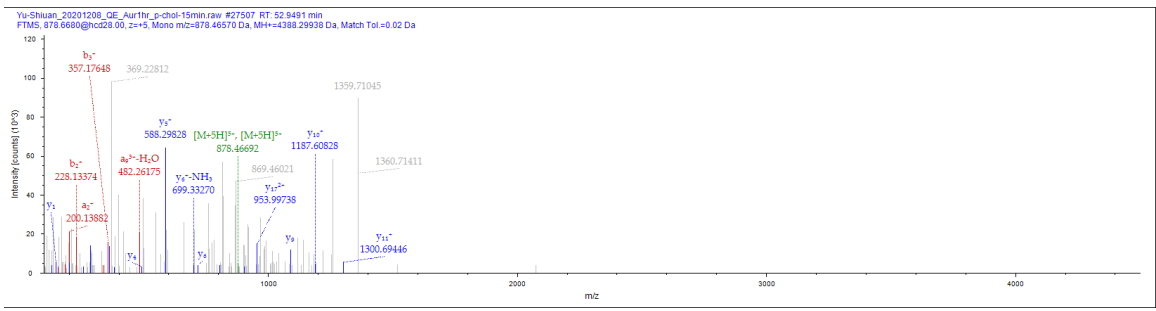
Modifications: Q4-Photocholesteroyl (+370.32360 Da), M5-Oxidation (+15.99492 Da)

Charge	m/z (Da)	Theo. Mass (Da)	Δ Mass (mmu)	MH+ (Da)	RT
+5	878.46570	878.47309	-7.39	4388.29938	52.9491

Fragment Ions	m/z (Da)	Theo. Mass (Da)	Δ Mass (mmu)
$y_1^+ - NH_3$	130.08606	130.08626	-0.20
y_1^+	147.11287	147.11280	+0.07
y_8^{5+}	201.12344	201.10684	+16.60
b_2^+	228.13374	228.13427	-0.53
$y_2^+ - NH_3$	258.14505	258.14483	+0.22
$y_5^{2+} - NH_3$	286.13953	286.13975	-0.22
b_3^+	357.17648	357.17686	-0.38
y_3^+	362.20328	362.20341	-0.13
y_{17}^{5+}	382.20865	382.20625	+2.40
y_4^+	491.24811	491.24600	+2.11
y_5^+	588.29828	588.29877	-0.49
$y_6^+ - NH_3$	699.33270	699.33080	+1.90
y_6^+	716.35675	716.35734	-0.59
y_{14}^{2+}	803.42438	803.42282	+1.56
y_7^+	902.42480	902.43666	-11.86
y_{17}^{2+}	953.99738	954.00471	-7.33
y_9^+	1088.54016	1088.53710	+3.06
y_{10}^+	1187.60828	1187.60551	+2.77
y_{11}^+	1300.69446	1300.68958	+4.88

Yu-Shiuan_20201208_QE_Aur1hr_p-cho1-15min #27503 RT: 52.94 AV: 1 NL: 9.20E+005
T: FTMS + p NSI Full lock ms [400.0000-1650.0000]





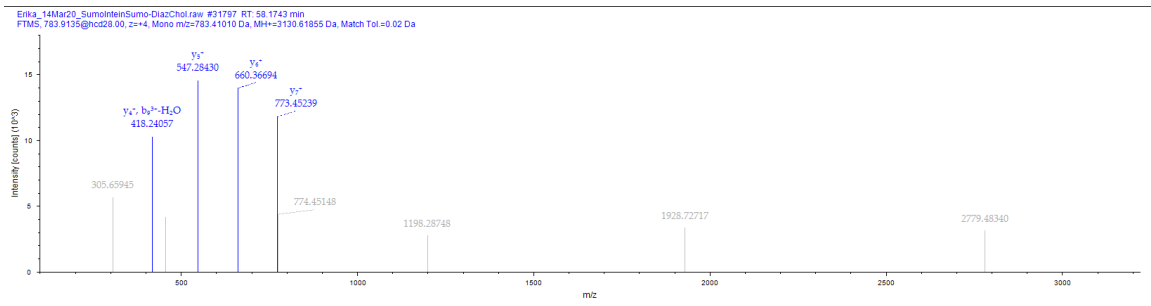
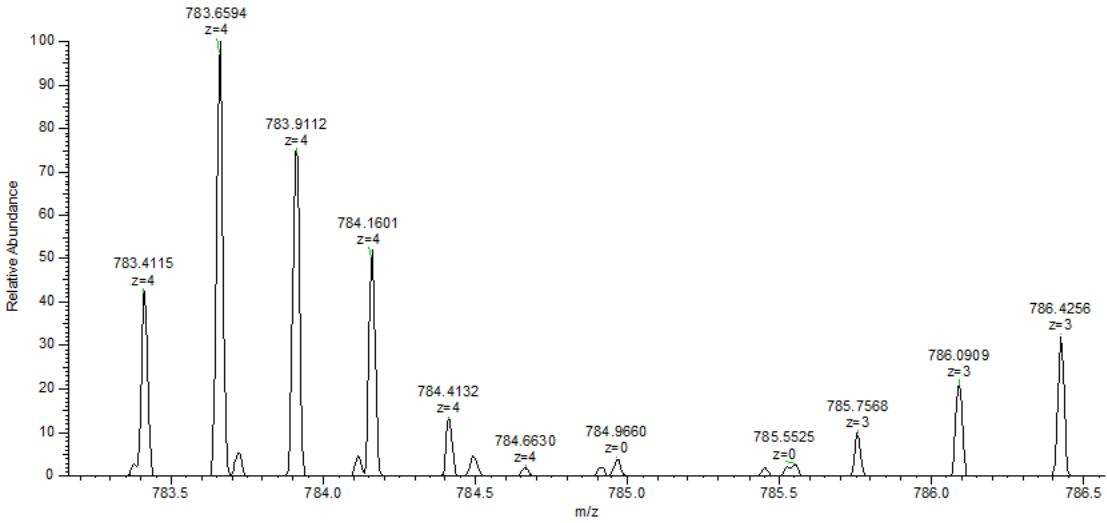
Peptide sequence: SDSSISSHVHGCFPESTALLESGVR

Modifications: S6-Photocholesteroyl (+370.32360 Da), C12-Carbamidomethyl (+57.02416 Da)

Charge	m/z (Da)	Theo. Mass (Da)	Δ Mass (mmu)	MH+ (Da)	RT
+4	783.41010	783.40869	+1.4	3130.61855	58.1743

Fragment Ions	m/z (Da)	Theo. Mass (Da)	Δ Mass (mmu)
y_4^+	418.24057	418.24086	-0.29
$b_9^{3+} - H_2O$	418.24057	418.24445	-3.88
y_5^+	547.28430	547.28345	+0.85
y_6^+	660.36694	660.36752	-0.58
y_7^+	774.45239	773.45158	+0.81

Erika_14Mar20_SumolnteinSumo-DiazChol #31789-31811 RT: 58.16-58.2 AV: 6 NL: 1.44E+005
T: MS

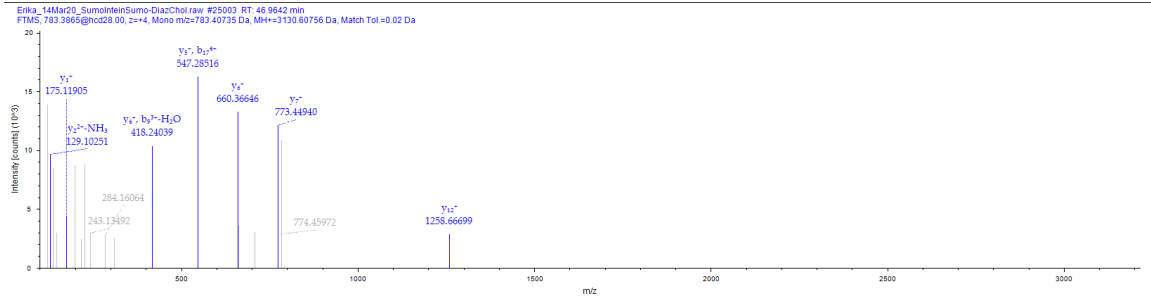


Peptide sequence: SDSSISSHVHGCFTPESTALLESGVR

Modifications: S7-Photocholesteroyl (+370.32360 Da), C12-Carbamidomethyl (+57.02416 Da)

Charge	m/z (Da)	Theo. Mass (Da)	Δ Mass (mmu)	MH+ (Da)	RT
+4	783.40735	: 783.40869	-1.35	3130.60756	46.9642

MS1: monoisotopic peak only



Peptide sequence: VLTVTPAHLVSVWQPESQK

Modifications: V1, V4, T5-Photocholesteroyl (+370.32360 Da)

Charge	m/z (Da)	Theo. Mass (Da)	Δ Mass (mmu)	MH+ (Da)	RT
+3	1077.37585	1077.38000	-4.14	3230.11301	51.8983

Yu-Shiuan_20201208_QE_Aur1hr_p-cho1-15min #26836 RT: 51.89 AV: 1 NL: 9.39E+005
T: FTMS + p NSI Full lock ms [400.0000-1650.0000]

