

Supplementary Materials for  
**A seasonally invariant deep transform for visual terrain-relative navigation**

Anthony T. Fragoso *et al.*

Corresponding author: Anthony T. Fragoso, [afragoso@caltech.edu](mailto:afragoso@caltech.edu)

*Sci. Robot.* **6**, eabf3320 (2021)  
DOI: 10.1126/scirobot.abf3320

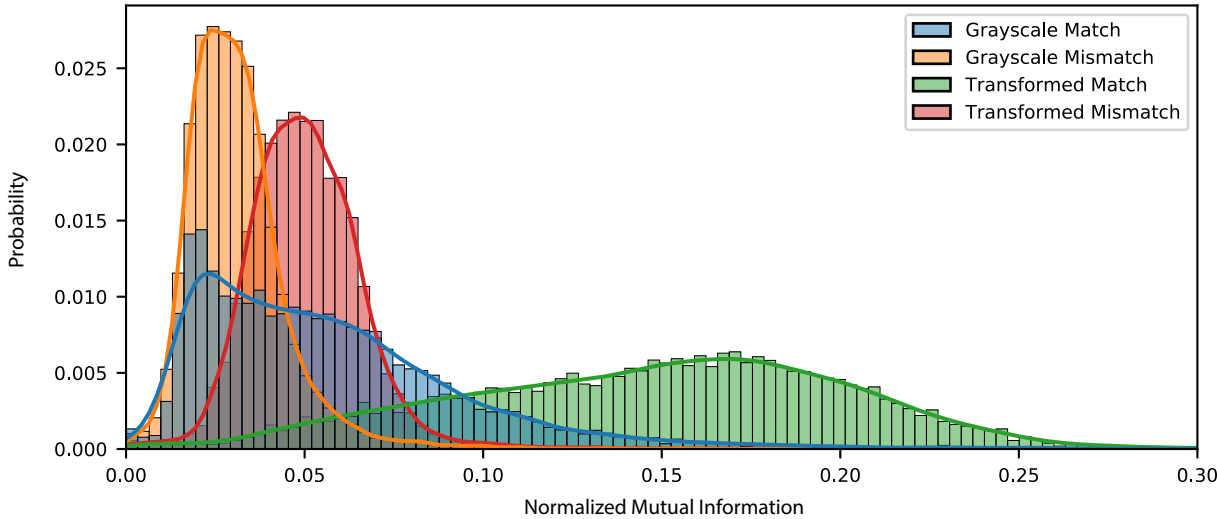
**The PDF file includes:**

Fig. S1

**Other Supplementary Material for this manuscript includes the following:**

Movies S1 to S3

# Supplementary Material



**Fig. S1. Distributions of mutual information values for mismatched and matched  $300 \times 300$  image chips evaluated on a combined Connecticut and Rockies test set.**