

Supplemental Material for:

Deposition of Electrically Conductive Zirconium Monoxide (ZrO) via Plasma Spray-Physical Vapor Deposition (PS-PVD)

Bryan J. Harder^{1,*}, Brian Good¹, Michael Schmitt¹, Ben Kowalski¹, Giacomo Koszegi², Matthew T. Johnson², Katherine T. Faber²

¹NASA Glenn Research Center, Cleveland OH 44135

²Division of Engineering and Applied Science, California Institute of Technology, Pasadena CA 91125

*Correspondence: bryan.harder@nasa.gov; Tel.: 216-433-8607

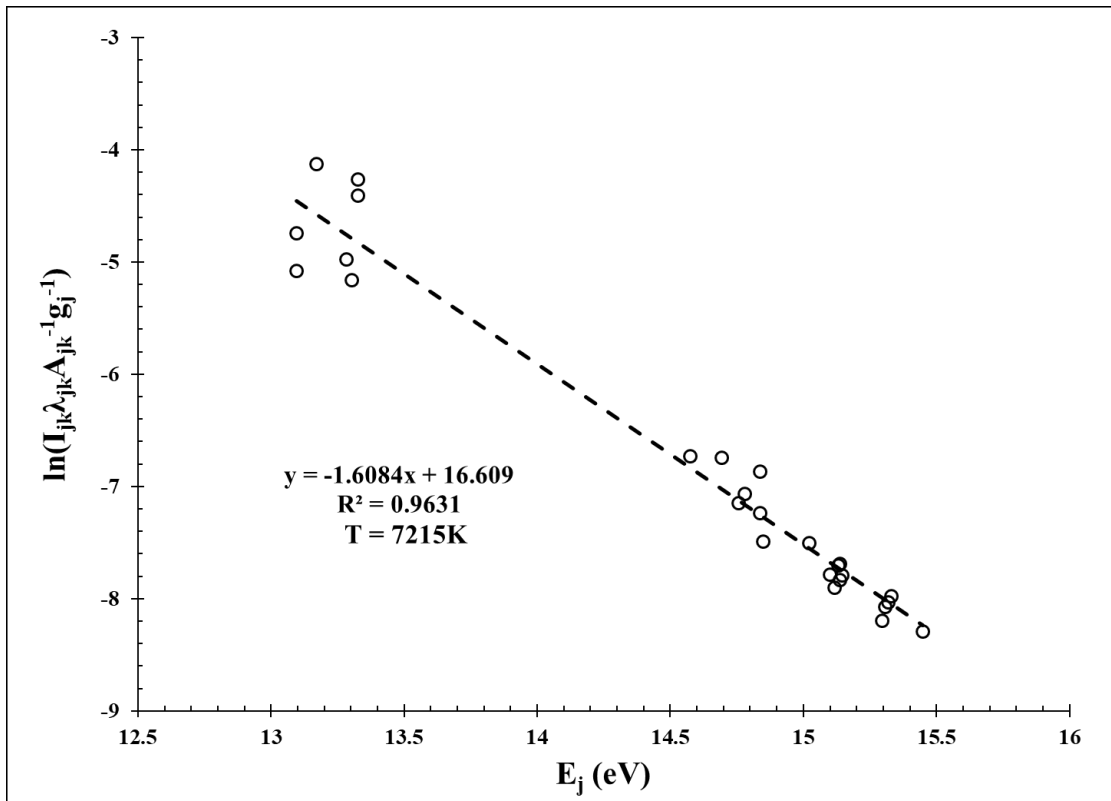


Fig. S1: Representative Boltzmann plot and the associated regression fit of the Ar I emission lines generated from deposition conditions found in Table 1.

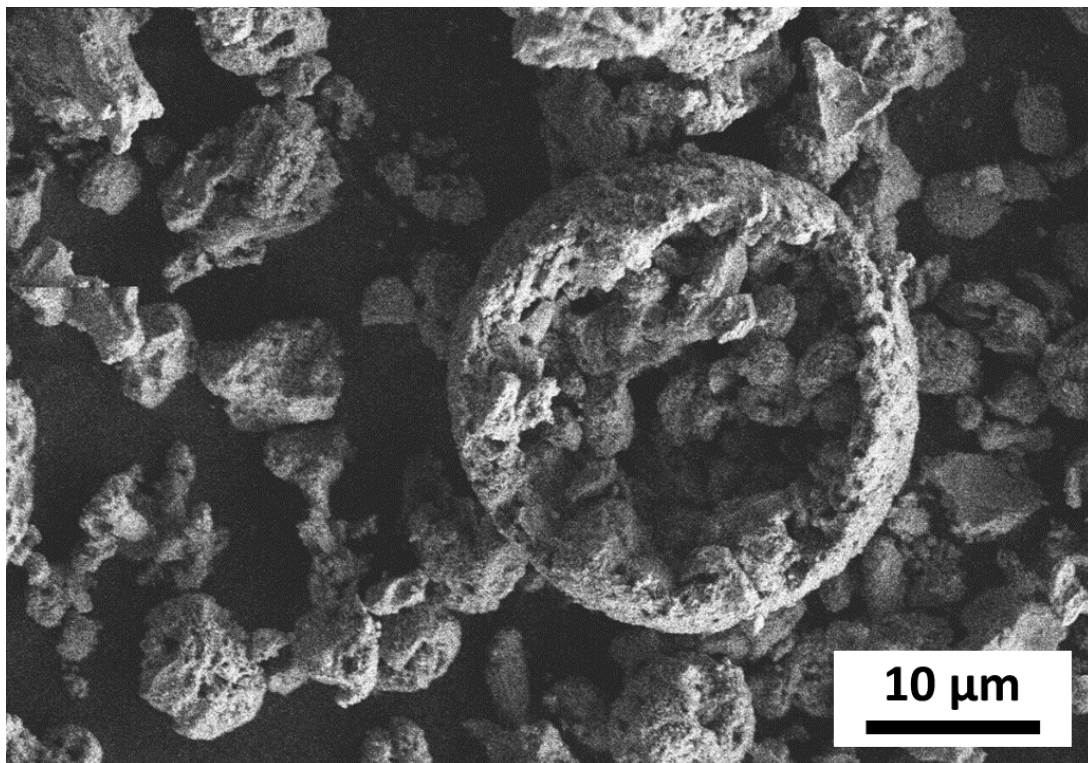


Fig. S2: An image of the as-received Metco 6700 powder.

Table S1: Hot stage set point and estimated surface temperature based on CeO_2 lattice parameter.

Set Point (K)	CeO_2 unit cell length (\AA)	Estimated Surface Temperature (K)
298	5.410010	298
323	5.411554	324
373	5.414163	367
423	5.416655	408
473	5.419656	457
523	5.422422	503
573	5.424189	532
623	5.427343	584
673	5.430163	631
723	5.432804	674
773	5.435742	723
873	5.441702	821
1073	5.454192	1027
1273	5.464993	1205
1473	5.465046	1206