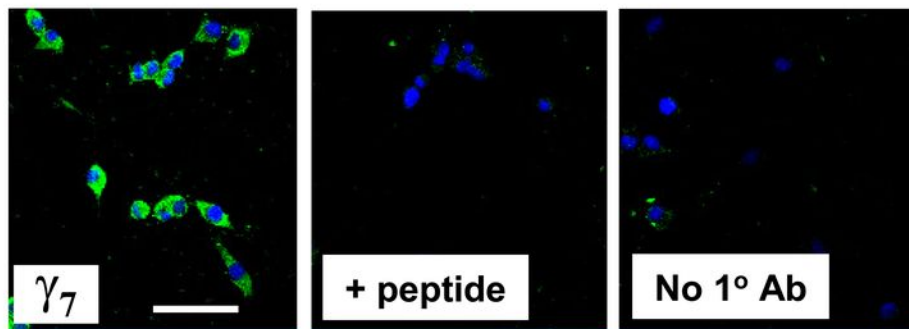


Supplemental Figure 5 Demonstration of endogenous γ_7 in PC12 cells



Immunoreactivity to endogenous γ_7 (green) was detected in all permeabilized PC12 cells (left), using the anti- γ_7 C-terminal tail Ab. This was abolished by pre-incubation with 10-fold molar excess of the immunizing peptide (center). There was also no immunofluorescence detected in cells in which the anti- γ_7 Ab was omitted (right). The nuclear stain DAPI was used as a cell marker. Scale bar 50 μm applies to all images.