

A High-Precision Optical Polarimeter to Measure Inclinations of High-Mass X-Ray Binaries

SLOANE J. WIKTOROWICZ¹ AND KEITH MATTHEWS²

Received 2008 September 24; accepted 2008 October 29; published 2008 November 19

ABSTRACT. We present commissioning data for the POLISH instrument obtained on the Hale 5-m telescope. The goal of this high-precision polarimeter is to constrain orbital inclination of high-mass X-ray binaries and therefore to obtain independent mass estimates for their black-hole companions. We have obtained photon shot-noise-limited precision on standard stars, and we have measured the polarization of bright stars at the part-per-million level on a nightly basis. Systematic effects have been reduced to less than 1% of the measured polarization for polarized sources and to the part-per-million level for weakly polarized sources. The high sensitivity of this instrument to asymmetry suggests that valuable contributions will be made in many other fields, including studies of extrasolar planets, debris disks, and stellar astrophysics.

1. INTRODUCTION

While most astrophysical objects require many parameters in order to be fully described, black holes are unique in that only three parameters suffice: mass, spin, and charge. Mass and spin describe the black hole’s gravitational field and event horizon location. Therefore, black holes provide a rare opportunity for theory and observation to jointly pursue a few quantities to completely describe one of the most exotic kinds of objects in the Universe.

Though modeling of the X-ray spectral energy distribution is somewhat effective in constraining black-hole spin (McClintock et al. 2006), important constraints on black-hole mass exist in the case of high-mass X-ray binaries (hereafter HMXBs). These binaries consist of an O- or B-type supergiant and a black hole or neutron star. The most well studied of these, Cygnus X-1, is thought to consist of a $40 \pm 10 M_{\odot}$, O9.7Iab star and a $13.5\text{--}29 M_{\odot}$ black hole at a distance of 2.2 ± 0.2 kpc (Ziółkowski 2005). While the constraints on the mass of the compact object are tight enough to declare that it is a black hole, they are insufficient to permit precise modeling of the progenitor star’s mass. We have commissioned a polarimeter on the Hale 5-m telescope at Palomar Observatory in California to provide an independent method for determining black-hole mass. This polarimeter has the potential to constrain the mass of the Cygnus X-1 black hole to a few solar masses.

2. BLACK-HOLE MASS FROM POLARIMETRY

A wealth of radial velocity data exists for Cygnus X-1 (Gies et al. 2003) and other HMXBs. However, in the same way that precise masses are elusive for nontransiting extrasolar planets, determination of precise black-hole mass is hindered by unknown orbital inclination. This is evidenced by the mass function, which is the end product of radial velocity observations. For Cygnus X-1, Gies et al. (2003) quote the following value for the mass function:

$$f(M_X) = \frac{M_{\text{opt}} \sin^3 i}{q(1+q)^2} = 0.251 \pm 0.007 M_{\odot}. \quad (1)$$

Here, M_X is the mass of the black hole, M_{opt} is the mass of the visible binary component, i is the system inclination, and q is the mass ratio of the visible component to the black hole. Thus, an observational technique that constrains orbital inclination can take advantage of radial velocity data and offer an estimate of black-hole mass.

Because system polarization is a geometric effect, the polarization of an HMXB system can be used to determine geometric information about the system, such as orbital inclination. The effective temperature of the supergiant in an HMXB is $T_{\text{eff}} \approx 30,000$ K, which is hot enough to ionize photospheric hydrogen. This generates a high density of free electrons that Thomson-scatter emitted light from the supergiant. While net linear polarization from a spherical cloud of free electrons is zero, asymmetry in the system causes net polarization (Brown & McLean 1977). The tidal effects of the black hole cause such an asymmetry in the circumbinary envelope, and the orbital modulation of polarization is the key to determining orbital inclination. For instance, consider a face-on HMXB with zero

¹ Planetary Science Department, California Institute of Technology, Pasadena, CA; Current address: Astronomy Department, University of California, Berkeley, CA; sloane@berkeley.edu.

² Physics Department, California Institute of Technology, Pasadena, CA.

eccentricity and an optically thin circumbinary envelope (Figure 1a). The total amount of observed, polarized light is independent of orbital phase, and the degree of polarization is therefore constant. However, the angle of net polarization, which is perpendicular to the scattering plane, rotates as the binary progresses in its orbit.

In contrast, for a nearly edge-on geometry the degree of polarization varies significantly throughout the orbit, while the angle of net polarization is roughly constant (Fig. 1b). Therefore, the modulation of the degree and angle of net polarization is a unique measure of orbital inclination for synchronously rotating HMXBs. Combining equations (1) and (2) from Friend & Cassinelli (1986) and equation (2) from Brown et al. (2000), the polarization of an optically thin, axisymmetric envelope due to Thomson scattering is

$$P = \frac{3}{16} \sigma_T (1 - \cos^2 \phi_{\text{orb}} \sin^2 i) \times \int_{r_1}^{r_2} \int_{\mu_1}^{\mu_2} n_e(r) \left(1 - \frac{R^2}{r^2}\right)^{1/2} (1 - 3\mu^2) dr d\mu. \quad (2)$$

Here, σ_T is the Thomson-scattering cross section, μ is the cosine of the polar angle, the electron number density as a function of radial coordinate r is $n_e(r) = n_0 R^2 / r^2$, n_0 is a scaling constant, stellar radius is R , system inclination is i , and orbital phase in radians is ϕ_{orb} . Two polarization periods occur per orbital period because of the $\cos^2 \phi_{\text{orb}}$ term.

This technique has been utilized by a few groups (Kemp et al. 1979; Dolan & Tapia 1989; Wolinski et al. 1996), and

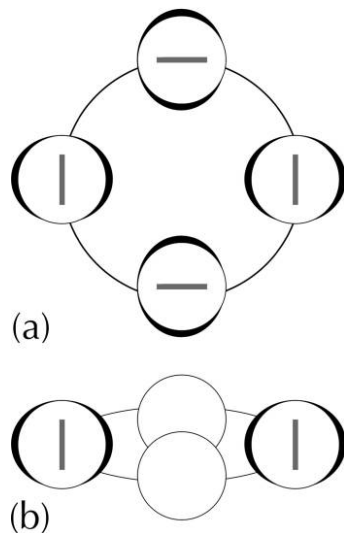


FIG. 1.—Orbital modulation of system polarization for HMXBs. The degree of polarization is represented by the black tidal bulges (the exact cause of polarization is irrelevant to this figure), and position angle of net polarization is given by the orientation of the gray lines. The face-on case is shown in (a), and the edge-on case is shown in (b). The circumbinary envelopes have been drawn displaced from the center of mass for clarity.

Cygnus X-1 has been found to have variable polarization of order $\Delta P \approx 0.1\%$ with respect to its unpolarized flux. However, measurement precision from the above groups is of order 1 part in 10^4 . The derived inclination estimates were questioned by the community on the grounds that significant underestimation of error occurred because of limited measurement precision (Milgrom 1979; Aspin et al. 1981). Measuring inclination to 5° requires polarimetric precision of 1 part in 10^4 to 1 part in 10^7 , depending on system inclination (Aspin et al. 1981). This requires at least 10^8 to 10^{14} detected photons, which necessitates the use of large telescopes. Because our system combines a high-precision instrument with a 5-m telescope, we aim to measure the polarimetric variability of Cygnus X-1 to better than 1 part in 10^4 .

3. THE POLISH INSTRUMENT

Polarimeters require the following fundamental components: a polarization modulator, an analyzer, a detector, and a demodulator. The modulator induces a known, periodic characteristic to the unknown polarization of the input beam. The analyzer converts modulation in polarization to modulation in the beam's intensity, because most detectors are sensitive to intensity and not polarization. Finally, the demodulator extracts the component of the detector's output that varies at the known frequency of the modulator to reject noise. See Figure 2 for a block diagram, Figure 3 for a ray trace diagram, and Figure 4 for photographs of the instrument.

Traditionally, the modulator is a rotating half-wave plate that rotates the linear polarization of the incident beam. The highest modulation frequency attainable with this component is of order 100 Hz, which is not fast enough to freeze out atmospheric turbulence or to mitigate electronic $1/f$ noise. Additionally,

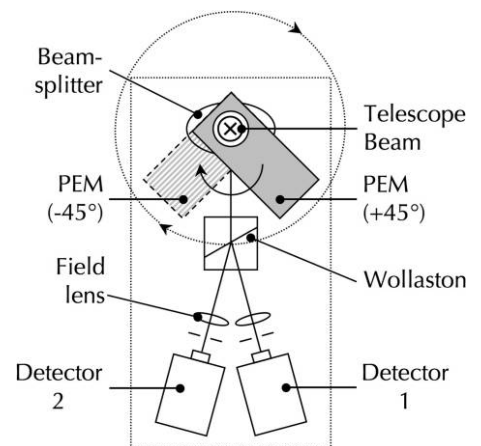


FIG. 2.—Plan view of the POLISH optical path. The telescope beam is directed into the page through the center of the PEM aperture (the “X” in the figure). The PEM is rotated to $\theta_{\text{PEM}} = \pm 45^\circ$ with respect to the centerline, and the instrument itself (dotted box) can be independently rotated on the telescope through $\Delta\phi = 360^\circ$. Field stops are located between the field lenses and detectors.

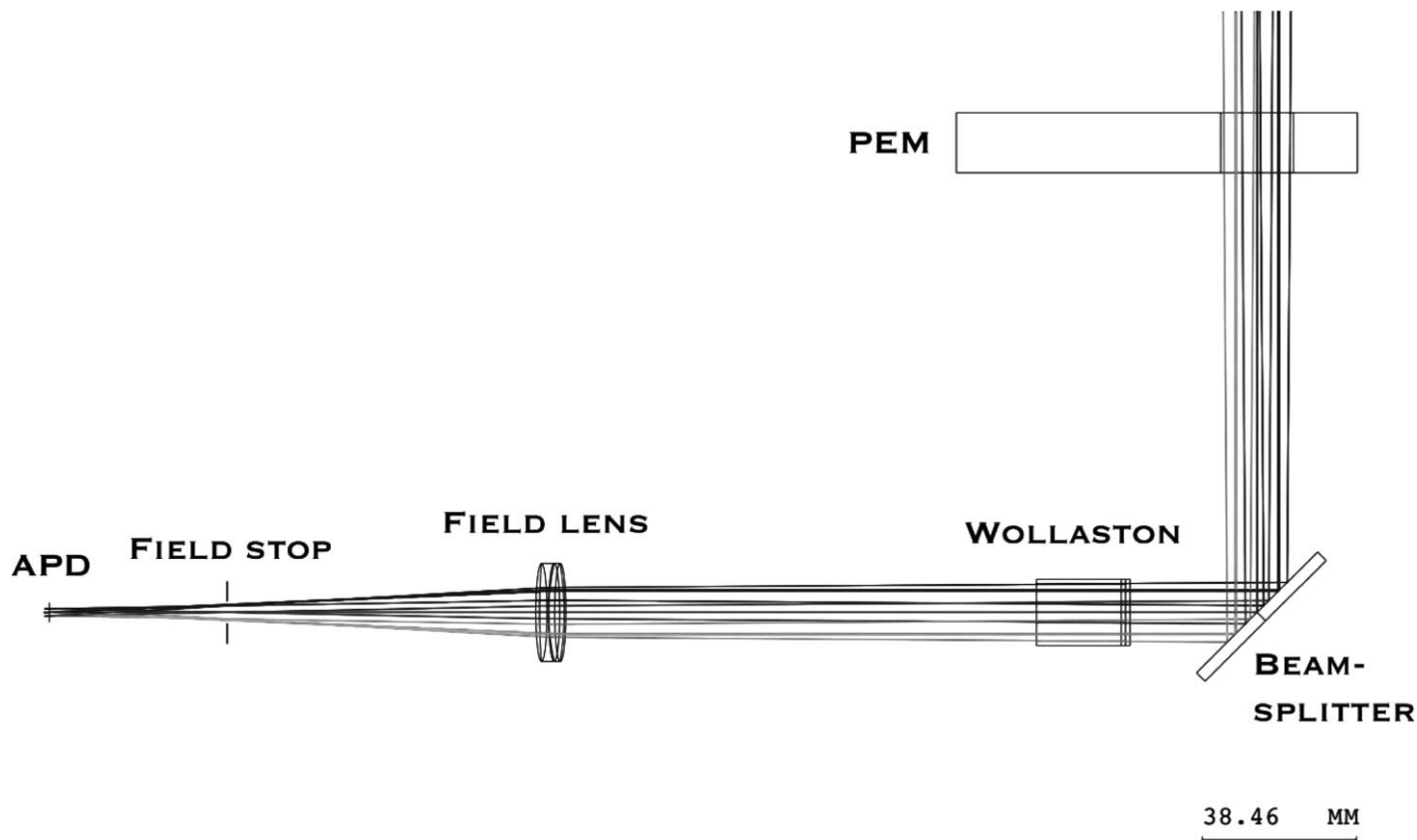


FIG. 3.—Ray trace diagram of the POLISH optical path. The telescope beam enters the instrument from the top right of the figure.

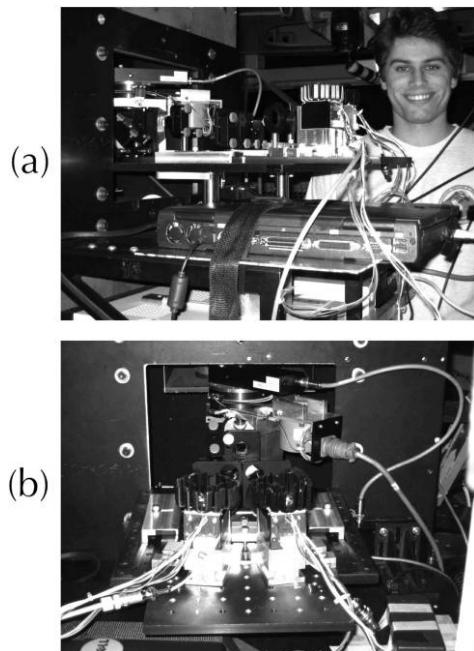


FIG. 4.—Photographs of the POLISH instrument mounted at the Cassegrain focus of the Hale 5-m telescope.

spatial inhomogeneity in both the retardance and cleanliness of the plate can introduce spurious signals, because the beam samples different sections of the half-wave plate at different times. The polarization goal for our instrument, Polarimeter for Inclination Studies of High-Mass X-Ray Binaries/Hot Jupiters (POLISH), is 1 part in 10^6 on bright, unpolarized stars, which necessitates the use of a photoelastic modulator (hereafter PEM, Kemp 1969).

A PEM is a bar of optical materials (fused silica for use in optical light) in which a resonant acoustic signal at a frequency of tens of kilohertz is induced. The stress-birefringent property of the silica causes time-varying, sinusoidal retardance of the component of polarization oriented at $\pm 45^\circ$ with respect to the compression/extension axis, while the polarization components at 0° and 90° experience no retardance. that is, a PEM at $\theta_{\text{PEM}} = \pm 45^\circ$ with respect to the Stokes Q axis will cause retardance to the Q/I Stokes parameter but not to the U/I parameter. Because peak retardance is a function of the amplitude of the acoustic signal, both peak retardance and wavelength of peak retardance can be easily modified. We set the retardance amplitude to $\beta_0 = 0.383$ waves at 500 nm wavelength to give uniform PEM efficiency for both low and high linear polarizations. This also causes linear polarization to be directly

proportional to the amplitude of the AC signal divided by the mean DC signal, which is derived in Appendix A.

The high frequency PEM modulation strongly reduces both atmospheric turbulence and electronic $1/f$ noise. Additionally, the beam always samples the same optical path during the modulation, because the strain on the modulator element is only of order 10 parts per 10^6 (Kemp 1969). Operationally, a PEM is the opposite of a rotating half-wave plate: while the plate has a constant retardance and time-variable fast axis orientation, a PEM has constant fast axis orientation but time-variable retardance. Because the absolute value of the PEM's retardance determines the polarization of the beam at any instant, compression and extension of the fused silica bar affect the beam identically. Therefore, linear polarization is modulated at twice the frequency of the PEM modulation. We use the I/FS50 PEM and PEM100 controller from Hinds Instruments, Inc. The modulation frequency of this PEM is 50 kHz, and modulation of linearly polarized light occurs at 100 kHz.

Directly downstream from the PEM is a 95R/5T beam splitter at 45° incidence that allows $\approx 5\%$ of the stellar flux to fall on a Xyberon CCD camera for on-axis guiding, while the remaining $\approx 95\%$ is reflected into a Wollaston prism toward the detectors. The beam splitter has a 50-mm diameter, fused silica substrate from Edmund Optics with a custom 400 to 700 nm coating from Opticorp, Inc. The surface accuracy on the substrate is one-tenth of a wavelength.

We utilize a two-wedge, calcite Wollaston prism from Karl Lambrecht, Inc., as the analyzer. This prism separates each component of a single Stokes parameter into two beams. That is, the $+Q/I$ (or $+U/I$) component is split into one beam, and the $-Q/I$ (or $-U/I$) component is in the other beam. Both beams have equal deviation of 7.5° from the optical axis, which allows the optical layout to be symmetric with respect to the optical axis. A two-wedge prism is used because the larger beam deviation of a three-wedge design would cause the instrument package to be larger than necessary. The surfaces of the Wollaston prism have an antireflection coating in the wavelength range of 400 to 700 nm, and the transmission in V band is $\approx 97\%$ per surface. By injecting light through a linear polarizer with known fast axis orientation and then through the Wollaston prism, we find that the left beam seen from the detectors is vertically polarized ($-Q/I$ when projected onto the sky for a Cassegrain ring angle of 0°). The right beam is horizontally polarized ($+Q/I$ at 0° ring angle).

Each Wollaston beam then impinges on an $f/5.6$, MgF_2 antireflection-coated field lens from Melles Griot. These lenses image the telescope secondary mirror onto the detectors, and they ensure starlight is uniformly spread over the detector active area even in the presence of image wander. Field stops are located in the image plane, after the field lenses, but these are not currently used because contamination of stellar polarization from the sky field is not significant. The beams reach the de-

tectors with a diameter of ≈ 3 mm, which underfills all detectors.

Because Cygnus X-1 has V magnitude ≈ 9 , but the polarization standard stars observed can be as bright as $V \approx 3$, POLISH has two interchangeable pairs of detectors. Stars fainter than $V \approx 7$ are detected at a higher signal-to-noise ratio with the pair of Hamamatsu H9307-04 photomultiplier tubes (PMTs), while objects brighter than this will destroy the PMTs. Brighter stars are observed with custom-made Advanced Photonix SD197-70-72-661 (red enhanced) and SD197-70-74-661 (blue enhanced) avalanche photodiode modules (APDs). The high quantum efficiency of APDs is desirable on bright stars to minimize photon shot noise, while the low dark current of PMTs is desirable on fainter stars to minimize detector noise.

The detectors are not downstream from spectral filters, and they are integrated light detectors in both spatial and spectral senses. Spatial resolution is unnecessary, as the angular size of the Cygnus X-1 system is much smaller than the atmospheric seeing disk. Spectral resolution, while desirable, would seriously degrade the precision attainable with this instrument. Such resolution must be left for future generations of POLISH. Neglecting detector quantum efficiency, the instrumental throughput is calculated to be 74%, 77%, 58%, and 23% in B , V , R , and I bands. The throughput of the telescope/instrument system, again neglecting detector response, is calculated to be 60%, 62%, 47%, and 19% in those bands.

The PMTs are identical, side-on modules with active area dimensions 3.7×13.0 mm. Their quantum efficiencies are quoted from the manufacturer to be 18%, 15%, 7%, and 0% in B , V , R , and I bands. The FWHM of the PMT bandpass is 475 nm (200 to 675 nm), but atmospheric transparency is, of course, low shortward of about 400 nm. Thus, the PMTs detect broadband BV light. The PMT gain can be set by a potentiometer, and we set this gain to $G = 5 \times 10^6$ for all observations. The modules also have a $B = 200$ kHz bandwidth amplifier with transimpedance $T_A = 10^5$ V/A. The quoted output noise voltage resulting from dark current is $\sigma'_V = 10$ (typical) to $100 \mu\text{V}$ (maximum), which implies a noise equivalent power of $\text{NEP} = 0.04$ to $0.13 \text{ fW}/\sqrt{\text{Hz}}$. Dark current is $i'_d = 0.1$ nA.

The APDs are optimized for 100 kHz operation and have 5 mm diameter, circular active areas. The APDs are not identical, as one beam is sampled by the red enhanced module while the other is sampled by the blue enhanced one. The quantum efficiencies for the red enhanced module are quoted as 58%, 73%, 78%, and 46% in B , V , R , and I bands (Fig. 5). The FWHM of the bandpass for the red-enhanced APD is 550 nm (350 to 900 nm), which corresponds to broadband $BVRI$ light. The blue enhanced module is quoted to have 75%, 82%, 67%, and 35% quantum efficiencies. The FWHM of the bandpass for the blue enhanced APD is about 500 nm (350 to 850 nm), which corresponds to broadband BVR light. The red module operates with an observed gain of $G = 220$, and

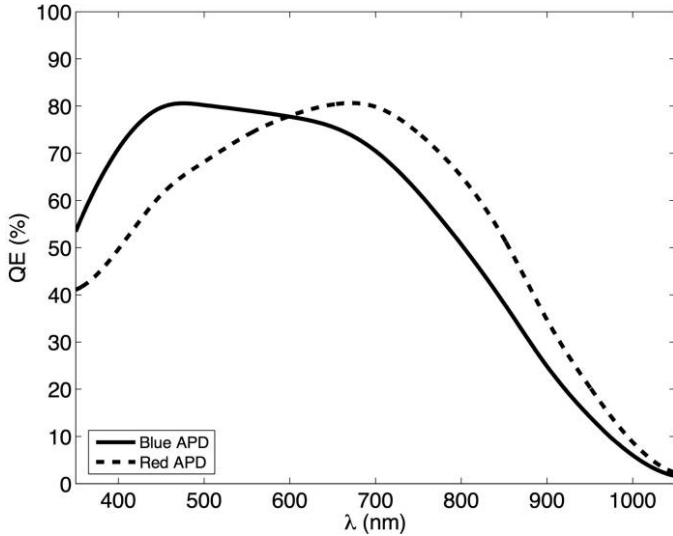


FIG. 5.—Quantum efficiency curves for the red enhanced and blue enhanced APDs (detectors 2 and 1, respectively).

the blue module operates at a quoted gain of $G = 300$. Transimpedance is $T_A = 4 \times 10^6$ V/A for both modules, and amplifier bandwidth is $B = 100$ kHz for the red enhanced and $B = 90$ kHz for the blue enhanced modules. After the APD chip is thermoelectrically cooled to 0° C, dark current is measured to be $i'_d = 4.5$ nA and 3.5 nA at the output of the red and blue modules, respectively. Therefore, the noise equivalent power for each module is $NEP = 39$ fW/ $\sqrt{\text{Hz}}$ and 9.7 fW/ $\sqrt{\text{Hz}}$, respectively. Each detector is supplied ± 12 V and +5 V, and a 12 V case fan blows heat from the APD heat sinks.

The demodulator picks out the component of the detected signal that varies at the reference frequency and ideally rejects signals at all other frequencies. The demodulator can either be software or hardware; POLISH makes use of one Stanford Research SR830 digital, dual-phase lock-in amplifier for each detector. The PEM controller sends a square wave reference signal to the lock-in amplifiers at twice the frequency of the PEM modulation, and each lock-in amplifier recovers X (in phase with reference signal) and Y (90° out of phase with the reference signal) components of the detector signal. Together, X and Y determine amplitude R and phase Φ according to the following:

$$R = \sqrt{2(X^2 + Y^2)}, \quad (3a)$$

$$\Phi = \frac{1}{2} \arctan(Y, X). \quad (3b)$$

The lock-in amplifiers record the rms components of the in-phase and quadrature phase signals, and so multiplication by a factor of $\sqrt{2}$ is necessary to determine the amplitude of the AC signal. The notation of the argument of the arctangent is

meant to account for the signs of X and Y when determining phase.

Signal phase allows direct measurement of the sign of each Stokes parameter (e.g., $+Q/I$ versus $-Q/I$). This is important, because insensitivity to sign would preclude direct measurement of more than 90° of rotation of the Cygnus X-1 system. Both AC and DC signals from the detector must be recorded to measure polarization (Appendix A). The AC signals are recorded by the lock-in amplifiers, and each detector's DC signal is recorded by a separate HP 34401A digital voltmeter. To reject 60 Hz noise and its harmonics, each DC reading by the voltmeters consists of an integration over 10 power line cycles. Thus, the voltmeters record data at 6 Hz. The lock-in amplifiers may only sample the AC signal at powers of two in frequency, so we choose to record the AC data at 8 Hz. The discrepancy in sampling rates between AC and DC data is not important, because AC data should be normalized by mean DC data and not in a point-by-point fashion.

In order to Nyquist-sample the AC data, we set the lock-in time constants to 30 ms. This gives an effective noise bandwidth of $ENBW = 2.6$ Hz. Therefore, we sample the AC data $8/2.6 \approx 3.1$ times per effective time constant, which satisfies the Nyquist criterion and reduces aliasing. The lock-in amplifiers thus measure the components of the AC signal with frequencies bounded by $f_0(1 \pm 1.3 \times 10^{-5})$, where f_0 is the reference frequency in Hz. The auxiliary DC output of one lock-in amplifier is connected to a chopping motor on the telescope secondary mirror, which allows the secondary mirror to chop north to a sky field for sky subtraction of both AC and DC data.

POLISH is located at Cassegrain focus to ensure beam reflections of about 180° , and it samples the $f/72$ beam. These qualities minimize telescope polarization. To minimize instrument polarization, the PEM is the first instrumental optic encountered by the beam. The lock-in amplifiers and voltmeters are controlled by a laptop, which is mounted to the instrument, via the GPIB interface. Matlab R2006a from The MathWorks, Inc., is used to control the voltmeters and lock-in amplifiers, chop the secondary mirror, and rotate the Cassegrain ring to allow access to both linear Stokes parameters.

4. OBSERVING STRATEGY

A similar, albeit larger, instrument named PlanetPol is mounted on the 4.2-m William Herschel Telescope in La Palma, Spain (Hough et al. 2006, hereafter HLB06). The goal of this instrument is to detect the modulation of linear polarization caused by stellar flux scattered by hot Jupiters. This observation requires polarimetric precision of 1 part per 10^6 to 1 part in 10^7 (Seager et al. 2000; Stam et al. 2004), which is a precision nearly achievable with PlanetPol on the brightest stars. We observed many of the polarized and unpolarized standard stars from HLB06 in addition to others from the combined polarimetric catalog of Heiles (2000). A list of the stars observed is given in Table 1, and polarization values in parenthesis represent

TABLE 1
OBSERVED STANDARD STARS

Name	Alt. Name	RA	Dec	P (%)	Θ ($^\circ$)	Ref	V	Type
Algenib ^a	γ Peg	00 13 14.23	+15 11 00.9	0.0630(10)	118.1(5)	1	2.83	B2IV
HD 7927	ϕ Cas	01 20 04.92	+58 13 53.8	3.232(53)	94.0(5)	1	5.01	F0Ia
HD 9270	η Psc	01 31 29.07	+15 20 44.8	0.0060(30)	158(14)	1	3.63	G7IIa
HR 5854	α Ser	15 44 16.07	+06 25 32.3	0.00043(10)	...	2	2.64	K2IIIb
HD 147084	\circ Sco	16 20 38.18	-24 10 09.6	3.490(35)	32.1(3)	1	4.55	A4II/III
HD 154445	SAO 141513	17 05 32.24	-00 53 31.7	3.420(24)	90.2(2)	1	5.64	B1V
u Her ^b	HD 156633	17 17 19.57	+33 06 00.4	0.0(2)	...	1	4.80	B1.5Vp+
γ Oph ^c	HD 161868	17 47 53.56	+02 42 26.3	0.0080(10)	33.3(3.6)	1	3.75	A0V
HD 157999	σ Oph	17 26 30.98	+04 08 25.1	1.010(35)	85.9(1.0)	1	4.34	K3Iab
HD 187929 ^d	η Aql	19 52 28.37	+01 00 20.4	1.685(3)	94.2(1)	2	3.5–4.3	(F6.5–G2)Ib
HD 204827	SAO 33461	21 28 57.70	+58 44 24.0	5.44(20)	59.0(1.1)	1	8.00	O9.5V
HD 212311	SAO 34361	22 21 58.55	+56 31 52.8	0.02(5)	...	1	8.12	A0V
HR 8974 ^e	γ Cep	23 39 20.85	+77 37 56.2	0.00052(22)	...	2	3.23	K1IV

NOTES.—Heiles (2000) polarization data are quoted for V band, and HLB06 polarizations are measured in the wavelength range of 625 to 950 nm.

^a β Cepheid, pulsator.

^b β Lyrid, eclipsing binary.

^c Debris disk host.

^d δ Cepheid, pulsator.

^e Extrasolar planet host.

REFERENCES.—(1) Heiles (2000); (2) HLB06.

the 1σ uncertainty in the last two digits of the mean value. Polarization reference is given in the “Ref” column. V band magnitude and spectral type of the δ Cepheid star HD 187929 are from Bastien et al. (1988) and Oke (1961), respectively. The spectral type of HD 212311 is from Schmidt et al. (1992). All other positional and spectral information is from the SIMBAD database. Observations of Cygnus X-1 itself will be given in a forthcoming paper.

After the target star is acquired, a measurement with 15 s duration is initiated on both voltmeters simultaneously with a measurement for about 30 s on both lock-in amplifiers. For the second half of the 30 s lock-in amplifier measurements, the voltmeters transmit data to the laptop. The secondary mirror is chopped 25" north with respect to the target star for sky subtraction, and another set of voltmeter and lock-in amplifier measurements is begun. After this has completed, the target star is returned to the field of view and another set of measurements begins. An integration “triplet” is defined to be an on-source, 30 s AC integration and a 15 s DC integration both before and after the same measurement on a sky field. Sky levels in the optical are small compared to target star levels, so sky fields are observed with an asymmetric, 2:1 source to sky chop. See Figure 6 for a typical AC and DC measurement of the unpolarized HR 5854, and see Figure 7 for the strongly polarized HD 204827. The increase in AC level, and therefore in polarization, is striking between these stars.

Because two light beams with perpendicular polarization orientations experience the same retardance when passed through the PEM, the same polarization should be observed for the PEM at $\theta_{\text{PEM}} = \pm 45^\circ$ with respect to the optical axis of the instru-

ment. We rotate the PEM between these two positions to investigate the systematics of the PEM. The PEM is mounted to a gear driven by a stepper motor with an 8:1 step ratio, where the center of the PEM aperture is coincident with the rotation axis of the gear. Each motor step corresponds to a rotation of the PEM by $\Delta\theta_{\text{PEM}} = 0^\circ.1125$. For a Cassegrain ring angle of $\phi = 0^\circ$, the home position of the PEM projects its compression/extension axis northeast onto the sky (the $+U$ direction). This will be referred to as the “PEM+45 $^\circ$ ” position. The “PEM-45 $^\circ$ ” position causes this projection to be northwest on the sky (the $-U$ direction).

We rotate the Cassegrain ring and instrument through $\Delta\phi = 360^\circ$ to investigate rotation systematics, and PEM systematics are investigated by rotating the PEM to the $\pm 45^\circ$ positions (§§ 6.2 and 6.3). The precision of the Cassegrain ring angle is $\sigma_\phi = 0.1^\circ$. A standard observing sequence begins with the Cassegrain ring at $\phi = +180^\circ$ and an integration triplet at the PEM+45 $^\circ$ position followed by a triplet at the PEM-45 $^\circ$ position. The ring angle is then decremented by $\Delta\phi = 45^\circ$, at which point PEM-45 $^\circ$ and PEM+45 $^\circ$ triplets are taken. This process occurs for each target star for Cassegrain ring angles of $+180^\circ > \phi > -180^\circ$ in $\Delta\phi = 45^\circ$ increments to sample all $\pm Q/I$ and $\pm U/I$ Stokes components.

The next star will see the ring angles begin at $\phi = -180^\circ$ and end at $\phi = +180^\circ$. The endpoints of $\phi = \pm 180^\circ$ ensure that the ring will not “wind up” and be forced to derotate during an observing sequence, wasting observing time. After each triplet, either the PEM or Cassegrain ring is rotated but not both. Each standard star is generally given eight Cassegrain ring rotations ($\Delta\phi = 360^\circ$) at two PEM positions each ($\theta_{\text{PEM}} = \pm 45^\circ$), and

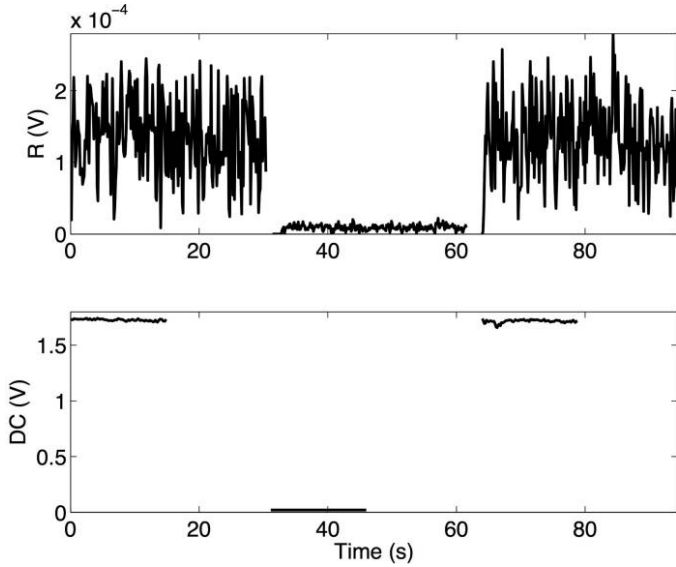


FIG. 6.—Typical raw AC and DC data for the unpolarized star HR 5854. Instantaneous values of R are calculated from the observables X and Y via eq. (3a).

two chop integrations are taken at each PEM position. Thus, most standard stars receive about 16 minutes of AC data and about 8 minutes of DC data per night.

5. DATA REDUCTION

Mean X , Y , and DC values for each detector are found for all on-source and sky measurements. The mean on-source values are then subtracted by the mean sky values. Assuming Stokes Q/I is observed, the polarization is calculated by the following (Appendix A):

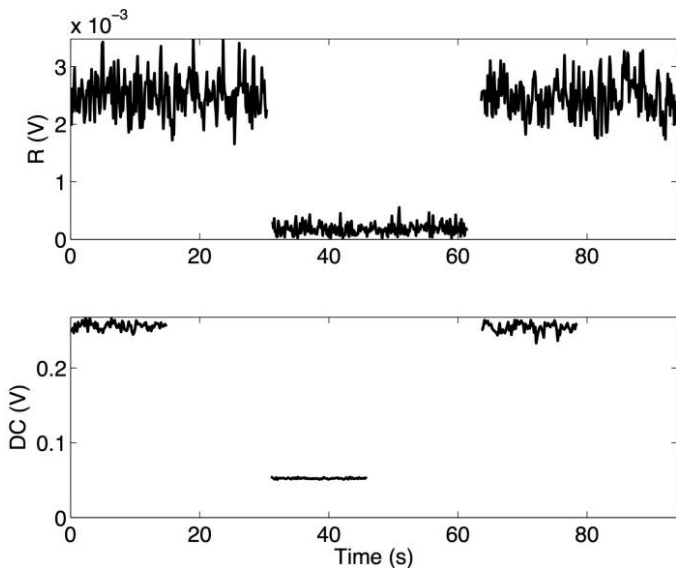


FIG. 7.—Typical raw data for the strongly polarized star HD 204827.

$$\frac{Q}{I} = \frac{\sqrt{2}}{E_{\text{PEM}}} \frac{\sqrt{(X_{\text{src}} - X_{\text{sky}})^2 + (Y_{\text{src}} - Y_{\text{sky}})^2}}{\text{DC}_{\text{src}} - \text{DC}_{\text{sky}}}. \quad (4)$$

The efficiency of the PEM, E_{PEM} , is the strength of the AC signal based on the choice of PEM peak retardance, and it is derived in Appendix A. For POLISH, this efficiency is $E_{\text{PEM}} \approx 86\%$. The sign of the final polarization of each on-source measurement is multiplied by the sign of the Stokes parameter measured. That is, the sign of the calculated Stokes parameter is calibrated by the phase from the lock-in amplifiers (eq. [3b]).

To calibrate absolute polarization measured with POLISH, we compare our measured polarization degree with the values of Heiles (2000) for all stars (§ 8). Gain factors of $G_{\text{APD}} \approx 1.56$ and $G_{\text{PMT}} \approx 1.26$ are therefore multiplied to APD and PMT derived polarizations, respectively. Because the bandpasses of the red and blue enhanced APDs are nearly identical, the polarization gain factors for the APDs are not significantly different. However, the large difference in bandpass between the APDs and PMTs causes the significant difference in the polarization gain factors between the APDs and PMTs. Position angle of net polarization is not calibrated for, because our observations are generally consistent with those in the literature for strongly polarized targets.

Nightly mean and run-averaged Q/I and U/I for each source are determined by taking the weighted mean polarization of all data over the requested timescale. The weighting for each measurement is its sky-subtracted DC level multiplied by integration time. This value is proportional to the total number of detected photons and ensures that all detected photons, rather than all measurements, are weighted equally. This is important for data taken in partly cloudy conditions. The polarimetric uncertainty is the square root of the weighted variance divided by the square root of the number of measurements. It is important to note that precision calculated in this manner is only applicable to stars with no intrinsic polarimetric variability. Analyses of the variability of the observed stars, including Cygnus X-1, will be made in a future paper.

Expected photon shot noise, detector noise, and observed noise are derived in Appendix B as equations (5a) through (5c):

$$\sigma_{P_{\text{shot}}} = \frac{\gamma_0 \sqrt{2}}{E_{\text{PEM}} \text{DC}} \times \left\{ \frac{1}{t_{\text{AC}}} \left[B_{\text{AC}} + \frac{1}{2} \min(B_{\text{max}}, B) (E_{\text{PEM}} P)^2 \right] \right\}^{1/2} \quad (5a)$$

$$\sigma_{P_{\text{detector}}} = \frac{\gamma \sqrt{2}}{E_{\text{PEM}} \text{DC}} \left\{ \frac{1}{t_{\text{AC}}} \left[B_{\text{AC}} + \frac{1}{2} \min(B_{\text{max}}, B) (E_{\text{PEM}} P)^2 \right] \right\}^{1/2} \quad (5b)$$

$$\sigma_{P_{\text{obs}}} = \frac{\sqrt{2}}{E_{\text{PEM}} \text{DC}} \left\{ \frac{1}{t_{\text{AC}}} \left[\frac{X^2 \sigma_X^2 + Y^2 \sigma_Y^2}{X^2 + Y^2} + \frac{1}{2} (E_{\text{PEM}} P \sigma_{\text{DC}})^2 \right] \right\}^{1/2} \quad (5c)$$

$$B_{\text{max}} = \left(\frac{\text{DC}}{eGT_A} \right)^{1/2} \quad (5d)$$

Here, $\gamma_0 \equiv 2 eGT_A \text{DC}$, $\gamma \equiv 2 eG^{1+x} T_A (\text{DC} + i'_d T_A)$, e is the electron charge, $B_{\text{AC}} \approx 2.6$ Hz is the bandwidth of the lock-in amplifiers, and t_{AC} is the integration time of the lock-in amplifiers (Figs. 6 and 7). The values i'_d , x , B , G , and T_A are the detector's output dark current, excess noise factor, bandwidth, gain, and transimpedance, which are listed in Table 2. A perfect detector will have noiseless gain, $x = 0$, and dark current $i'_d = 0$. Consultation of x for both detector types shows that gain from the PMTs is an order of magnitude less noisy than from the APDs, which is why PMTs are preferred over APDs for faint objects. Each of the uncertainties $\sigma_{X,Y,\text{DC}}$ represents the sample standard deviation of X , Y , or DC of the source added in quadrature to that of the sky. The values X , Y , and DC in equation (5c) are sky-subtracted.

6. STANDARD STARS AND SYSTEMATIC EFFECTS

6.1. Telescope Polarization

From Table 1, the polarizations of both HR 5854 (HD 140573) and HR 8974 (HD 222404) are close to zero, which makes them candidates for being truly unpolarized sources. Individual, shot-noise limited measurements of HR 5854 and HR 8974, before subtraction of telescope polarization, are plotted in Figure 8. Individual measurements for both stars lie within error of each other, and nightly mean Stokes parameters for both stars do not generally differ significantly. The equatorial mount of the Hale 5-m inhibits traditional telescope polarization measurement, which involves allowing the field to rotate and determining the center of the (Q, U) locus. However, since HLB06 performed this analysis and claim part-per-million polarization of HR 5854 and HR 8974, we therefore assume that these stars are indeed unpolarized. Lucas et al. (2008) report stability of HR 5854 after one year at the level of ΔQ , $U \approx 5 \pm 2$ parts per 10^6 , indicating only weak evidence for part-per-million variability.

TABLE 2
DETECTOR QUANTITIES

Detector	G	x	T_A (V/A)	B (kHz)	i'_d (nA)
Blue APD	300	0.138	4×10^6	90	3.5
Red APD	220	0.138	4×10^6	100	5.6
PMT	5×10^6	0.013	10^5	200	0.1

Nightly and run-averaged telescope polarization are calculated by the weighted mean polarization from HR 5854 and HR 8974, and they are listed in Table 3 as ‘‘TP.’’ Uncertainties in these estimates are given as the square root of the weighted variance of the individual measurements divided by the square root of the number of measurements. The light beam from the secondary mirror impinges directly on the PEM, so we assume that instrumental polarization is negligible. Indeed, the similar instrument PlanetPol has an intrinsic polarization of only a few parts per million (HLB06).

The cause of the large telescope polarization of the Hale 5-m, $\text{TP} \approx 2.5 \times 10^{-4}$, may be due to inhomogeneities in the coating of the primary and/or secondary mirrors. Net stellar polarizations are shown in Tables 4 and 5 after nightly telescope polarization is subtracted. Weakly polarized stars ($P < 0.1\%$) are given in Table 4, while strongly polarized stars ($P > 0.1\%$) are listed in Table 5. Because HR 5854 and HR 8974 are effectively unpolarized, uncertainty in polarimetric position angle Θ is so large as to preclude meaningful estimates on Θ .

Even though the bandpasses differ between the APDs and PMTs, we do not determine telescope polarization with the PMTs for many reasons. First, it is difficult to identify unpolarized stars with $V > 7$. Second, differences in telescope polarization derived from APD and PMT observations will only be detected after long PMT observations. Third, we aim to detect small-scale changes in polarization of target stars, so constant offsets in telescope polarization between APD and PMT observations is not our goal. Therefore, we choose to quickly measure telescope polarization to the part-per-million level using bright stars and APDs to minimize overhead due to calibration.

6.2. PEM Systematics

The PEM is rotated to positions of $\theta_{\text{PEM}} = \pm 45^\circ$ with respect to the Wollaston axis, and the Cassegrain ring is rotated through $\Delta\phi = 360^\circ$. This gives independent measurements of the PEM and ring rotation systematics. While PlanetPol can be rotated to positions of $\pm 45^\circ$ with respect to their PEM, this 90° rotation of the instrument also causes the Stokes parameter of opposite sign to be observed. Thus, PEM and instrument-rotation systematics are coupled for PlanetPol, while they can be independently measured for POLISH. In addition, PlanetPol can only rotate through $\Delta\phi = 135^\circ$, but the $\Delta\phi = 360^\circ$ rotation of POLISH enables more thorough measurement of the instrument rotation systematics.

To investigate the PEM systematics, we subtract the offset due to ring rotation systematics. We first find the weighted mean polarization of each Stokes parameter for each star separately and at each of the $\theta_{\text{PEM}} = \pm 45^\circ$ positions. In increments of $\Delta\phi = 90^\circ$, we average ring angles $\phi = 0^\circ$ to $\phi = 270^\circ$ for the Q/I parameter and $\phi = 45^\circ$ to $\phi = 315^\circ$ for the U/I parameter. Therefore, the mean polarization at each PEM position contains the same offset due to ring rotation systematics. The sign of the polarization taken at the $\theta_{\text{PEM}} = -45^\circ$ position is

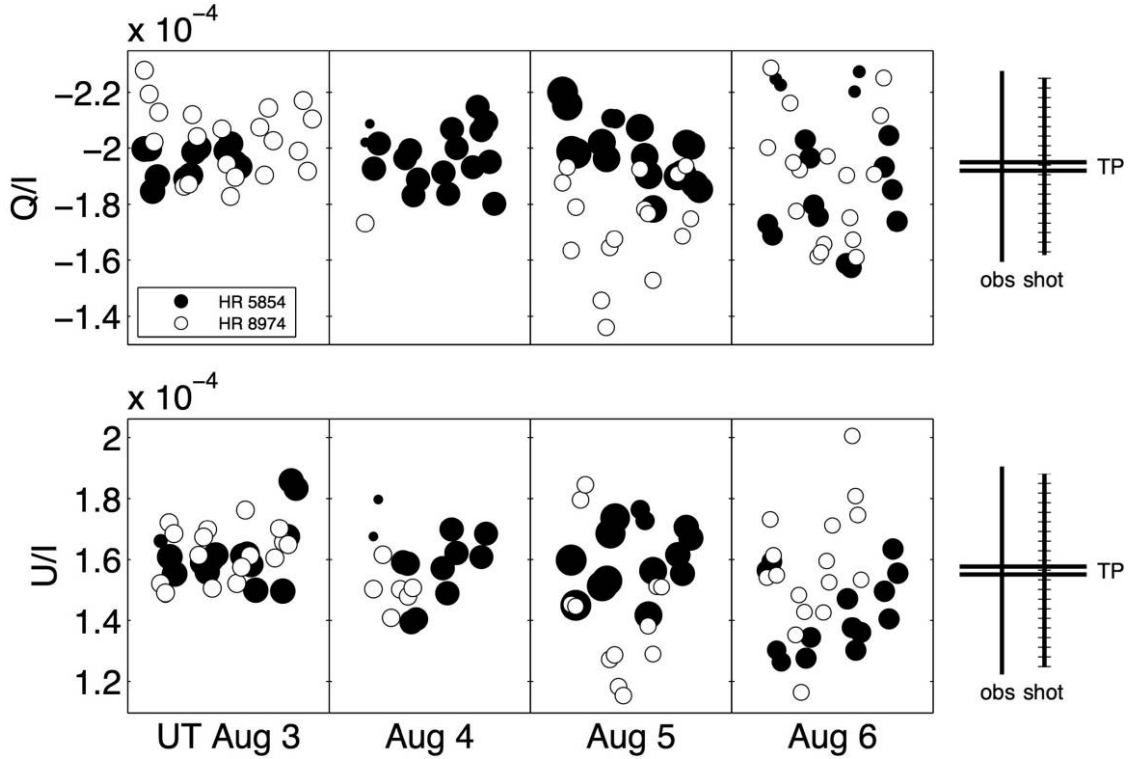


FIG. 8.—Raw, individual measurements of HR 5854 and HR 8974 to determine telescope polarization. The area of the data points is proportional to the number of detected photons. The vertical lines marked “obs” indicate the median, 1σ uncertainty in polarization of the data points calculated from eq. (5c). The vertical lines marked “shot” denote the expected, median photon shot noise from equation (5a). The horizontal lines outside the plot boxes indicate the $\pm 1\sigma$ uncertainty in run-averaged telescope polarization for each Stokes parameter.

reversed, and the unweighted mean is taken across both Stokes parameters and both PEM positions. The unweighted mean is employed so neither Stokes parameter nor PEM position dominates. This value is the PEM offset, given by S_{PEM} (eq. [6a]). The uncertainty in this offset is half the difference between the results for Stokes Q/I and U/I (eq. [6b]). Here, the index i represents the PEM position, where $i = 0$ indicates $\theta_{\text{PEM}} = +45^\circ$ and $i = 1$ indicates $\theta_{\text{PEM}} = -45^\circ$. This process is duplicated for each detector and star separately.

$$S_{\text{PEM},\phi} = \frac{1}{4} \sum_{i=0}^1 (-1)^i \bar{Q}_i + (-1)^i \bar{U}_i, \quad (6a)$$

$$\sigma_{\text{PEM},\phi} = \frac{1}{4} \left| \sum_{i=0}^1 (-1)^i \bar{Q}_i - (-1)^i \bar{U}_i \right|. \quad (6b)$$

6.3. Positive/Negative Stokes Systematics

To investigate the systematics when rotating the Cassegrain ring by 90° (i.e., the differences between $\pm Q$ as well as between $\pm U$), we subtract the offset due to PEM systematics. While this value has been calculated above, we prefer to combine the data in such a way as to cause it to cancel. We find the weighted

mean value of each Stokes parameter separately using both $\theta_{\text{PEM}} = \pm 45^\circ$ positions. We average ring angles $\phi = 0^\circ$ and $\phi = 180^\circ$ for the $+Q/I$ parameter, $\phi = 90^\circ$ and $\phi = 270^\circ$ for $-Q/I$, $\phi = 45^\circ$ and $\phi = 225^\circ$ for $+U/I$, and $\phi = 135^\circ$ and $\phi = 315^\circ$ for $-U/I$. We then reverse the signs of polarization for the negative Stokes parameters. Taking the unweighted mean for Q/I and U/I separately, we find the offsets for both Stokes parameters, S_ϕ (eq. [6a]). The uncertainty is half the difference between the offsets for the positive and negative Stokes parameters (eq. [6b]). Here, the index i represents the sign of the measured Stokes parameter, where $i = 0$ indicates $+Q$, $+U$, and $i = 1$ indicates $-Q$, $-U$.

Both systematics are calculated for each detector combination. A weighted mean is taken across all stars to determine the mean systematics of the instrument/telescope system. Weighting is given as the inverse square of the individual uncertainties, as opposed to weighting by detected photons. This is because mean values are taken across all stars as opposed to across all measurements of a particular star. The mean systematic across all stars when rotating the PEM by $\pm 90^\circ$ is $S_{\text{PEM}} = (+1.6 \pm 4.7) \times 10^{-6}$, while the mean systematic between positive and negative Stokes parameters is $S_\phi = (-3.0 \pm 2.8) \times 10^{-6}$. The quadrature addition of S_{PEM} and S_ϕ divided by stellar polarization has a mean value of

TABLE 3
TELESCOPE POLARIZATION FROM UNPOLARIZED STANDARD STARS

UT Date	Target	Q/I ($\times 10^{-6}$)	U/I ($\times 10^{-6}$)	P ($\times 10^{-6}$)	Θ ($^\circ$)
2007 Aug 3	HR 5854	-195.1(1.5)	+161.9(2.5)	253.5(2.0)	70.16(25)
2007 Aug 4		-196.6(2.3)	+156.9(2.9)	251.6(2.5)	70.70(31)
2007 Aug 5		-198.8(2.5)	+159.4(2.8)	254.8(2.6)	70.65(30)
2007 Aug 6		-185.2(4.9)	+142.8(3.2)	233.9(4.3)	71.17(48)
Overall		-195.3(1.5)	+156.5(1.7)	250.2(1.6)	70.64(19)
2007 Aug 3	HR 8974	-202.9(2.7)	+163.7(1.9)	260.8(2.4)	70.55(25)
2007 Aug 4		-173(31)	+149.7(2.9)	229(24)	69.6(2.6)
2007 Aug 5		-170.0(5.8)	+140.2(5.0)	220.3(5.5)	70.24(69)
2007 Aug 6		-189.1(4.7)	+170.2(4.5)	254.4(4.6)	69.00(52)
Overall		-189.3(3.1)	+156.2(2.4)	245.5(2.9)	70.24(32)
2007 Aug 3	TP	-198.8(1.8)	+162.6(1.7)	256.8(1.8)	70.37(19)
2007 Aug 4		-195.8(2.4)	+155.7(2.4)	250.1(2.4)	70.75(27)
2007 Aug 5		-191.6(3.4)	+154.6(2.9)	246.2(3.2)	70.55(36)
2007 Aug 6		-186.6(3.5)	+149.0(3.2)	238.9(3.4)	71.70(40)
Overall		-193.5(1.5)	+156.4(1.3)	248.9(1.4)	70.53(16)

NOTES.—These polarization values are the mean, weighted by DC level, of measurements taken by both the red and blue enhanced APDs. Therefore, they are measured in the wavelength range of about 400 nm to roughly 850 nm. Uncertainty in position angle is purely statistical, as position angle is not calibrated absolutely.

$S/P = 0.61 \pm 0.21\%$. Therefore, systematic effects are consistent with zero and are only important at less than 1% of the measured polarization.

7. RUN-AVERAGED PRECISION

The flux of net polarized light from a star is proportional to the polarization, P . Because the photon shot noise on this quantity scales as $P^{1/2}$, one would expect that the run-averaged, polarimetric precision attainable on stars of similar brightness would also be proportional to $P^{1/2}$. In addition, we expect the instrument to have a noise floor that becomes noticeable for unpolarized stars. As can be seen in Figure 9, we find good agreement by fitting the data from the stars observed with APDs to the model

$$\hat{\sigma}_P = \left[\left(\frac{P^{1/2}}{a} \right)^2 + \sigma_0^2 \right]^{1/2}. \quad (7)$$

Here, a is a scaling factor and $\sigma_0 = 2.4$ parts per 10^6 is the noise floor of the instrument. The fitting was performed using a least-squares approach. However, since the data span 5 orders of magnitude in polarization, the residuals to be minimized are given by

$$\text{SSE} = \sum_i \left(\frac{\sigma_i - \hat{\sigma}}{\sigma_i} \right)^2. \quad (8)$$

The stars observed with APDs are all roughly the same visual magnitude. However, the precision achieved on the weakly polarized HD 212311, observed with PMTs, is about an order of magnitude worse than for the stars observed with APDs. This is

expected, since HD 212311 is roughly 5 magnitudes fainter than the APD stars (Table 1). Thus, the scaling factor a determined for the APD stars will be an order of magnitude different from the scaling factor for the PMT stars. This is why the PMT stars were excluded from the above fit. However, precision on the strongly polarized HD 204827 is surprisingly consistent with the slope for the bright stars. The four stars with polarization $P > 3\%$, HD 7927, HD 147084, HD 154445, and HD 204827, are known to be variable (Dolan & Tapia 1986; Bastien et al. 1988, 2007). Thus, differences in σ_P and the model fit are likely to be related to stellar variability. As stated in § 5, it should be noted that run-averaged precision assumes nonvariable polarization of the target. The validity of this assumption will be investigated in a future paper.

8. COMPARISON TO LITERATURE

We compare our results to the agglomerated polarization catalog of Heiles (2000) and to HLB06 in Figure 10. The degree of polarization measured by POLISH is plotted as open stars, and stellar polarization increases toward the bottom of the plot. Precision in the degree of polarization from this work is plotted as filled black circles, precision values computed from HLB06 are light gray diamonds, and Heiles (2000) precision values are dark gray squares. Uncertainty in degree of polarization is listed nightly for strongly polarized stars in Table 3 of HLB06 (HD 7927, HD 147084, HD 154445, and HD 187929). To determine run-averaged uncertainty for these stars, we first convert their degree, position angle, and uncertainties to Q/I , U/I , and associated uncertainties. We then perform a weighted mean for each Stokes parameter separately, where the weights

TABLE 4
WEAKLY POLARIZED STANDARD STARS

UT Date	Star	Q/I ($\times 10^{-6}$)	U/I ($\times 10^{-6}$)	P ($\times 10^{-6}$)	Θ ($^\circ$)
2007 Aug 3	HR 5854	+3.7(2.4)	-0.8(3.0)	3.8(2.4)	...
2007 Aug 4		-0.7(3.3)	+1.9(3.8)	2.0(3.8)	...
2007 Aug 5		-7.7(4.2)	+4.2(4.0)	8.8(4.1)	...
2007 Aug 6		+1.7(6.0)	-6.8(4.5)	7.1(4.6)	...
Overall		-2.0(2.2)	+0.3(2.2)	2.0(2.2)	...
2007 Aug 3	HR 8974	-3.2(3.3)	+1.3(2.5)	3.5(3.1)	...
2007 Aug 4		+22.6(2.4)	-6.1(3.8)	23.3(2.5)	...
2007 Aug 5		+21.6(6.7)	-14.4(5.7)	25.9(6.4)	...
2007 Aug 6		-2.5(5.9)	+21.6(5.5)	21.7(5.5)	...
Overall		+4.7(3.5)	-0.1(2.8)	4.7(3.5)	...
2007 Aug 4	HD 9270	-33.9(5.1)	-76.0(4.0)	83.1(4.3)	123.0(1.7)
2007 Aug 5		-37.6(7.1)	-82.2(4.2)	90.4(4.8)	122.7(2.1)
2007 Aug 6		-43.0(8.4)	-81.6(6.9)	92.1(7.3)	121.2(2.6)
Overall		-35.0(3.5)	-81.8(2.7)	88.9(2.8)	123.4(1.1)
2007 Aug 4	γ Oph	-86.5(5.6)	+134.9(4.3)	160.3(4.7)	61.33(94)
2007 Aug 5		-81.9(4.0)	+136.9(4.9)	159.5(4.7)	60.45(76)
2007 Aug 6		-65.8(7.7)	+118.5(7.1)	135.5(7.2)	59.5(1.6)
Overall		-77.6(3.5)	+128.4(3.4)	150.1(3.4)	60.56(65)
2007 Aug 3	HD 212311	+330(63)	-4(60)	330(63)	179.6(5.2)
2007 Aug 4		+260(48)	+15(60)	261(48)	1.6(6.6)
2007 Aug 5		+300(52)	-61(68)	306(52)	174.5(6.4)
2007 Aug 6		+178(58)	-136(68)	226(65)	161.1(8.9)
Overall		+273(29)	-33(34)	275(29)	176.5(3.6)
2007 Aug 5	Algenib	-526(10)	-528(11)	745(11)	112.54(41)
2007 Aug 6		-579.2(7.3)	-512.7(7.2)	773.5(7.2)	110.76(27)
Overall		-557.1(6.8)	-521.8(5.8)	763.3(6.4)	111.56(24)

NOTES.—The polarization values for all stars except HD 212311 are the mean, weighted by DC level, of measurements taken by both the red and blue enhanced APDs. Therefore, they are measured in the wavelength range of about 400 nm to roughly 850 nm. The polarization values for HD 212311 were taken by the PMTs. Therefore, they are measured in the wavelength range of about 400 to 675 nm. Telescope polarization has been subtracted from all values (§ 6.1). Uncertainty in position angle is purely statistical, as position angle is not calibrated absolutely.

are the inverse square of the nightly uncertainties in those parameters. To determine polarization for each star, Heiles (2000) takes the weighted mean polarization from different authors. The weights are the inverse square of the uncertainties from each author. Uncertainty in stellar polarization in Heiles (2000) is the square root of the sum of squares of residuals between each author's polarization and the Heiles (2000) mean polarization.

The rightmost column of the figure shows the position angle of net polarization, where north is at the top and east is at the left of the plots. Orientations of the black lines indicate position angles measured with POLISH, HLB06 position angles are light gray lines, and Heiles (2000) position angles are dark gray lines. Agreement between the data sets for stars with low polarization is of course poor, because the position angle of net polarization is meaningless for these stars. As stellar polarization increases, however, agreement in position angle also increases. Because agreement between our measurements and the literature regarding degree of polarization is determined by choice of polari-

metric gain factor (§ 5), accuracy in our observations is assessed by agreement in position angle of polarization.

The unpolarized standard stars observed in order to determine telescope polarization, HR 5854 and HR 8974, have run-averaged polarimetric precision of order 1 part per 10^6 . This is our precision goal for bright, unpolarized stars, and it is comparable to the precision achieved by PlanetPol. However, we have improved the precision on these stars by nearly 3 orders of magnitude with respect to the Heiles (2000) catalog. It should be noted that HR 8974 is known to harbor an extrasolar planet with a minimum mass of 1.60 ± 0.13 Jupiter masses, a period of 902.9 ± 3.5 days, and a semimajor axis of 2.044 ± 0.057 AU (Neuhäuser et al. 2007). However, we expect the amplitude of the planetary polarimetric signal to be of order 10^{-8} or less and consequently undetectable.

We have improved the polarimetric precision achieved on HD 9270 by an order of magnitude with respect to Heiles (2000). Precision on γ Oph and Algenib (HD 886), however, is only slightly better than tabulated in Heiles (2000). It is ex-

TABLE 5
 STRONGLY POLARIZED STANDARD STARS

UT Date	Star	Q/I (%)	U/I (%)	P (%)	Θ ($^\circ$)
2007 Aug 4	u Her	+0.1309(13)	-0.03803(81)	0.1363(13)	171.90(18)
2007 Aug 5	HD 157999	-0.8763(12)	+0.1531(20)	0.8895(12)	85.045(65)
2007 Aug 6		-0.86422(93)	+0.1492(24)	0.8770(10)	85.103(75)
Overall		-0.8699(13)	+0.1509(16)	0.8828(13)	85.079(51)
2007 Aug 3	HD 187929	-1.5949(10)	-0.1610(56)	1.6030(12)	92.883(99)
2007 Aug 5		-1.5551(27)	-0.1758(41)	1.5651(28)	93.224(75)
2007 Aug 6		U1.5262(27)	-0.1727(40)	1.5360(28)	93.229(76)
Overall		-1.5784(37)	-0.1659(35)	1.5872(37)	93.001(65)
2007 Aug 4	HD 7927	-3.0658(40)	-0.2510(93)	3.0761(40)	92.342(87)
2007 Aug 3	HD 147084	...	+3.3972(47)
2007 Aug 4		+1.658(14)	+3.4386(25)	3.8171(65)	32.134(95)
Overall		...	+3.4050(56)
2007 Aug 4	HD 154445	-3.8076(67)	-0.0405(12)	3.8078(67)	90.3047(86)
2007 Aug 3	HD 204827	-2.6413(82)	+4.733(89)	5.4202(89)	59.582(46)
2007 Aug 4		...	+4.819(12)
2007 Aug 5		-2.638(11)	+4.742(10)	5.427(10)	59.542(56)
2007 Aug 6		-2.6638(89)	+4.7970(95)	5.4869(95)	59.521(47)
Overall		-2.6463(56)	+4.7575(68)	5.4440(66)	59.542(31)

NOTES.—The polarization values for all stars except HD 204827 are measured in the wavelength range of about 400 nm to roughly 850 nm. The polarization values for HD 204827 are measured in the wavelength range of about 400 to 675 nm. Telescope polarization has been subtracted from all values (§ 6.1). Uncertainty in position angle is purely statistical, as position angle is not calibrated absolutely.

pected that more observations of these stars will improve this precision. There is 1 order of magnitude improvement in precision on HD 212311 with respect to Heiles (2000). The precision achieved on u Her has been improved by 2 orders of magnitude from Heiles (2000).

Precision on HD 157999 has been improved by 1 order of magnitude, while precision on HD 187929 is comparable between our measurements, those from PlanetPol, and those from Heiles (2000). This may indicate intrinsic variability of the source. Precision on HD 7927 from POLISH is of the same magnitude as that from PlanetPol, and we improve the precision

with respect to Heiles (2000) by 1 order of magnitude. We assume that the discrepancy between the HLB06 position angle ($42.18 \pm 0.01^\circ$) and our measurements for HD 7927 is simply a typographical error in their paper. We expect that their intended value is 92.18° , which is close to our value.

Precision on HD 147084 is comparable between our measurements and those from PlanetPol. We improve on the Heiles (2000) results by almost an order of magnitude. Precision on HD 154445 between our measurements, PlanetPol, and Heiles (2000) lie within a factor of ≈ 3 of each other, which may suggest intrinsic variability of the source. We only have one night of data on this star, so this possibility will not be investigated in our forthcoming paper. Finally, we improve the precision on HD 204827 by over an order of magnitude with respect to Heiles (2000).

9. DISCUSSION

We have commissioned a high-precision, integrated light polarimeter in order to detect variability in the optical, linear polarization of high-mass X-ray binaries. This variability should be indicative of system inclination, and high-precision monitoring is hoped to constrain the mass of the black holes in these systems. While results from observations of Cygnus X-1 will be forthcoming, we observe polarization of standard stars to high precision. Individual measurements of most stars are photon shot-noise limited (Fig. 8). Nightly mean and run-averaged polarizations of most stars are observed at precision levels

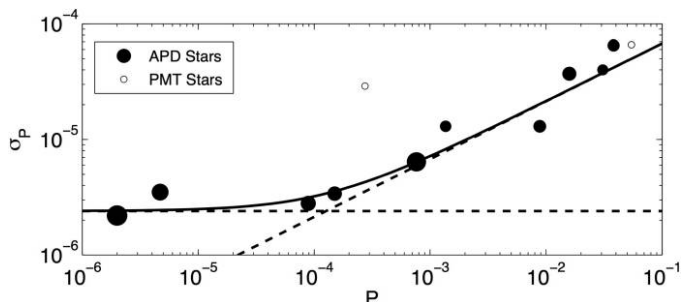


FIG. 9.—Run-averaged precision as a function of stellar polarization. Photon shot-noise considerations predict precision proportional to the square root of polarization, which is observed. The solid line is a fit to the data with power-law slope 1/2 plus the quadrature addition of an instrumental noise floor. The dashed lines are the $P^{1/2}$ and noise-floor terms. The diameters of the data points are inversely proportional to stellar magnitude.

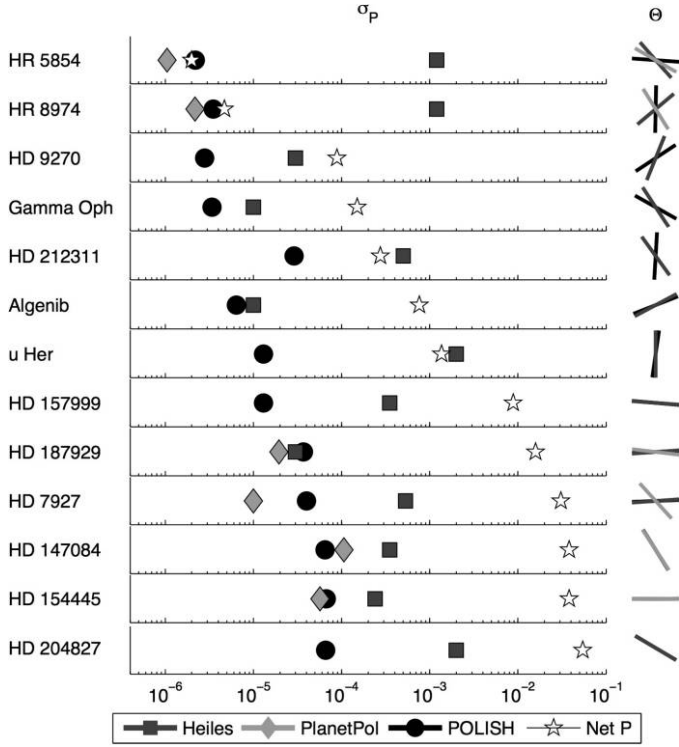


FIG. 10.—Precision achieved on standard stars compared with HLB06 and Heiles (2000). It must be stressed that POLISH observations are unfiltered, HLB06 observations were taken in the wavelength range of 625 to 950 nm, and Heiles (2000) data are for V band. Stars are listed from top to bottom in order of increasing net polarization according to our measurements. Note that HD 212311 and HD 204827 were observed with PMTs (about 400 to 675 nm bandpass), while the rest of the sample was observed with APDs (about 400 to 850 nm bandpass).

comparable to PlanetPol, a similar instrument mounted on the William Herschel Telescope.

Precision achieved on unpolarized stars is of order 1 part per 10^6 , which is up to 3 orders of magnitude more precise than the combined polarimetric catalog of Heiles (2000). We find night-to-night precision of 3 to 10 parts per 10^6 on bright, weakly polarized standard stars ($10^{-4} < P < 10^{-3}$). This precision increases as $\sigma_P \propto P^{1/2}$ and is of order 1 part in 10^5 for stars with

$1\% < P < 10\%$. Precision on strongly polarized stars is improved by up to 1 order of magnitude with respect to Heiles (2000). Thus, precision achieved in a night-to-night sense scales as expected from photon shot-noise statistics. Systematic effects reveal themselves at the level of less than 1% of the measured polarization for polarized stars. The night-to-night noise floor of the instrument appears to be 1% of the telescope polarization, or about 2 parts per 10^6 . This noise floor is comparable to that of PlanetPol, which is about 1 part per 10^6 (Lucas et al. 2008). The large improvement in polarimetric precision arises from the combination of large telescope aperture, a high-quality polarization modulator, and high frequency modulation.

In addition to observations of high-mass X-ray binaries, the high precision of POLISH is well suited to polarimetric observations of extrasolar planet host stars, debris disks, and evolved stars. While detection of scattered light from hot Jupiters requires higher precision than currently attainable, knowledge of host-star baseline variability is necessary. In addition, observation of planetary transits in polarized light gives information on transit geometry and the scattering properties of the host star, which are poorly known. Polarimetric observations of debris disks may constrain the size distribution of dust grains as well as the scattering properties of the disk. Evolved stars represent the intermediate stage between roughly spherical stars and strikingly asymmetric planetary nebulae. The growth of asymmetry in these systems is poorly understood, and high-precision polarimetry may make significant contributions to this field. Indeed, inexpensive, high-precision polarimeters are poised to impart their mark in many fields of astronomy.

S. J. W. would like to thank Shrinivas Kulkarni, Michael Ireland, and Ian McEwan for valuable discussions on instrumentation, polarimetry, and signal processing. In addition, the help of the Palomar Observatory staff, especially Bruce Baker, Karl Dunscombe, John Henning, Greg van Idsinga, and Steve Kunsman, has been essential. We would like to thank the anonymous referee for helpful comments on this manuscript. We would like to acknowledge support from the Moore Foundation. This research has made use of the SIMBAD database, operated at CDS, Strasbourg, France.

APPENDIX A

MUELLER MATRIX FOR POLISH

The Mueller matrix of POLISH is given by

$$M_{\text{POLISH}} = T_{-\phi} \times M_D \times M_L \times M_W \times M_B \times T_{-\theta} \times M_{\text{PEM}} \times T_{\theta} \times T_{\phi} \times M_T, \quad (\text{A1})$$

and observed polarization is related to incident polarization according to

$$\begin{pmatrix} I_{\text{obs}} \\ Q_{\text{obs}} \\ U_{\text{obs}} \\ V_{\text{obs}} \end{pmatrix} = M_{\text{POLISH}} \begin{pmatrix} I \\ Q \\ U \\ V \end{pmatrix}. \quad (\text{A2})$$

Starting from the left side of equation (A1), the matrices are the rotation matrix for Cassegrain ring angle ϕ , the Mueller matrices for the detector window, field lenses, Wollaston prism, and

beam splitter, the rotation matrix for PEM angle $\theta \equiv \theta_{\text{PEM}}$, the Mueller matrix for the PEM, and the Mueller matrix for the telescope. Subtraction of telescope polarization is necessary to calibrate for M_T .

Because the PEM and Wollaston prism convert the polarization of the incident light into intensity modulation, the polarization state of light past the Wollaston is not our concern. The 90° reflection of light off the beam splitter is stable during observations, so any polarization imparted to the light by the beam splitter is just a constant offset to the polarization. Therefore, we only consider the throughput of the detector window, field lenses, and beam splitter, as opposed to their polarizing properties. We denote the throughput of the instrument as E , and it is given in § 3. The POLISH Mueller matrix becomes

$$M_{\text{POLISH}} = E \begin{pmatrix} 1 & 0 & 0 & 0 \\ 0 & \cos 2\phi & -\sin 2\phi & 0 \\ 0 & \sin 2\phi & \cos 2\phi & 0 \\ 0 & 0 & 0 & 1 \end{pmatrix} \times \begin{pmatrix} 0.5 & \pm 0.5 & 0 & 0 \\ \pm 0.5 & 0.5 & 0 & 0 \\ 0 & 0 & 0 & 0 \\ 0 & 0 & 0 & 0 \end{pmatrix} \times \begin{pmatrix} 1 & 0 & 0 & 0 \\ 0 & \cos 2\theta & -\sin 2\theta & 0 \\ 0 & \sin 2\theta & \cos 2\theta & 0 \\ 0 & 0 & 0 & 1 \end{pmatrix} \\ \times \begin{pmatrix} 1 & 0 & 0 & 0 \\ 0 & 1 & 0 & 0 \\ 0 & 0 & \cos \beta & \sin \beta \\ 0 & 0 & -\sin \beta & \cos \beta \end{pmatrix} \times \begin{pmatrix} 1 & 0 & 0 & 0 \\ 0 & \cos 2\theta & \sin 2\theta & 0 \\ 0 & -\sin 2\theta & \cos 2\theta & 0 \\ 0 & 0 & 0 & 1 \end{pmatrix} \times \begin{pmatrix} 1 & 0 & 0 & 0 \\ 0 & \cos 2\phi & \sin 2\phi & 0 \\ 0 & -\sin 2\phi & \cos 2\phi & 0 \\ 0 & 0 & 0 & 1 \end{pmatrix}. \quad (\text{A3})$$

The top sign in the Wollaston matrix (+) indicates the left beam, which reaches detector 2, and the bottom sign (−) represents the right beam, which reaches detector 1.

The instantaneous retardance of the PEM is given by $\beta = \beta_0 \sin \omega t$, and expanding the retardance in terms of Bessel functions gives

$$\sin(\beta_0 \sin \omega t) = 2 \sum_{n=0}^{\infty} J_{2n+1}(\beta_0) \sin[(2n+1)\omega t], \quad (\text{A4a})$$

$$\cos(\beta_0 \sin \omega t) = J_0(\beta_0) + 2 \sum_{n=1}^{\infty} J_{2n}(\beta_0) \cos 2n\omega t. \quad (\text{A4b})$$

The $\sin \beta$ expansion in equation (A4a) generates odd harmonics of the PEM reference frequency, while the $\cos \beta$ expansion in Equation A4b generates even harmonics. When propagating incident light through POLISH as per Equation A2, one can see that the linear Stokes parameters Q/I and U/I will be modulated at even harmonics of the PEM modulation, while the circular Stokes parameter V/I will be modulated at odd harmonics. Thus, we choose to set our lock-in amplifiers to record the second harmonic of modulated intensity, which is

$$\frac{2}{E} I_{\text{obs}} = I \pm [\cos^2 2\theta \cos 2\phi \mp \frac{1}{2} \sin 4\theta \sin 2\phi \\ + (\sin^2 2\theta \cos 2\phi + \frac{1}{2} \sin 4\theta \sin 2\phi) J_0(\beta_0)] Q \\ \pm [\sin^2 2\theta \cos 2\phi + \frac{1}{2} \sin 4\theta \sin 2\phi] [2J_2(\beta_0) \cos 2\omega t] Q \\ \pm [\cos^2 2\theta \sin 2\phi + \frac{1}{2} \sin 4\theta \cos 2\phi \\ + (\sin^2 2\theta \sin 2\phi \mp \frac{1}{2} \sin 4\theta \cos 2\phi) J_0(\beta_0)] U \\ \pm [\sin^2 2\theta \sin 2\phi \mp \frac{1}{2} \sin 4\theta \cos 2\phi] \\ \times [2J_2(\beta_0) \cos 2\omega t] U. \quad (\text{A5})$$

The lock-in amplifiers record the RMS value of the AC component of the intensity, given by R . The amplitude of the AC signal is therefore

$$R\sqrt{2} = \frac{E}{2} \{ \pm 2J_2(\beta_0) [(\sin^2 2\theta \cos 2\phi + \frac{1}{2} \sin 4\theta \sin 2\phi) Q \\ + (\sin^2 2\theta \sin 2\phi \mp \frac{1}{2} \sin 4\theta \cos 2\phi) U] \}. \quad (\text{A6})$$

The mean intensity, or DC level, is given by

$$\frac{2}{E} \text{DC} = I \pm [\cos^2 2\theta \cos 2\phi \mp \frac{1}{2} \sin 4\theta \sin 2\phi \\ + J_0(\beta_0) (\sin^2 2\theta \cos 2\phi + \frac{1}{2} \sin 4\theta \sin 2\phi)] Q \\ \pm [\cos^2 2\theta \sin 2\phi + \frac{1}{2} \sin 4\theta \cos 2\phi \\ + J_0(\beta_0) (\sin^2 2\theta \sin 2\phi \mp \frac{1}{2} \sin 4\theta \cos 2\phi)] U. \quad (\text{A7})$$

For $\theta = \pm 45^\circ$, equations (A6) and (A7) reduce to

$$R\sqrt{2} = \pm \frac{E}{2} [2J_2(\beta_0) (Q \cos 2\phi + U \sin 2\phi)], \quad (\text{A8a})$$

$$\text{DC} = \frac{E}{2} [I \pm Q J_0(\beta_0) \cos 2\phi \pm U J_0(\beta_0) \sin 2\phi]. \quad (\text{A8b})$$

Two integrations with the Cassegrain ring rotated $\Delta\phi = 45^\circ$ apart are therefore required to determine both linear Stokes parameters Q/I and U/I .

For Cassegrain ring angle $\phi = 0^\circ$, the normalized polarization in terms of the observables R and DC is given by

$$\frac{Q}{I} = \frac{R\sqrt{2}}{2J_2(\beta_0)\text{DC} - J_0(\beta_0)R\sqrt{2}}. \quad (\text{A9})$$

It can be seen that choice of $\beta_0 = 2.4048$ radians, the first zero of $J_0(z)$, ensures that polarization is proportional to the ratio of R and DC. In this case, equation (A9) reduces to equation (4), and the PEM efficiency is $E_{\text{PEM}} \equiv 2J_2(\beta_0) = 86.4\%$. How-

ever, choosing half-wave retardance, $\beta_0 = \pi$ radians, increases PEM efficiency to $E_{\text{PEM}} = 97.1\%$ at the expense of additional calibration. That is, the DC level is a function of source polarization for half-wave retardance, but it is independent for retardance of $\beta_0 = 2.4048$ radians. Because we plan to observe unpolarized well as strongly polarized sources, we choose a peak retardance of $\beta_0 = 2.4048$ radians in our observations.

APPENDIX B

NOISE

Given pre-gain signal current i_0 and pre-gain dark current i_d , the number of pre-gain photoelectrons during an integration of duration t_{AC} and the shot noise on this quantity will be given by

$$n = \frac{(i_0 + i_d)t_{\text{AC}}}{e}, \quad (\text{B1a})$$

$$\sigma_n = \left[\frac{(i_0 + i_d)t_{\text{AC}}}{e} \right]^{1/2}. \quad (\text{B1b})$$

The post-gain shot-noise current is

$$\sigma'_i = G \left[\frac{2eBF(i_0 + i_d)}{t_{\text{AC}}} \right]^{1/2}, \quad (\text{B2})$$

where B is detector bandwidth, G is detector gain, and $F \approx G^x$ is the gain noise factor (post-gain quantities are primed). This factor arises because the gain process itself has statistical fluctuations. The excess noise factor, x , is a constant.

Because voltage is measured at the output of the detectors, we convert signal and dark current to signal and dark voltage. The pre-gain signal and dark current are $i_0 = \text{DC}/GT_A$ and $i_d = i'_d/G$, where T_A is the amplifier transimpedance in V/A and the post-gain dark current is i'_d . Output noise voltage is related to noise current by $\sigma'_v = T_A\sigma'_i$, so that

$$\sigma'_v = \left[\frac{2eBG^{1+x}T_A(\text{DC} + i'_dT_A)}{t_{\text{AC}}} \right]^{1/2}. \quad (\text{B3})$$

This is the expected voltage noise at the output of imperfect detectors, where $x \neq 0$. The bandwidth B must be chosen with care. Photon shot noise is white noise, but it cannot have infinite bandwidth because integrated power would also be infinite. The maximum frequency at which photon shot noise can occur is the count rate of noise photons. Thus, we determine maximum bandwidth by the square root of the number of detected photons,

$$B_{\text{max}} = \left(\frac{\text{DC}}{eGT_A} \right)^{1/2}. \quad (\text{B4})$$

The detectors have bandwidths between about 100 and 200 kHz. However, the lock-in amplifiers only admit noise in a bandwidth

of $B_{\text{AC}} \approx 2.6$ Hz, while the voltmeters have bandwidth of $B_{\text{DC}} \approx 1$ MHz. Thus, the bandwidth of shot noise on X and Y will be $\min(B_{\text{max}}, B_{\text{detector}}, B_{\text{AC}}) = B_{\text{AC}}$ for all stars. The bandwidth of shot noise on DC will be $\min(B_{\text{max}}, B_{\text{detector}}, B_{\text{DC}})$, which will depend on stellar intensity.

Using equation (B3), we can determine photon shot noise ($x = 0$ and $i'_d = 0$) and detector noise ($x \neq 0$ and $i'_d \neq 0$) on X , Y , and DC. We can also compare these values to the observed fluctuations during each measurement.

$$\begin{bmatrix} \sigma_X \\ \sigma_Y \\ \sigma_{\text{DC}} \end{bmatrix}_{\text{shot}} = \gamma_0 \begin{bmatrix} B_{\text{AC}} \\ B_{\text{AC}} \\ \min(B_{\text{max}}, B_{\text{detector}}) \end{bmatrix}^{1/2}, \quad (\text{B5a})$$

$$\begin{bmatrix} \sigma_X \\ \sigma_Y \\ \sigma_{\text{DC}} \end{bmatrix}_{\text{detector}} = \gamma \begin{bmatrix} B_{\text{AC}} \\ B_{\text{AC}} \\ \min(B_{\text{max}}, B_{\text{detector}}) \end{bmatrix}^{1/2}, \quad (\text{B5b})$$

$$\begin{bmatrix} \sigma_X \\ \sigma_Y \\ \sigma_{\text{DC}} \end{bmatrix}_{\text{obs}} = \begin{bmatrix} \text{std}(X_{\text{src}})^2 + \text{std}(X_{\text{sky}})^2 \\ \text{std}(Y_{\text{src}})^2 + \text{std}(Y_{\text{sky}})^2 \\ \text{std}(\text{DC}_{\text{src}})^2 + \text{std}(\text{DC}_{\text{sky}})^2 \end{bmatrix}^{1/2}. \quad (\text{B5c})$$

Here, $\gamma_0 \equiv 2eGT_A\text{DC}$, $\gamma \equiv 2eG^{1+x}T_A(\text{DC} + i'_dT_A)$, and ‘‘std’’ indicates the sample standard deviation. We now relate this quantity to fluctuations in the observables X , Y , and DC. By propagating error through equation (4), we find polarimetric uncertainty of a measurement to be related to uncertainty in X , Y , and DC according to

$$\sigma_P = \frac{\sqrt{2}}{E_{\text{PEM}}\text{DC}} \left\{ \frac{1}{t_{\text{AC}}} \left[\frac{X^2\sigma_X^2 + Y^2\sigma_Y^2}{X^2 + Y^2} + \frac{1}{2}(E_{\text{PEM}}P\sigma_{\text{DC}})^2 \right] \right\}^{1/2}. \quad (\text{B6})$$

Finally, inserting equations (B5a) through (B5c) into equation (B6) yields the uncertainty in polarization from photon shot-noise, detector noise, and observed fluctuations, given as equations (5a) through (5c).

REFERENCES

- Aspin, C., Simmons, J. F. L., & Brown, J. C. 1981, *MNRAS*, 194, 283
- Bastien, P., Drissen, L., Menard, F., Moffat, A. F. J., Robert, C., & St-Louis, N. 1988, *AJ*, 95, 900
- Bastien, P., Vernet, E., Drissen, L., Ménard, F., Moffat, A. F. J., Robert, C., & St-Louis, N. 2007, in *The Future of Photometric, Spectrophotometric and Polarimetric Standardization*, ASP Conf. Ser. 364, ed. C. Sterken (San Francisco: ASP), 529
- Brown, J. C., Ignace, R., & Cassinelli, J. P. 2000, *A&A*, 356, 619
- Brown, J. C., & McLean, I. S. 1977, *A&A*, 57, 141
- Dolan, J. F., & Tapia, S. 1986, *PASP*, 98, 792
- . 1989, *APJ*, 344, 830
- Friend, D. B., & Cassinelli, J. P. 1986, *ApJ*, 303, 292
- Gies, D. R., Bolton, C. T., Thomson, J. R., Huang, W., McSwain, M. V., Riddle, R. L., Wang, Z., Wiita, P. J., Wingert, D. W., Csák, B., & Kiss, L. L. 2003, *ApJ*, 583, 424
- Heiles, C. 2000, *AJ*, 119, 923
- Hough, J. H., Lucas, P. W., Bailey, J. A., Tamura, M., Hirst, E., Harrison, D., & Bartholomew-Biggs, M. 2006, *PASP*, 118, 1302
- Kemp, J. C. 1969, *J. Opt. Soc. Am.*, 59, 950
- Kemp, J. C., Barbour, M. S., Parker, T. E., & Herman, L. C. 1979, *ApJ*, 228, L23
- Lucas, P. W., Hough, J. H., Bailey, J. A., Tamura, M., Hirst, E., & Harrison, D. 2008, *MNRAS*, submitted (astro-ph/0807.2568)
- McClintock, J. E., Shafee, R., Narayan, R., Remillard, R. A., Davis, S. W., & Li, L.-X. 2006, *ApJ*, 652, 518
- Milgrom, M. 1979, *A&A*, 76, 338
- Neuhäuser, R., Mugrauer, R., Fukugawa, M., Torres, G., & Schmidt, T. 2007, *A&A*, 462, 777
- Oke, J. B. 1961, *ApJ*, 133, 90
- Schmidt, G. D., Elston, R., & Lupie, O. 1992, *AJ*, 104, 1563
- Seager, S., Whitney, B. A., & Sasselov, D. D. 2000, *ApJ*, 540, 504
- Stam, D. M., Hovenier, J. W., & Waters, L. B. F. M. 2004, *A&A*, 428, 663
- Wolinski, K. G., Dolan, J. F., Boyd, P. T., Biggs, J. D., Nelson, M. J., Percival, J. W., Taylor, M., & van Citters, G. W. 1996, *ApJ*, 457, 859
- Ziólkowski, J. 2005, *MNRAS*, 358, 851