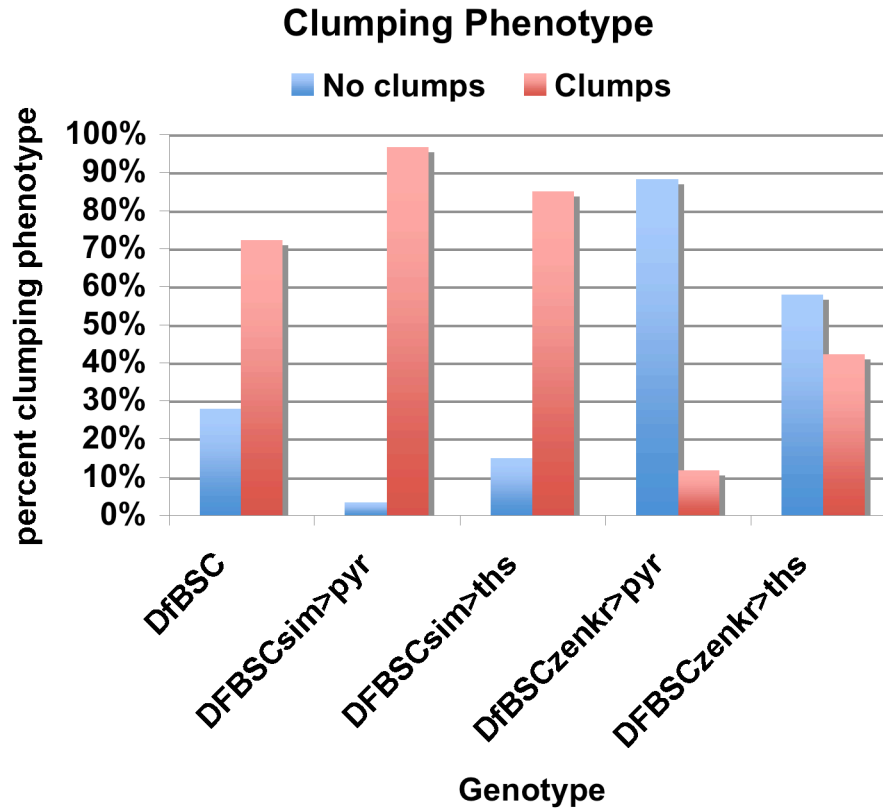


Frequency of clumping phenotype in embryos ectopically expressing *pyramus* and *thisbe*



Genotype	Total Number	No clumps	Clumps	p-value
DfBSC25	36	10	26	
DFBSC25,sim>pyr	30	1	29	<0.01
DFBSC25,sim>ths	40	6	34	n.s
DfBSC25,zenVRE.Kr>pyr	17	15	2	< 0.0001
DFBSC25,zenVRE.Kr>ths	19	11	8	n.s