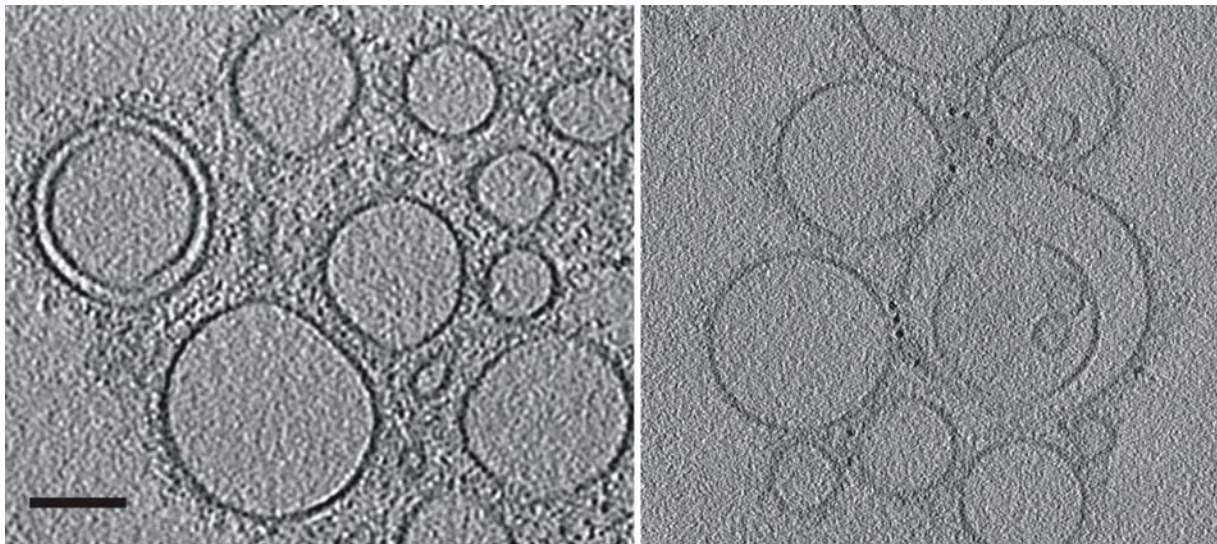


## Supplemental Data

### Cryo-Electron Tomography of Homophilic Adhesion

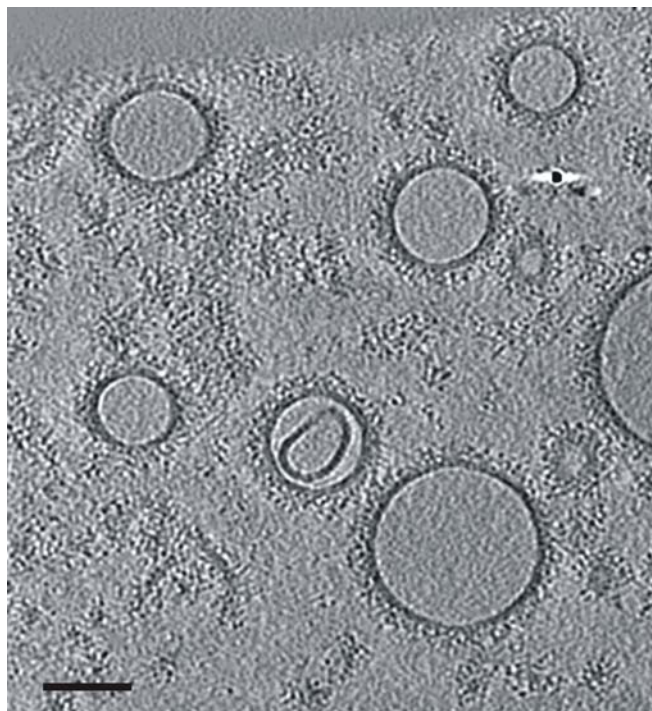
#### Mediated by the Neural Cell Adhesion Molecule L1

Yongning He, Grant J. Jensen, and Pamela J. Bjorkman

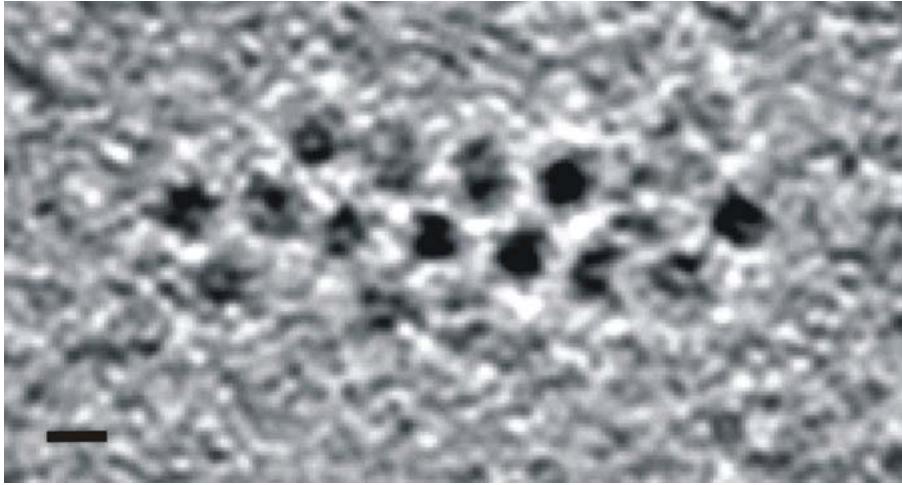


**Figure S1. Tomographic Slices (1.4 nm) of Fields of  $L1_{\text{ecto (CC)}}$ - and  $L1_{\text{ecto (OM)}}$ -Coupled Liposomes (left and right, respectively)**

These images were derived from data collected on two different CCDs. The figure on the left was binned by two in order to see the interface more clearly; the one on the right was not binned ( $6.8\text{\AA}/\text{pixel}$ ). Bar = 100 nm.



**Figure S2. Tomographic Slice (1.4 nm) of a Field of Ig<sub>1-4del</sub>(OM)-Coupled Liposomes**  
Bar = 100 nm.



**Figure S3. Tomographic Slice (1.4 nm) Showing An Array of Adhesion Dots at the Interface between Two L<sub>1ecto</sub>(OM)-Coupled Liposomes**  
Bar = 10 nm.