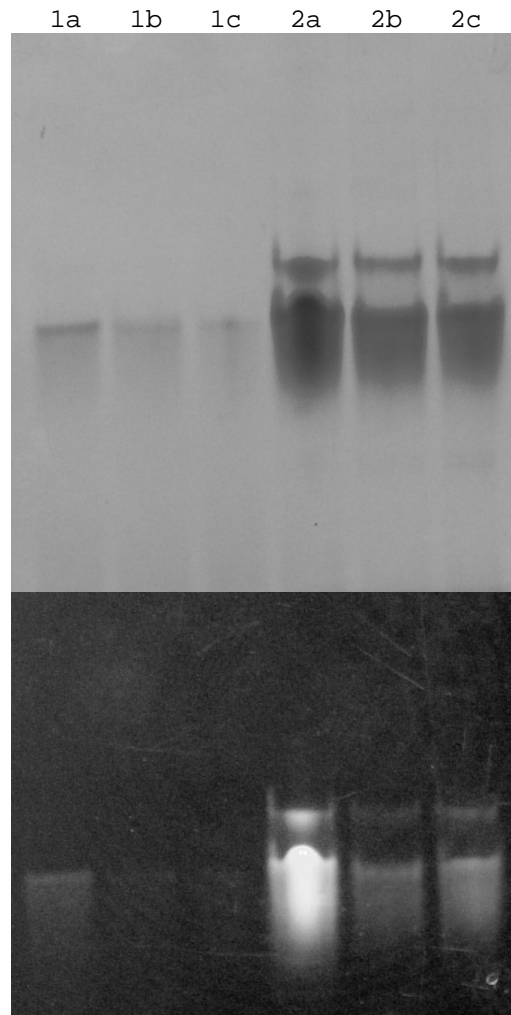


Supplementary Figure 6. Non-denaturing polyacrylamide gel electrophoresis of BFP variants. (Top) Coomassie staining and (Bottom) UV illumination prior to staining. (1) 5 μL of 0.5 mg/mL (20 μM), (2) 5 μL of 5 mg/mL (200 μM) protein. (a) BFP F64L/V163A, (b) BFP.A5, and (c) Azurite.



Supplementary Figure 6. BFP crystal structure showing the BFP.1B3 mutations near the chromophore. Image made using MOE.

