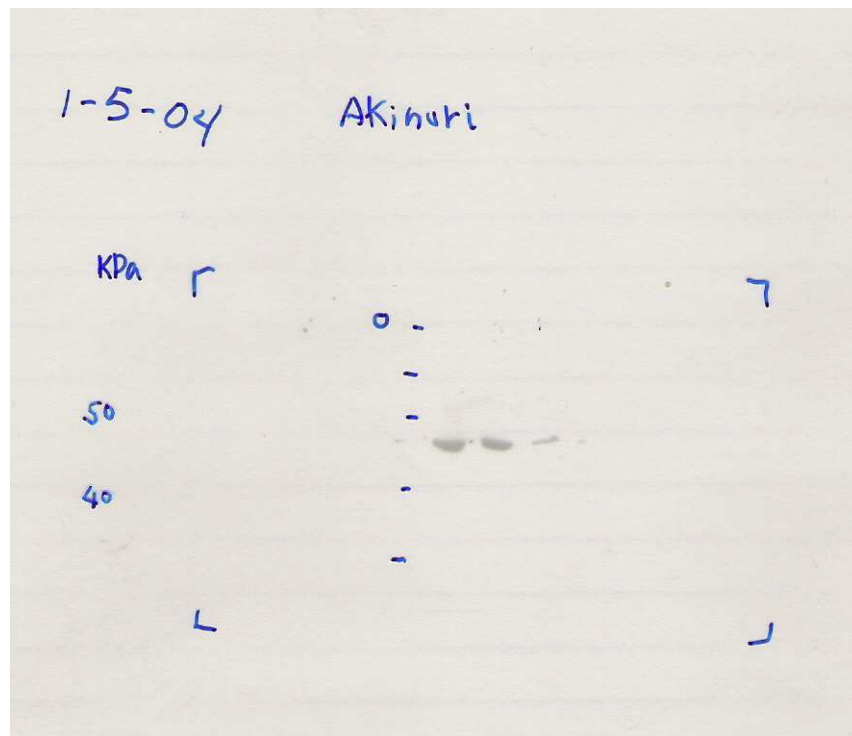


DNA sequencing results of PET28-CS5-ELF**

T251G

```
>12_09_03_F05_ickwon_elf53_efsseqf2_11.ab1      893      0      893
GTTGATTGTTGATCCACATCAGCTTTACCACCTGAAAGGAGACGCTGCAC
GACTTCCTTCGTAACCTTCTTTGAGGAAGATTTGCAGATTCGCTTCCGTCC
TTCCCTACTTCCCCTTTGGCGAACCTTCTGCAGAAGTGGACGTCATGGGTA
AAAACGGTAAATGGCTGGAAGTGTGGGCTGCGGGATGGTGCATCCGAAC
GTGTTGCGTAACGTTGGCATCGACCCGGAAGTTACTCTGGTTTGGCTT
CGGGATGGGGATGGAGCGTCTGACTATGTTGCGTTACGGCGTCACCGACC
TGC GTTCATTCTTCGAAAACGATCTGCGTTTCTCAAACAGTTTAAATAA
GGCAGGAATAGATTATGAAATTCAGTGAACGTGGTTACGCGAATGGGTG
AACCCGGCGATTGATAGCGATGCGCTGGCAAATCAAATCACTATGGCGGG
CCTGGAAGTTGGGGGATCCACTAGTTC TAGAGCGGCCGCCACCGCGGTGG
AGCTCCAATTCGCCCTATAGTGAGTCGTATTACAATCACTGGCCGTCGT
TTTACAACGTCGTGACTGGGAAAACCTGGCGTTACCCAACCTAATCGCC
TTGCATGCACCAATTCCTTGGCGGGCGGTGCTCACGGCCTCACCTACTAC
TGGGCTGCTTCCTATGCAGGAGTCGCATAAGGGAGAGCGTCGAGATCCCG
GACACCATCGAATGGCGCAAACCTTTCGCGGTATGGCATGATAGCGCCC
GGAAGAGATCCATTCAGGTTGGNTGATGTGAAACCAGTAACGTTATACGA
TGCCCCAAATATGCCGGTGTCTCTTATCGACCGTTTCCGCTTGGTGAACA
GCCACCACGTTTCTGCAAACCCGAAAAGGTGGAAGCGCATG
```

T251G
A294G



Western blot analysis of cell lysates (CS5-ELF-F) of 3h post-induction with 1 mM IPTG after purification using nickel affinity column. Lane 1: Marker; Lanes 2-4: cell lysates (CS5-ELF-F) of 3h post-induction.