

Interpreting LHC SUSY searches in the phenomenological MSSM

S. Sekmen^a, S. Kraml^b, J. Lykken^c, F. Moortgat^d, S. Padhi^e,
L. Pape^d, M. Pierini^f, H. B. Prosper^a, M. Spiropulu^{f,g}

^a *Department of Physics, Florida State University,
Tallahassee, Florida 32306, USA*

^b *Laboratoire de Physique Subatomique et de Cosmologie, UJF Grenoble 1,
CNRS/IN2P3, INPG, 53 Avenue des Martyrs, F-38026 Grenoble, France*

^c *Fermi National Accelerator Laboratory, P.O. Box 500, Batavia, IL 60510*

^d *Institute for Particle Physics, ETH Zurich, CH-8093 Zurich, Switzerland*

^e *University of California, San Diego, CA 92093, USA*

^f *CERN, CH-1211 Geneva 23, Switzerland*

^g *Department of Physics, Caltech, Pasadena, California 91125, USA*

Abstract

We interpret within the phenomenological MSSM (pMSSM) the results of SUSY searches published by the CMS collaboration based on the first $\sim 1 \text{ fb}^{-1}$ of data taken during the 2011 LHC run at 7 TeV. The pMSSM is a 19-dimensional parametrization of the MSSM that captures most of its phenomenological features. It encompasses, and goes beyond, a broad range of more constrained SUSY models. Performing a global Bayesian analysis, we obtain posterior probability densities of parameters, masses and derived observables. In contrast to constraints derived for particular SUSY breaking schemes, such as the CMSSM, our results provide more generic conclusions on how the current data constrain the MSSM.

1 Introduction

With the successful operation of the Large Hadron Collider (LHC) and its detectors in 2010–11, and with excellent prospects for the future, the LHC is ready to shed light on the most pressing open issues in particle physics: the mechanism of electroweak (EW) symmetry breaking and the nature of the new physics beyond the Standard Model that stabilizes the EW scale (see, for example, Ref. [1]).

A wealth of theories that extend the Standard Model (SM) have been put forth during the past decades. Among these, supersymmetry (SUSY) is arguably the best motivated and certainly the most thoroughly studied (see, for example, Refs. [2, 3] for recent reviews). Indeed, searches for SUSY rank among the primary experimental objectives of the LHC. So far, however, no signal of new physics has been observed at $\sqrt{s} = 7$ TeV [4]; consequently, the SUSY mass scale has been pushed into the TeV region.

It is important to note, however, that in the interpretation of their experimental results, both the ATLAS and CMS collaborations typically use a very special theoretical model, the so-called Constrained Minimal Supersymmetric Standard Model (CMSSM), which is characterized by just four-and-a-half parameters [5, 6]: a universal scalar mass m_0 , gaugino mass $m_{1/2}$ and trilinear coupling A_0 defined at the GUT scale $M_{\text{GUT}} \sim 10^{16}$ GeV, plus $\tan\beta$ and $\text{sign}(\mu)$. The simplifying assumption of universality at the GUT scale makes the model very predictive and a convenient showcase for SUSY phenomenology. Indeed, it is interesting to present limits within the CMSSM because it provides (to some degree) an easy way to show performances, compare limits or reaches, etc.. On the other hand, the interpretation of experimental results in the $(m_0, m_{1/2})$ plane risks imposing unwarranted constraints on SUSY, as many mass patterns and signatures that are possible *a priori* are not covered in the CMSSM. The same of course holds true for Simplified Models [7].

In this Letter, we therefore present a more general approach, using a 19-dimensional parametrization of the MSSM called the *phenomenological MSSM* (pMSSM) [8]. Using results from three independent CMS analyses—the α_T hadronic [9], the same-sign dilepton [10] and the opposite-sign dilepton [11] analyses—we derive constraints on the SUSY particles with as few simplifying assumptions as possible.

The pMSSM parameter space has been thoroughly scanned and studied previously in Refs. [12–15]. It is important to note that [12] “*the pMSSM leads to a much broader set of predictions for the properties of the SUSY partners as well as for a number of experimental observables than those found in any of the conventional SUSY breaking scenarios such as mSUGRA [CMSSM]. This set of models can easily lead to atypical expectations for SUSY signals at the LHC.*”

The purpose of this Letter is thus to initiate a systematic study that begins with

an assessment of what current LHC data tell us, and do not tell us, about the pMSSM. We choose to conduct our study using the Bayesian approach [16, 17] because of its conceptual coherence and the direct (intuitive) manner in which probabilistic statements are interpreted, namely, as the degree of belief, or plausibility, of a given statement. A detailed Bayesian study of the pMSSM was performed in Ref. [13]; however this was before LHC data were available.¹

We introduce the pMSSM and its parametrization in Section 2, and outline our analysis in Section 3. Our results are presented in Section 4. Section 5 contains our conclusions.

2 Parametrization

The pMSSM, a 19-dimensional realization [8] of the R-parity conserving MSSM with parameters defined at the SUSY scale, $M_{\text{SUSY}} = \sqrt{m_{\tilde{t}_1} m_{\tilde{t}_2}}$, employs only a few plausible assumptions motivated by experiment: there are no new CP phases, the sfermion mass matrices and trilinear couplings are flavor-diagonal, the first two generations of sfermions are degenerate and their trilinear couplings are negligible. In addition, we assume that the lightest supersymmetric particle (LSP) is the lightest neutralino, $\tilde{\chi}_1^0$. We thus arrive at a proxy for the MSSM characterized by 19 real, weak-scale, SUSY Lagrangian parameters:

- the gaugino mass parameters M_1 , M_2 , and M_3 ;
- the ratio of the Higgs VEVs $\tan \beta = v_2/v_1$;
- the higgsino mass parameter μ and the pseudo-scalar Higgs mass m_A ;
- 10 sfermion mass parameters $m_{\tilde{F}}$, where $\tilde{F} = \tilde{Q}_1, \tilde{U}_1, \tilde{D}_1, \tilde{L}_1, \tilde{E}_1, \tilde{Q}_3, \tilde{U}_3, \tilde{D}_3, \tilde{L}_3, \tilde{E}_3$ (imposing $m_{\tilde{Q}_1} \equiv m_{\tilde{Q}_2}$, $m_{\tilde{L}_1} \equiv m_{\tilde{L}_2}$, etc.), and
- 3 trilinear couplings A_t , A_b and A_τ ,

in addition to the SM parameters.

For each pMSSM point, we use `SoftSUSY3.1.6` [19] to compute the SUSY spectrum, `SuperIso3.0` [20] to compute the low-energy constraints, `micrOMEGAS2.4` [21] for the SUSY mass limits, and `HiggsBounds2.0.0` [22] for the limit on the h^0 mass². Moreover, we use `SUSYHIT` (`SDECAY1.3b`, `HDECAY3.4`) [23] to produce SUSY and Higgs decay

¹In Ref. [18], the CMSSM gluino–squark mass limits based on 1 fb^{-1} of LHC data were applied to a dark matter global fit in a 9-parameter realization of the MSSM.

²In evaluating the Higgs mass limit, we apply a Gauss-distributed theoretical uncertainty with $\sigma = 1.5 \text{ GeV}$ to the m_h computed by with `SoftSUSY`, cf. row 8 in Table 1.

Table 1: The preLHC experimental results that are the basis of our pMSSM parameter scan using Markov Chain Monte Carlo (MCMC) sampling. We re-weight a posteriori with the new limit $BR(B_s \rightarrow \mu\mu) \leq 1.08 \times 10^{-8}$ at 95% CL [31]. However, this has hardly any effect.

i	Observable μ_i	Experimental result D_i	Likelihood function $L(D_i \mu_i)$
1	$BR(b \rightarrow s\gamma)$ [25,26]	$(3.55 \pm 0.34) \times 10^{-4}$	Gaussian
2	$BR(B_s \rightarrow \mu\mu)$ [27]	$\leq 4.7 \times 10^{-8}$	$1/(1 + \exp(\frac{\mu_2 - D_2}{0.01D_2}))$
3	$R(B_u \rightarrow \tau\nu)$ [27]	1.66 ± 0.54	Gaussian
4	Δa_μ [28]	$(28.7 \pm 8.0) \times 10^{-10}$ [e^+e^-] $(19.5 \pm 8.3) \times 10^{-10}$ [taus]	Weighted Gaussian average
5	m_t [29]	173.3 ± 1.1 GeV	Gaussian
6	$m_b(m_b)$ [27]	$4.19^{+0.18}_{-0.06}$ GeV	Two-sided Gaussian
7	$\alpha_s(M_Z)$ [30]	0.1176 ± 0.002	Gaussian
8	m_h	LEP&Tevatron (HiggsBounds [22])	$L_8 = 1$ if allowed. $L_8 = 10^{-9}$ if m'_h sampled from $Gauss(m_h, 1.5)$ is excluded.
9	sparticle masses	LEP (micrOMEGAs [21])	$L_9 = 1$ if allowed $L_9 = 10^{-9}$ if excluded

tables, and micrOMEGAs2.4 [21] to compute the LSP relic density and direct dection cross sections. The various codes are interfaced using the SUSY Les Houches Accord [24].

3 Analysis

As noted in the Introduction, the purpose of this Letter is to assess what current data tell us, and do not tell us, about the pMSSM. It is convenient to partition these data into preLHC and LHC experimental results, which we list in Tables 1 and 2, respectively. We use the former to construct a prior $\pi(\theta)$ on the pMSSM parameter space, which, when combined with a likelihood function, $L(\text{LHC}|\theta)$, pertaining to the LHC results, yields the posterior density $p(\theta|\text{LHC}) \sim L(\text{LHC}|\theta) \pi(\theta)$ over the pMSSM parameter space. Here, θ denotes the 19 pMSSM parameters M_1, \dots, A_τ . We also consider the SM parameters m_t , $m_b(m_b)$ and $\alpha_s(M_Z)$, which are treated as nuisance parameters (see Table 1). This partitioning allows us to assess the impact of the current LHC results on the pMSSM parameter space while being consistent with other existing constraints.

Table 2: LHC measurements used in the current study. The α_T variable is effective in suppressing background from light-quark QCD. SS 2ℓ , and OS 2ℓ denote same-sign and opposite-sign dileptons, respectively. The α_T [9], SS [10], and OS [11] results were published by the CMS Collaboration.

j	Analysis and search region (values in GeV)	Observed event count (N_j)	Data-driven SM BG estimate ($B_j \pm \delta B_j$)
1	α_T hadronic, $275 \leq H_T < 325$	782	$787.4^{+31.5}_{-22.3}$
2	α_T hadronic, $325 \leq H_T < 375$	321	$310.4^{+8.4}_{-12.4}$
3	α_T hadronic, $375 \leq H_T < 475$	196	$202.1^{+8.6}_{-9.4}$
4	α_T hadronic, $475 \leq H_T < 575$	62	$60.4^{+4.2}_{-3.0}$
5	α_T hadronic, $575 \leq H_T < 675$	21	$20.3^{+1.8}_{-1.1}$
6	α_T hadronic, $675 \leq H_T < 775$	6	$7.7^{+0.8}_{-0.5}$
7	α_T hadronic, $775 \leq H_T < 875$	3	$3.2^{+0.4}_{-0.2}$
8	α_T hadronic, $875 \leq H_T$	1	$2.8^{+0.4}_{-0.2}$
9	SS 2ℓ , $H_T > 400$, $\cancel{E}_T > 120$	1	2.3 ± 1.2
10	OS 2ℓ , $H_T > 300$, $\cancel{E}_T > 275$	8	4.2 ± 1.3

The prior $\pi(\theta)$ is constructed as follows. We construct the joint likelihood function of the seven independent preLHC measurements $D \equiv D_1, \dots, D_7$, of the associated observables $\mu \equiv \mu_1, \dots, \mu_7$, listed in Table 1. From Bayes theorem, with a flat prior $\pi(\mu) = \text{constant}$ ³ for each of the seven observables, we obtain the posterior density $p(\mu|D) = L(D|\mu)\pi(\mu)/p(D)$ from which we create a random sample of 1.5×10^7 pMSSM parameter points using a standard MCMC technique. During the sampling, we impose the constraints on the mass, m_h , of the light neutral Higgs boson (given in row 8 of Table 1) and the SUSY mass limits (row 9). Moreover, as we cannot scan over an infinite volume, we restrict the sampling to the sub-space $|M_i|, |\mu|, m_A, m_{\tilde{F}} \leq 3$ TeV, $|A_{t,b,\tau}| \leq 7$ TeV, and $2 \leq \tan \beta \leq 60$.⁴ The MCMC sampling from $p(\mu|D)$ together with the predictions $\mu_i = f_i(\theta)$ induce a distribution over θ that we take as our prior over θ . By construction, the resulting set of pMSSM points are automatically consistent with the preLHC experimental constraints listed in Table 1.

From the 1.5×10^7 Markov-chain points we draw a subset of 5×10^5 points, for each

³Note that for a Gaussian density, the reference prior is flat (see, for example, Ref. [32] and references therein). We will comment on prior dependence in the results section.

⁴Evidently, for quantities that are not well bounded by the data within the chosen sub-space, the probabilities we calculate will be somewhat sensitive to the choice of sub-space.

of which we generate 10K events using `PYTHIA6` [33]. (We checked that both the original chains and their subsets had converged.) We simulate the response of the CMS detector using the publicly available general purpose detector simulation package `Delphes` [34]. Note, that for studies of this scope, a fast, accurate, detector simulation is essential. Regarding LHC results, we use the following three published CMS SUSY analyses:

- the α_T hadronic analysis [9], based on 1.1 fb^{-1} , ≥ 2 jets and $\alpha_T > 0.55$, where α_T is used to suppress light-flavor QCD, and 8 disjoint bins in H_T , the scalar sum of jet transverse momenta;
- the same-sign (SS) di-lepton analysis [10], based on 0.98 fb^{-1} , with 8 overlapping analysis regions of which we use one, $H_T > 400 \text{ GeV}$, missing transverse energy $\cancel{E}_T > 120 \text{ GeV}$, and
- the opposite-sign (OS) di-lepton analysis [11], based on 0.98 fb^{-1} , with 2 overlapping analysis regions of which we use one, $H_T > 300 \text{ GeV}$ and $\cancel{E}_T > 275 \text{ GeV}$.

We take the observed event counts and background estimates directly from the official results of these analyses. For each of the ten results listed in Table 2, we assume a Poisson likelihood,

$$\text{Poisson}(N_j | s_j + b_j), \quad (1)$$

with observed count N_j and expected count $s_j + b_j$, where s_j and b_j are the expected signal and background counts, respectively, for the j^{th} experimental result.⁵ Each pMSSM point yields predictions for the values $s_j, j = 1, \dots, 10$. We model the (evidence-based) prior for the background parameters b_i with a gamma density,

$$\text{gamma}(K_j b_j | Q_j + 1) = e^{-K_j b_j} (K_j b_j)^{Q_j} / \Gamma(Q_j + 1). \quad (2)$$

Here $Q_j \equiv (B_j / \delta B_j)^2$ and $K_j \equiv B_j / \delta B_j^2$, with $B_j \pm \delta B_j$ the background estimate in which δB_j is taken to be half the width of the confidence intervals listed in Table 2. For each pMSSM point, and for each result listed in Table 2, we compute the (marginal) likelihood $p(N_j | s_j)$ by integrating over the expected background b_j . Since, by construction, the results are disjoint, the overall LHC likelihood $L(\text{LHC} | \theta)$ is simply the product

$$L(\text{LHC} | \theta) = \prod_{j=1}^{10} p(N_j | s_j(\theta)). \quad (3)$$

The posterior density $p(\theta | \text{LHC}) \propto L(\text{LHC} | \theta) \pi(\theta)$ is approximated by weighting each pMSSM point by $L(\text{LHC} | \theta)$. Finally, we normalize the posterior density over the pMSSM sub-space.

⁵We use lower-case letters for parameters and upper-case letters for measured quantities.

4 Results

We now present the results of this analysis. Figure 1 shows marginalized 1-dimensional (1D) posterior probability density functions of various sparticle and Higgs masses. The light blue histograms represent the preLHC probability densities, *i.e.* taking into account only the data listed in Table 1. Note that the $\tilde{\chi}_1^\pm$ and $\tilde{e}_L/\tilde{\mu}_L$ are bound to be light by the Δa_μ constraint. Note also that our preLHC distributions differ somewhat from those presented in Ref. [13] as we have chosen not to impose any constraint on Ωh^2 .

The blue, green and red lines show, respectively, the effects of the OS di-lepton, SS di-lepton and α_T hadronic CMS analyses. The dashed black lines show the final posterior densities after inclusion of the results of all three analyses. It is evident that with current LHC data-sets, the di-lepton analyses have very little effect on the posterior densities, while the α_T hadronic analysis pushes the gluino and 1st/2nd-generation squark masses towards higher values. We also note the slight effect on the $\tilde{\chi}_1^0$ LSP mass. The masses of other sparticles, including charginos, sleptons and 3rd-generation squarks, are basically unaffected by the current LHC results. This contrasts with the CMSSM case, in which all these masses are correlated through their dependence on $m_{1/2}$ and m_0 . Finally, we see that the Higgs mass distributions, including that of m_h , remain unaffected by current SUSY searches.

The 1D distributions of $BR(b \rightarrow s\gamma)$, $BR(B_s \rightarrow \mu^+\mu^-)$, Δa_μ and the neutralino relic density Ωh^2 are shown in Fig. 2. In Fig. 3 we show the posterior densities of some SUSY Lagrangian parameters: M_2 , μ , A_t and $\tan\beta$. We observe a slight preference for $\mu > 0$ with $p(\mu > 0) \approx 0.53$, both pre- and post-LHC startup. This is, however, inconclusive (as is the preference for $\mu < 0$ found in [13]). We confirm the sign correlations between M_i and μ , and between A_t and μ , already demonstrated in Ref. [13]. The corresponding plots are available at Ref. [36].

It is also instructive to consider correlations between different sparticle masses. Figure 4 demonstrates the impact of the CMS analyses in the $(m_{\tilde{u}_L}, m_{\tilde{g}})$ and $(m_{\tilde{u}_R}, m_{\tilde{g}})$ planes. It is interesting to note that the boundaries of the LHC 95% Bayesian credible regions (BCRs) approximately match the 95% CL exclusion limits in the CMSSM.⁶ We deduce that $m_{\tilde{g},\tilde{q}} \gtrsim 1.1$ TeV for $m_{\tilde{g}} \simeq m_{\tilde{q}}$, and $m_{\tilde{g}} \gtrsim 700$ GeV for $m_{\tilde{q}} \gg m_{\tilde{g}}$, is a robust conclusion that persists beyond the CMSSM or Simplified Models.⁷

Our approach moreover allows the study of dependencies between other masses in

⁶The way to calculate the BCRs is to some extent a matter of choice. Here we select the region containing the highest posterior density values. This is equivalent to choosing the minimal area that contains the 68% or 95% of the total volume.

⁷The characteristics of the pMSSM points with $m_{\tilde{g}} < 700$ GeV that are *not* excluded by the current SUSY analyses will be the subject of a subsequent study; see also Refs. [15, 35] in this context.

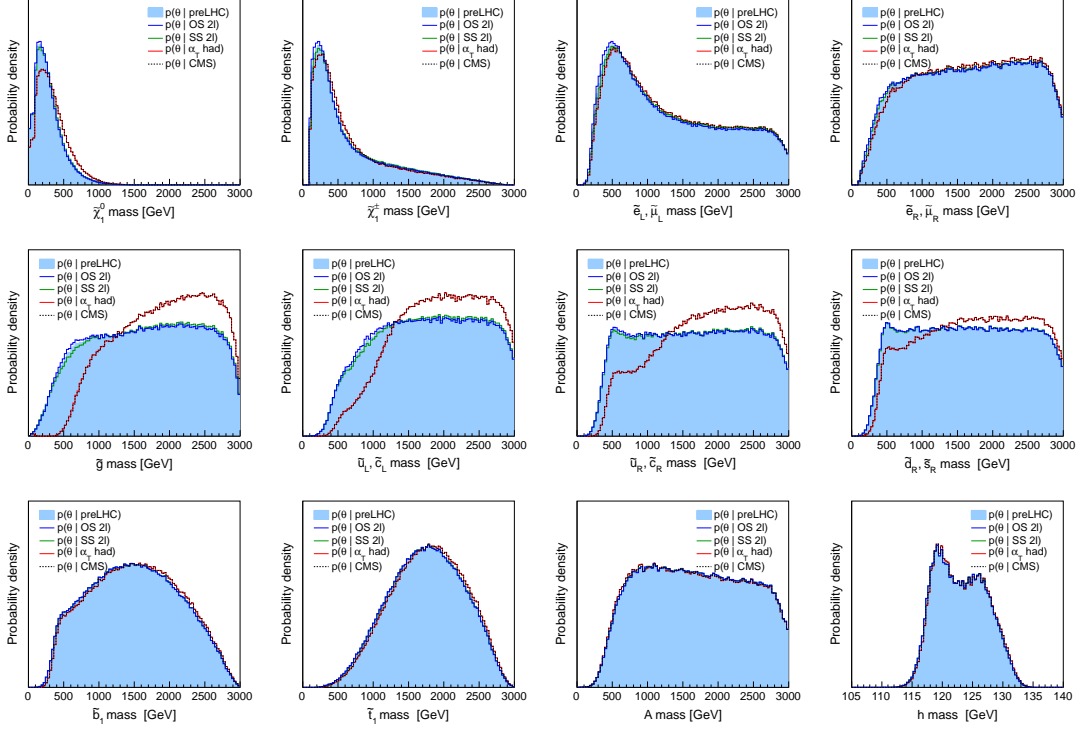


Figure 1: Marginalized 1D posterior densities of sparticle and Higgs masses.

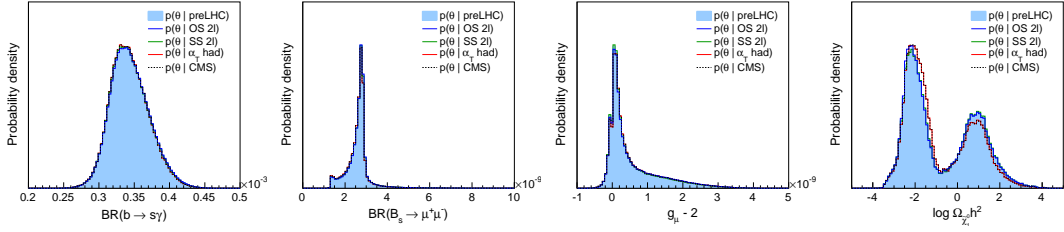


Figure 2: Marginalized 1D posterior densities of $BR(b \rightarrow s\gamma)$, $BR(B_s \rightarrow \mu^+\mu^-)$, SUSY contribution to $(g-2)_\mu$, and neutralino relic density Ωh^2 .

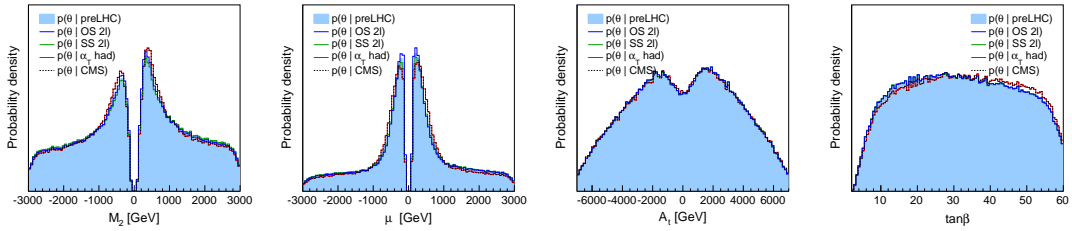


Figure 3: Marginalized 1D posterior densities for M_2 , μ , A_t and $\tan\beta$.

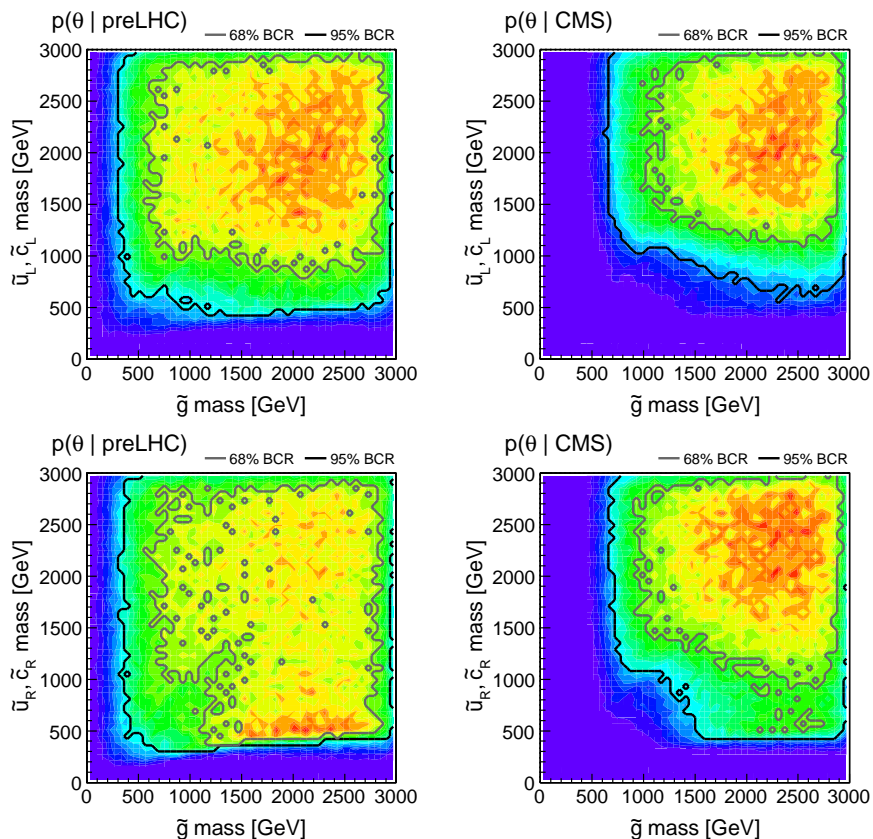


Figure 4: Marginalized 2D posterior densities of gluino versus squark masses, on the left before and on the right after taking the CMS searches into account. The grey and black contours enclose the 68% and 95% Bayesian credible regions, respectively.

a straightforward way, as illustrated in Fig. 5 by means of posterior densities in the $(m_{\tilde{\chi}_1^0}, m_{\tilde{g}})$ and $(m_{\tilde{\chi}_1^\pm}, m_{\tilde{g}})$ planes. We now see explicitly that bounds on the gluino mass are not reflected in chargino and neutralino masses, as would be the case in the CMSSM (or actually any scheme with gaugino-mass universality). Moreover, such plots permit other interesting observations. In particular, we see how the sensitivity of CMS searches to the gluino mass worsens for increasing neutralino or chargino mass. Additional plots of 1D and 2D distributions are available at Ref. [36].

At this point a comment is in order regarding prior dependence. Our preLHC distributions are of course subject to the same prior dependence that was discussed in Ref. [13], and persists for quantities that are not much affected by the CMS measurements. However, we expect that as the effect of data becomes more influential, the sensitivity to the prior diminishes. In fact, for the gluino and $1^{st}/2^{nd}$ generation squark masses, the likelihood based on LHC data already dominates the prior. For these quantities the

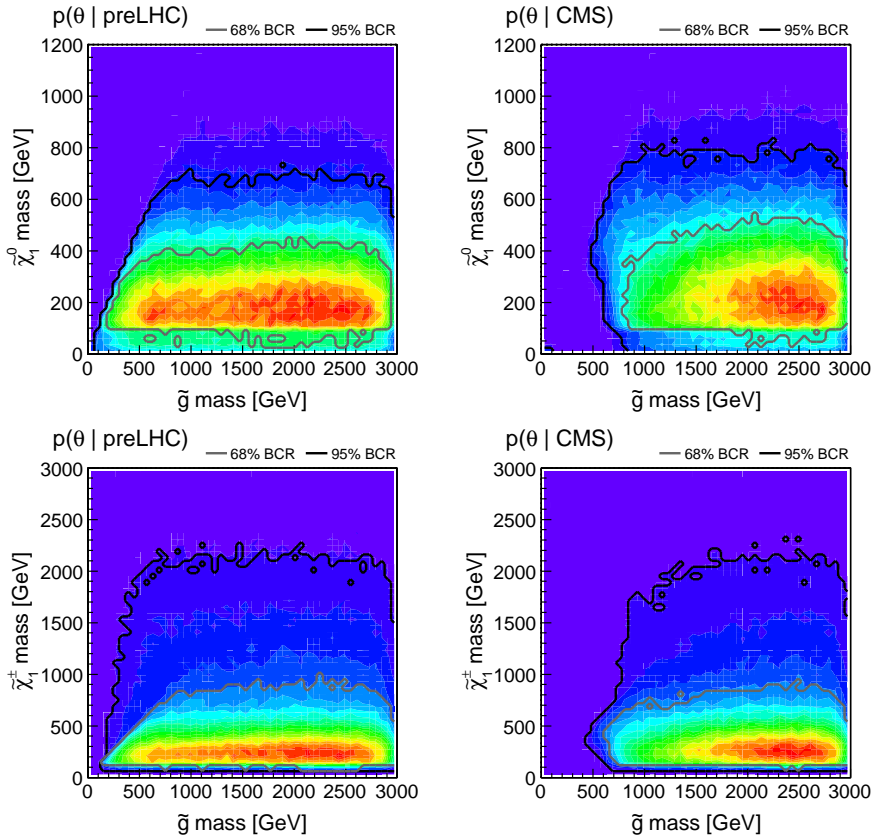


Figure 5: Marginalized 2D posterior densities of gluino versus neutralino and of gluino versus chargino mass, on the left before and on the right after taking the CMS searches into account. The grey and black contours enclose the 68% and 95% Bayesian credible regions, respectively.

posterior distributions are indeed found to be insensitive to the choice of priors. (This is also true for some other quantities such as the \tilde{t}_1 and h^0 masses, which are already well-constrained by preLHC data.)

It is also interesting to consider the interplay with other, non-SUSY, searches. Regarding the Higgs sector, in particular the results on $H/A \rightarrow \tau\tau$ may have some impact on the pMSSM global fit. ATLAS and CMS searches for $H/A \rightarrow \tau\tau$ currently exclude $\tan\beta \lesssim 10\text{--}20$ for $m_A \lesssim 250$ GeV, and $\tan\beta \lesssim 50\text{--}60$ for $m_A = 450\text{--}500$ GeV [37]. While it will be interesting to include this in our global analysis, we note that our 95% BCR in the $(\tan\beta, m_A)$ plane, displayed in Fig. 6, starts at $m_A \approx 500$ GeV and shows no significant dependence on $\tan\beta$.

Finally, we illustrate in Fig. 7 the interplay with dark matter searches. On the left, we show the posterior density in the $(\Omega_\chi h^2, m_{\tilde{\chi}_1^0})$ plane. While matching the cosmologically

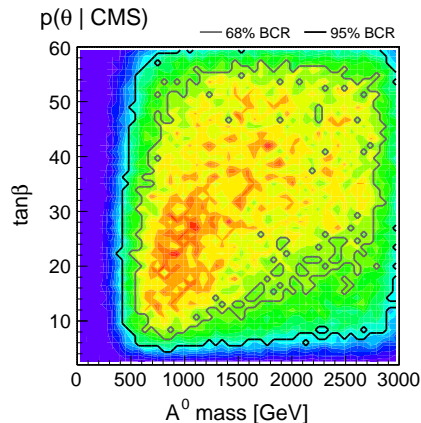


Figure 6: Marginalized 2D posterior density of $\tan\beta$ versus m_A . The grey and black contours enclose the 68% and 95% Bayesian credible regions, respectively. The preLHC distribution looks essentially the same.

observed value $\Omega h^2 = 0.1123 \pm 0.0035$ [38] needs a high degree of fine tuning, a $\tilde{\chi}_1^0$ that is at least part of the dark matter has a probability of about 60%; see also the right-most plot in Fig. 2. In fact there is a slight increase from $p(\Omega_\chi h^2 < 0.123) = 0.53$ with preLHC data to $p(\Omega_\chi h^2 < 0.123) = 0.59$ when including the CMS analyses, scarcely depending on the exact value of the upper bound on $\Omega_\chi h^2$. The right plot in Fig. 7 shows the posterior density of the spin-independent scattering cross section off protons, $\xi\sigma^{\text{SI}}(\tilde{\chi}_1^0 p)$, for the case that the LSP is at least part of the dark matter. Here we imposed $\Omega h^2 < 0.13$ and rescaled the cross section by a factor $\xi = \Omega h^2 / 0.1123$. Note that the most credible region is yet to be tested by the direct dark matter searches.

5 Conclusions

We presented the first interpretation of the 2011 LHC results based on $\sim 1 \text{ fb}^{-1}$ of data within the framework of the phenomenological MSSM—a sufficiently generic and well-motivated 19-dimensional parameterization of SUSY defined at the SUSY scale. We have used three independent LHC SUSY analyses, namely, the CMS α_T hadronic, opposite-sign dilepton and same-sign di-lepton analyses for this purpose, and expressed our results in terms of posterior probability densities.

Our bounds on gluino and $1^{\text{st}}/2^{\text{nd}}$ -generation squark masses match those derived in the CMSSM by the experimental collaborations. In addition, we were able to make independent statements on the masses and properties of the other SUSY (and Higgs) particles, and to show relations between masses that weaken the current bounds. In the chargino-versus-gluino-mass plane, for instance, the boundary of the 95% BCR can go

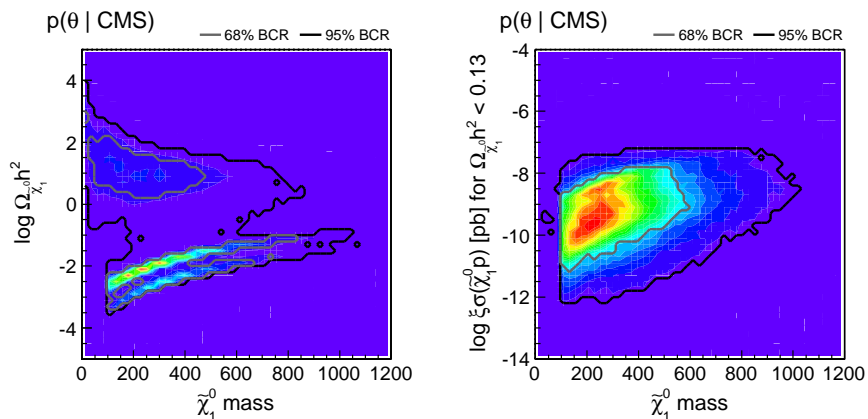


Figure 7: Marginalized 2D posterior densities of Ωh^2 (left) and rescaled spin-independent scattering cross section off protons (right) versus LSP mass. For the latter, only points with $\Omega h^2 < 0.13$ are taken into account. The grey and black contours enclose the 68% and 95% Bayesian credible regions, respectively.

down from $m_{\tilde{g}} \approx 800$ GeV to $m_{\tilde{g}} \approx 400$ GeV, depending on the $\tilde{\chi}_1^\pm$ mass and the rest of the spectrum. Our results thus show that current SUSY searches at the LHC provide rather limited constraints on supersymmetry in general. With the currently available data and searches, we have indeed been able to probe only a small portion of the vast pMSSM parameter space, while many regions are still waiting to be explored. Being able to work constructively with generic multi-parameter models such as pMSSM will serve as a guide to identify the unexplored regions and devise a broader range of dedicated searches sensitive to these.

We have demonstrated in this study that the interpretation of LHC results in terms of broad classes of multi-parameter SUSY models is feasible with the currently available computational and statistical tools, and that it is indeed possible to make meaningful statements on the nature of such models and therefore on supersymmetry, in general. It will be interesting to extend our study to include also results from non-SUSY searches. Indeed, one of the major advantages of our approach is that it is very well suited for global analyses of multiple results from the LHC and elsewhere.

Acknowledgements

We thank J. Hewett and T. Rizzo for discussions on “SUSY without Prejudice” and related technical issues. Moreover, we thank F. Mahmoudi and K. Williams for help with interfacing `HiggsBounds`, and M. Mühlleitner for fixing `SUSYHIT`. This work was supported in part by the U.S. Department of Energy under Grant No. DE-FG02-97ER41022

and by IN2P3 under grant PICS FR-USA 5872.

References

- [1] G. F. Giudice, J. Phys. Conf. Ser. **110**, 012014 (2008), arXiv:0710.3294.
- [2] S. P. Martin, hep-ph/9709356.
- [3] D. J. H. Chung *et al.*, Phys. Rept. **407**, 1 (2005), hep-ph/0312378.
- [4] H. Bachacou, *BSM Results from LHC*, talk at Lepton-Photon 2011, 22–27 Aug. 2011, Tata Institute of Fundamental Research, Mumbai, India.
- [5] A. H. Chamseddine, R. L. Arnowitt, P. Nath, Phys. Rev. Lett. **49**, 970 (1982); R. Barbieri, S. Ferrara, C. A. Savoy, Phys. Lett. **B119**, 343 (1982); L. E. Ibanez, Phys. Lett. **B118**, 73 (1982); L. J. Hall, J. D. Lykken, S. Weinberg, Phys. Rev. **D27**, 2359-2378 (1983); for a review see, e.g., P. Nath, hep-ph/0307123.
- [6] G. L. Kane, C. F. Kolda, L. Roszkowski, J. D. Wells, Phys. Rev. **D49**, 6173 (1994), hep-ph/9312272; H. Baer, C. -H. Chen, R. B. Munroe, F. E. Paige, X. Tata, Phys. Rev. **D51**, 1046-1050 (1995), hep-ph/9408265.
- [7] D. Alves *et al.*, arXiv:1105.2838.
- [8] MSSM Working Group, A. Djouadi *et al.*, *The Minimal supersymmetric standard model: Group summary report*, hep-ph/9901246.
- [9] CMS Collaboration, arXiv:1109.2352.
- [10] CMS Collaboration, CMS-PAS-SUS-11-010.
- [11] CMS Collaboration, CMS-PAS-SUS-11-011.
- [12] C. F. Berger, J. S. Gainer, J. L. Hewett and T. G. Rizzo, JHEP **02**, 023 (2009), arXiv:0812.0980.
- [13] S. S. AbdusSalam, B. C. Allanach, F. Quevedo, F. Feroz and M. Hobson, Phys. Rev. **D81**, 095012 (2010), arXiv:0904.2548.
- [14] J. A. Conley, J. S. Gainer, J. L. Hewett, M. P. Le, T. G. Rizzo, Eur. Phys. J. **C71**, 1697 (2011), arXiv:1009.2539.
- [15] J. A. Conley, J. S. Gainer, J. L. Hewett, M. P. Le and T. G. Rizzo, arXiv:1103.1697.

- [16] C. P. Robert, *The Bayesian Choice: from Decision-Theoretic Foundations to Computational Implementation*, 2nd ed. (Springer, New York, 2007).
- [17] A. O'Hagan, *Bayesian Inference*, Kendall's Advanced Theory of Statistics Vol. 2B (Edward Arnold, London, 1994).
- [18] M. Farina, M. Kadastik, D. Pappadopulo, J. Pata, M. Raidal, A. Strumia, Nucl. Phys. **B853**, 607 (2011), arXiv:1104.3572v3.
- [19] B. Allanach, Comput. Phys. Commun. **143**, 305 (2002), hep-ph/0104145.
- [20] F. Mahmoudi, Comput. Phys. Commun. **180**, 1579 (2009), arXiv:0808.3144.
- [21] G. Belanger, F. Boudjema, A. Pukhov, and A. Semenov, Comput. Phys. Commun. **149**, 103 (2002), hep-ph/0112278; Comput. Phys. Commun. **174**, 577 (2006), hep-ph/0405253; Comput. Phys. Commun. **180**, 747 (2009), arXiv:0803.2360.
- [22] P. Bechtle, O. Brein, S. Heinemeyer, G. Weiglein, and K. E. Williams, Comput. Phys. Commun. **181**, 138 (2010), arXiv:0811.4169; Comput. Phys. Commun. **182**, 2605 (2011), arXiv:1102.1898.
- [23] A. Djouadi, M. Muhlleitner, and M. Spira, Acta Phys. Polon. **B38**, 635 (2007), hep-ph/0609292.
- [24] P. Z. Skands *et al.*, JHEP **0407**, 036 (2004), hep-ph/0311123.
- [25] D. Asner *et al.* [Heavy Flavor Averaging Group], arXiv:1010.1589.
- [26] M. Misiak *et al.*, Phys. Rev. Lett. **98**, 022002 (2007), hep-ph/0609232.
- [27] K. Nakamura *et al.* [Particle Data Group], J. Phys. G **37**, 075021 (2010).
- [28] M. Davier, A. Hoecker, B. Malaescu, Z. Zhang, Eur. Phys. J. **C71**, 1515 (2011), arXiv:1010.4180.
- [29] Tevatron Electroweak Working Group, CDF and D0 Collaborations, arXiv:0903.2503.
- [30] C. Amsler *et al.* [Particle Data Group], Phys. Lett. B **667**, 1 (2008).
- [31] CMS and LHCb Collaborations, CMS-PAS-BPH-11-019, LHCb-CONF-2011-047, CERN-LHCb-CONF-2011-047.
- [32] L. Demortier, S. Jain, and H. B. Prosper, Phys. Rev. **D**, 034002 (2010).

- [33] T. Sjostrand, S. Mrenna, and P. Z. Skands, *JHEP* **0605**, 026 (2006), hep-ph/0603175.
- [34] S. Oryn, X. Rouby, and V. Lemaitre, arXiv:0903.2225.
- [35] S. S. AbdusSalam, *Phys. Lett. B* **705**, 331 (2011), arXiv:1106.2317.
- [36] <http://cern.ch/kraml/plots/pMSSM>.
- [37] A. Nikitenko, *ATLAS and CMS: BSM Higgs searches*, talk at “Implications of LHC results for TeV-scale physics”, 29 Aug.–2 Sep. 2011, CERN.
- [38] N. Jarosik *et al.*, *Astrophys. J. Suppl.* **192**, 14 (2011), arXiv:1001.4744.