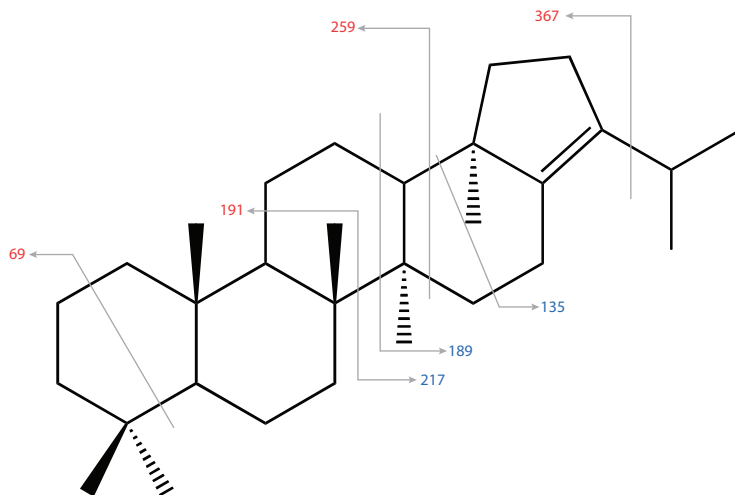
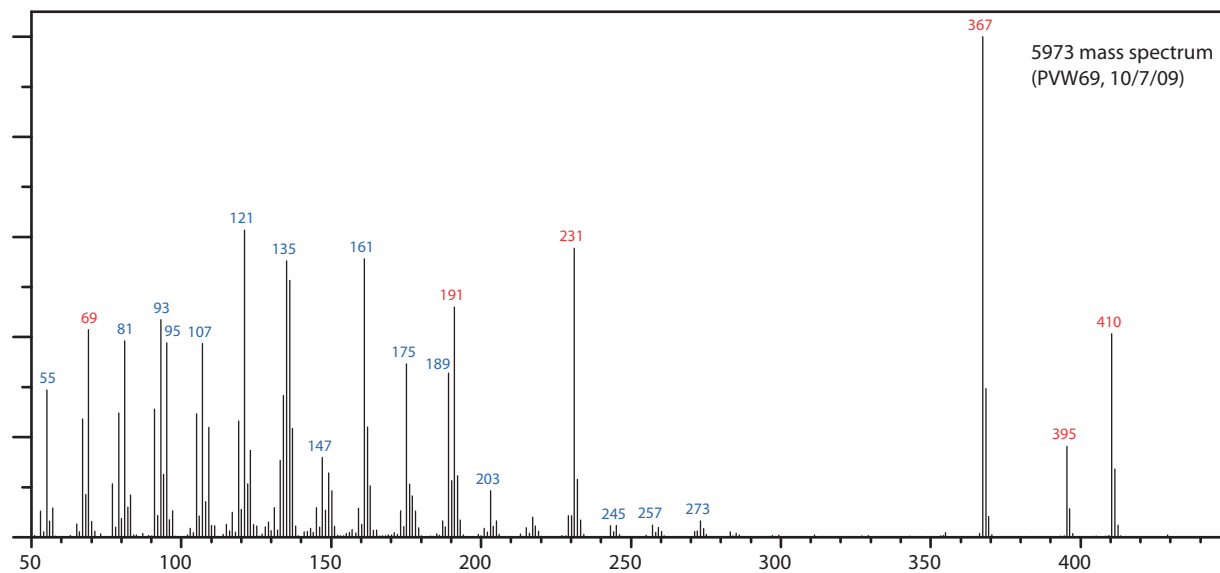
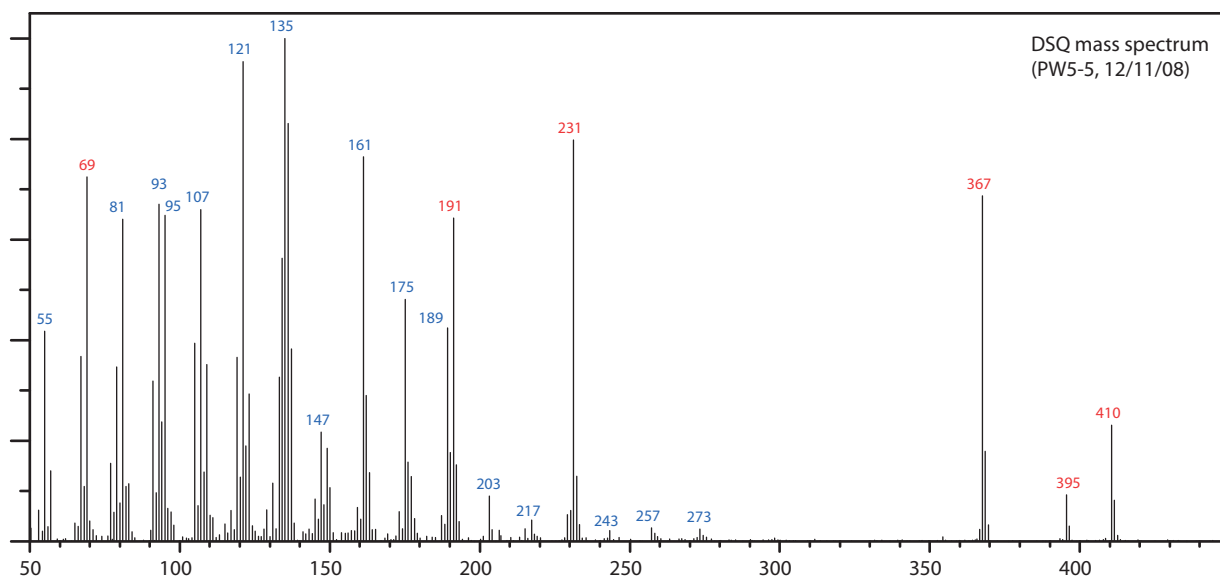


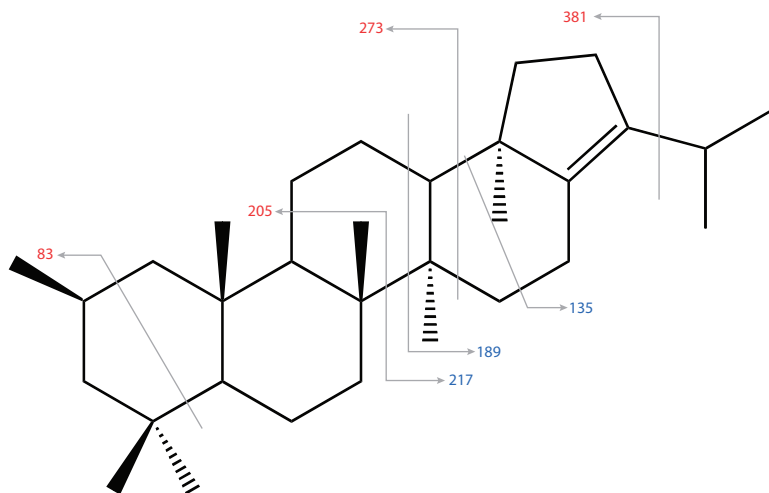
# Hop-17(21)-ene



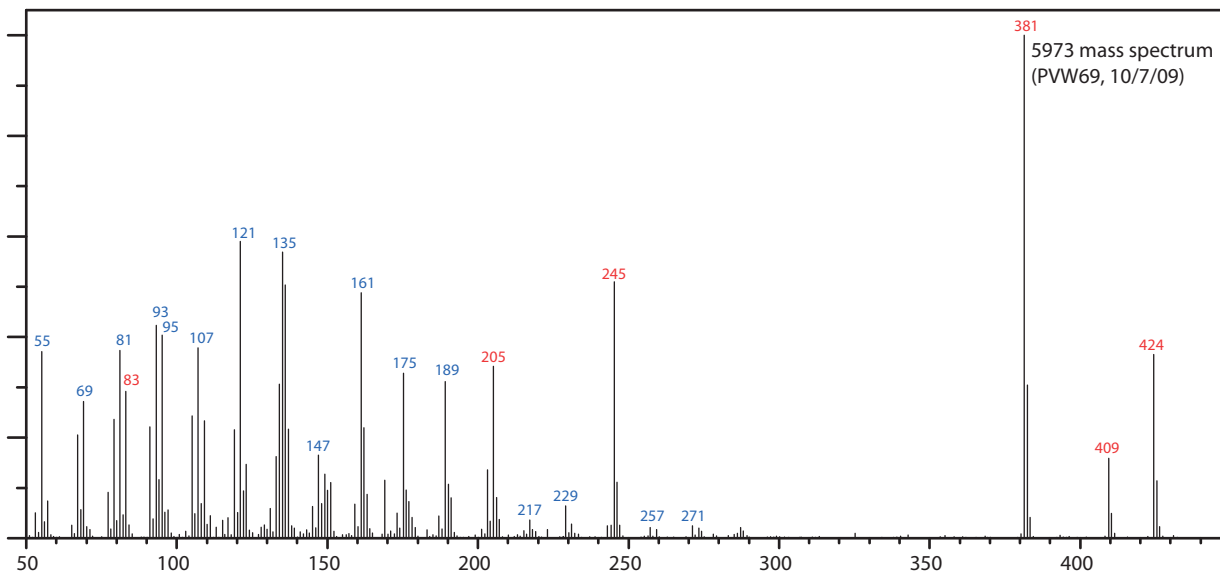
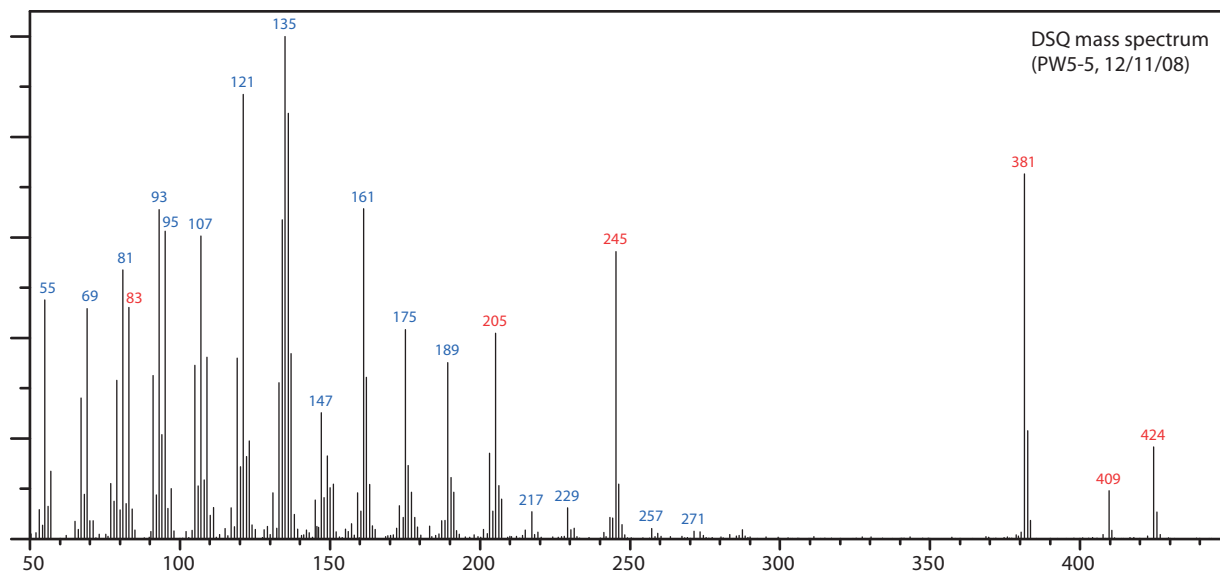
$C_{30}H_{50}$   
Mol. Weight: 410.7180  
Exact Mass: 410.3913  
Retention Index (XLB): 3133.9  
Source: *R. palustris* TIE-1



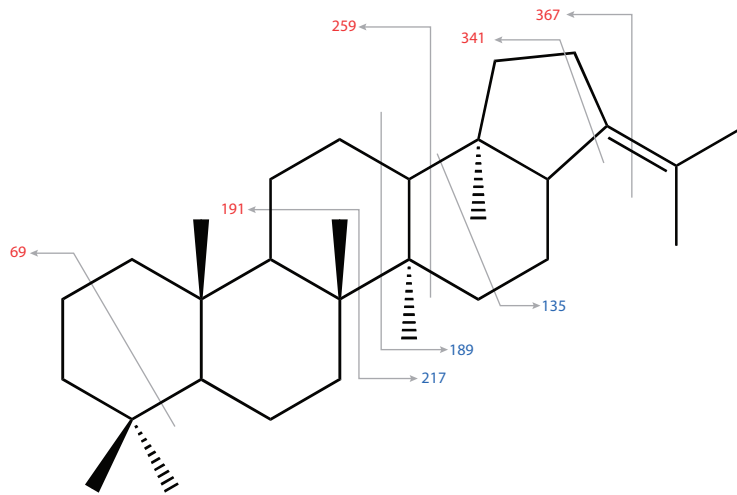
# 2-Methylhop-17(21)-ene



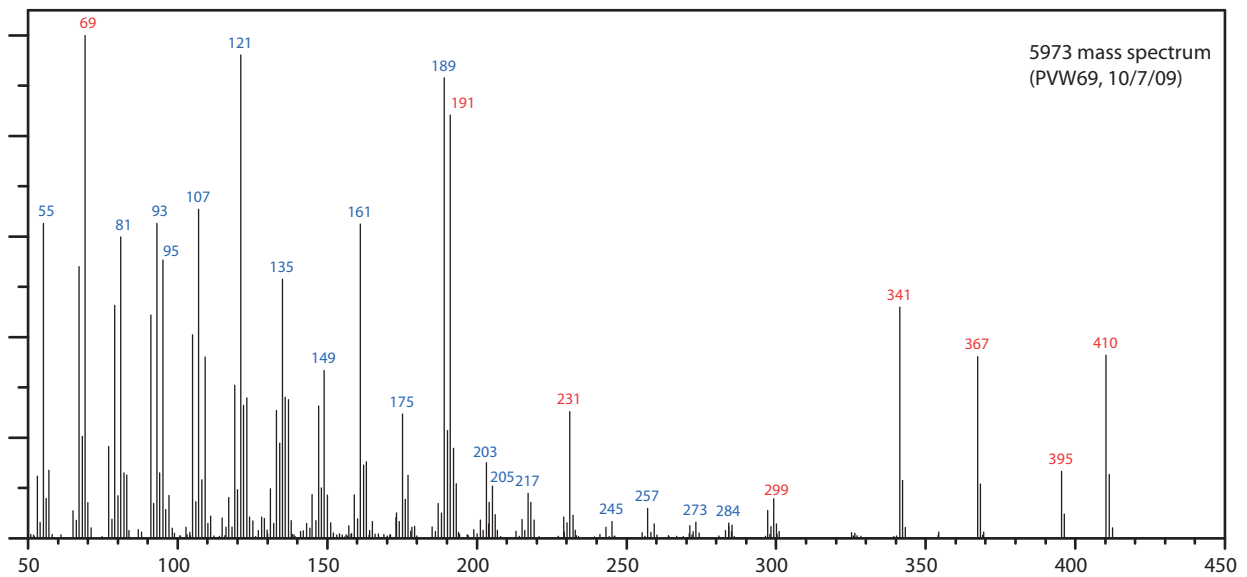
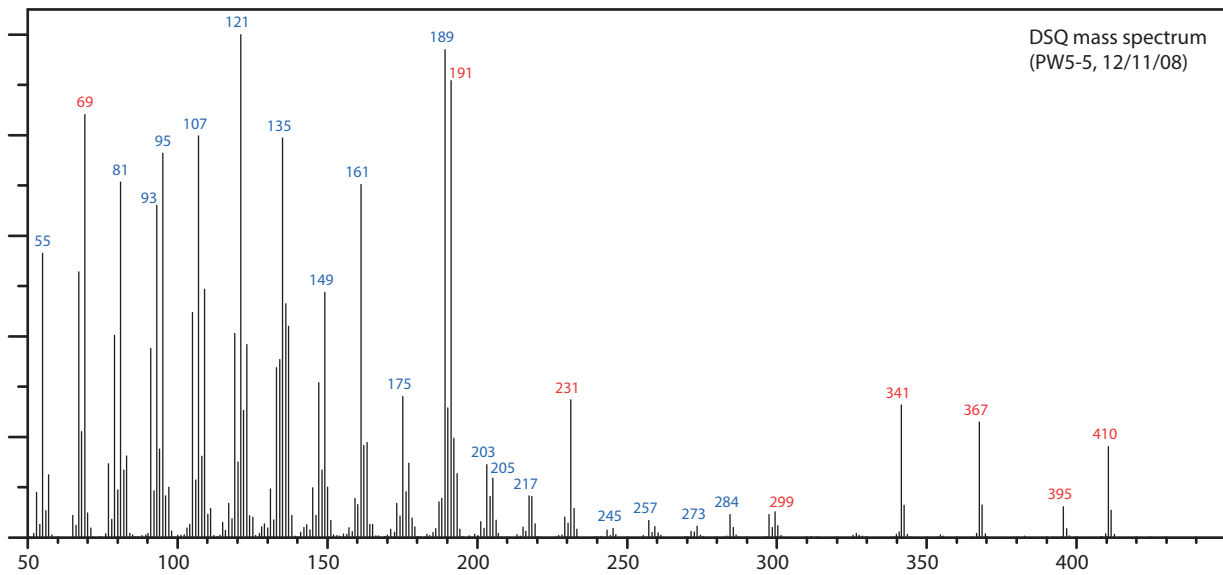
$C_{31}H_{52}$   
Exact Mass: 424.4069  
Mol. Weight: 424.7446  
Retention Index: 3123.5  
Source: *R. palustris* TIE-1



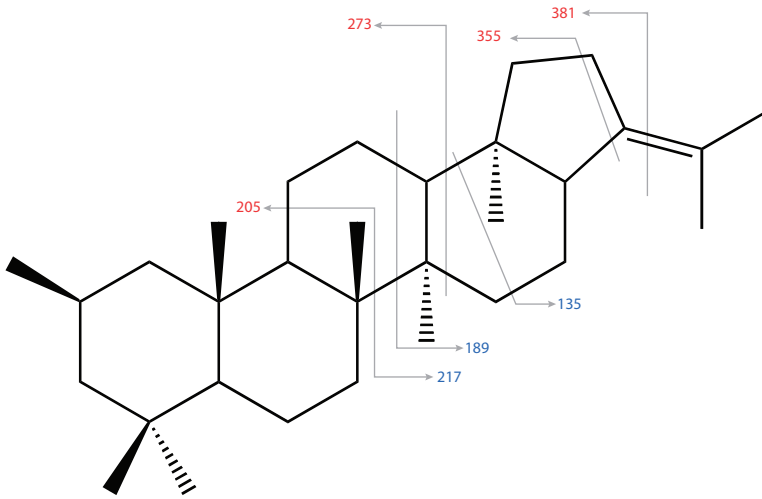
# Hop-21-ene



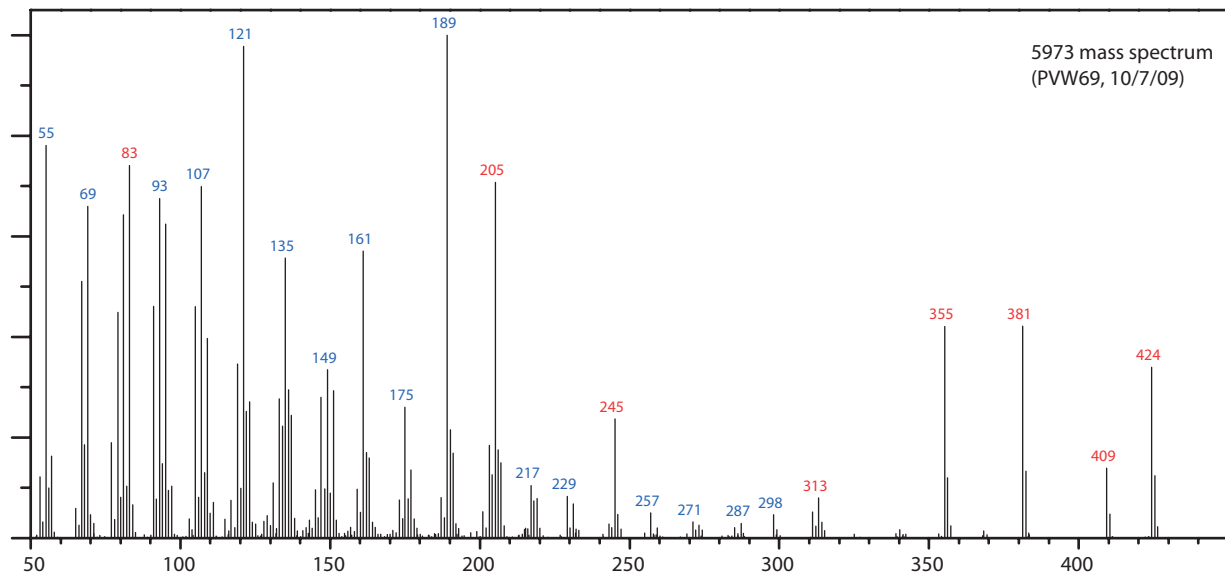
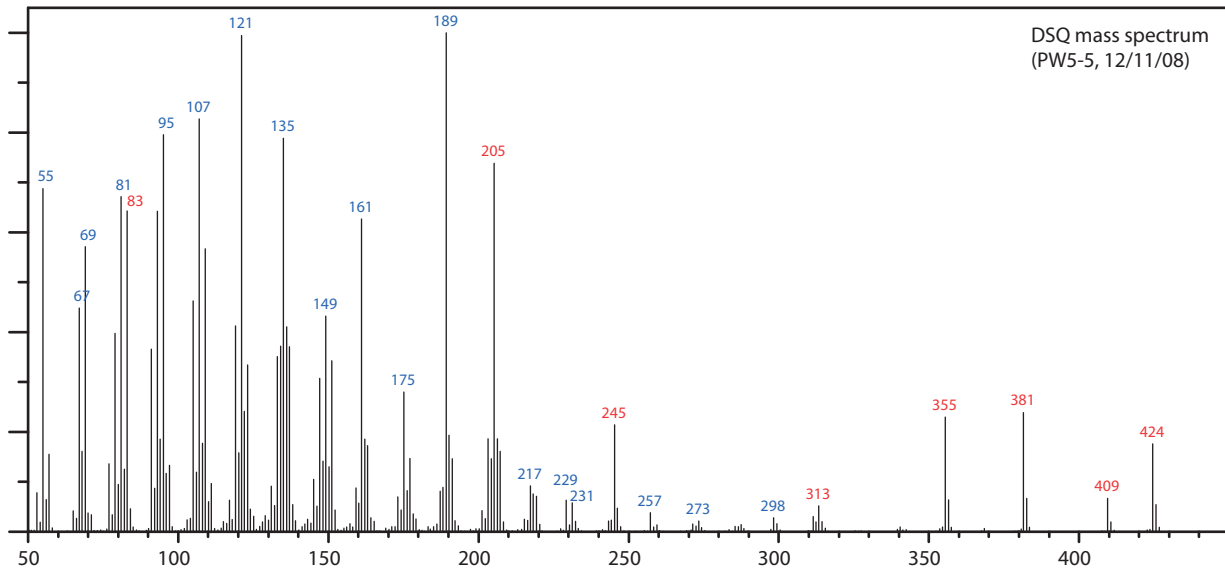
$C_{30}H_{50}$   
Mol. Weight: 410.7180  
Exact Mass: 410.3913  
Retention Index (XLB): 3378.7  
Source: *R. palustris* TIE-1



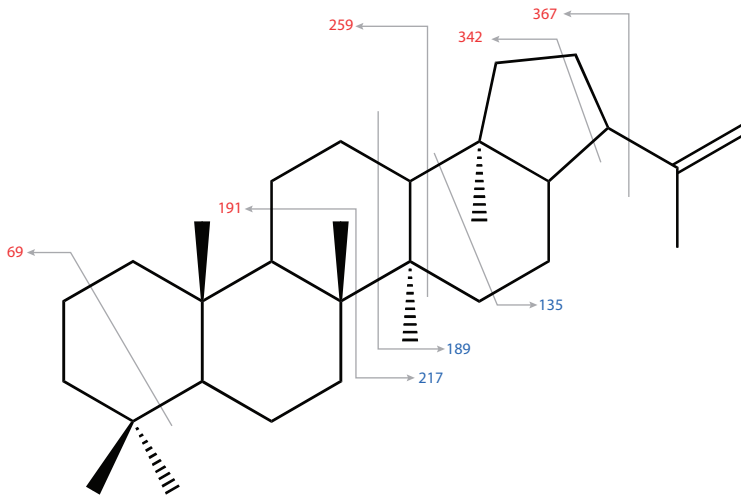
# 2-Methylhop-21-ene



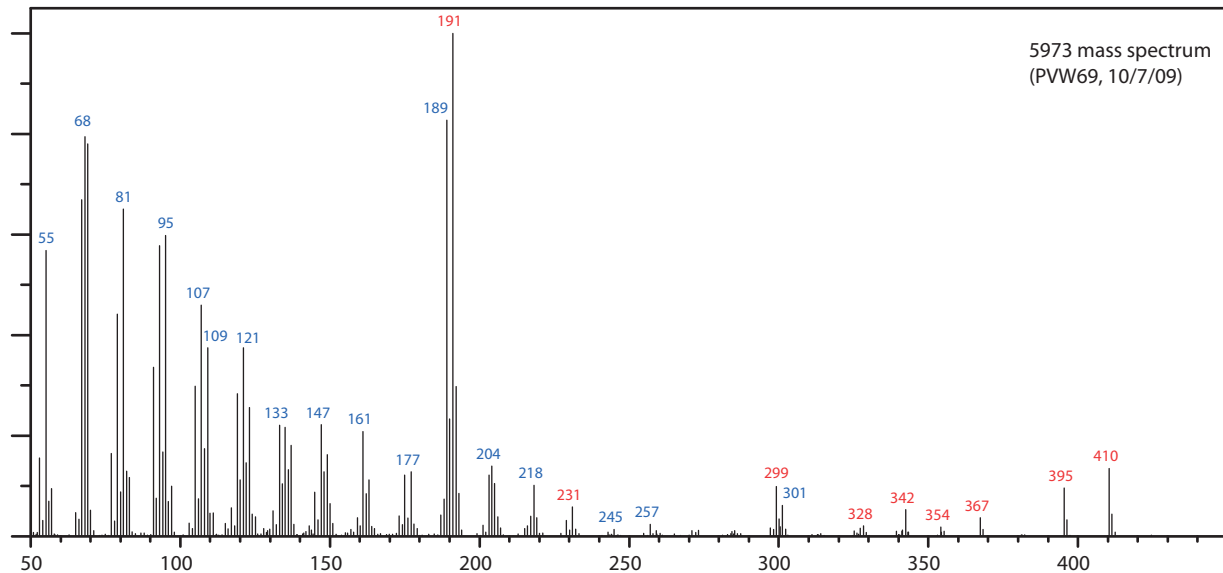
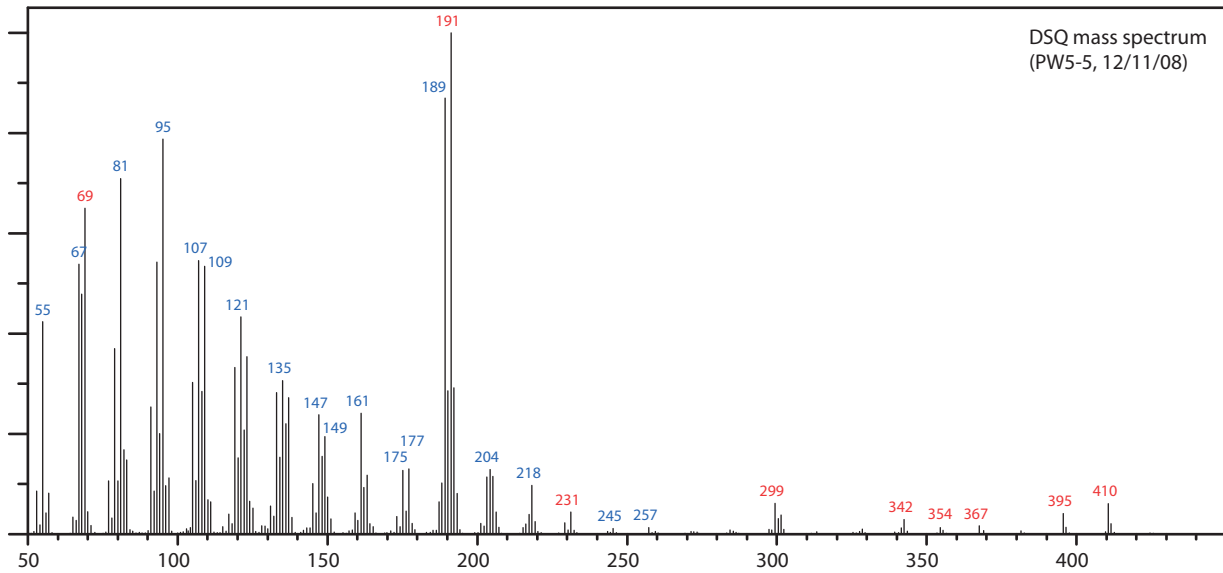
$C_{31}H_{52}$   
Exact Mass: 424.4069  
Mol. Weight: 424.7446  
Retention Index (XLB): 3366.9  
Source: *R. palustris* TIE-1



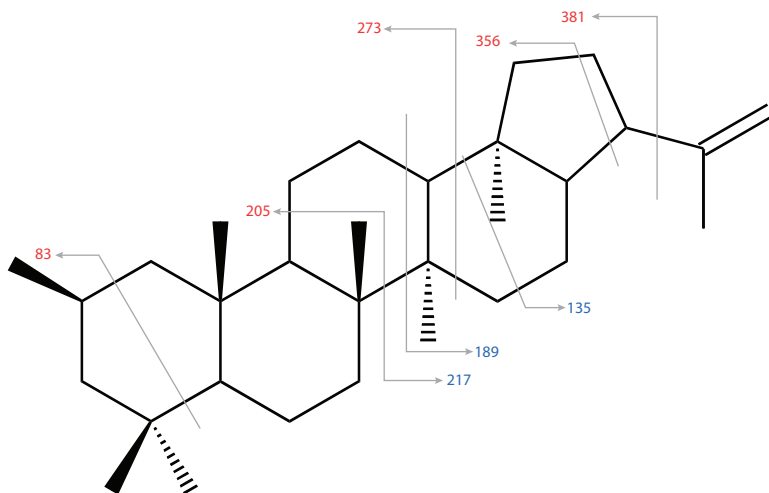
# Hop-22(29)-ene



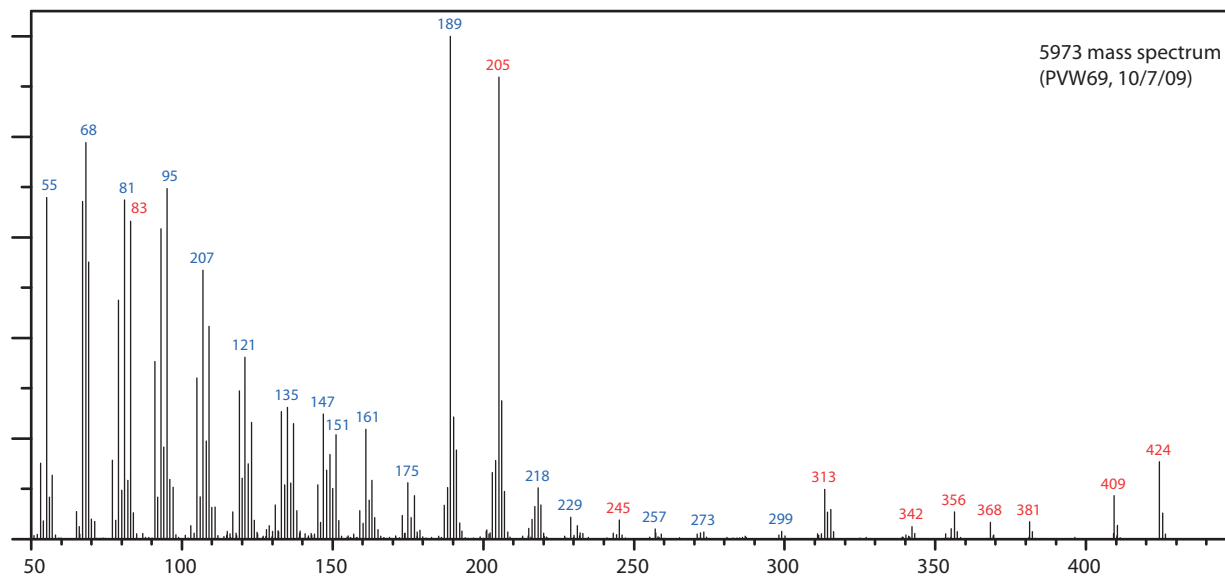
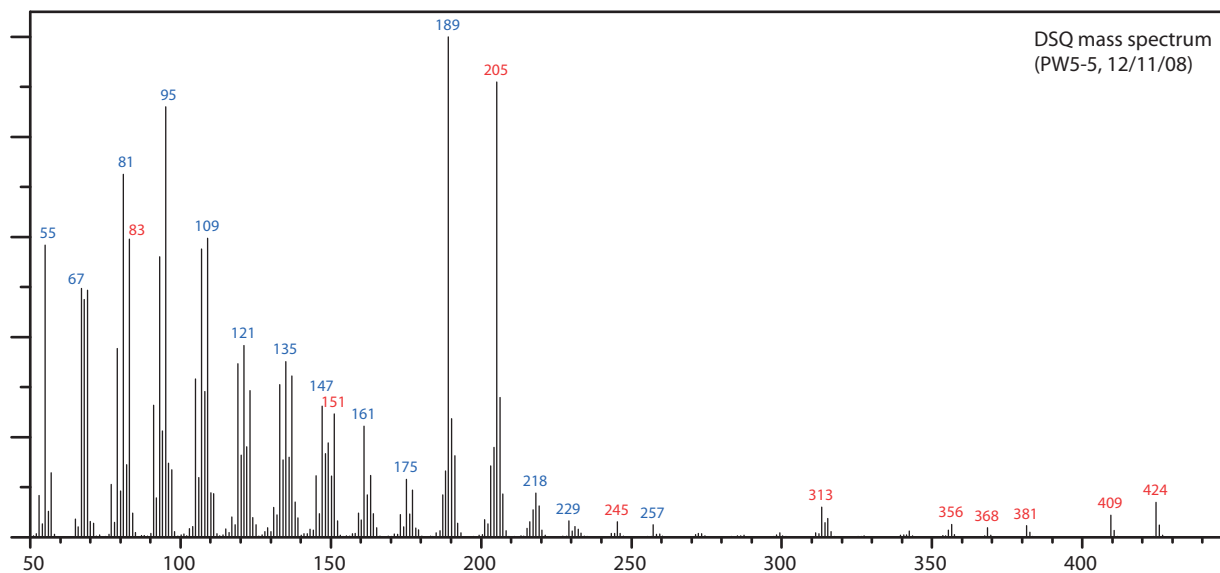
$C_{30}H_{50}$   
Mol. Weight: 410.7180  
Exact Mass: 410.3913  
Retention Index: 3374.8  
Source: *R. palustris* TIE-1



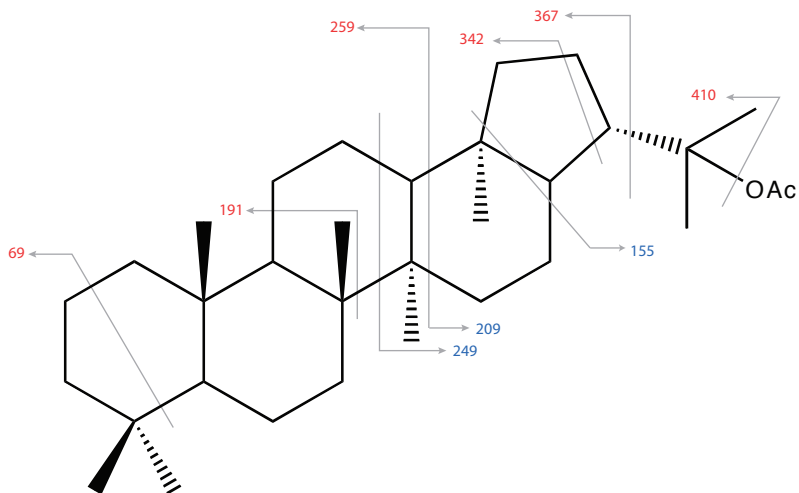
# 2-Methylhop-22(29)-ene



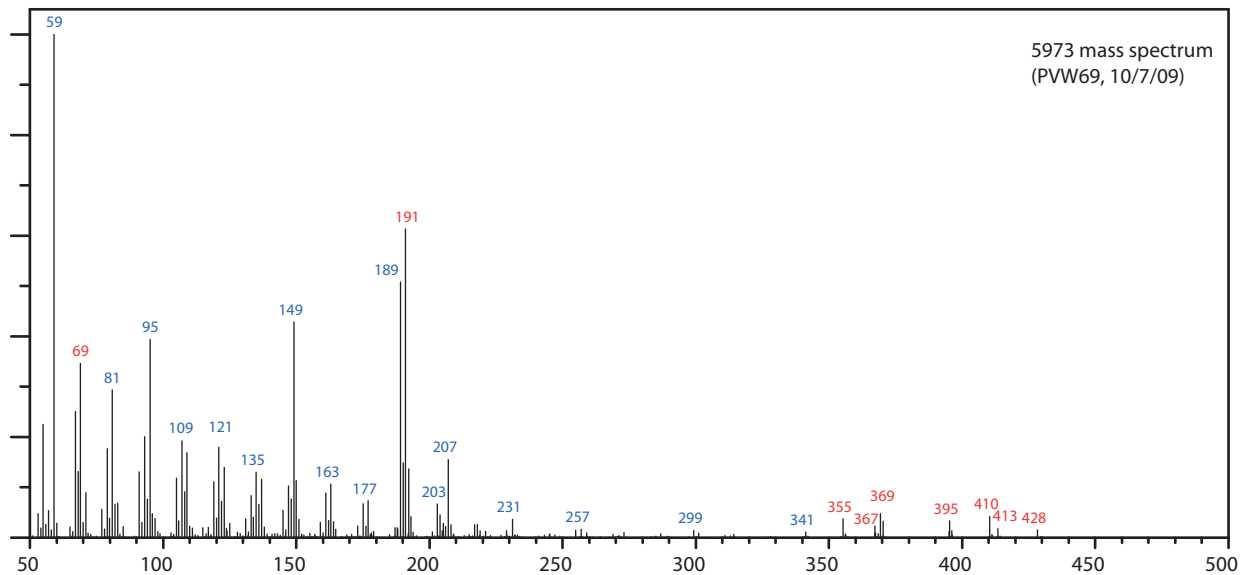
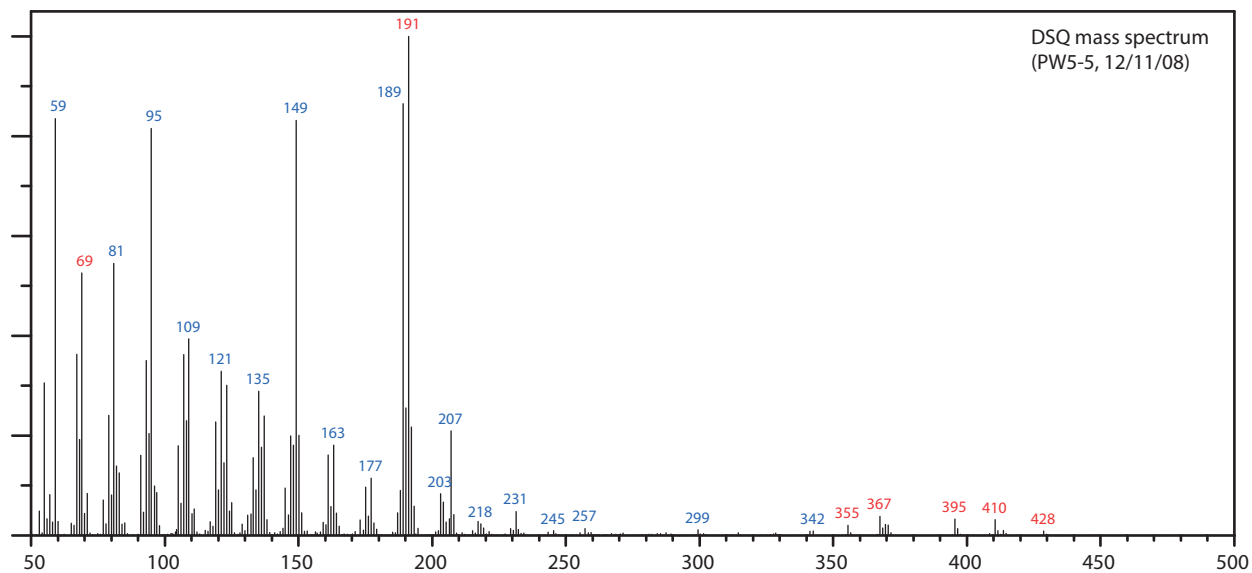
$C_{31}H_{52}$   
Exact Mass: 424.4069  
Mol. Weight: 424.7446  
Retention Index (XLB): 3360.6  
Source: *R. palustris* TIE-1



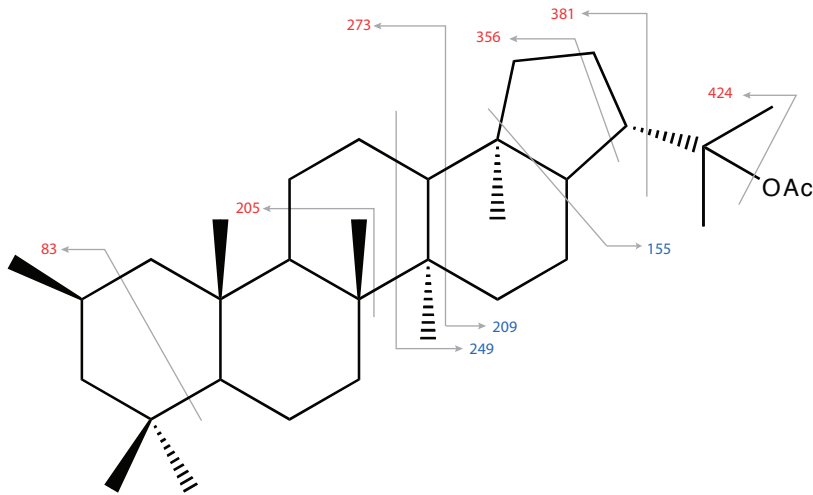
# Diplopterol acetate



$C_{32}H_{54}O_2$   
Mol. Weight: 470.7700  
Exact Mass: 470.4124  
Retention Index (XLB): 3584.0  
Source: *R. palustris* TIE-1



# 2-Methyldiplopterol acetate



$C_{32}H_{54}O_2$   
Mol. Weight: 484.7965  
Exact Mass: 484.4280  
Retention Index (XLB): 3566.4  
Source: *R. palustris* TIE-1

