

Electronic Appendix: Figures EA1 to EA5
X-ray maps for Cl and P for the chondrites studied,
showing the distribution of merrillite and chlorapatite.

Figure EA1: Bo Xian UNM 265, map A

Figure EA2: Bo Xian UNM 265, map B

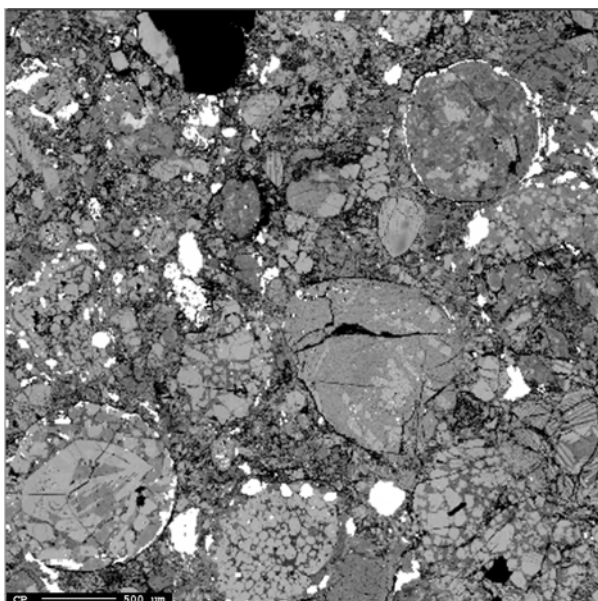
Figure EA3: Bjurböle UNM 117

Figure EA4: Tuxtuac, UNM 627

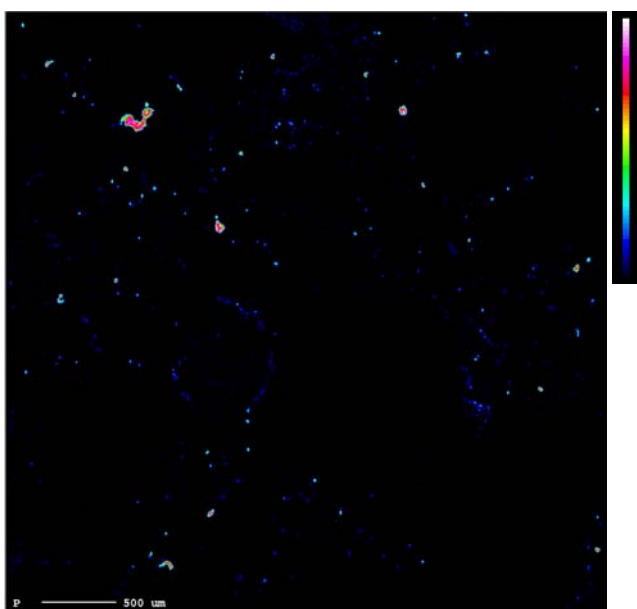
Figure EA5: St. Séverin, UNM 693

Figure EA1: Bo Xian UNM 265, map A

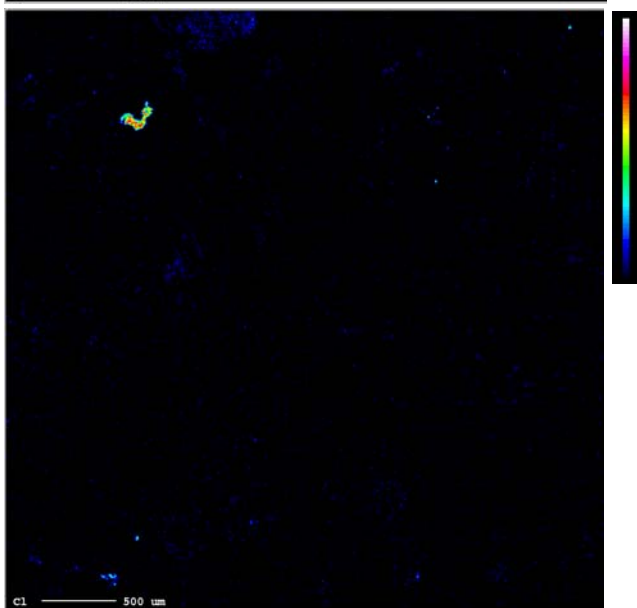
4 x 4 mm



BSE



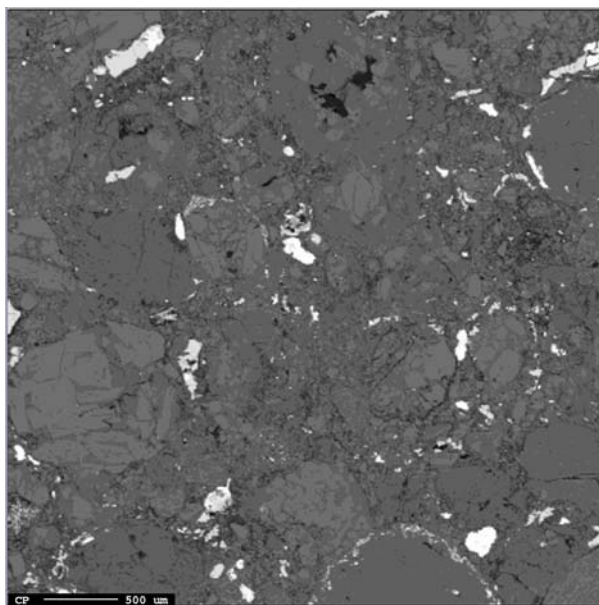
P K α



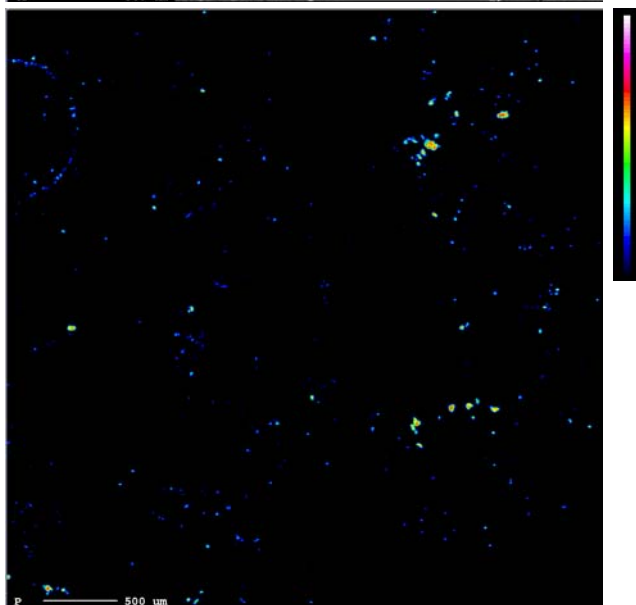
Cl K α

Figure EA2: Bo Xian UNM 265, map B

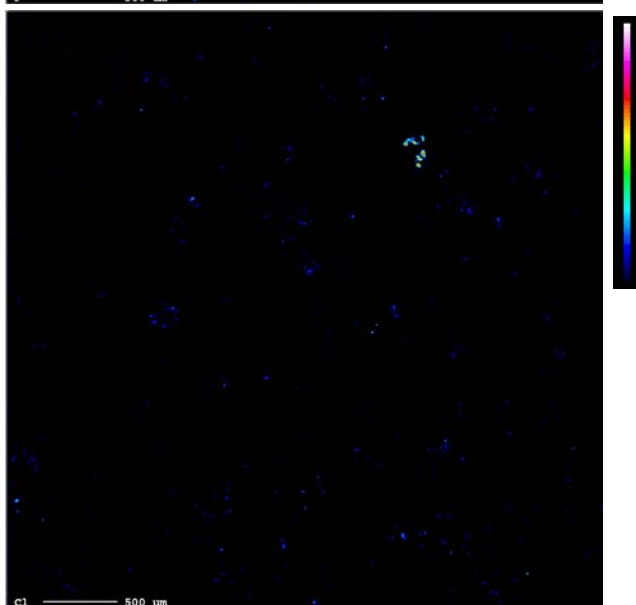
4 x 4 mm



BSE



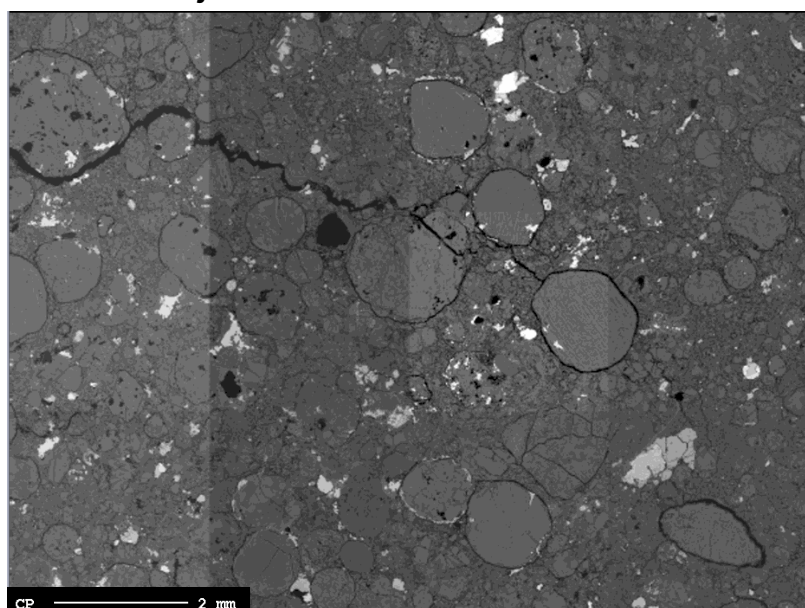
P K α



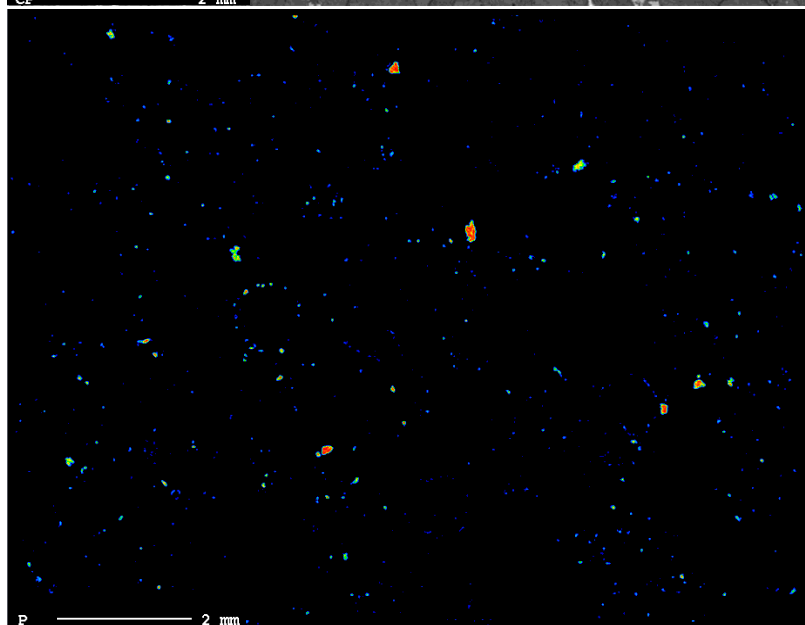
Cl K α

Figure EA3: Bjurböle UNM 117

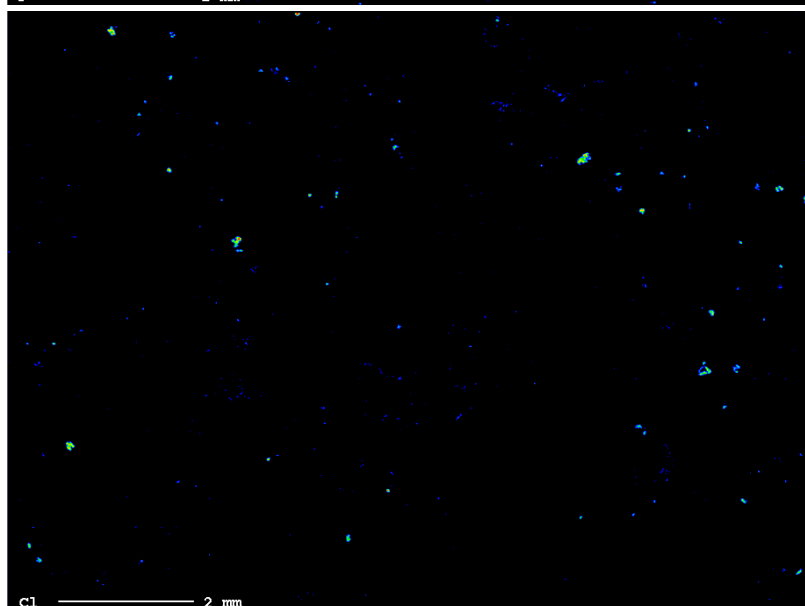
12 x 9 mm



BSE



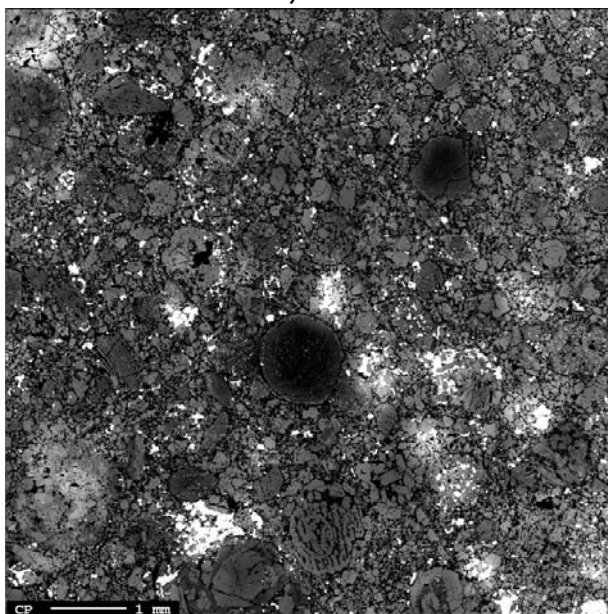
P K α



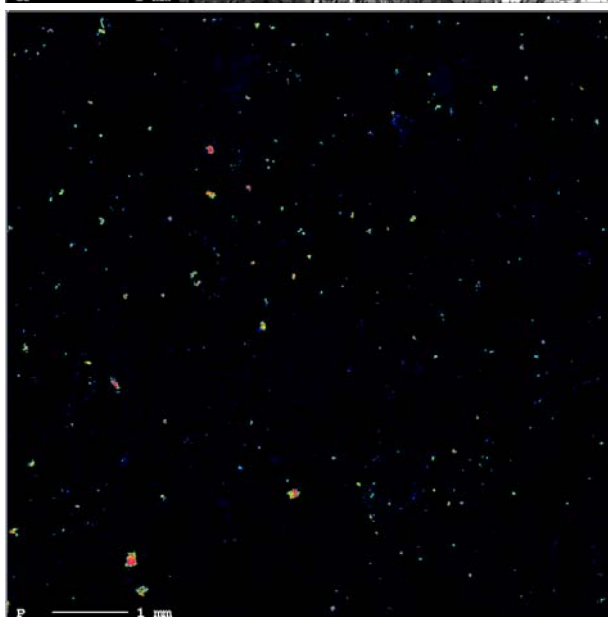
Cl K α

Figure EA4: Tuxtuac, UNM 627

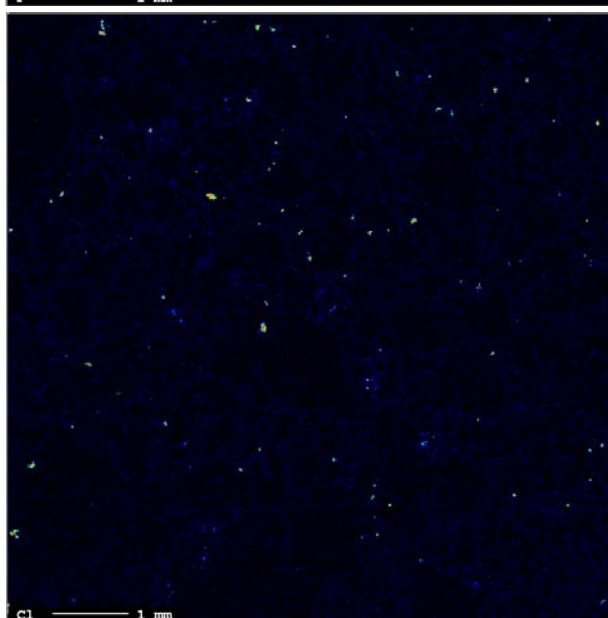
8 x 8 mm



BSE



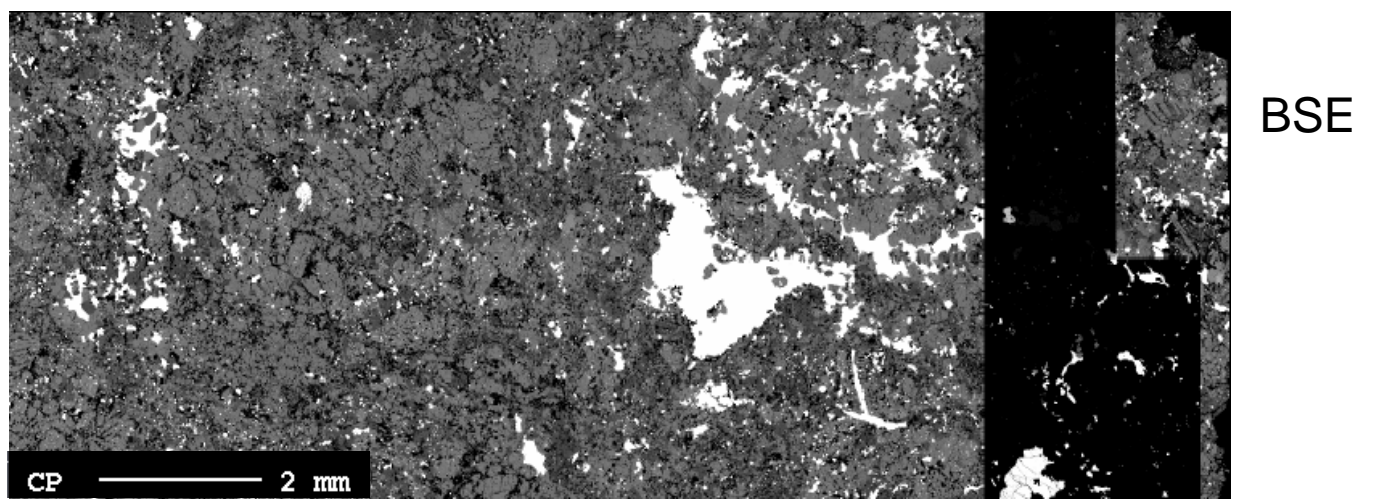
P K α



Cl K α

Figure EA5: St. Séverin, UNM 693

7.5 x 3 mm



Note: A portion of the BSE image was not collected. This did not affect X-ray acquisition for P and Cl

