

THREE GRAVITATIONALLY LENSED SUPERNOVAE BEHIND CLASH GALAXY CLUSTERS

BRANDON PATEL¹, CURTIS MCCULLY¹, SAURABH W. JHA¹, STEVEN A. RODNEY^{2,†}, DAVID O. JONES², OR GRAUR^{2,3,4,5}, JULIAN MERTEN⁶, ADI ZITRIN^{7,†}, ADAM G. RIESS^{2,8}, THOMAS MATHESON⁹, MASAO SAKO¹⁰, THOMAS W.-S. HOLOIEN¹, MARC POSTMAN⁸, DAN COE⁸, MATTHIAS BARTELMANN¹¹, ITALO BALESTRA^{12,13}, NARCISO BENÍTEZ¹⁴, RYCHARD BOUWENS¹⁵, LARRY BRADLEY⁸, TOM BROADHURST¹⁶, S. BRADLEY CENKO^{17,18}, MEGAN DONAHUE¹⁹, ALEXEI V. FILIPPENKO¹⁸, HOLLAND FORD², PETER GARNAVICH²⁰, CLAUDIO GRILLO²¹, LEOPOLDO INFANTE²², STÉPHANIE JOUVEL²³, DANIEL KELSON²⁴, ANTON KOEKEMOER⁸, OFER LAHAV²⁵, DORON LEMZE², DAN MAOZ³, ELINOR MEDEZINSKI², PETER MELCHIOR²⁶, MASSIMO MENEGHETTI²⁷, ALBERTO MOLINO¹⁴, JOHN MOUSTAKAS²⁸, LEONIDAS A. MOUSTAKAS⁶, MARIO NONINO^{1,2}, PIERO ROSATI^{29,30}, STELLA SEITZ³¹, LOUIS G. STROLGER⁸, KEIICHI UMETSU³², AND WEI ZHENG²

ACCEPTED TO APJ: March 7, 2014

ABSTRACT

We report observations of three gravitationally lensed supernovae (SNe) in the Cluster Lensing And Supernova survey with Hubble (CLASH) Multi-Cycle Treasury program. These objects, SN CLO12Car ($z = 1.28$), SN CLN12Did ($z = 0.85$), and SN CLA11Tib ($z = 1.14$), are located behind three different clusters, MACSJ1720.2+3536 ($z = 0.391$), RXJ1532.9+3021 ($z = 0.345$), and Abell 383 ($z = 0.187$), respectively. Each SN was detected in *Hubble Space Telescope* (HST) optical and infrared images. Based on photometric classification, we find that SNe CLO12Car and CLN12Did are likely to be Type Ia supernovae (SNe Ia), while the classification of SN CLA11Tib is inconclusive. Using multi-color light-curve fits to determine a standardized SN Ia luminosity distance, we infer that SN CLO12Car was $\sim 1.0 \pm 0.2$ mag brighter than field SNe Ia at a similar redshift and ascribe this to gravitational lens magnification. Similarly, SN CLN12Did is $\sim 0.2 \pm 0.2$ mag brighter than field SNe Ia. We derive independent estimates of the predicted magnification from CLASH strong+weak lensing maps of the clusters (in magnitude units, $2.5 \log_{10} \mu$): 0.83 ± 0.16 mag for SN CLO12Car, 0.28 ± 0.08 mag for SN CLN12Did, and 0.43 ± 0.11 mag for SN CLA11Tib. The two SNe Ia provide a new test of the cluster lens model predictions: we find that the magnifications based on the SN Ia brightness and those predicted by the lens maps are consistent. Our results herald the promise of future observations of samples of cluster-lensed SNe Ia (from the ground or space) to help illuminate the dark-matter distribution in clusters of galaxies, through the direct determination of absolute magnifications.

Subject headings: cosmology: observations – galaxies: clusters: general – gravitational lensing: weak – supernovae: general

¹ Department of Physics and Astronomy, Rutgers, The State University of New Jersey, Piscataway, NJ 08854, USA

² Department of Physics and Astronomy, The Johns Hopkins University, Baltimore, MD 21218, USA

³ School of Physics and Astronomy, Tel Aviv University, Tel Aviv 69978, Israel

⁴ Department of Astrophysics, American Museum of Natural History, New York, NY 10024, USA

⁵ 4 CCPP, New York University, 4 Washington Place, New York, NY 10003, USA

⁶ Jet Propulsion Laboratory, California Institute of Technology, MS 169-327, Pasadena, CA 91109, USA

⁷ Cahill Center for Astronomy and Astrophysics, California Institute of Technology, MS 249-17, Pasadena, CA 91125, USA

⁸ Space Telescope Science Institute, 3700 San Martin Drive, Baltimore, MD 21208, USA

⁹ National Optical Astronomy Observatory, 950 North Cherry Avenue, Tucson, AZ 85719, USA

¹⁰ Department of Physics and Astronomy, University of Pennsylvania, Philadelphia, PA 19104, USA

¹¹ Institut für Theoretische Astrophysik, Universität Heidelberg, Zentrum für Astronomie, Philosophenweg 12, D-69120 Heidelberg, Germany

¹² INAF-Osservatorio Astronomico di Trieste, via G. B. Tiepolo 11, 34131 Trieste, Italy

¹³ INAF-Osservatorio Astronomico di Capodimonte, via Moiriello 16, 80131 Napoli, Italy

¹⁴ Instituto de Astrofísica de Andalucía (CSIC), Camino Bajo de Huétor 24, Granada 18008, Spain

¹⁵ Leiden Observatory, Leiden University, NL-2300 RA Leiden, Netherlands

¹⁶ Department of Theoretical Physics, University of the Basque Country, P. O. Box 644, 48080 Bilbao, Spain

¹⁷ Astrophysics Science Division, NASA/GSFC, Mail Code 661, Greenbelt, MD 20771, USA

¹⁸ Department of Astronomy, University of California, Berkeley, CA

94720-3411, USA

¹⁹ Department of Physics and Astronomy, Michigan State University, East Lansing, MI 48824, USA

²⁰ Department of Physics, University of Notre Dame, Notre Dame, IN 46556, USA

²¹ Dark Cosmology Centre, Niels Bohr Institute, University of Copenhagen, Juliane Mariesvej 30, DK-2100 Copenhagen, Denmark

²² Institute of Astrophysics, Pontificia Universidad Católica de Chile, Av. Vic. Mackenna 4860, Santiago, Chile

²³ Institut de Ciències de l'Espai (IEEC-CSIC), E-08193 Bellaterra (Barcelona), Spain

²⁴ Observatories of the Carnegie Institution of Washington, Pasadena, CA 91101, USA

²⁵ Department of Physics & Astronomy, University College London, Gower Street, London WC1E 6BT, UK

²⁶ Center for Cosmology and Astro-Particle Physics, & Department of Physics; The Ohio State University, 191 W. Woodruff Ave., Columbus, Ohio 43210, USA

²⁷ INAF-Osservatorio Astronomico di Bologna, & INFN, Sezione di Bologna, Via Ranzani 1, I-40127 Bologna, Italy

²⁸ Department of Physics and Astronomy, Siena College, 515 Loudon Road, Loudonville, NY 12211, USA

²⁹ Dipartimento di Fisica e Scienze della Terra, Università di Ferrara, Via Saragat 1, I-44122 Ferrara, Italy

³⁰ ESO-European Southern Observatory, D-85748 Garching bei München, Germany

³¹ Universitäts-Sternwarte, München, Scheinerstr. 1, D-81679 München, Germany

³² Institute of Astronomy and Astrophysics, Academia Sinica, P. O. Box 23-141, Taipei 10617, Taiwan

[†] Hubble Fellow

1. INTRODUCTION

Supernovae have proven to be important tools for studying the Universe. Type Ia supernovae (SNe Ia) have been instrumental in the discovery that the expansion of the Universe is accelerating, and probing the dark energy driving the acceleration (e.g., Riess et al. 1998; Perlmutter et al. 1999; Wood-Vasey et al. 2007; Kessler et al. 2009a; Hicken et al. 2009; Sullivan et al. 2011; Suzuki et al. 2012, and references therein). Core-collapse (CC) SNe trace the star-formation history of the Universe (e.g., Dahlen et al. 2004; Bazin et al. 2009; Botticella et al. 2012). Gravitational lensing of SNe can augment their cosmological utility, in both the strong and weak lensing regimes. The seminal paper of Refsdal (1964), which considered measuring galaxy masses and the Hubble parameter from lensed image time delays, in fact envisaged SNe as the background sources.³⁴ While no multiply imaged supernova (SN) has yet been discovered, several applications of lensed SNe are currently being explored.

Gravitational lensing allows massive galaxy clusters to be used as cosmic telescopes, increasing the apparent brightness of distant sources that would otherwise be too faint to detect (Sullivan et al. 2000; Kneib et al. 2004; Stanishev et al. 2009). Ground-based near-infrared (IR) surveys of galaxy clusters are being used to find lensed SNe, including a core-collapse SN with redshift $z = 1.7$ (Goobar et al. 2009; Amanullah et al. 2011, and references therein). Lensed SNe Ia are particularly useful, as their standardizable luminosities allow for a direct measurement of the absolute lensing magnification (Kolatt & Bartelmann 1998).

The Cluster Lensing And Supernova survey with Hubble (CLASH; Postman et al. 2012) has observed 25 galaxy clusters in 16 *Hubble Space Telescope* (*HST*) broadband filters covering the near-ultraviolet (UV) to the near-IR with the Advanced Camera for Surveys (ACS) and the Wide Field Camera 3 (WFC3). The WFC3 infrared channel (WFC3/IR) is especially important for finding and studying high-redshift SNe, efficiently surveying large sky areas for SNe whose peak flux has redshifted from the optical to the infrared. The SN discoveries and follow-up observations from CLASH are discussed at length by Graur et al. (2014). Here we focus on SNe *behind* CLASH clusters (in the “prime” fields centered on the clusters); these have not been included in the Graur et al. (2014) “parallel” field sample.

All distant SNe are lensed (magnified, or more often, demagnified) to some extent by large-scale structure along the line of sight. This adds a statistical “nuisance” in cosmological inferences from SNe Ia that can be corrected either assuming an overall magnification distribution (e.g., Holz & Linder 2005; Martel & Premadi 2008) or with convergence estimates along each SN light of sight using simplified scaling relations applied to the nearby foreground galaxies observed (Kronborg et al. 2010; Jönsson et al. 2010; Smith et al. 2013, and references therein).

Individual SNe that are detectably magnified have been found only rarely in recent wide-field surveys. A gravitational lens has to be precisely aligned with the background source to produce large magnifications, and this is significantly rarer for SNe compared to background galaxies as sources. Their

short-lived durations also make lensed SNe rarer than even lensed quasars (Oguri & Marshall 2010). Moreover, the survey footprints of the Supernova Legacy Survey (SNLS) and the SDSS-II Supernova Survey did not contain many massive galaxy clusters to act as lenses for background SNe (Graham et al. 2008; Dilday et al. 2010).

Kronborg et al. (2010) inferred that the most magnified SN Ia in SNLS had a magnification factor $\mu = 1.27$, corresponding to $\Delta m_\mu = 2.5 \log_{10} \mu = 0.26$ mag, calculated from the location and photometry of foreground galaxies along the line of sight. Jönsson et al. (2010) came to a similar conclusion, finding that the SNLS sample did not probe SNe Ia with $\Delta m_\mu \gtrsim 0.25$ mag (however, see Karpenka et al. 2013, who find little to no lensing of the SNLS sample). Given the typical ~ 0.2 mag scatter in standardized SN Ia luminosities, a lensing signal at this level cannot be clearly ascertained for an individual object, although it can be detected statistically for a larger sample.

Lensing magnification by foreground galaxies is expected to play a larger role for more distant SNe. The Hubble Deep Field SN Ia 1997ff at $z \approx 1.7$ (Gilliland et al. 1999; Riess et al. 2001) is calculated to have a $\Delta m_\mu = 0.34 \pm 0.12$ mag from lens galaxies projected nearby (Benítez et al. 2002). The uncertainties in the SN light curve and cosmological model preclude a definitive detection of the expected magnification signal. Rather, in this case the estimated lensing magnification has been applied as a correction to the inferred SN luminosity distance to constrain cosmological parameters, though care should be taken that this is done self-consistently (Zitrin et al. 2013).

Supernova properties were used by Quimby et al. (2013) to posit that the recent SN PS1-10afx at $z = 1.39$ was a SN Ia magnified by a factor of 30 ($\Delta m_\mu = 3.72 \pm 0.18$ mag)! However, there is no lens observed in this system, and the authors conclude that it must be dark. Chornock et al. (2013) offer an alternate model, that this SN is best explained as a superluminous core-collapse object, without significant magnification.

Ideally, we would like to confirm the detection of gravitational lensing magnification of a SN by independently checking the magnifications derived from the SN brightness and a lens-model prediction for consistency. In this paper, we discuss three gravitationally lensed SNe (SN CLO12Car, SN CLN12Did, and SN CLA11Tib) behind CLASH clusters. We present photometric observations of the SNe and spectroscopy of their host galaxies in §2. In §3 we discuss classification of the SNe and model light-curve fits. The gravitational magnifications from lens models are derived in §4, and we confront the models against the observations and discuss the results in §5. The following cosmological parameters are adopted throughout the paper (Sullivan et al. 2011): $H_0 = 71.6 \text{ km s}^{-1} \text{ Mpc}^{-1}$, $\Omega_M = 0.27$, $\Omega_\Lambda = 0.73$, and $\Omega_k = 0$.

2. OBSERVATIONS

2.1. SN CLO12Car

SN CLO12Car was discovered in the CLASH images of MACSJ1720.2+3536 (Ebeling et al. 2010). The SN was detected in June 2012 with both ACS and WFC3/IR. Figure 1 shows the location of the SN ($\alpha = 17^{\text{h}}20^{\text{m}}21.03^{\text{s}}$, $\delta = +35^{\circ}36'40''.9$, J2000), $0.35''$ from the center of its host galaxy. The host is relatively bright in the IR ($F160W = 21.50 \pm 0.01$ AB mag), but is significantly fainter in the optical images ($F606W = 24.21 \pm 0.06$ AB mag).

We present aperture photometry for SN CLO12Car in Ta-

³⁴ Refsdal (1964) also presciently concluded with the idea that in addition to lensed SNe, “star-like objects with intense emission both in the radio range and optical range” that “have been recently discovered” may also be valuable lensed sources, “giving a possibility of testing the different [cosmological] models.”

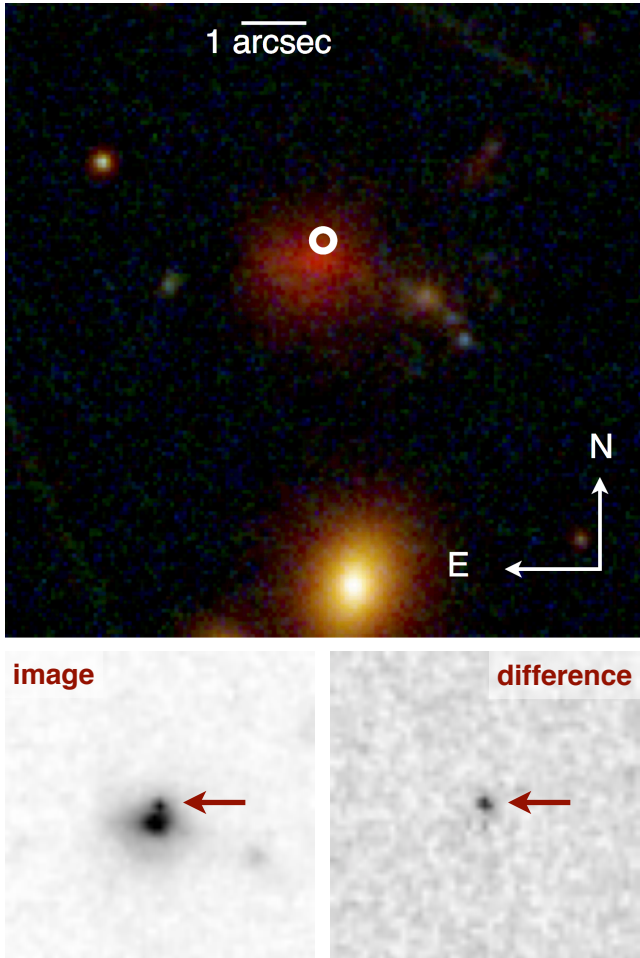


FIG. 1.— *Top*: CLASH *HST* composite false-color image of SN CLO12Car. In this image, the red channel is an average of the WFC3/IR F105W, F110W, F125W, F140W, and F160W data. The green channel combines ACS F606W, F625W, F775W, F814W, and F850LP observations, and the blue channel is from ACS F435W and F475W data. The location of the SN is marked with a white circle. *Bottom*: The left panel shows a 5'' square cutout of the WFC3/IR F160W image from 2012 June 17, with SN CLO12Car marked by the arrow; the right panel shows the difference image after template subtraction.

ble 1. These data include publicly available follow-up observations collected in July 2012 by *HST* program GO-12360 (PI S. Perlmutter). The flux from SN CLO12Car was measured in difference images, using templates constructed with CLASH observations from March and April 2012, more than 30 days before the first detection. For the ACS images, we used a fixed 4-pixel ($0''.20$) radius aperture, whereas for WFC3/IR, the photometry was measured in a 3-pixel radius ($0''.27$) aperture.

We used the DEep Imaging Multi-Object Spectrograph (DEIMOS; Faber et al. 2003) on the Keck-II 10 m telescope to obtain a ~ 2 hr spectrum of the host galaxy of SN CLO12Car (2×1800 s, 1×1700 s, and 1×1500 s), with $\sim 4 \text{ \AA}$ resolution, covering the wavelength range 5000–9000 \AA . The spectrum showed evidence of a weak emission line located between two night-sky lines near 8506 \AA . For confirmation, we obtained a 2.5 hr (5×1800 s) Gemini North Multi-Object Spectrograph (GMOS; Hook et al. 2004) nod-and-shuffle spectrum of the host, spanning 7460–9570 \AA with a resolution of $\sim 2.1 \text{ \AA}$. The GMOS spectrum also shows evidence for

the faint line (marginally resolved as a doublet), which we identify as [O II] $\lambda\lambda 3726, 3728$ emission at $z = 1.281 \pm 0.001$. A composite of the DEIMOS and GMOS spectra is shown in the top panel of Figure 2. The spectroscopic redshift for the CLO12Car host galaxy lies near the peak of its photometric redshift (photo- z) probability density function (PDF), but the photo- z PDF is broad, only limiting the redshift to $0.9 \lesssim z \lesssim 1.9$. A full description of the CLASH photo- z estimation methods is given by Jouvel et al. (2013) and Molino et al. (in prep.). At $z = 1.281$, a separation of $0.35''$ from SN to host-galaxy center corresponds to a projected physical separation of ~ 3 kpc (modulo lensing magnification).

We also analyzed the follow-up *HST* WFC3/IR G102 and G141 grism (Dressel 2012) data for SN CLO12Car and its host galaxy (taken while the SN was still visible; program GO-12360, PI S. Perlmutter). The G102 spectrum has a dispersion of $25 \text{ \AA pixel}^{-1}$, covering 8000–11,500 \AA , while the G141 spectrum has a dispersion of $47 \text{ \AA pixel}^{-1}$, covering 11,000–17,000 \AA . The exposure time with each grating was about 1.3 hr, but this yielded only a weak signal, and we were unable to extract a clear SN spectrum. In these slitless grism observations, spectral features are effectively convolved with the spatial profile of the source, making sharp emission lines broader and less pronounced. There is an emission line in the G141 grism spectrum at 14,963 \AA , consistent with $H\alpha$ $\lambda 6563$ at $z \approx 1.28$, but this is only a marginal detection given the low resolution of the data.

2.2. SN CLN12Did

SN CLN12Did was discovered in early 2012 in CLASH ACS and WFC3/IR images of RXJ1532.9+3021 (Ebeling et al. 1998). Figure 3 shows the position of the SN (located at $\alpha = 15^{\text{h}}32^{\text{m}}59.25^{\text{s}}$, $\delta = +30^{\circ}21'42''.8$, J2000), and we present aperture photometry of the SN in Table 2. The SN was present in the first epoch of observations in each of the ACS and WFC3/IR filters, so we did not have a SN-free template for subtraction. Nonetheless, the SN is separated by $\sim 4''$ from its putative host galaxy, so we expect negligible host-galaxy contamination in the SN photometry.

Ground-based Sloan Digital Sky Survey (SDSS) DR7 images (Abazajian et al. 2009) of the CLN12Did host, along with the *HST* data, show the CLN12Did host to be an early-type, likely elliptical, galaxy. The CLASH data yield photometry for the host galaxy of $F606W = 22.69 \pm 0.03$ AB mag and $F160W = 19.434 \pm 0.003$ AB mag. We obtained a ~ 5 hr spectrum (6×2700 s and 1×2500 s) of the host galaxy using the Multi-Object Double Spectrographs (MODS; Pogge et al. 2010) on the Large Binocular Telescope (LBT), covering 6300–9000 \AA with 15–40 \AA resolution. We also used Gemini North GMOS to obtain a 4.5 hr (9×1800 s) spectrum of the galaxy, covering 5220–9420 \AA , with a resolution of $\sim 6 \text{ \AA}$. A composite spectrum from the Gemini and LBT observations is shown in the middle panel of Figure 2. We derived respective redshifts of 0.851 ± 0.001 and 0.852 ± 0.002 from these data, via cross-correlation with absorption-line templates. This redshift is consistent with the photo- z derived for the galaxy ($z_{\text{phot}} = 0.92^{+0.05}_{-0.07}$). We adopt $z = 0.851 \pm 0.001$ for SN CLN12Did. At this redshift, the $4''$ separation from SN to host-galaxy center corresponds to a projected physical separation of ~ 30 kpc (modulo lensing magnification).

2.3. SN CLA11Tib

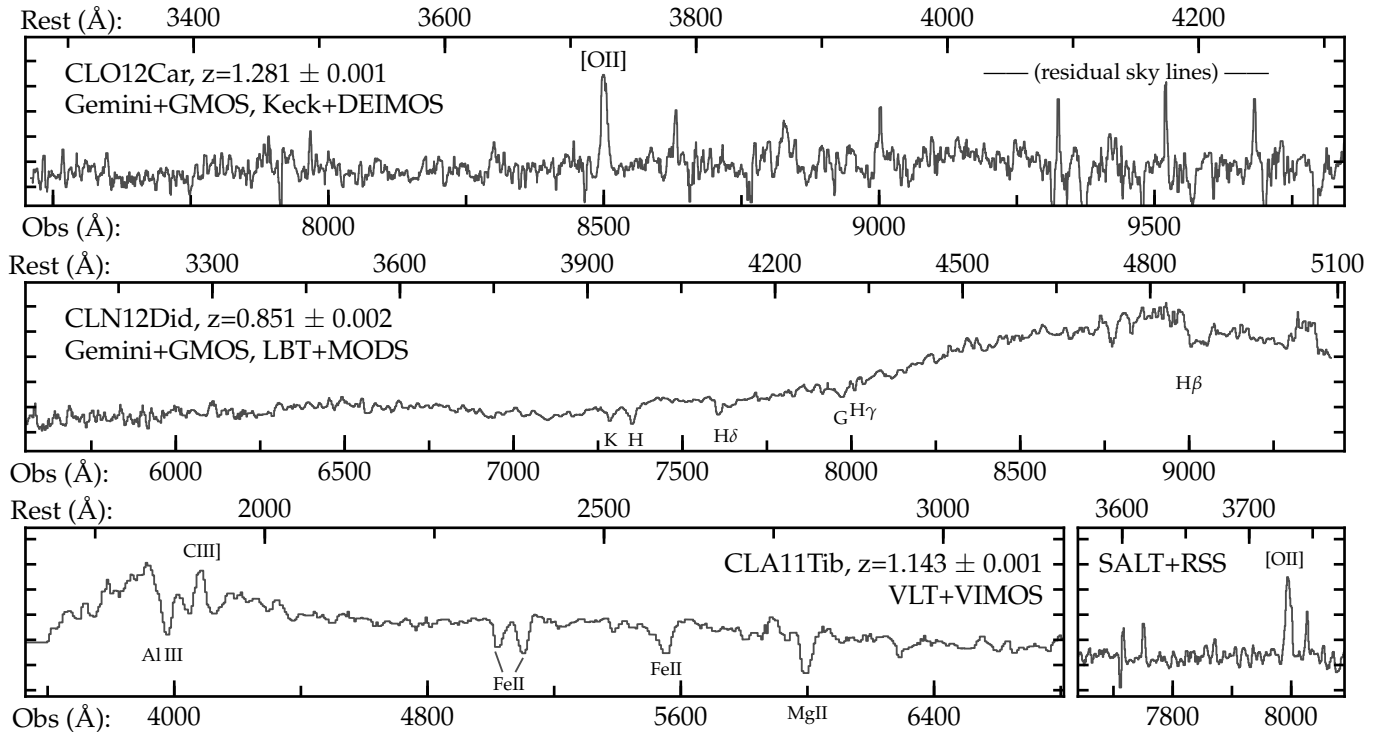


FIG. 2.— Spectra of the host galaxies of the three lensed SNe. Each panel shows observed wavelength along the bottom axis and rest wavelength on top. For display purposes, all spectra have been smoothed with a running 3-pixel median. *Top*: The host galaxy of SN CLO12Car, at $z = 1.281 \pm 0.001$. The plot shows the mean spectrum combining observations with Gemini+GMOS and Keck+DEIMOS. The single emission line at 8500 Å is identified as the [O II] $\lambda\lambda 3726, 3728$ doublet based on the photo- z and asymmetry of the line profile. *Middle*: The CLN12Did host galaxy, combining spectra from Gemini+GMOS and LBT+MODS. We derive $z = 0.851 \pm 0.002$ from cross-correlation with galaxy templates and identification of Ca and H absorption features, as indicated. *Bottom*: The left panel shows the spectrum of the SN CLA11Tib host galaxy, observed with VLT+VIMOS. We derive $z = 1.143 \pm 0.001$ from multiple absorption features and C III] $\lambda 1909$ emission. This confirms the [O II] emission-line redshift from the SALT+RSS spectrum shown on the right.

SN CLA11Tib was discovered in CLASH ACS and WFC3/IR images of Abell 383 (Abell et al. 1989) in January 2011. Figure 4 shows the SN in a color image (located at $\alpha = 02^{\text{h}}48^{\text{m}}01.27^{\text{s}}$, $\delta = -03^{\circ}33'16''.9$, J2000). Aperture photometry for the ACS observations of SN CLA11Tib is presented in Table 3. The WFC3/IR observations of the SN were taken as part of the *HST* follow-up program GO-12360 (PI S. Perlmutter). The ACS photometry is from difference images with host-galaxy subtraction, but no template images are available for the WFC3/IR observations (F105W, F125W, and F160W), so the reported IR photometry is based on the direct images. As the SN is located in a spiral arm (see Figure 4), the host galaxy could contaminate aperture photometry for these observations. For this reason we report point-spread function (PSF) fitting photometry of the SN in the WFC3/IR observations from Dolphot (a modified version of HSTphot; Dolphin 2000). Photometry of the host galaxy gives $F606W = 22.88 \pm 0.01$ AB mag and $F160W = 21.51 \pm 0.01$ AB mag.

We obtained Southern African Large Telescope (SALT) + Robert Stobie Spectrograph (RSS; Nordsieck 2012; Crawford et al. 2010) spectroscopy of the host of SN CLA11Tib with a 1200 s exposure using the PG0900 grating (range 6300–9300 Å, resolution 6 Å), and detect a strong emission line (but close to a night-sky line) that we identify as [O II] at $z = 1.144 \pm 0.001$. We confirmed this identification with the Visible MultiObject Spectrograph (VIMOS; Le Fèvre et al. 2003) on the Very Large Telescope (VLT) observations in a ~ 4 hr spectrum of the host galaxy (range 3900–6700 Å with 28 Å resolution). The spectrum shows Mg II and Fe II absorption, and C III] $\lambda 1909$ emission, all at a consistent redshift

of 1.143 ± 0.001 , which we adopt for SN CLA11Tib. This redshift is consistent with the photo- z derived for the galaxy ($z_{\text{phot}} = 1.05 \pm 0.10$). At this redshift, SN CLA11Tib is projected ~ 25 kpc from the center of its host galaxy (uncorrected for lensing magnification).

3. SN CLASSIFICATION AND LIGHT-CURVE FITS

Classification of high-redshift ($z \gtrsim 1$) SNe is challenging (e.g., Rodney et al. 2012; Rubin et al. 2013; Jones et al. 2013). For example, a typical SN Ia has a peak luminosity in the rest-frame B band of $M_B \approx -19.4$ mag. At $z = 1.5$ this becomes a Y -band apparent magnitude of ~ 25.8 . Key spectral absorption features at rest-frame optical wavelengths (such as the Si II feature observed in SN Ia at ~ 6150 Å) are redshifted into the IR, making them inaccessible to most ground-based spectrographs. With these constraints, definitive spectroscopic classification of high- z SNe requires prohibitively large investments of *HST* time (Jones et al. 2013).

For this reason, we rely on photometric classifications for these three lensed SNe. We utilize a Bayesian photometric SN classifier called STARDUST: Supernova Taxonomy And Redshift Determination Using SNANA Templates. An early version of this classifier was first introduced by Jones et al. (2013), and the complete version used for this work is presented in more detail by Graur et al. (2014) and Rodney et al. (in prep.). In brief, observations are compared against simulated SNe Ia and CC SNe, generated using version 10.27k of the SuperNova ANalysis software package³⁵ (SNANA; Kessler et al. 2009b). For SNe Ia the STARDUST classifier

³⁵ <http://sdssdp62.fnal.gov/sdssn/SNANA-PUBLIC/>

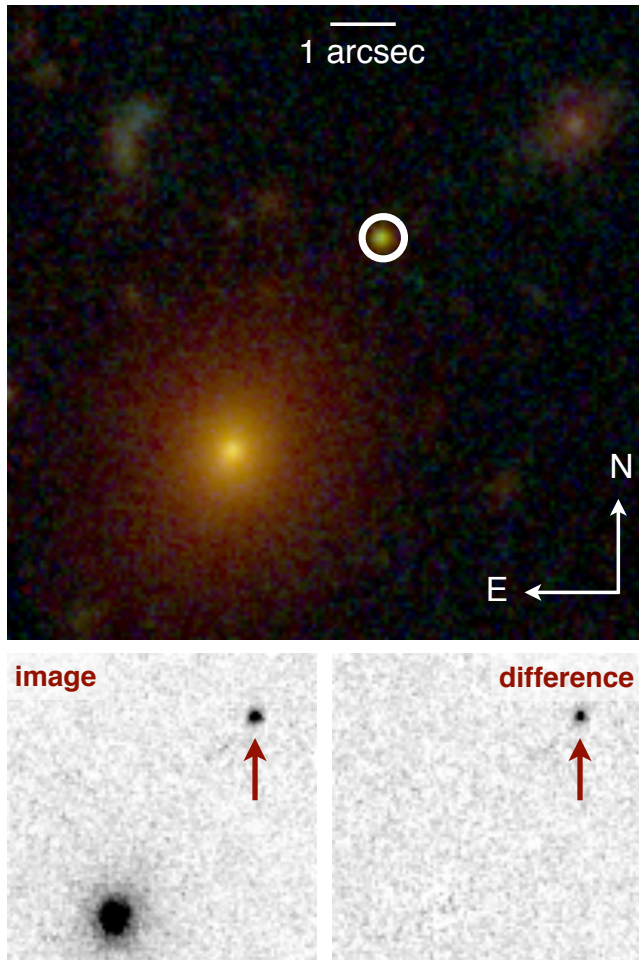


FIG. 3.— *Top*: *HST* composite false-color image of SN CLN12Did and surroundings. The red channel is an average of WFC3/IR F105W, F110W, F140W, and F160W data from the CLASH program, the green channel combines the ACS F606W, F625W, F775W, F814W, and F850LP observations, and the blue channel is from ACS F435W and F475W data. The SN position is marked with a white circle, in the outskirts of its early-type host galaxy to the southeast. *Bottom*: The left panel shows a $5''$ square cutout of the ACS F850LP image from 2012 March 3, with SN CLN12Did marked by the arrow; the right panel shows the difference image after template subtraction.

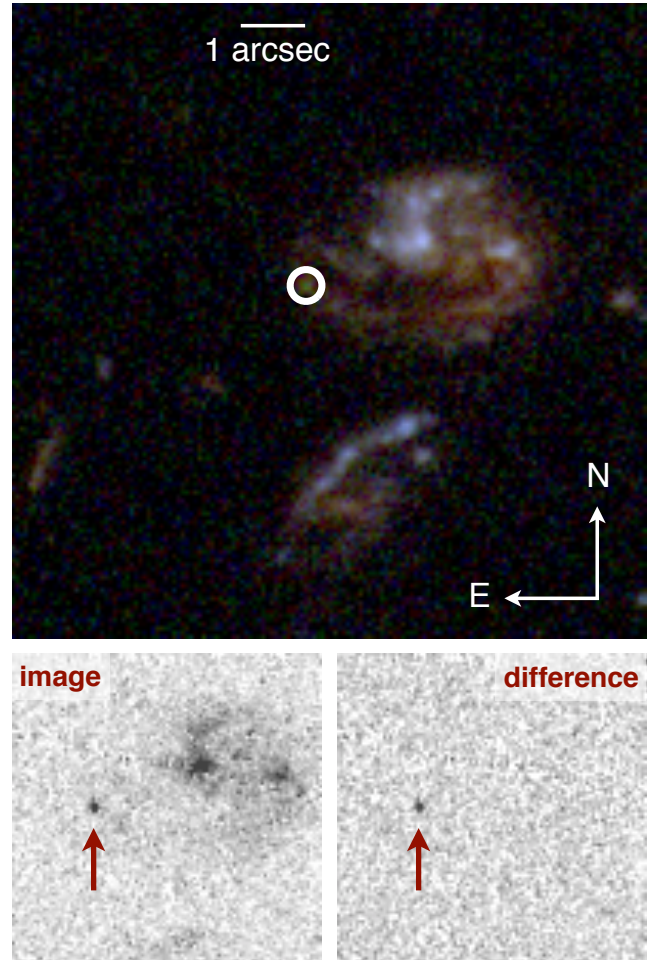


FIG. 4.— *Top*: *HST* composite false-color image of SN CLA11Tib from CLASH data. The red channel is an average of WFC3/IR F105W, F110W, F125W, F140W, and F160W data. The green channel combines ACS F606W, F625W, F775W, F814W, and F850LP observations, and the blue channel is from ACS F435W and F475W data. The location of the SN is marked with a white circle. *Bottom*: The left panel shows a $5''$ square cutout of the ACS F850LP image taken on UT 2011 Jan. 4, with SN CLA11Tib indicated by the arrow; the right panel shows the difference image after template subtraction.

uses the SALT2 light-curve model (Guy et al. 2010) extended to cover the rest-frame near-UV and IR wavelengths (see below), whereas for CC SNe, the classifier draws on the SNANA library of 16 SN Ib/c and 26 SN II templates, to be described in further detail by Sako et al. (2014). An important capability of STARDUST that we employ for this work is to allow an achromatic flux scaling factor for every model realization. This means that our STARDUST classifications rely only on the observed SN colors and light curve shape, and do not depend on the intrinsic SN luminosities or our choice of cosmological model. This is especially important for fitting lensed SNe, as it allows us to classify the SNe independent of the lensing magnification.

For additional verification of our photometric SN classifications, we turned to the Photometric SuperNova IDentification software (PSNID; Sako et al. 2008, 2011) to classify the three SNe. PSNID is similar to the STARDUST classifier, as both use SALT2 to simulate SNe Ia and rely on the same 16 SN Ib/c and 26 SN II templates to simulate CC SNe. However, PSNID has the advantage that it has been thoroughly tested, obtaining

the highest figure of merit in the SN Photometric Classification Challenge (Kessler et al. 2010), and it is already publicly available as a component of SNANA. A downside of PSNID for this work is that it uses absolute magnitude priors in its classifications, which is not ideal for analyzing lensed SNe.

For SNe Ia, we also employed a modified version of the Guy et al. (2010) SALT2 model to fit light curves and derive standardized luminosity distances. The version of SALT2 presented by Guy et al. (2010) has been robustly tested, and was used in SNLS cosmology papers (Sullivan et al. 2011; Conley et al. 2011). To accommodate the wide wavelength range of our data, we extended the SALT2 model to cover rest-frame near-UV and IR wavelengths (by default, the SALT2 fitter can only fit rest wavelengths of 2800–7000 Å). For all three SNe, this extended SALT2 model produces similar results (within 1σ) to those of the original Guy et al. (2010) model. In deriving distances, we converted our SALT2 parameters representing light-curve shape and color excess (x_1 and c) to their respective SiFTO (Conley et al. 2008) parameters (s and C), using the conversion equations from Guy et al. (2010). This was done in order to adopt the constants M , α , and β , from

Sullivan et al. (2011) and also used by Jones et al. (2013). Specifically, the distance modulus was calculated using the following equation:³⁶

$$dm_{\text{SALT2}} = m_B^* - M + \alpha(s-1) - \beta C, \quad (1)$$

with $M = -19.12 \pm 0.03$, $\alpha = 1.367 \pm 0.086$, and $\beta = 3.179 \pm 0.101$. To match the (for our purposes, arbitrary) normalization of the SALT2 fitter used by Guy et al. (2010) to our results from SNANA, we applied an offset of 0.27 mag to the value of m_B^* reported by SNANA.

We also used the Jha et al. (2007) version of MLCS2k2 included in SNANA to fit the SNe Ia. To check for consistency, we compared the best-fit light curve shape parameter Δ from MLCS2k2 to $x1$ from SALT2 using the relationship in Appendix G given by Kessler et al. (2009a). To compare the SALT2 color parameter c with MLCS2k2 A_V , we employ a linear relationship derived from Figure 42 of Kessler et al. (2009a), specifically

$$c = (0.464 \pm 0.021)A_V - (0.121 \pm 0.014). \quad (2)$$

Finally, to ensure a consistent zeropoint between the SALT2 and MLCS2k2 distance moduli, we applied both methods to a sample of SDSS Supernova Survey SNe Ia from Holtzman et al. (2008); Kessler et al. (2009a). We added a zeropoint correction of 0.20 mag to the distance moduli reported by SNANA in the MLCS2k2 fit (dm_{MLCS2k2}), to put them on the same scale as the SALT2 distances (dm_{SALT2}).

Although we report magnitudes in Tables 1, 2, and 3, both the classification and SN Ia light curve fitting were done in flux space. The upper limits for each SN were included in the fits with the measured flux and 1σ uncertainties.

3.1. SN CLO12Car

SN CLO12Car was located in a red disk galaxy, in which both SNe Ia and CC SNe could be expected. The STARDUST classifier prefers a SN Ia fit with probability (P_{Ia}) of 0.91. The probabilities for SN Ib/c ($P_{\text{Ib/c}}$) and SN II (P_{II}) models are 10^{-8} and 0.09, respectively. The best-fit SN Ia, SN Ib/c, and SN II models had χ^2/ν ($\nu = 11$) of 1.12, 4.56, and 1.76, respectively. PSNID also favors a SN Ia fit at a high confidence, with $P_{\text{Ia}} = 0.99$ and a best-fit $\chi^2/\nu = 1.06$ ($\nu = 11$)³⁷. We thus conclude that SN CLO12Car was a SN Ia.

Both MLCS2k2 and SALT2 produce good light-curve fits for SN CLO12Car. We show the SALT2 light-curve fit along with the 1σ model errors in Figure 5. The SALT2 fit had a $\chi^2/\nu = 13.3/11 = 1.21$, and the fit parameters ($x1 = 1.375 \pm 0.829$ and $c = 0.254 \pm 0.049$) are in the range of normal SNe Ia (Guy et al. 2010). From these parameters, we derive a distance modulus of $dm_{\text{SALT2}} = 43.83 \pm 0.24$ mag for the SN.

The MLCS2k2 light-curve fit had a slightly worse, but still acceptable, goodness-of-fit ($\chi^2/\nu = 18.1/11 = 1.64$). The model parameters were $\Delta = 0.007 \pm 0.314$ and $A_V = 0.635 \pm 0.190$ mag. The light curve shape parameters from the two fitters agree at $< 1\sigma$; specifically, the SALT2 $x1$ value corresponds to $\Delta = -0.380 \pm 0.160$. The best-fit MLCS2k2 A_V corresponds to $c = 0.174 \pm 0.090$, which is also $< 1\sigma$ from

³⁶ We use the notation “dm” for distance modulus, rather than the conventional μ , to avoid confusion with the lensing magnification μ . As usual, it is defined as $dm = 5 \log_{10} d_L + 25$, where d_L is the luminosity distance in Mpc.

³⁷ PSNID uses a luminosity prior, as discussed above. Correcting the light curve for lensing, assuming reasonable values of magnification between 1 mag of demagnification and 3 mag of magnification, changes the P_{Ia} value slightly (ranging from 0.87 to 0.99).

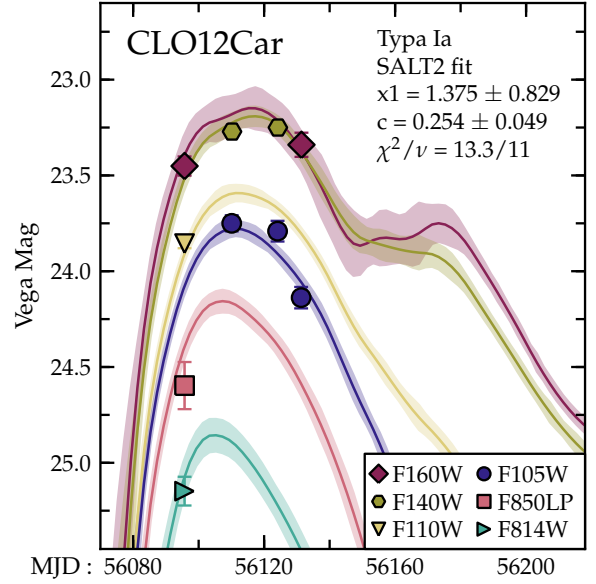


FIG. 5.— SALT2 light-curve fit of SN CLO12Car. The light-curve parameters $x1$ and c are typical of normal SNe Ia, and the data are well matched by the model, with $\chi^2/\nu = 13.3/11$.

the best-fit SALT2 color. Moreover, we find that $dm_{\text{MLCS2k2}} = 43.71 \pm 0.16$ mag (after applying the zeropoint correction), again consistent with the inferred dm_{SALT2} at $< 1\sigma$.

For comparison, at $z = 1.281$, the distance modulus expected from Λ CDM with our adopted cosmological parameters is $dm_{\Lambda\text{CDM}} = 44.76$ mag, significantly higher than what is measured from the SN light curve. We discuss the implications of this finding in §4.

3.2. SN CLN12Did

SN CLN12Did was located in an elliptical galaxy, already indicating it was most likely a SN Ia (Cappellaro et al. 1999; Mannucci 2005; Foley & Mandel 2013). The STARDUST classifier prefers a SN Ia fit at high confidence ($> 5\sigma$). PSNID also favors a SN Ia fit with high significance ($P_{\text{Ia}} > 0.9999$), with best-fit $\chi^2/\nu = 0.5$ ($\nu = 20$). These consistent results yield the strong conclusion that SN CLN12Did was a SN Ia.

We show the SALT2 SN Ia light-curve fit for SN CLN12Did in Figure 6. Similar to Figure 5, we display the light-curve points and the model curves with 1σ errors. Upper limits on F435W and F475W nondetections are excluded from the plot for clarity, but all of the observations listed in Table 2 are used in the light-curve fit. The SALT2 parameters fall within the normal SN Ia range, with $x1 = 0.383 \pm 0.208$, $c = -0.042 \pm 0.021$, and $\chi^2/\nu = 28.5/20 = 1.42$. From the light-curve parameters, we derive $dm_{\text{SALT2}} = 43.33 \pm 0.15$ mag.

MLCS2k2 produces a slightly better light-curve fit, with $\chi^2/\nu = 23.6/20 = 1.18$. The best-fit parameters are $A_V = 0.042 \pm 0.059$ mag and $\Delta = 0.055 \pm 0.098$. Using the conversion equations, the MLCS2k2 fit A_V corresponds to SALT2 $c = -0.102 \pm 0.031$, and the SALT2 $x1$ predicts MLCS2k2 $\Delta = -0.212 \pm 0.040$. This is good agreement in the color parameter, but a slight ($\sim 2.5\sigma$) discrepancy in light-curve shape. The inferred distance is $dm_{\text{MLCS2k2}} = 43.28 \pm 0.09$ mag, consistent with the SALT2 result. For comparison, at $z = 0.851$, the cosmological parameters yield $dm_{\Lambda\text{CDM}} = 43.65$

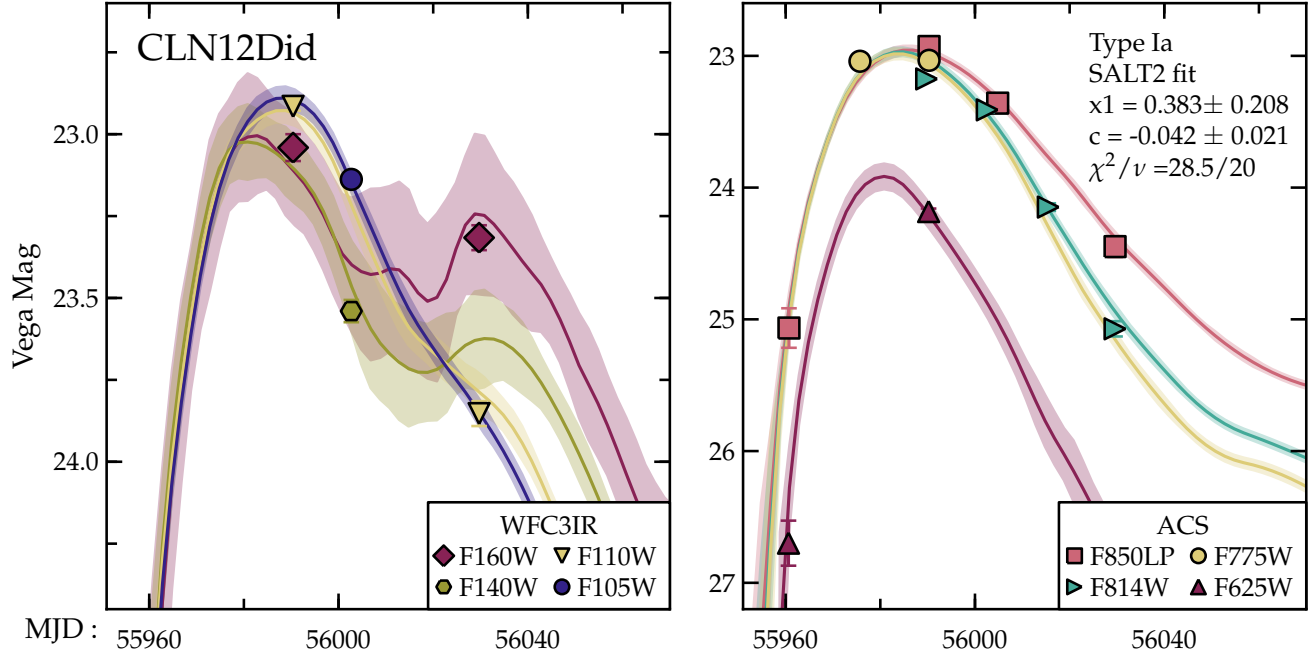


FIG. 6.— SALT2 light-curve fit of SN CLN12Did. Upper limits on F435W and F475W nondetections are excluded from the plot for clarity, but all of the observations listed in Table 2 are used in the light-curve fit. This model is a reasonably good match to the data, yielding $\chi^2/\nu = 1.4$. The best-fit light-curve parameters are typical for a normal SN Ia.

mag.

3.3. SN CLA11Tib

SN CLN12Tib is located in a spiral arm of its blue, late-type host galaxy, an environment in which all SN types can be found (Cappellaro et al. 1999; Mannucci 2005; Li et al. 2011; Foley & Mandel 2013). The STARDUST classifier prefers a CC fit for this SN, returning probabilities $P_{\text{II}} = 0.41$ and $P_{\text{Ib/c}} = 0.52$, compared to the SN Ia fit probability $P_{\text{Ia}} = 0.07$.

We show the light-curve fit for SN CLA11Tib in Figure 7, with each row giving the maximum-likelihood fit for a single SN subclass. The χ^2/ν ($\nu = 14$) values for the best-fit SN Ia, SN Ib/c, and SN II models are 3.81, 3.42, and 3.55, respectively. None of the three SN types are a good fit to the light-curve; moreover, none of the templates provide a good fit to all the WFC3/IR data. There are only 42 CC SNe templates, and we do not expect them to represent the full range of SNe II and SNe Ib/c. The SN II template that provides the best match to the observations is SDSS-018793 (SN 2007og), a SN IIP at $z = 0.20$ (Sako et al. 2014). For the SNe Ib/c, the best match comes from SN SDSS-017548 (SN 2007ms), a SN Ic at $z = 0.0393$ (Östman et al. 2011). The sole *HST* WFC3/IR F125W observation of SN CLA11Tib is close to the peak for both the SN IIP and SN Ic models; at $z = 1.143$, the F125W filter corresponds to approximately the rest *V* band. To further highlight the difficulty in photometrically classifying SN CLA11Tib, in Figure 8 we show color-color diagrams from the ACS and WFC3/IR photometry taken during 2011 Jan. 22–24, where the SN straddles the typical colors of SNe Ia, Ib/c, and II, though favoring CC SN models. The full STARDUST classification uses these types of constraints with all available epochs.

Our PSNID results disagree with those from the STARDUST classifier. PSNID favors a SN Ia fit for SN CLA11Tib at greater than 4σ . However, the best-fit PSNID SN Ia model

does not match the light curve well ($\chi^2/\nu = 2.83$, with $\nu = 14$). To check these results, we fit SN CLA11Tib with SALT2 and MLCS2k2 directly using SNANA. The best SALT2 fit has normal light-curve parameters, with $x1 = 0.114 \pm 0.486$ and $c = 0.048 \pm 0.037$, yielding $dm_{\text{SALT2}} = 44.07 \pm 0.19$ mag (for comparison, $dm_{\Lambda\text{CDM}} = 44.45$ mag). However, as with PSNID, the SNANA SALT2 fit requires an unacceptably large $\chi^2/\nu = 57.8/14 = 4.13$. These results do not change substantially if we use the restricted-wavelength version of SALT2; the fit remains poor. The MLCS2k2 results were much better ($\chi^2/\nu = 29.8/14 = 2.13$), with best-fit light-curve parameters of $A_V = 0.389 \pm 0.193$ mag, $\Delta = -0.011 \pm 0.244$, and $dm_{\text{MLCS2k2}} = 43.97 \pm 0.14$ mag. Using the conversion equations, the MLCS2k2 fit A_V corresponds to SALT2 $c = 0.059 \pm 0.091$, and the SALT2 $x1$ predicts MLCS2k2 $\Delta = -0.201 \pm 0.093$. Interestingly, the MLCS2k2 and SALT2 parameters are similar, but the SALT2 fit is significantly worse.

To summarize, our classification analysis of SN CLA11Tib is inconclusive. The light curve was best fit by CC SN templates with STARDUST, while PSNID preferred a SN Ia fit. Similar to SN CLO12Car, we corrected the light curve for a varying amount of lensing (from 1 mag of demagnification to 3 mag of magnification) and fit with PSNID to see if the luminosity prior was driving the classification. The value of P_{Ia} varied greatly, with the probability dropping to 0 with magnifications > 1.5 mag. Because of these conflicting results, we further explore both CC SN and SN Ia models in our lensing analysis of SN CLA11Tib (§4.3).

4. GRAVITATIONAL LENSING MAGNIFICATION

In this section, we derive the magnification of each SN in two independent ways. First, we use the SNe themselves, from the observed SN brightness and light-curve fits described in §3. Second, we independently determine the expected magnification from cluster mass maps derived by the

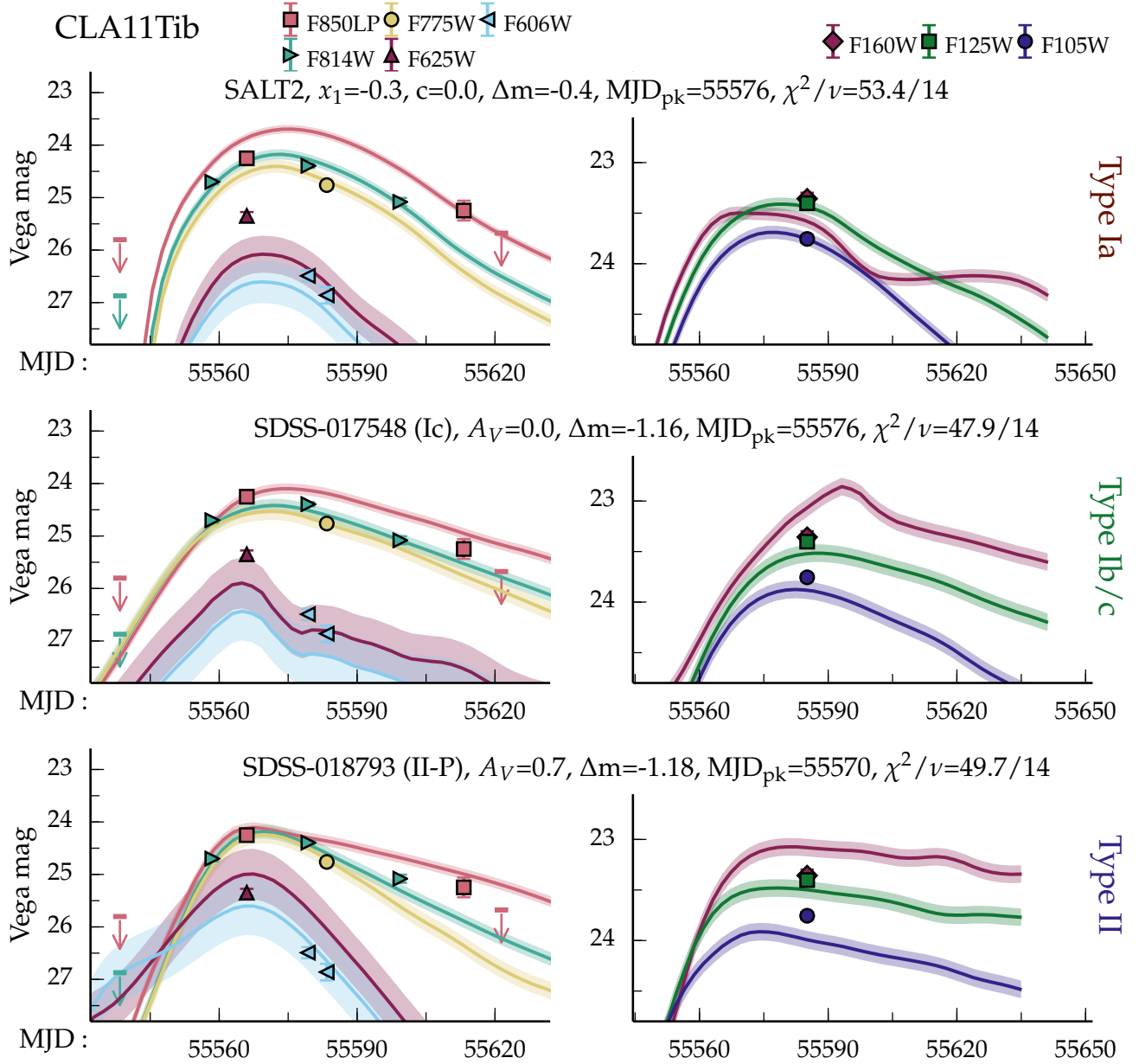


FIG. 7. — STARDUST light-curve fits to CLA11Tib for the three primary SN subclasses. The top row shows the maximum likelihood fit from a SN Ia (SALT2) model, the middle row displays the best-fit SN Ib/c model, and the bottom row shows the preferred SN II model. Optical data from ACS appear in the left column, while WFC3/IR observations are on the right. The CC SN models are labeled by the best-fit template SN, and all three models show the best-fit parameters. The downward pointing arrows indicate 3σ upper limits on the SN flux. The Δm term designates the offset (mag) needed to make the template match the data, discussed further in §4.3.

CLASH team from strong+weak lensing features.

One approach to inferring the SN magnification is simply measuring the offset between the inferred distance modulus and that predicted by the cosmological model ($\Delta m_{\Lambda\text{CDM}}$). In that case, however, statistical and systematic uncertainties in the cosmological parameters (which are themselves derived in part from SNe Ia over a wide redshift range) need to be included in the analysis. A more direct approach is to compare the CLASH SNe directly to a “field” sample at similar redshifts. For a sufficiently small redshift range, the relation between distance modulus and redshift can be taken to be linear.

The field sample of SNe Ia define the zeropoint and slope of that relationship, and we derive the inferred magnification of our SN Ia relative to that locus, with all of these SNe analyzed in an identical way. This differential approach is insensitive to zeropoint offsets between the fitters and cosmological parameters, and only makes the assumption that all SNe Ia at nearly the same redshift are consistently standardizable (so it is less susceptible to evolution or other SN Ia systematics that vary with redshift).

For the predicted magnification from the CLASH cluster mass maps, we analyzed both the strong and weak lensing

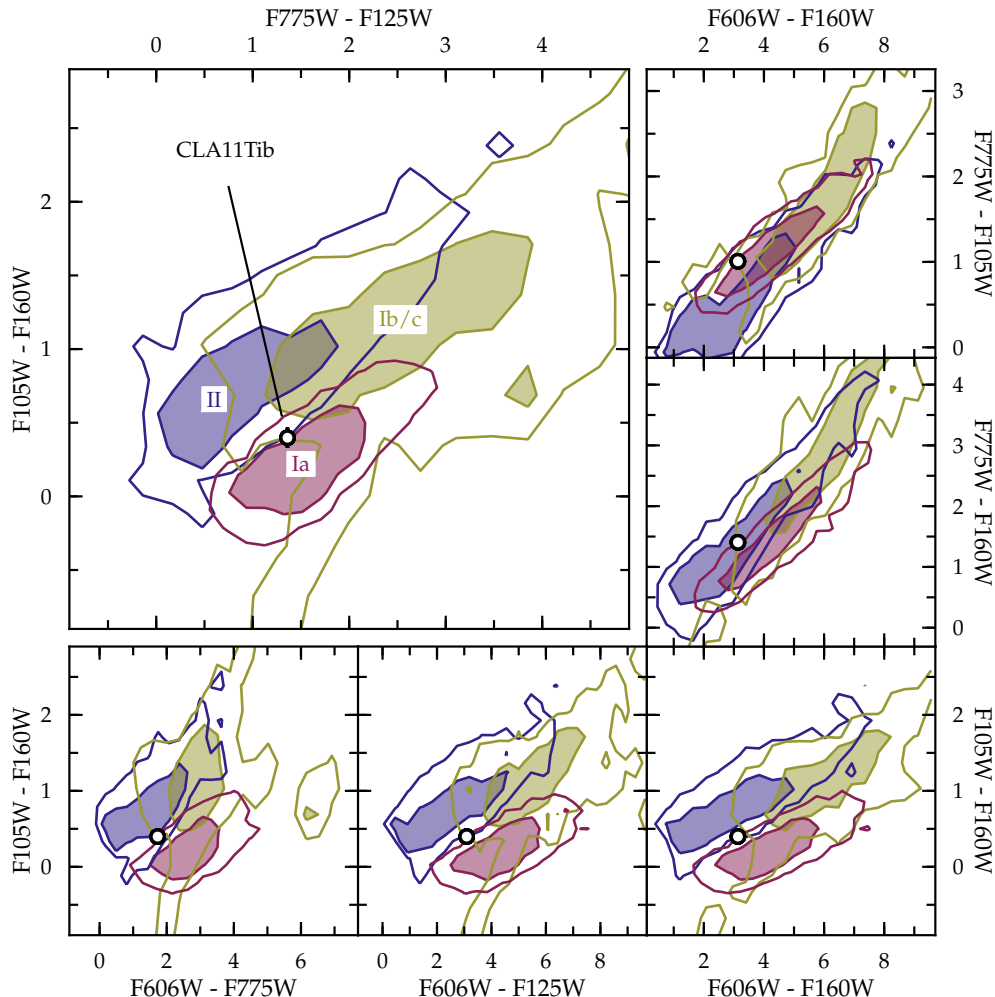


FIG. 8.— Color-color diagrams for SN CLA11Tib photometry from MJD 55583–55585, illustrating the difficulty in photometric classification of this object. We utilize color-based classification so as to be unaffected by achromatic gravitational lensing. The data favor a core-collapse origin for this SN (either SN Ib/c or SN II). The contours shown are derived from SNANA Monte Carlo simulations with 5000 simulated SNe for each of the 3 subclasses (so they do not reflect the relative frequency across classes). Shaded regions enclose 68% of each population and solid lines enclose 95%.

features in the clusters. The identification of multiple images in the cluster fields was done using the 16-band *HST* imaging obtained in the context of the CLASH campaign. The Zitrin et al. (2009) method revealed nine multiple image systems in the case of Abell 383 and seven systems in MACS J1720. Unfortunately, no multiple-image systems were found in the field of RX J1532, the cluster with the lowest total mass in this study. Where available, spectroscopic redshifts from the literature or the CLASH-VLT program (Balestra et al. 2013) determined the distance to the strong lensing features. The reliable 16-band photometric redshifts (Jouvel et al. 2013) from the CLASH pipeline delivered the redshifts of systems without spectroscopic confirmation. In the case of weak lensing, we used 5-band CLASH Subaru imaging to derive weak lensing shear catalogues. The underlying pipeline for image reduction, shape measurement, and background selection is thoroughly outlined by Umetsu et al. (2012) and Medezinski et al. (2013).

To combine the constraints from the weak and strong lensing regime into a consistent lens model, we used SaWLens (Merten et al. 2009; Meneghetti et al. 2010; Merten et al.

2011; Umetsu et al. 2012; Medezinski et al. 2013). This non-parametric method also reconstructs the mass distribution in the regime far away from the strong lensing features, or where no strong lensing features are available, and both cases apply in our study. By nonparametric, we mean that no *a priori* assumptions on the mass distribution of the lens were made. The method reconstructs the lensing potential, the rescaled and line-of-sight integrated counterpart of the Newtonian potential, on an adaptively refined mesh using both weak and strong lensing inputs. In the case of RX J1532, where no strong lensing features were found, we use only the shear catalogues to constrain the lens mass distribution. From the lensing potential maps we directly derive the magnification (e.g., Bartelmann 2010) at the redshift of interest and read off its value at the position of each SN, as described individually below. In order to assign error bars to these values, we run 1500 realizations of each lens model by bootstrapping the weak lensing input catalogues and randomly sampling through the allowed redshift error range of each strong lensing feature (Merten et al. 2011).

The independent magnification estimates, from both meth-

ods above, are summarized in Table 4. We consider each object individually below. Because we could not conclusively classify SN CLA11Tib, we consider both the SN Ia and CC SN models for it (§4.3).

4.1. SN CLO12Car

We showed in §2.1 and §3.1 that SN CLO12Car was a SN Ia at $z = 1.281$. In Figure 9, we display two Hubble diagrams for the SN. The top plot contains SN Ia distances fit with SALT2 and the bottom plot with MLCS2k2. Both plots also show a comparison sample of 18 field SNe Ia from Riess et al. (2007) and Suzuki et al. (2012) in the range $1.14 \leq z \leq 1.41$, fit in exactly the same manner as SN CLO12Car. Consistently with either light-curve fitter, we find that SN CLO12Car was significantly brighter than the typical SNe Ia at a similar redshift. The solid black line in both panels represents the best linear fit to the field SN Ia sample, with the fit slope and intercept as shown.³⁸ From this analysis, we can estimate the lensing magnification as determined by the SN itself. The linear fits to the field sample predict $dm_{\text{SALT2}}(z = 1.281) = 44.74 \pm 0.07$ mag and $dm_{\text{MLCS2k2}}(z = 1.281) = 44.77 \pm 0.05$ mag. With these values, we derive that SN CLO12Car was magnified by $\Delta m_{\mu, \text{SALT2}} = 0.91 \pm 0.25$ mag (corresponding to a magnification $\mu_{\text{SALT2}} = 2.31 \pm 0.54$) in the SALT2 model, or $\Delta m_{\mu, \text{MLCS2k2}} = 1.06 \pm 0.17$ mag ($\mu_{\text{MLCS2k2}} = 2.65 \pm 0.42$) with MLCS2k2.

The cluster lensing magnification map (derived as described above) around MACS J1720 for a source at the SN redshift ($z = 1.281$) is shown in Figure 10. From the map, we derive a lensing magnification for SN CLO12Car of $\mu = 2.15 \pm 0.33$, which corresponds to $\Delta m_{\mu} = 0.83 \pm 0.16$ mag. The magnification from the light-curve fits and the lensing maps agree to well within 1σ . Moreover, SN CLO12Car is inconsistent with being unlensed; its SN Ia fit requires $\Delta m_{\mu} > 0$ at $\sim 4\sigma$.

4.2. SN CLN12Did

We showed in §2.2 and §3.2 that SN CLN12Did was a SN Ia at $z = 0.851$. In Figure 11, we display two Hubble diagrams for the SN, mirroring the analysis for SN CLO12Car (see §4.1 and Figure 9). The comparison field sample contains 63 SNe Ia from the SNLS sample (Guy et al. 2010) in the range $0.75 \leq z \leq 0.95$. Unlike the case for SN CLO12Car, we see that SN CLN12Did falls well within the normal scatter for typical SNe Ia in the redshift range. Both light-curve fitters do find SN CLN12Did to be brighter than expected compared to the field sample, but not significantly so ($\sim 1\sigma$). Our inferred magnification estimates for SN CLN12Did are $\Delta m_{\mu, \text{SALT2}} = 0.24 \pm 0.15$ mag ($\mu_{\text{SALT2}} = 1.25 \pm 0.18$) and $\Delta m_{\mu, \text{MLCS2k2}} = 0.15 \pm 0.09$ mag ($\mu_{\text{MLCS2k2}} = 1.15 \pm 0.10$).

The cluster lensing magnification map around RX J1532 for a source at $z = 0.851$ is shown in Figure 12. It predicts a lensing magnification for SN CLN12Did of $\Delta m_{\mu} = 0.28 \pm 0.08$ mag ($\mu = 1.29 \pm 0.09$). Just like in the case of SN CLO12Car, the lensing map prediction is consistent with the magnification inferred from the SN light curve, though for SN CLN12Did the magnification is only detected at low significance.

³⁸ Three of the Suzuki et al. (2012) SNe Ia plotted in Figure 9 were also behind galaxy clusters and potentially lensed. However, the object with the highest estimated magnification still only has $\mu = 1.07$, corresponding to $\Delta m_{\mu} = 0.07$ mag, well within the SN Ia scatter. Removing these three SNe Ia from the comparison sample has a negligible effect on our results.

4.3. SN CLA11Tib

We were unable to classify SN CLA11Tib conclusively (see §3.3), so we take a slightly different approach to the analysis for this object. Figure 13 shows the predicted lensing magnification map for a source at the redshift of SN CLA11Tib ($z = 1.143$) behind Abell 383. From the map, we derive a lensing magnification for the SN of $\mu = 1.48 \pm 0.15$, which corresponds to $\Delta m_{\mu} = 0.43 \pm 0.11$ mag.

If we assume that SN CLA11Tib was a SN Ia, repeating the analysis above (as for SN CLO12Car and SN CLN12Did) yields magnification estimates for SN CLA11Tib of $\Delta m_{\mu, \text{SALT2}} = 0.52 \pm 0.20$ mag and $\Delta m_{\mu, \text{MLCS2k2}} = 0.64 \pm 0.15$ mag. However, as mentioned in §3.3, the SALT2 light-curve fit is unacceptable, with $\chi^2/\nu = 57.8/14 = 4.13$, making the inferred distance unreliable. The MLCS2k2 light-curve fit ($\chi^2/\nu = 29.8/14 = 2.13$) is much better, and agrees well with the lensing map prediction (within 1σ). However, due to the discrepancy of the goodness of fit between MLCS2k2 and SALT2, we hesitate to definitively classify the SN as a SN Ia.

To compare both SN Ia and CC SN models in the lensing analysis for SN CLA11Tib, we show in Figure 14 the goodness-of-fit for both sets of models. The plot gives the best-fit SN Ia results as above, as well as SN II and SN Ib/c templates (restricted to those with $\chi^2/\nu < 5$). For the CC SN templates, STARDUST calculates a magnitude offset Δm (shown also in Figure 7) that is required for the best match of the template to the data, and we show this on the abscissa of Figure 14.

We found that the best-fitting CC SN models (albeit at $\chi^2/\nu > 3$) from STARDUST were the SN Ic SDSS-017548 and the SN IIP SDSS-018793. The SN Ic and SN IIP models had best-fit model $m_J = 23.52 \pm 0.08$ mag and $m_J = 23.48 \pm 0.08$ mag, respectively. The observed red color of SN CLA11Tib matches the SN Ic model with no relative extinction, but the SN II model requires $A_V = 0.7$ mag. Including this, we find the unextinguished absolute magnitudes of the models are $M_R = -19.34 \pm 0.08$ mag (SN Ic) or $M_R = -20.43 \pm 0.08$ mag (SN IIP). These are quite bright for CC SNe, though some of this could be a result of the lensing magnification. The peak M_R required by both models is much brighter than the original templates; the SN SDSS-017548 and SN SDSS-018793 spectral energy distributions have $M_R = -18.00$ mag and $M_R = -18.55$ mag, respectively. The offset between the template and data (Δm ; Figures 7 and 14) is -1.16 mag for the SN Ic model and -1.18 mag for the SN IIP model. These would be our best estimates for the lensing magnification based on the SN light curve, but an abundance of caution is warranted, as these estimates assume that SN CLA11Tib had the same intrinsic luminosity as the best-fit template, a dubious proposition given the large luminosity scatter of CC SNe (Li et al. 2011; Drout et al. 2011; Kiewe et al. 2012). Because of this, if we assume a CC SN fit, we cannot claim that there is any consistency or inconsistency between the lensing prediction for SN CLA11Tib and its brightness.

5. DISCUSSION AND CONCLUSION

SN CLO12Car clearly represents our most exciting result. We find that it is likely a SN Ia at $z = 1.281$, gravitationally magnified by $\sim 1.0 \pm 0.2$ mag. The magnification derived from two independent methods (the SN light curve and the cluster lensing maps), were consistent to within 1σ . SN CLO12Car is the first SN Ia which is both measurably

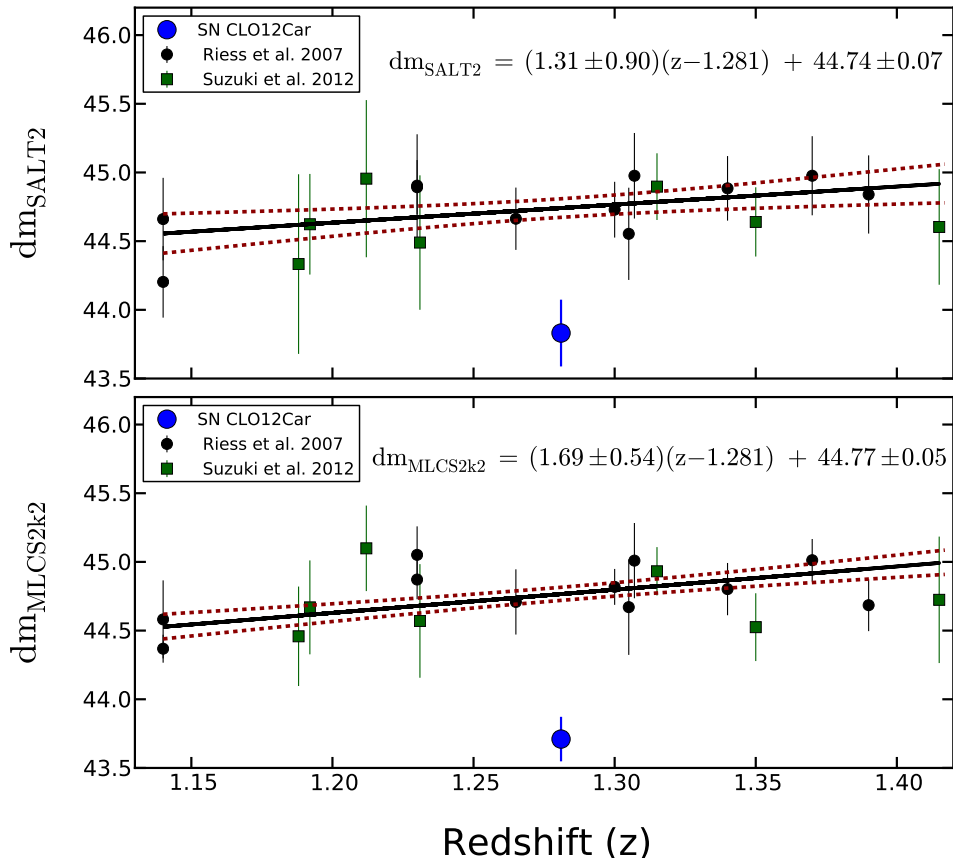


FIG. 9.— Hubble diagrams for SN CLO12Car. The top panel shows SN Ia distances fit with SALT2 and the bottom panel has MLCS2k2 fits. The plots contain 18 field SNe Ia from Riess et al. (2007, in black) and Suzuki et al. (2012, in green) as a comparison sample. Both light-curve fitters show that SN CLO12Car (the large blue point) was significantly brighter than typical SNe Ia at similar redshifts. The solid black lines with the displayed equations give the best-fit linear model to the comparison sample (empirically approximating a cosmological fit over this small redshift range without any dependence on cosmological parameters), with the red dashed lines representing the 1σ uncertainties. From these data, we predict that a typical unlensed SN Ia at $z = 1.281$ would have $dm_{\text{SALT2}} = 44.74 \pm 0.07$ mag and $dm_{\text{MLCS2k2}} = 44.77 \pm 0.05$ mag. Compared to the inferred distance modulus of SN CLO12Car, we find that it was magnified by $\Delta m_{\mu, \text{SALT2}} = 0.91 \pm 0.25$ mag or $\Delta m_{\mu, \text{MLCS2k2}} = 1.06 \pm 0.17$ mag. Both light-curve fitters give a consistent and significant magnification (greater than unity).

magnified (i.e., with $\Delta m_{\mu} > 0$ at high significance) and for which the lensing magnification can be precisely and independently derived. SN CLN12Did is also a SN Ia with a consistent (but not significant) supernova-based and model-based lensing magnification, whereas the unclear classification of SN CLA11Tib does not allow for a test of the lens model prediction.

The lens models used here were constructed jointly with both strong-lensing constraints (multiple images) and weak-lensing constraints. In principle, the strong-lensing multiple images directly constrain the deflection field, which is the gradient of the potential, while the weak lensing ellipticity measurements further out constrain the (reduced) shear, a combination of second-order derivatives of the potential. As an alternative to the analysis presented here (where we independently tested the estimated magnifications), lensed standard candles like SNe Ia can play an important role as an additional *direct*, local constraint on the magnification (which is a function of the convergence κ , and the shear γ , both constructed from second-order derivatives of the potential) in the lens model (e.g., Riehm et al. 2011).

Gathering large samples of lensed SNe Ia is clearly of inter-

est. Due to the magnification power of the foreground lenses, lensed SNe could be expected to be seen to higher redshifts than field SNe (for a given limiting magnitude), with applications to extending the redshift coverage of cosmological parameter measurements (if the lensing magnification can be estimated precisely and accurately enough, e.g., Zitrin et al. 2013) or SN rate measurements to constrain progenitor models (e.g., Graur et al. 2014; Rodney et al. 2013). There is also the exciting prospect of finding multiply-imaged SNe, with measured time-delays as a new cosmographic constraint (e.g., Holz 2001; Goobar et al. 2002; Oguri & Kawano 2003; Oguri et al. 2003).

SN Ia luminosity distances, combined with lens model magnification estimates (which depend on angular diameter distances to and between the lens and source) or time-delay distances from multiple SN images, could also open up new tests of general relativity (e.g., Daniel & Linder 2010; Jain & Khoury 2010; Schwab et al. 2010) or even fundamental cosmological assumptions, like the distance duality relation (e.g., Lampeitl et al. 2010; Liang et al. 2013).

Though the CLASH survey has ended, the three lensed SNe found behind CLASH clusters herald the promise of many

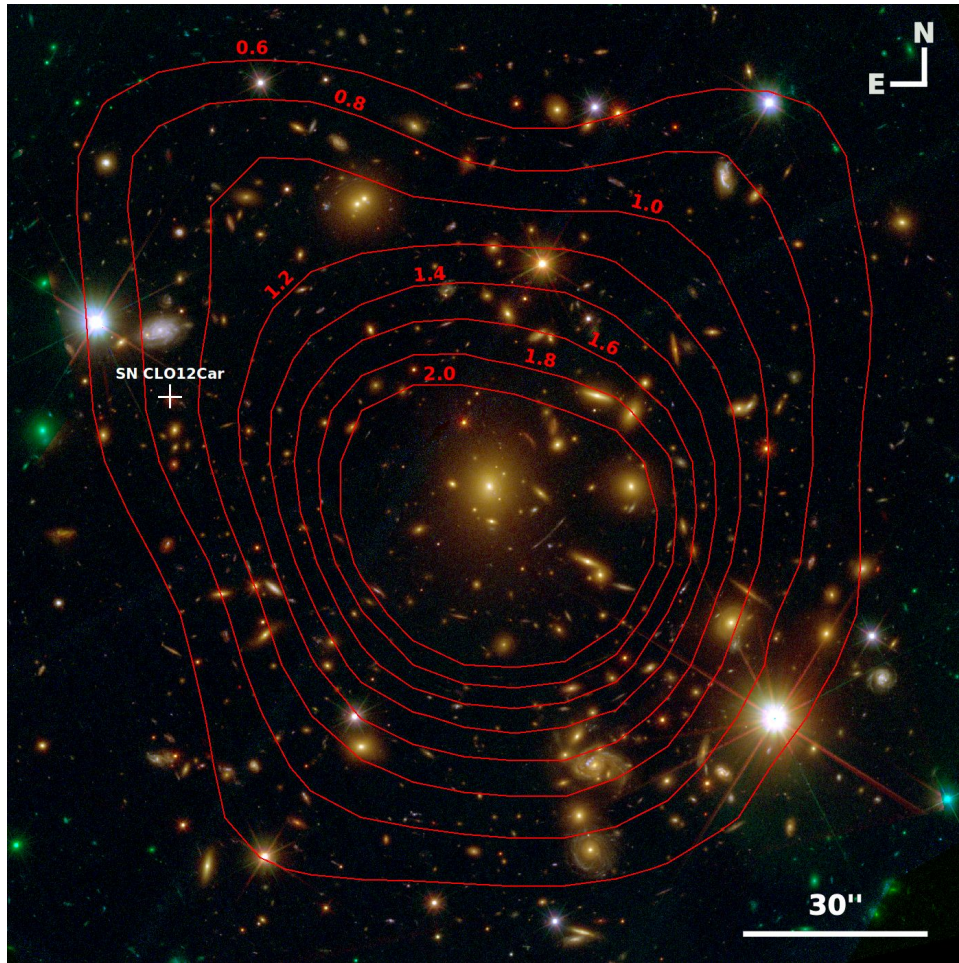


FIG. 10.— Magnification map for SN CLO12Car ($z = 1.281$) behind MACSJ1720.2+3536 ($z = 0.391$). The image shows an RGB false-color background based on 12-band *HST*/CLASH optical and near-IR images of the cluster field. The location of the SN is marked with a white cross. The contours show the magnitude increase induced by the lensing magnification ($\Delta m_{\mu} = 2.5 \log_{10} \mu$) of the cluster for a source at the SN redshift. The lensing magnification was derived from weak and strong lensing constraints jointly, and computed using the SaWLens lensing reconstruction algorithm (Merten et al. 2009, 2011). Multiple images used for the strong lensing constraints in this system will be presented by Zitrin et al. (in prep.).

more such discoveries in the near future, including from wide-field ground-based surveys like the Dark Energy Survey (Friedman & Dark Energy Survey Collaboration 2013; Bernstein et al. 2012), Pan-STARRS (Rest et al. 2013, and references therein), and ultimately LSST (LSST Science Collaboration et al. 2009); ground-based surveys that target massive galaxy clusters, such as CluLeSS (Jha et al., in prep.) or SIRCLS (Graham et al. 2013); and targeted space-based surveys like the *HST* Frontier Fields (PI M. Mountain; with SN follow-up observations in program GO-13396, PI S. Rodney). SNe Ia were the key to the discovery of the accelerating Universe; perhaps gravitationally lensed SNe Ia will play a starring role in further illuminating the dark Universe, probing not just dark energy, but dark matter as well.

We would like to thank Rick Kessler for invaluable assistance with SNANA. We are grateful to Jakob Nordin for helpful discussions, and Saul Perlmutter and the Supernova Cosmology Project for communication and coordination.

This research at Rutgers University was supported through NASA/*HST* grant GO-12099.14 and National Science Foundation (NSF) CAREER award AST-0847157 to S.W.J. Support for S.R. and A.Z. was provided by NASA through Hubble

Fellowship grants HST-HF-51312.01 and HST-HF-51334.01, respectively, awarded by the Space Telescope Science Institute, which is operated by the Association of Universities for Research in Astronomy, Inc., for NASA, under contract NAS 5-26555. L.I. thanks Basal/CATA CONICYT funding for support. This research was carried out in part at the Jet Propulsion Laboratory, California Institute of Technology, under a contract with NASA. Support for *HST* programs GO-12065 and GO-12099 was provided by NASA through a grant from the Space Telescope Science Institute, which is operated by the Association of Universities for Research in Astronomy, Incorporated, under NASA contract NAS5-26555. A.V.F. is also grateful for the support of NSF grant AST-1211916, the TABASGO Foundation, and the Christopher R. Redlich Fund. Support for M.N. was provided in part by grant PRIN-INAF 2010.

Some of the observations reported in this paper were obtained with the Southern African Large Telescope (SALT), through Rutgers University program 2011-3-RU-001 (PI C. McCully). This work was supported by a NASA Keck PI Data Award, administered by the NASA Exoplanet Science Institute. Data presented herein were obtained at the W. M. Keck Observatory from telescope time allocated to

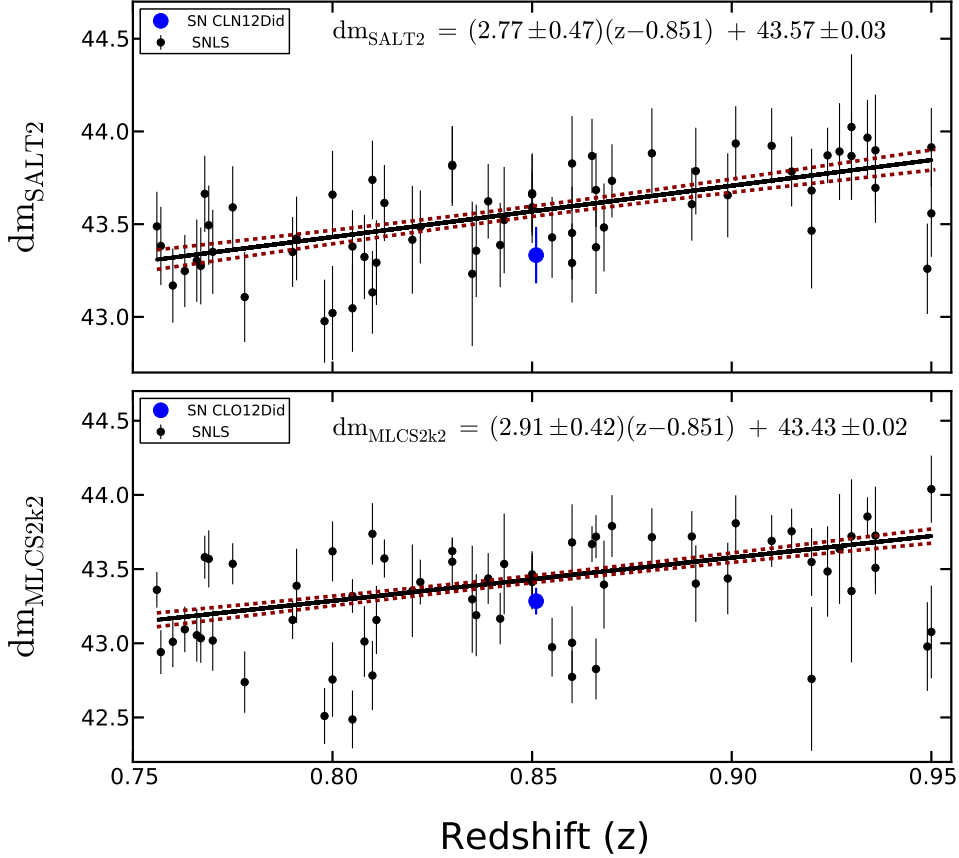


FIG. 11.— Hubble diagrams for SN CLN12Did. As in Figure 9, the top and bottom panels show SALT2 and MLCS2k2 fits, respectively. The field comparison sample consists of 63 SNe Ia from SNLS (Guy et al. 2010). Both light-curve fitters suggest slight (but insignificant) magnification for the SN, with $\Delta m_{\mu, \text{SALT2}} = 0.24 \pm 0.15$ mag and $\Delta m_{\mu, \text{MLCS2k2}} = 0.15 \pm 0.09$ mag.

the National Aeronautics and Space Administration through the agency’s scientific partnership with the California Institute of Technology and the University of California. The Observatory was made possible by the generous financial support of the W. M. Keck Foundation. The authors recognize and acknowledge the very significant cultural role and reverence that the summit of Mauna Kea has always had within the indigenous Hawaiian community, and we are most privileged to have the opportunity to explore the Universe from this mountain. This work is based in part on data collected at the Subaru telescope and obtained from the Subaru-Mitaka-Okayama-Kiso Archive, which is operated by the Astronomy Data Center, National Astronomical Observatory of Japan.

Additional data were obtained at the Gemini Observatory, which is operated by the Association of Universities for Research in Astronomy, Inc., under a cooperative agreement with the NSF on behalf of the Gemini partnership: the National Science Foundation (United States), the National Research Council (Canada), CONICYT (Chile), the Australian Research Council (Australia), Ministério da Ciência, Tecnologia e Inovação (Brazil) and Ministerio de Ciencia, Tecnología e Innovación Productiva (Argentina). The data were taken as part of programs GN-2012A-Q-32 and GN-2013A-Q-25.

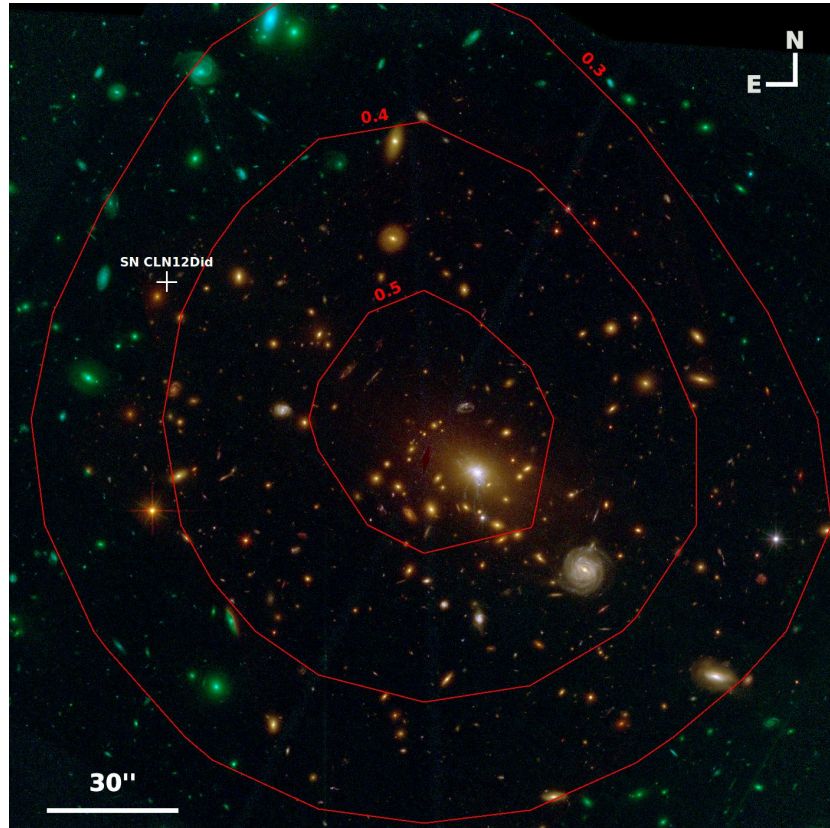


FIG. 12.— Magnification map for SN CLN12Did ($z = 0.851$) behind RXJ1532.9+3021 ($z = 0.345$). Similar to Figure 10, the color image is based on CLASH optical and near-IR images, with the SN location marked by a white cross and lensing magnification (Δm_μ , in mag units) shown with red contours. Because RX J1532 is a much weaker lensing cluster than either MACS J1720 or Abell 383, this map was derived using weak lensing constraints alone, computed with the SaWLens algorithm (Merten et al. 2009, 2011). The resolution of the reconstructed map from weak-lensing constraints is much poorer than for the other two clusters, so the displayed contours are heavily smoothed, and the Monte Carlo magnification estimate at the SN position is actually $\Delta m_\mu = 0.28 \pm 0.08$ mag.

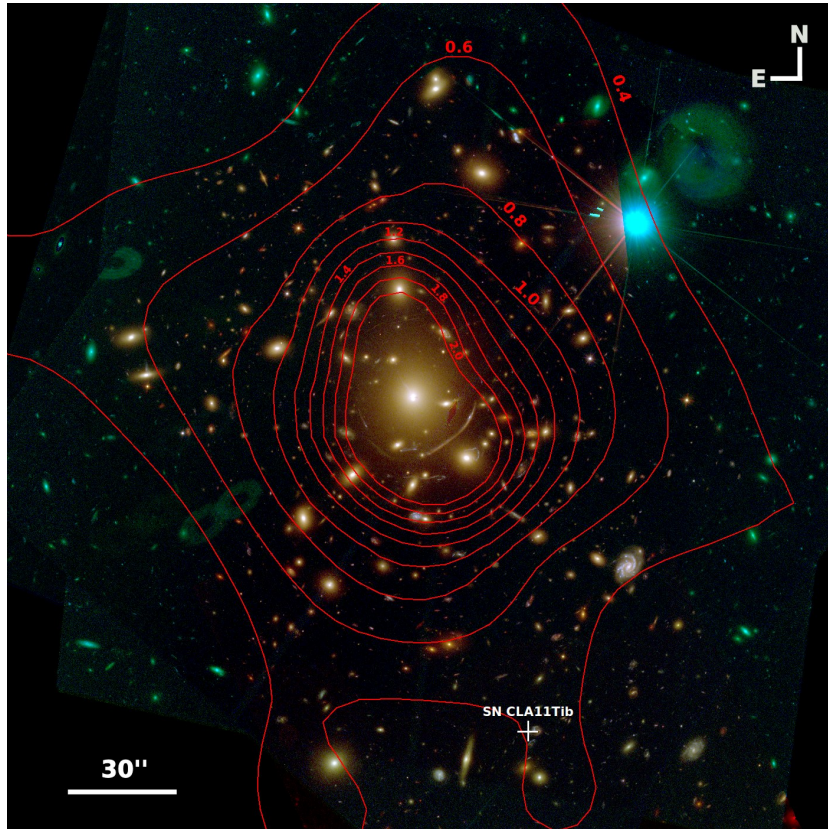


FIG. 13.— Magnification map for SN CL11Tib ($z = 1.143$) behind Abell 383, similar to Figures 10 and 12, computed from the SaWLens algorithm (Merten et al. 2009, 2011) from strong and weak lensing constraints. The strong lens multiple images in this system were presented by Zitrin et al. (2011).

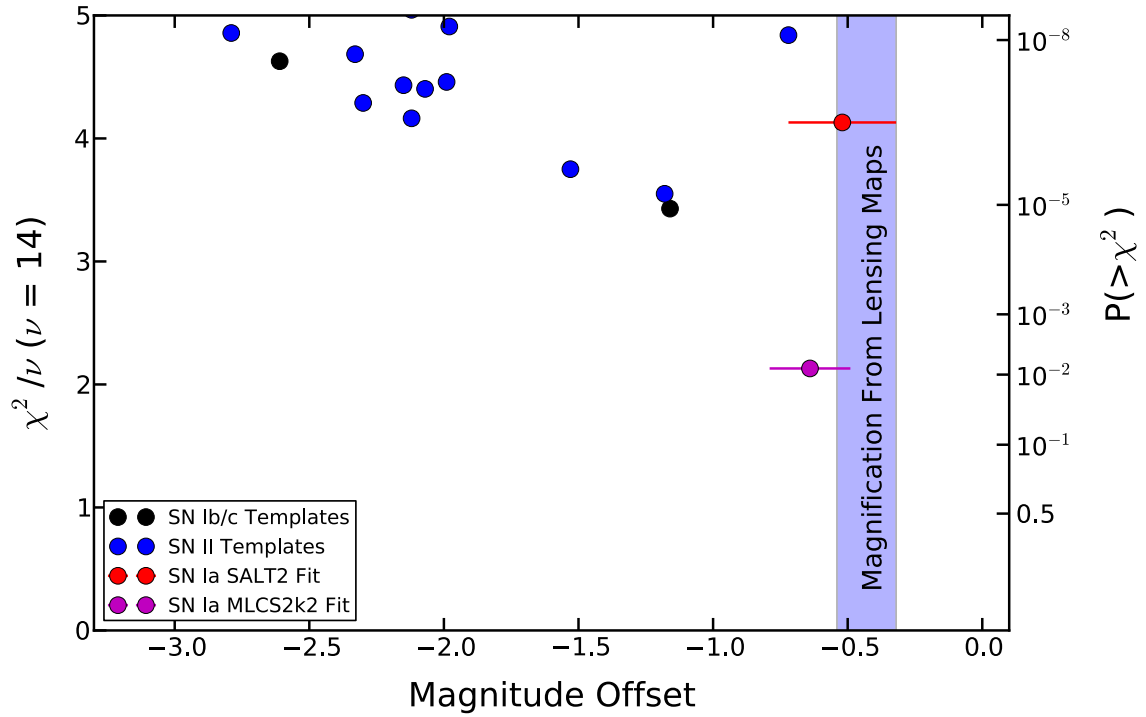


FIG. 14.— Reduced χ^2 (with 14 degrees of freedom) versus magnitude offset for SN CLA11Tib. The magnitude offset is a proxy for Δm_μ from the light-curve fit model, as described in the text. The cumulative probability for a given χ^2_ν value is displayed on the right-hand side. The blue shaded region corresponds to the 1σ range of Δm_μ derived from the lensing map in Figure 13. The black and blue points correspond to SN Ib/c and SN II models, respectively, while the red (SALT2) and magenta (MLCS2k2) points are the best-fit SN Ia models. Only the MLCS2k2 fit is consistent with both the SN light curve and the lensing map magnification prediction, but the CC SN templates do not span the full range of CC SN luminosities and light curves.

REFERENCES

- ????
08. 1
Abazajian, K. N., Adelman-McCarthy, J. K., Agüeros, M. A., et al. 2009, *ApJS*, 182, 543
Abell, G. O., Corwin, Jr., H. G., & Olowin, R. P. 1989, *ApJS*, 70, 1
Amanullah, R., Goobar, A., Clément, B., et al. 2011, *ApJ*, 742, L7
Balestra, I., Vanzella, E., Rosati, P., et al. 2013, *A&A*, 559, L9
Bartelmann, M. 2010, *Classical and Quantum Gravity*, 27, 233001
Bazin, G., Palanque-Defabrouille, N., Rich, J., et al. 2009, *A&A*, 499, 653
Benítez, N., Riess, A., Nugent, P., et al. 2002, *ApJ*, 577, L1
Bernstein, J. P., Kessler, R., Kuhlmann, S., et al. 2012, *ApJ*, 753, 152
Botticella, M. T., Smartt, S. J., Kennicutt, R. C., et al. 2012, *A&A*, 537, A132
Cappellaro, E., Evans, R., & Turatto, M. 1999, *A&A*, 351, 459
Chornock, R., Berger, E., Rest, A., et al. 2013, *ApJ*, 767, 162
Conley, A., Sullivan, M., Hsiao, E. Y., et al. 2008, *ApJ*, 681, 482
Conley, A., Guy, J., Sullivan, M., et al. 2011, *ApJS*, 192, 1
Crawford, S. M., Still, M., Schellart, P., et al. 2010, in *Society of Photo-Optical Instrumentation Engineers (SPIE) Conference Series*, Vol. 7737, *Society of Photo-Optical Instrumentation Engineers (SPIE) Conference Series*
Dahlen, T., Strolger, L.-G., Riess, A. G., et al. 2004, *ApJ*, 613, 189
Daniel, S. F., & Linder, E. V. 2010, *Phys. Rev. D*, 82, 103523
Dilday, B., Bassett, B., Becker, A., et al. 2010, *ApJ*, 715, 1021
Dolphin, A. E. 2000, *PASP*, 112, 1383
Dressel, L. 2012, *Wide Field Camera 3 Instrument Handbook for Cycle 21 v. 5.0*
Drott, M. R., Soderberg, A. M., Gal-Yam, A., et al. 2011, *ApJ*, 741, 97
Ebeling, H., Edge, A. C., Bohringer, H., et al. 1998, *MNRAS*, 301, 881
Ebeling, H., Edge, A. C., Mantz, A., et al. 2010, *MNRAS*, 407, 83
Faber, S. M., Phillips, A. C., Kibrick, R. I., et al. 2003, in *Society of Photo-Optical Instrumentation Engineers (SPIE) Conference Series*, Vol. 4841, *Instrument Design and Performance for Optical/Infrared Ground-based Telescopes*, ed. M. Iye & A. F. M. Moorwood, 1657–1669
Foley, R. J., & Mandel, K. 2013, *ApJ*, 778, 167
Frieman, J., & Dark Energy Survey Collaboration. 2013, in *American Astronomical Society Meeting Abstracts*, Vol. 221, *American Astronomical Society Meeting Abstracts*, #335.01
Gilliland, R. L., Nugent, P. E., & Phillips, M. M. 1999, *ApJ*, 521, 30
Goobar, A., Mörtzell, E., Amanullah, R., & Nugent, P. 2002, *A&A*, 393, 25
Goobar, A., Paech, K., Stanishev, V., et al. 2009, *A&A*, 507, 71
Graham, M. L., Pritchett, C. J., Sullivan, M., et al. 2008, *AJ*, 135, 1343
Graham, M. L., Sand, D. J., Pritchett, C. J., et al. 2013, *The Astronomer's Telegram*, 5017, 1
Graur, O., Rodney, S. A., Maoz, D., et al. 2014, *ApJ*, 783, 28
Guy, J., Sullivan, M., Conley, A., et al. 2010, *A&A*, 523, A7
Hicken, M., Wood-Vasey, W. M., Blondin, S., et al. 2009, *ApJ*, 700, 1097
Holtzman, J. A., Marriner, J., Kessler, R., et al. 2008, *AJ*, 136, 2306
Holz, D. E. 2001, *ApJ*, 556, L71
Holz, D. E., & Linder, E. V. 2005, *ApJ*, 631, 678
Hook, I. M., Jørgensen, I., Allington-Smith, J. R., et al. 2004, *PASP*, 116, 425
Jain, B., & Khoury, J. 2010, *Annals of Physics*, 325, 1479
Jha, S., Riess, A. G., & Kirshner, R. P. 2007, *ApJ*, 659, 122
Jones, D. O., Rodney, S. A., Riess, A. G., et al. 2013, *ApJ*, 768, 166
Jönsson, J., Sullivan, M., Hook, I., et al. 2010, *MNRAS*, 405, 535
Jouvel, S., Host, O., Lahav, O., et al. 2013, *ArXiv e-prints*, arXiv:1308.0063
Karpenka, N. V., March, M. C., Feroz, F., & Hobson, M. P. 2013, *MNRAS*, 433, 2693
Kessler, R., Becker, A. C., Cinabro, D., et al. 2009a, *ApJS*, 185, 32
Kessler, R., Bernstein, J. P., Cinabro, D., et al. 2009b, *PASP*, 121, 1028
Kessler, R., Bassett, B., Belov, P., et al. 2010, *PASP*, 122, 1415
Kiewe, M., Gal-Yam, A., Arcavi, I., et al. 2012, *ApJ*, 744, 10
Kneib, J.-P., Ellis, R. S., Santos, M. R., & Richard, J. 2004, *ApJ*, 607, 697
Kolatt, T. S., & Bartelmann, M. 1998, *MNRAS*, 296, 763
Kronborg, T., Hardin, D., Guy, J., et al. 2010, *A&A*, 514, A44
Lampeitl, H., Nichol, R. C., Seo, H.-J., et al. 2010, *MNRAS*, 401, 2331
Le Fèvre, O., Saisse, M., Mancini, D., et al. 2003, in *Society of Photo-Optical Instrumentation Engineers (SPIE) Conference Series*, Vol. 4841, *Instrument Design and Performance for Optical/Infrared Ground-based Telescopes*, ed. M. Iye & A. F. M. Moorwood, 1670–1681
Li, W., Leaman, J., Chornock, R., et al. 2011, *MNRAS*, 412, 1441
Liang, N., Li, Z., Wu, P., et al. 2013, *MNRAS*, 436, 1017
LSST Science Collaboration, Abell, P. A., Allison, J., et al. 2009, *ArXiv e-prints*, arXiv:0912.0201
Mannucci, F. 2005, in *Astronomical Society of the Pacific Conference Series*, Vol. 342, *1604-2004: Supernovae as Cosmological Lighthouses*, ed. M. Turatto, S. Benetti, L. Zampieri, & W. Shea, 140
Martel, H., & Premadi, P. 2008, *ApJ*, 673, 657
Medezinski, E., Umetsu, K., Nonino, M., et al. 2013, *ApJ*, 777, 43
Meneghetti, M., Rasia, E., Merten, J., et al. 2010, *A&A*, 514, A93
Merten, J., Cacciato, M., Meneghetti, M., Mignone, C., & Bartelmann, M. 2009, *A&A*, 500, 681
Merten, J., Coe, D., Dupke, R., et al. 2011, *MNRAS*, 417, 333
Nordsieck, K. 2012, in *American Institute of Physics Conference Series*, Vol. 1429, *American Institute of Physics Conference Series*, ed. J. L. Hoffman, J. Bjorkman, & B. Whitney, 248–251
Oguri, M., & Kawano, Y. 2003, *MNRAS*, 338, L25
Oguri, M., & Marshall, P. J. 2010, *MNRAS*, 405, 2579
Oguri, M., Suto, Y., & Turner, E. L. 2003, *ApJ*, 583, 584
Östman, L., Nordin, J., Goobar, A., et al. 2011, *A&A*, 526, A28
Perlmutter, S., Aldering, G., Goldhaber, G., et al. 1999, *ApJ*, 517, 565
Pogge, R. W., Atwood, B., Brewer, D. F., et al. 2010, in *Society of Photo-Optical Instrumentation Engineers (SPIE) Conference Series*, Vol. 7735, *Society of Photo-Optical Instrumentation Engineers (SPIE) Conference Series*
Postman, M., Coe, D., Benítez, N., et al. 2012, *ApJS*, 199, 25
Quimby, R. M., Werner, M. C., Oguri, M., et al. 2013, *ApJ*, 768, L20
Refsdal, S. 1964, *MNRAS*, 128, 307
Rest, A., Scolnic, D., Foley, R. J., et al. 2013, *ArXiv e-prints*, arXiv:1310.3828
Riehm, T., Mörtzell, E., Goobar, A., et al. 2011, *A&A*, 536, A94
Riess, A. G., Filippenko, A. V., Challis, P., et al. 1998, *AJ*, 116, 1009
Riess, A. G., Nugent, P. E., Gilliland, R. L., et al. 2001, *ApJ*, 560, 49
Riess, A. G., Strolger, L.-G., Casertano, S., et al. 2007, *ApJ*, 659, 98
Rodney, S. A., Riess, A. G., Dahlen, T., et al. 2012, *ApJ*, 746, 5
Rodney, S. A., Riess, A. G., Strolger, L.-G., et al. 2013, *ApJ*, submitted
Rubin, D., Knop, R. A., Rykoff, E., et al. 2013, *ApJ*, 763, 35
Sako, M., Bassett, B., Becker, A., et al. 2008, *AJ*, 135, 348
Sako, M., Bassett, B., Connolly, B., et al. 2011, *ApJ*, 738, 162
Sako, M., Bassett, B., Becker, A. C., et al. 2014, *ArXiv e-prints*, arXiv:1401.3317
Schwab, J., Bolton, A. S., & Rappaport, S. A. 2010, *ApJ*, 708, 750
Smith, M., Bacon, D. J., Nichol, R. C., et al. 2013, *ArXiv e-prints*, arXiv:1307.2566
Stanishev, V., Goobar, A., Paech, K., et al. 2009, *A&A*, 507, 61
Sullivan, M., Ellis, R., Nugent, P., Smail, I., & Madau, P. 2000, *MNRAS*, 319, 549
Sullivan, M., Guy, J., Conley, A., et al. 2011, *ApJ*, 737, 102
Suzuki, N., Rubin, D., Lidman, C., et al. 2012, *ApJ*, 746, 85
Umetsu, K., Medezinski, E., Nonino, M., et al. 2012, *ApJ*, 755, 56
Wood-Vasey, W. M., Miknaitis, G., Stubbs, C. W., et al. 2007, *ApJ*, 666, 694
Zitrin, A., Redlich, M., & Broadhurst, T. 2013, *ArXiv e-prints*, arXiv:1311.5224
Zitrin, A., Broadhurst, T., Umetsu, K., et al. 2009, *MNRAS*, 396, 1985
Zitrin, A., Broadhurst, T., Coe, D., et al. 2011, *ApJ*, 742, 117

TABLE 1
SN CLO12CAR PHOTOMETRY

UT Date	MJD	Instrument	Filter	Exposure Time (s)	Magnitude
2012 May 05	56052.58	ACS	F850LP	991.0	> 25.546
2012 May 05	56052.64	WFC3/IR	F160W	1408.8	> 25.347
2012 May 09	56056.02	WFC3/IR	F105W	1408.8	> 26.016
2012 May 09	56056.04	WFC3/IR	F140W	1005.9	> 25.808
2012 May 22	56069.68	ACS	F814W	1007.0	> 26.666
2012 Jun. 17	56095.66	ACS	F850LP	1032.0	24.597 ± 0.130
2012 Jun. 17	56095.68	ACS	F814W	975.0	25.148 ± 0.082
2012 Jun. 17	56095.73	WFC3/IR	F160W	1408.8	23.451 ± 0.050
2012 Jun. 17	56095.75	WFC3/IR	F110W	1005.9	23.856 ± 0.024
2012 Jul. 02	56110.09	WFC3/IR	F105W	1005.9	23.750 ± 0.042
2012 Jul. 02	56110.15	WFC3/IR	F140W	1005.9	23.271 ± 0.025
2012 Jul. 16	56124.09	WFC3/IR	F105W	1005.9	23.791 ± 0.054
2012 Jul. 16	56124.15	WFC3/IR	F140W	1005.9	23.250 ± 0.025
2012 Jul. 23	56131.31	WFC3/IR	F160W	455.9	23.340 ± 0.063
2012 Jul. 23	56131.38	WFC3/IR	F105W	455.9	24.138 ± 0.056

NOTE. — All supernova photometry is reported in Vega magnitudes. The nondetections are reported as 3σ upper limits.

TABLE 2
SN CLN12DID PHOTOMETRY

UT Date	MJD	Instrument	Filter	Exposure Time (s)	Magnitude
2012 Feb. 03	55960.64	ACS	F625W	1032.0	26.699 ± 0.171
2012 Feb. 03	55960.65	ACS	F850LP	1017.0	25.066 ± 0.150
2012 Feb. 18	55975.67	ACS	F775W	1032.0	23.041 ± 0.016
2012 Feb. 18	55975.69	ACS	F606W	998.0	24.186 ± 0.017
2012 Mar. 03	55989.84	ACS	F814W	1032.0	23.175 ± 0.015
2012 Mar. 03	55989.86	ACS	F435W	1018.0	> 28.560
2012 Mar. 03	55990.24	ACS	F625W	1032.0	24.182 ± 0.023
2012 Mar. 03	55990.25	ACS	F850LP	1017.0	22.929 ± 0.026
2012 Mar. 03	55990.31	ACS	F475W	1032.0	27.057 ± 0.138
2012 Mar. 03	55990.32	ACS	F775W	1013.0	23.034 ± 0.016
2012 Mar. 03	55990.37	WFC3/IR	F110W	1508.8	22.915 ± 0.013
2012 Mar. 03	55990.39	WFC3/IR	F160W	1005.9	23.041 ± 0.041
2012 Mar. 16	56002.61	ACS	F606W	1032.0	25.491 ± 0.038
2012 Mar. 16	56002.62	ACS	F814W	984.0	23.410 ± 0.018
2012 Mar. 16	56002.67	WFC3/IR	F105W	1305.9	23.138 ± 0.019
2012 Mar. 16	56002.69	WFC3/IR	F140W	1305.9	23.540 ± 0.034
2012 Mar. 18	56004.74	ACS	F475W	1032.0	> 28.924
2012 Mar. 18	56004.75	ACS	F850LP	1001.0	23.359 ± 0.037
2012 Mar. 29	56015.52	ACS	F435W	1032.0	> 28.625
2012 Mar. 29	56015.53	ACS	F814W	1017.0	24.148 ± 0.029
2012 Apr. 12	56029.62	ACS	F850LP	1032.0	24.448 ± 0.079
2012 Apr. 12	56029.63	ACS	F814W	985.0	25.072 ± 0.058
2012 Apr. 12	56029.68	WFC3/IR	F160W	1508.8	23.316 ± 0.038
2012 Apr. 12	56029.70	WFC3/IR	F110W	1005.9	23.853 ± 0.038

NOTE. — All SN photometry is reported in Vega magnitudes. The nondetections are listed as 3σ upper limits.

TABLE 3
SN CLA11Tib PHOTOMETRY

UT Date	MJD	Instrument	Filter	Exposure Time (s)	Magnitude
2010 Nov. 18	55518.91	ACS	F625W	1032.0	> 27.206
2010 Nov. 18	55518.92	ACS	F850LP	1014.0	> 25.768
2010 Nov. 18	55518.99	ACS	F775W	1010.0	> 26.792
2010 Dec. 08	55538.41	ACS	F850LP	1032.0	> 25.802
2010 Dec. 08	55538.43	ACS	F814W	1060.0	> 26.872
2010 Dec. 28	55558.45	ACS	F435W	1032.0	> 27.385
2010 Dec. 28	55558.46	ACS	F814W	1092.0	24.699 ± 0.049
2011 Jan. 04	55565.97	ACS	F625W	1032.0	25.349 ± 0.074
2011 Jan. 04	55565.98	ACS	F850LP	1092.0	24.251 ± 0.091
2011 Jan. 18	55579.35	ACS	F606W	1032.0	26.364 ± 0.104
2011 Jan. 18	55579.36	ACS	F814W	1059.0	24.394 ± 0.038
2011 Jan. 22	55583.41	ACS	F775W	1032.0	24.762 ± 0.066
2011 Jan. 22	55583.43	ACS	F606W	1073.0	26.551 ± 0.127
2011 Jan. 24	55585.08	WFC3/IR	F105W	806.0	23.755 ± 0.037
2011 Jan. 24	55585.09	WFC3/IR	F125W	806.0	23.402 ± 0.036
2011 Jan. 24	55585.14	WFC3/IR	F160W	906.0	23.357 ± 0.059
2011 Feb. 07	55599.38	ACS	F814W	1032.0	25.082 ± 0.076
2011 Feb. 07	55599.40	ACS	F435W	1093.0	> 27.336
2011 Feb. 21	55613.16	ACS	F850LP	1994.0	25.247 ± 0.188
2011 Mar. 01	55621.43	ACS	F850LP	1076.0	> 25.677

NOTE. — All SN photometry is reported in Vega magnitudes. The nondetections are listed as 3σ upper limits. Dolphot was used to derive PSF photometry for the WFC3/IR observations (see text).

TABLE 4
COMPARING SN MAGNIFICATIONS WITH LENSING PREDICTIONS

SN name	Lensing from Light Curve Fits		
	Δm_μ (SALT2)	Δm_μ (MLCS22k)	Δm_μ (Lensing Maps)
SN CLO12Car	0.91 ± 0.25	1.06 ± 0.17	0.83 ± 0.16
SN CLN12Did	0.24 ± 0.15	0.15 ± 0.09	0.28 ± 0.08
SN CLA11Tib	0.43 ± 0.11

NOTE. — Comparison of lensing predictions from light curve fits and lensing maps for the three SNe. All of the Δm_μ table entries have units of magnitudes. For both SN CLO12Car and SN CLN12Did, there is good agreement (within 1σ) between both lensing methods. The classification of SN CLA11Tib was inconclusive, making it difficult to determine a magnification from the light curve (see §4.3).