

Figure S 1: Comparison of GRACE solutions at Point A (Nepal) and Point B (Bangladesh) (see figure 1) from the CSR, GFZ, JPL and GRGS processing. Differences between solutions remain within our estimated uncertainties.

SPECTRUM TRUNCATION ERRORS AT STATIONS

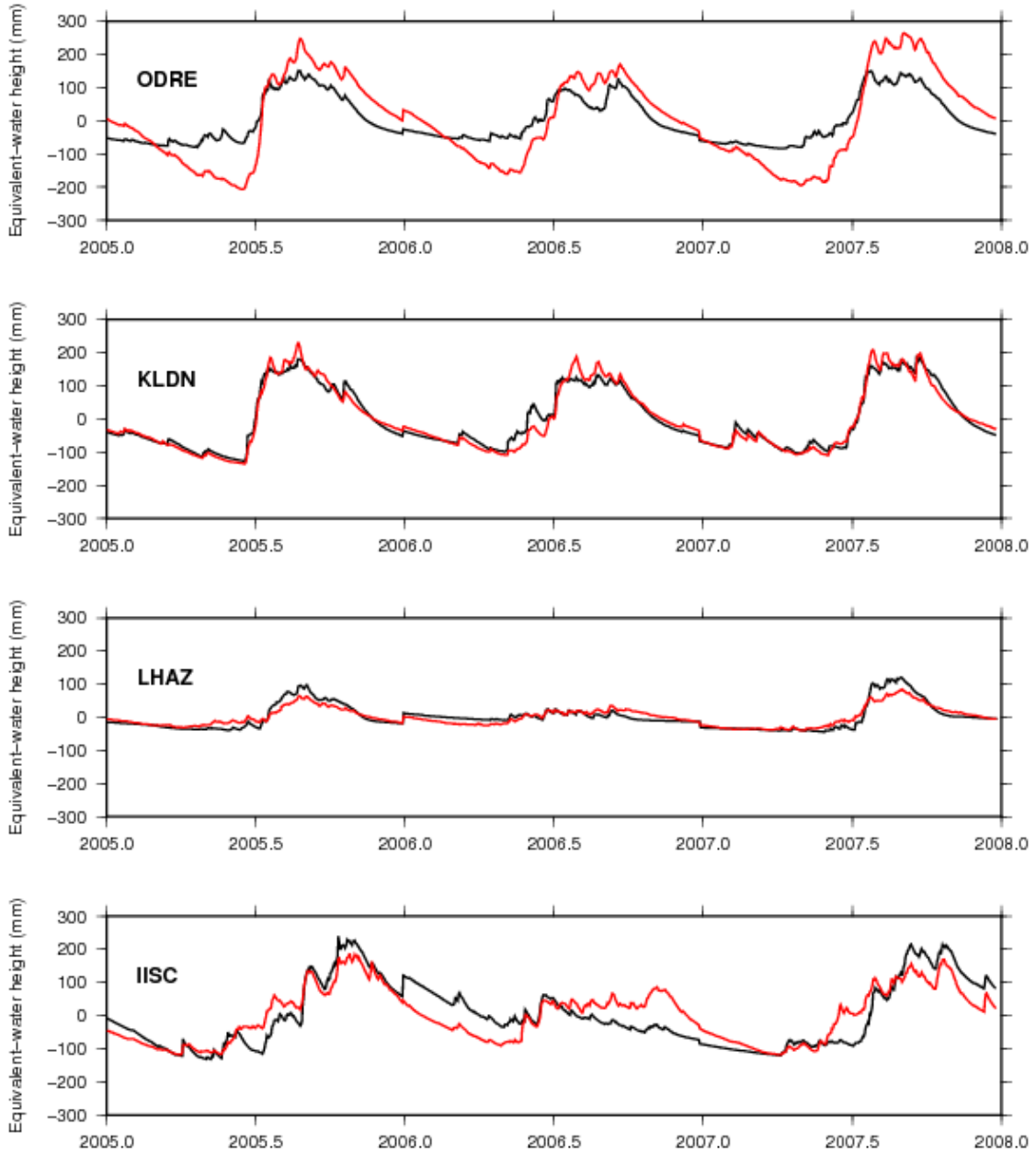


Figure S 2: Spectrum truncation errors for equivalent water height expressed in mm at GPS stations. Black solid lines are interpolation of WGHM at GPS stations and red solid lines represent the same model, truncated at degree 50 (resolution of GRACE)

SPECTRUM TRUNCATION ERRORS AT STATIONS

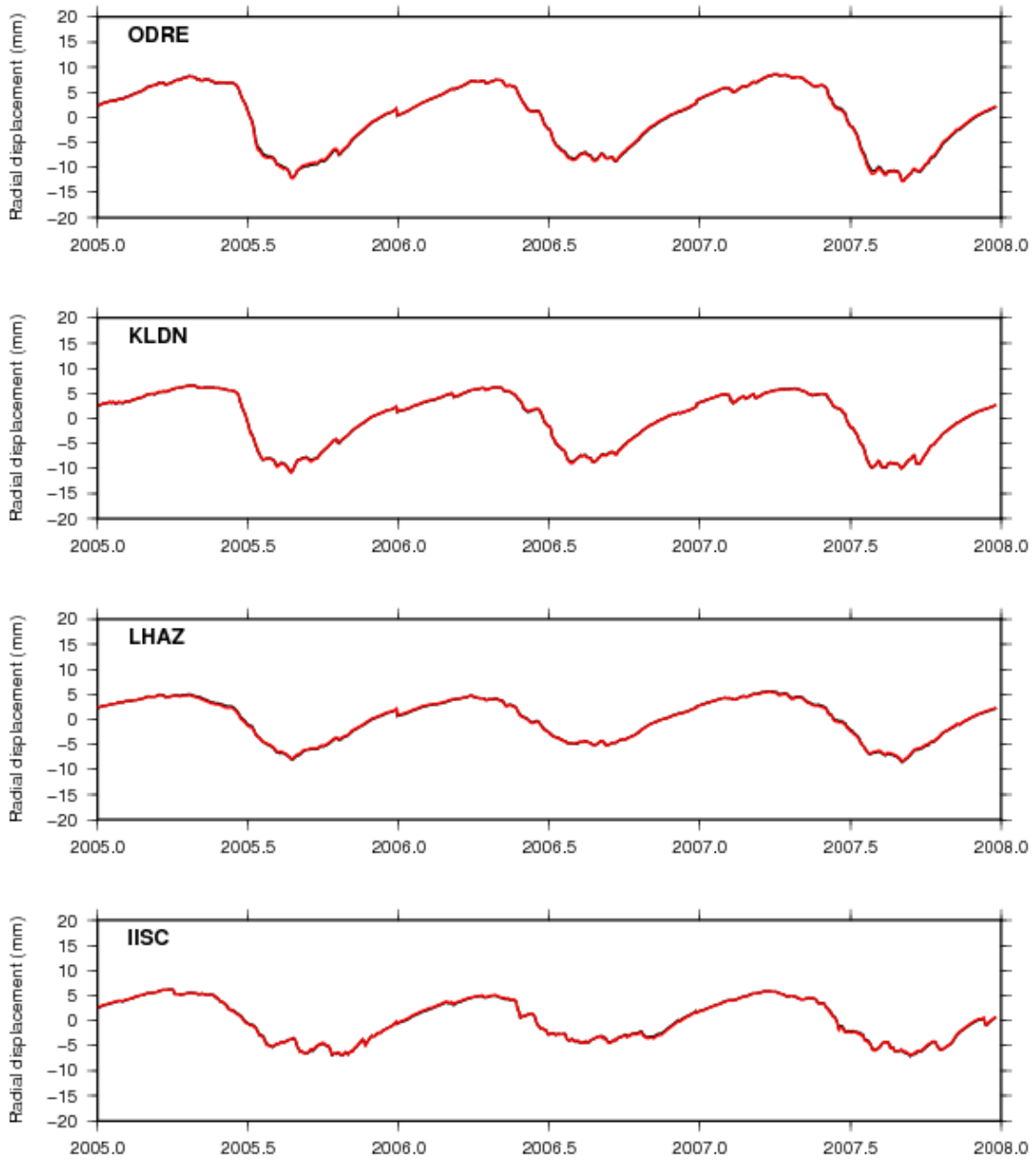


Figure S 3: Radial displacements computed at 4 GPS stations. The black lines show displacements induced by a load from the WGHM model while the red lines correspond to the displacements induced by the same model, truncated to harmonic degrees lower than 50.