

Figure 3: Sample VLT VIMOS spectra. In each figure key absorption and emission features of the corresponding template used to fit the spectrum are marked for reference.

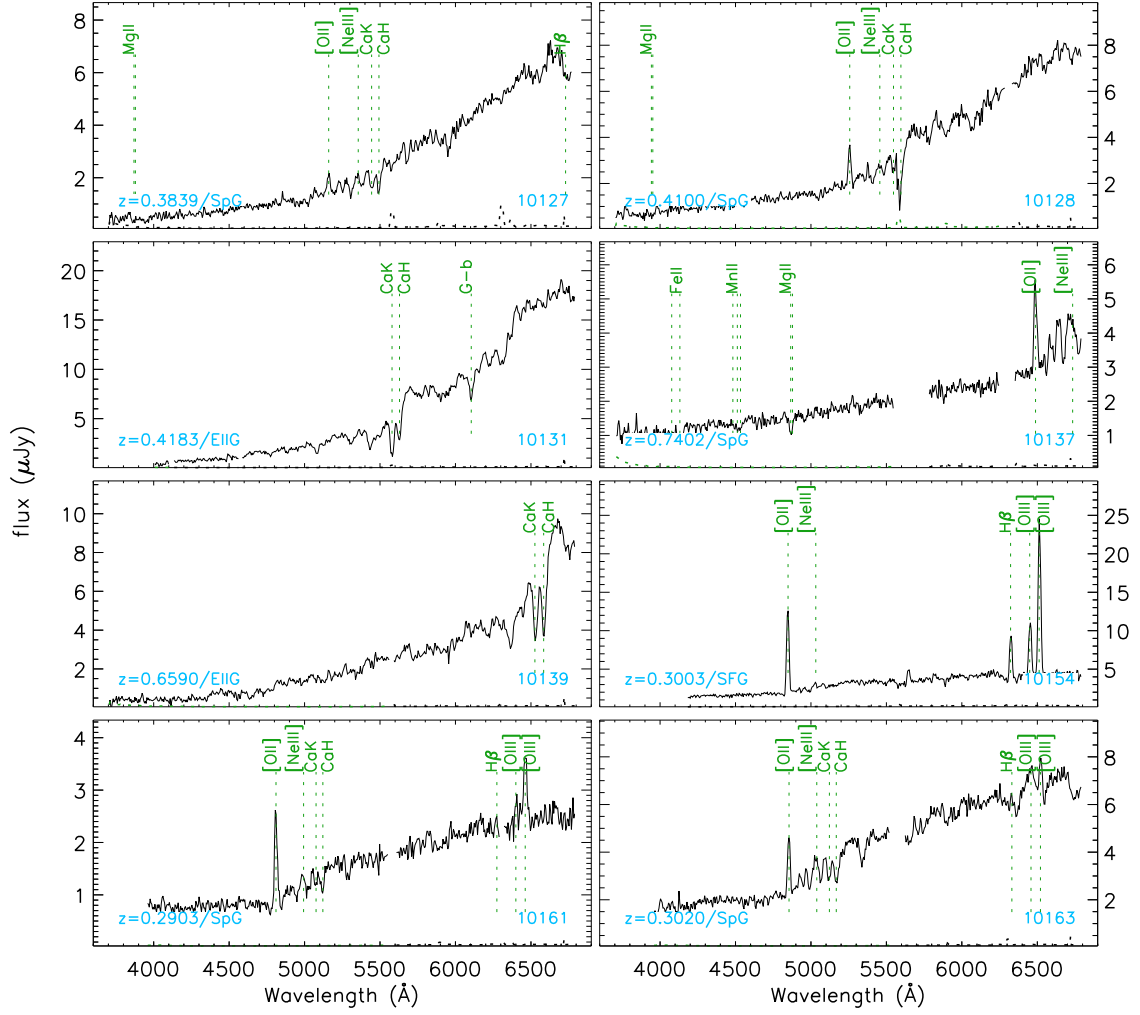


Figure 3 (continued)

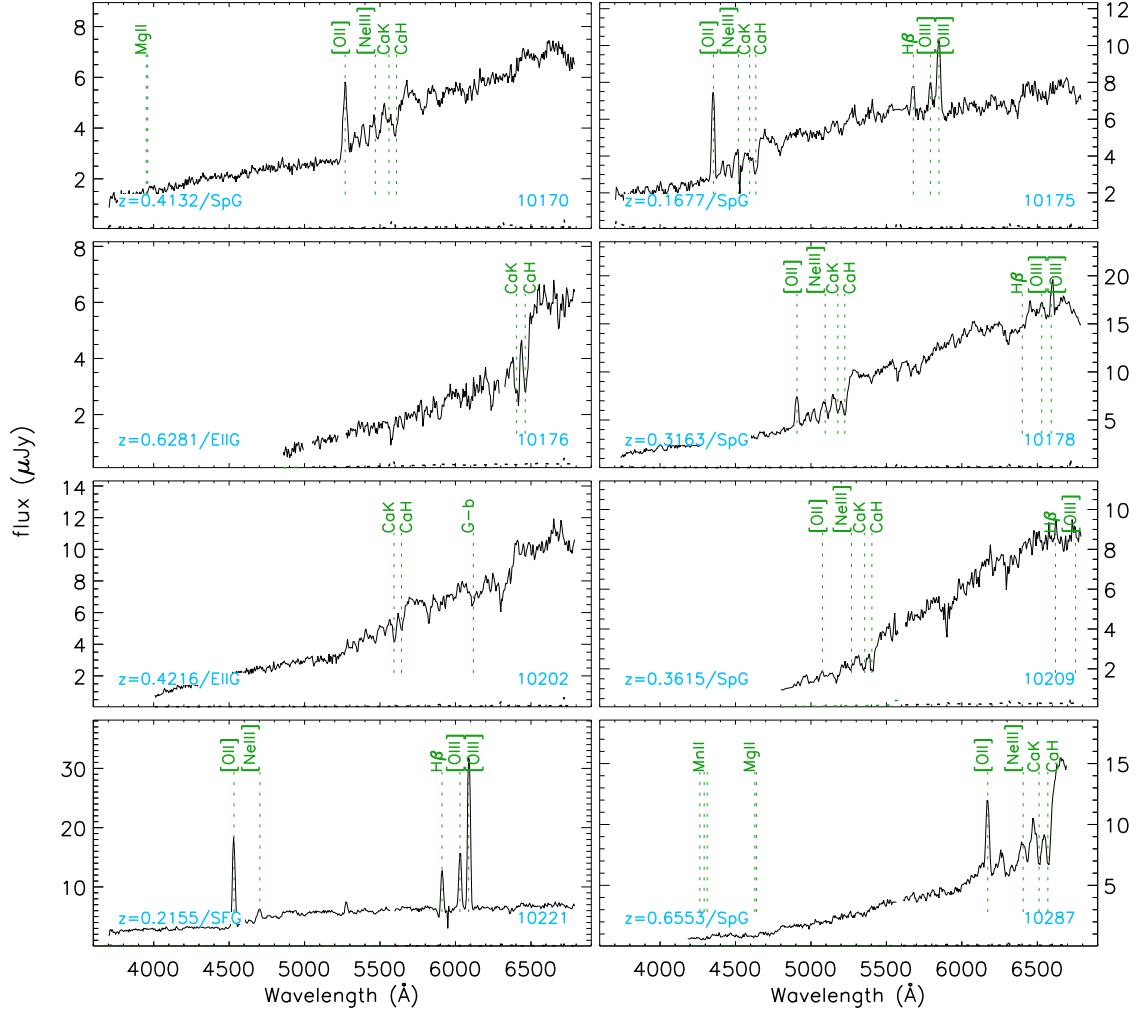


Figure 3 (continued)

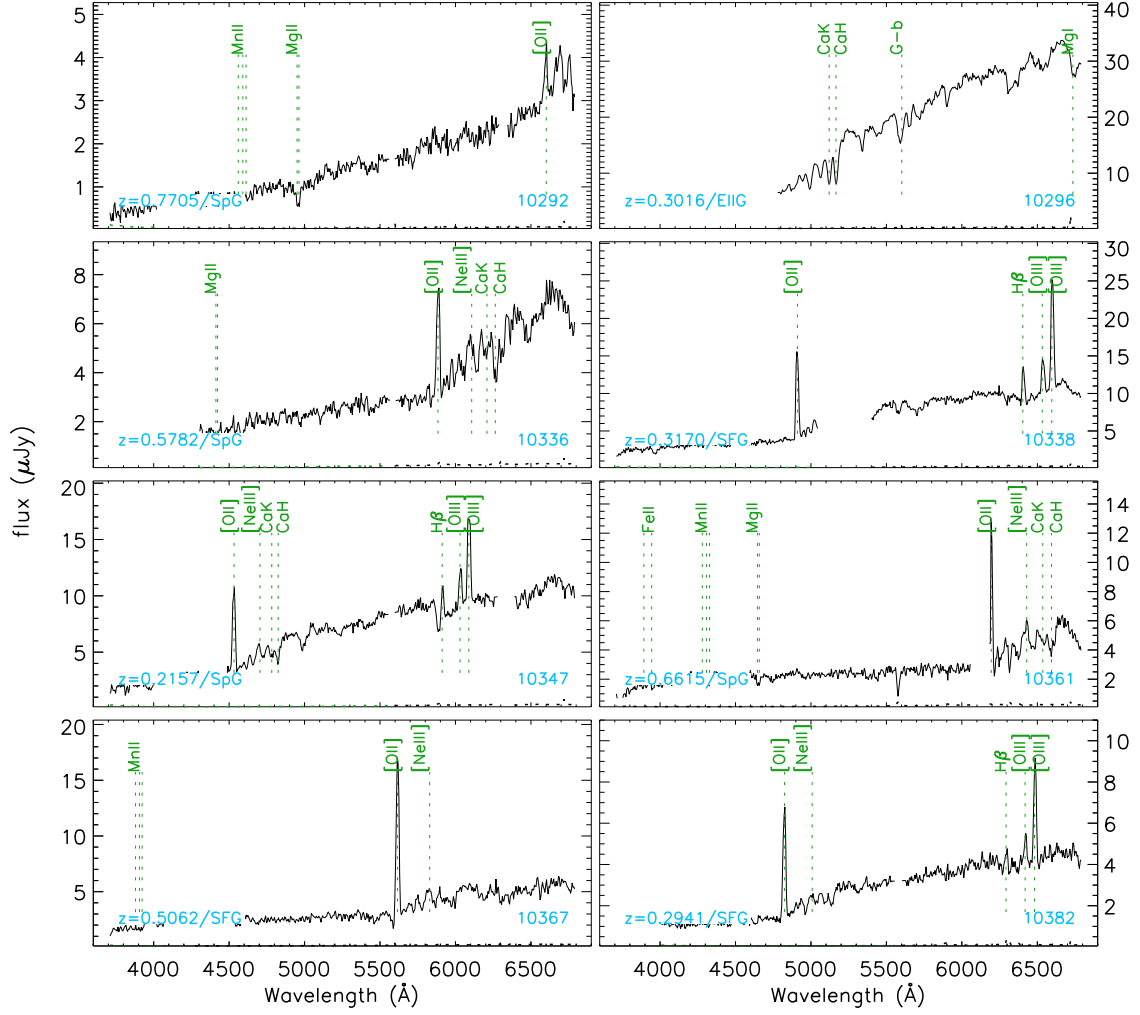


Figure 3 (continued)

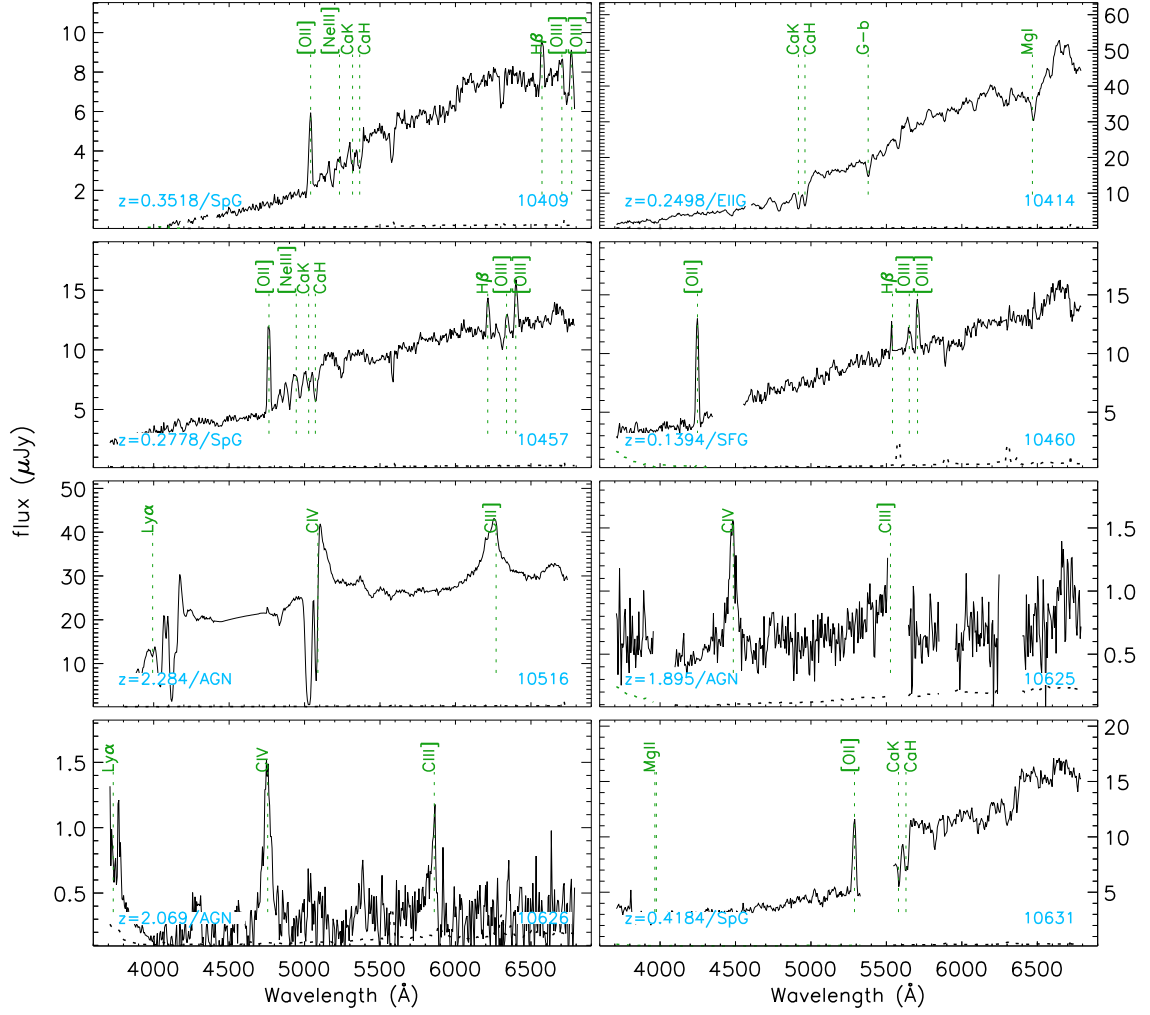


Figure 3 (continued)

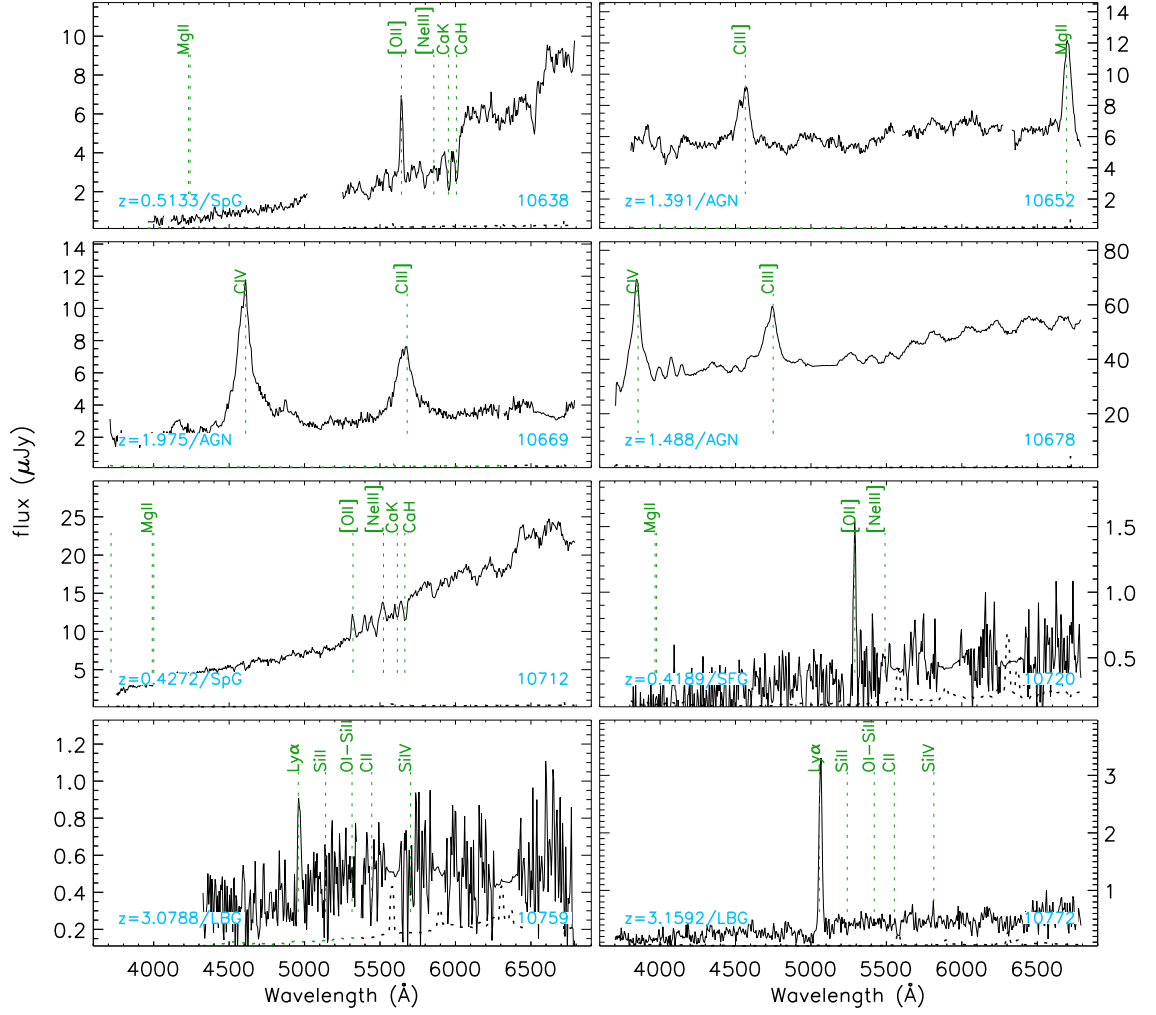


Figure 3 (continued)

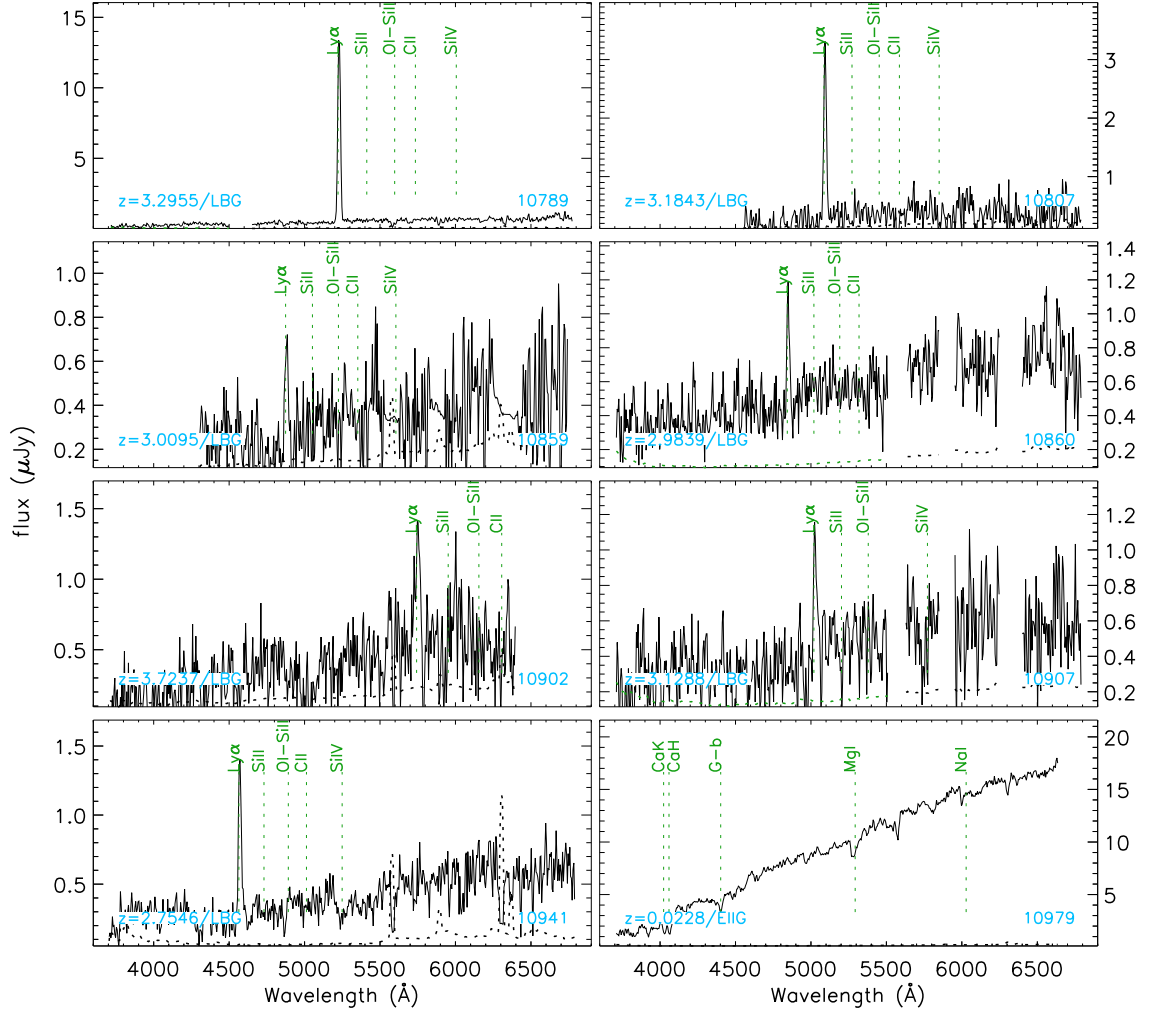


Figure 3 (continued)

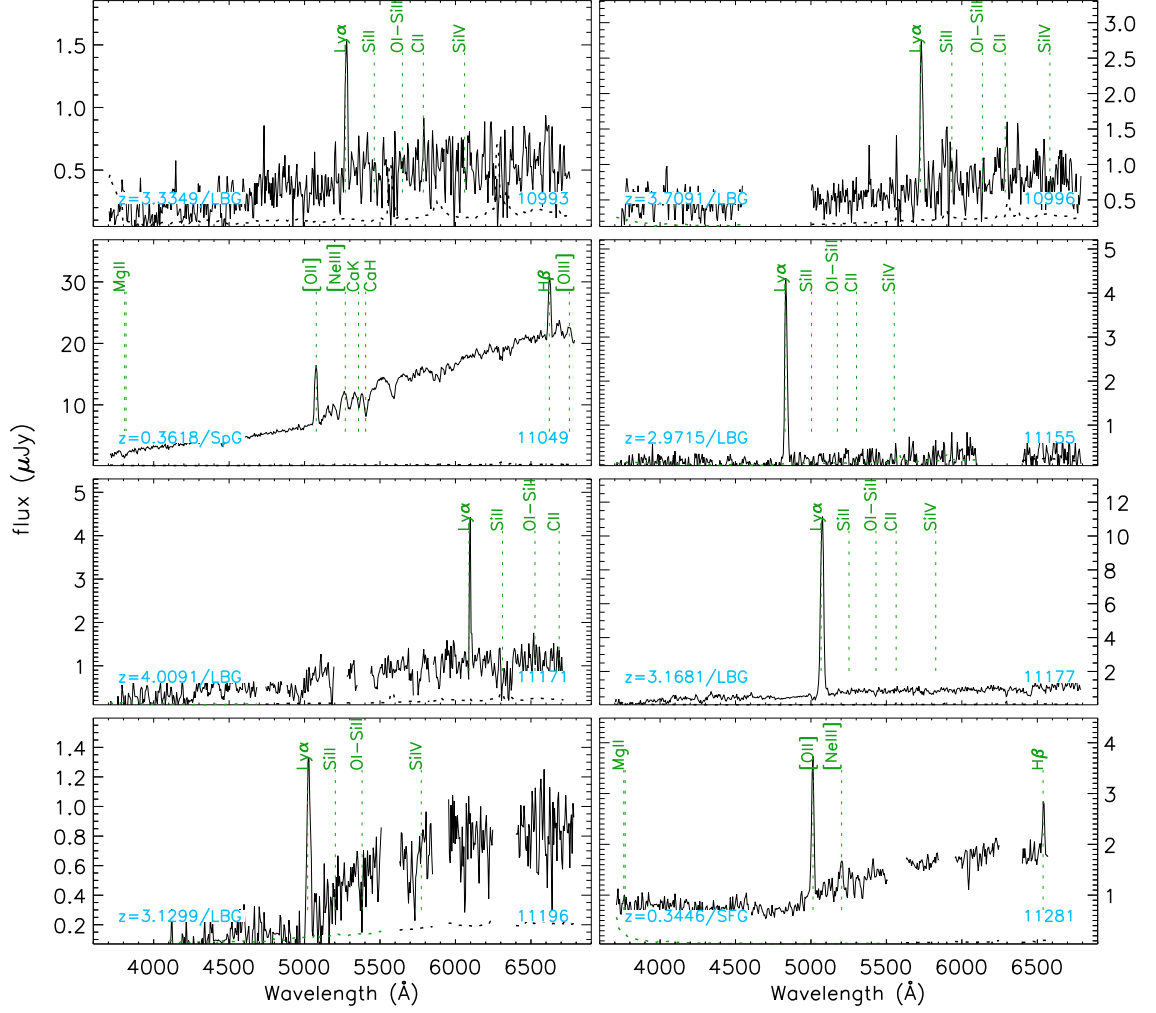


Figure 3 (continued)



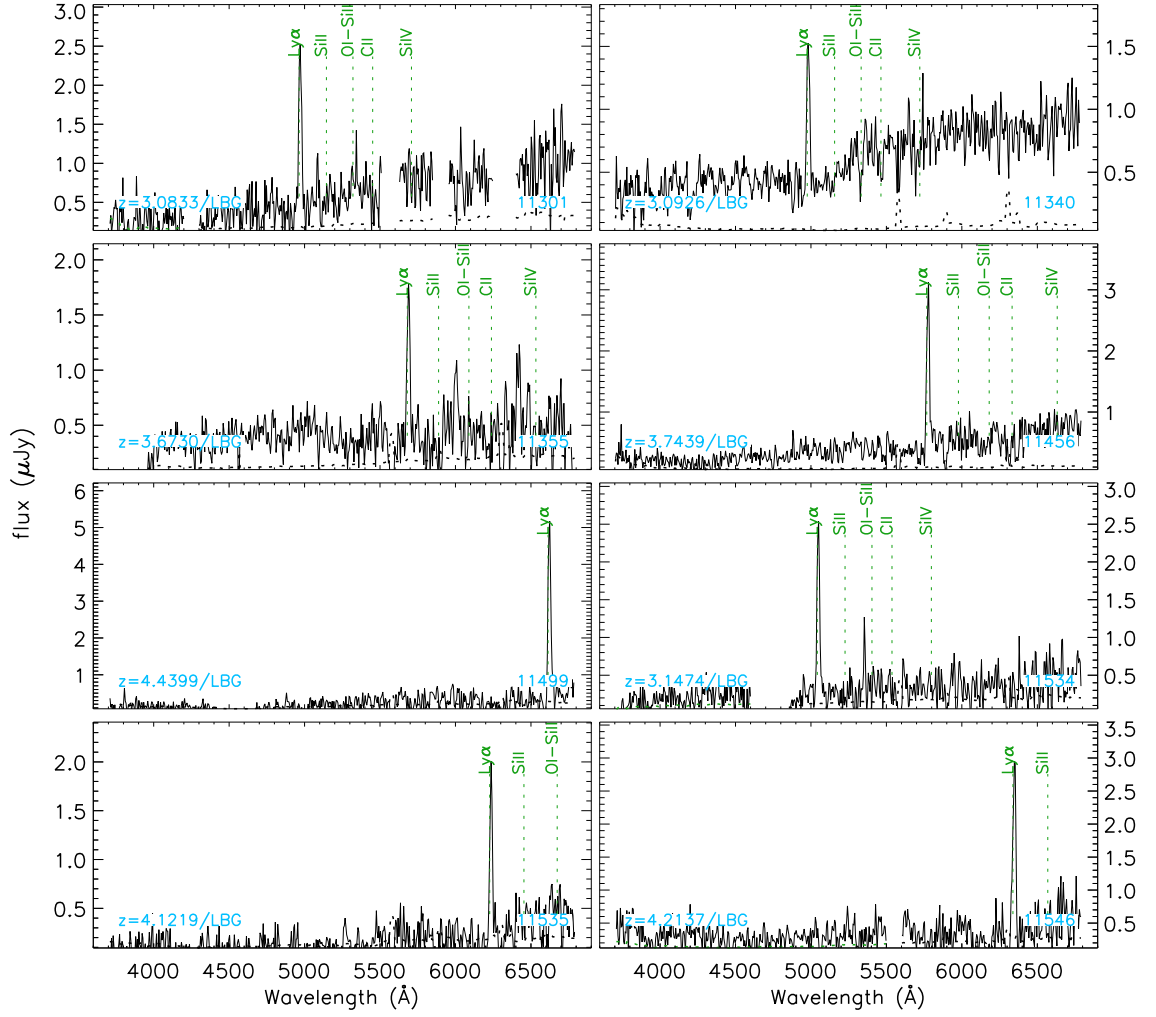


Figure 3 (continued)

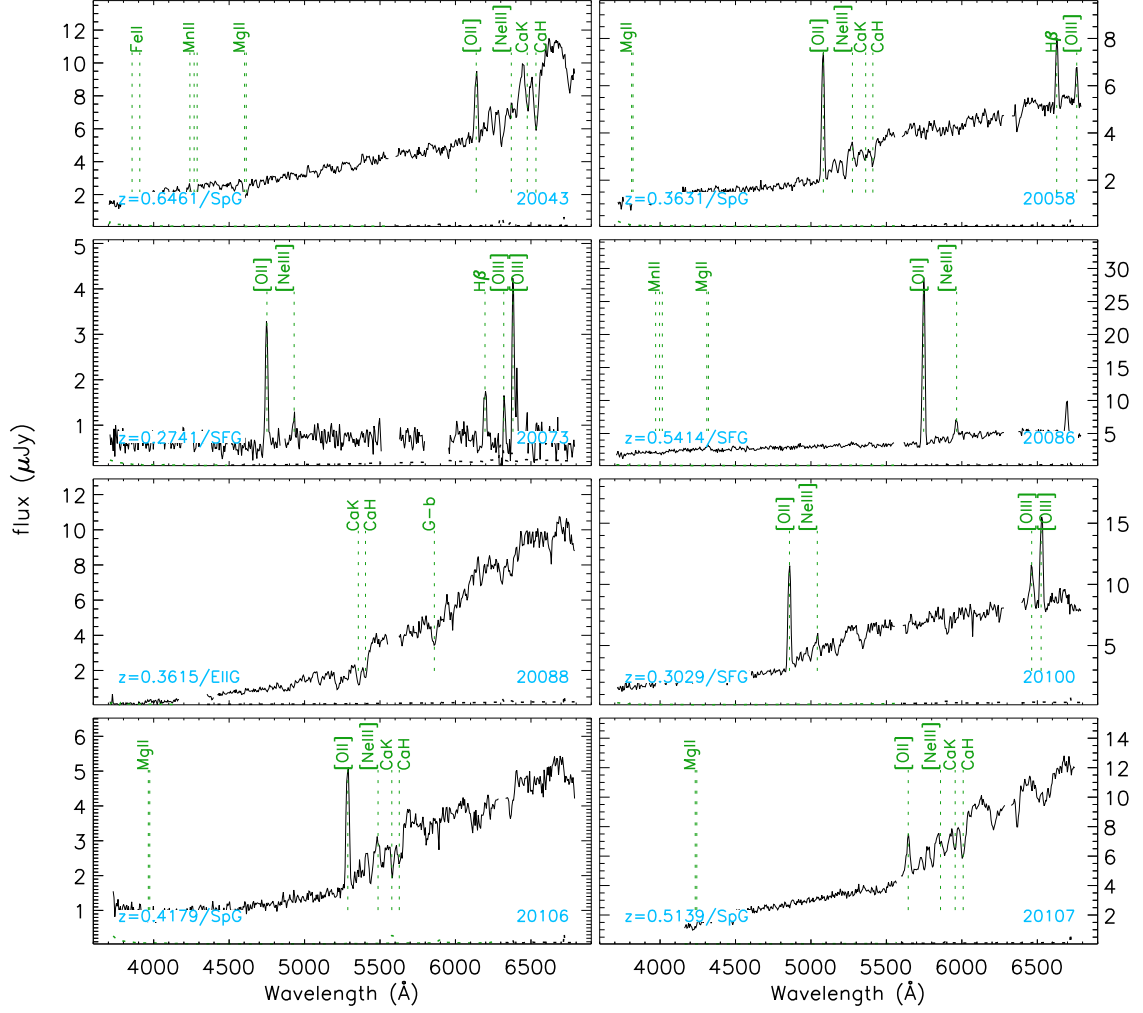


Figure 3 (continued)

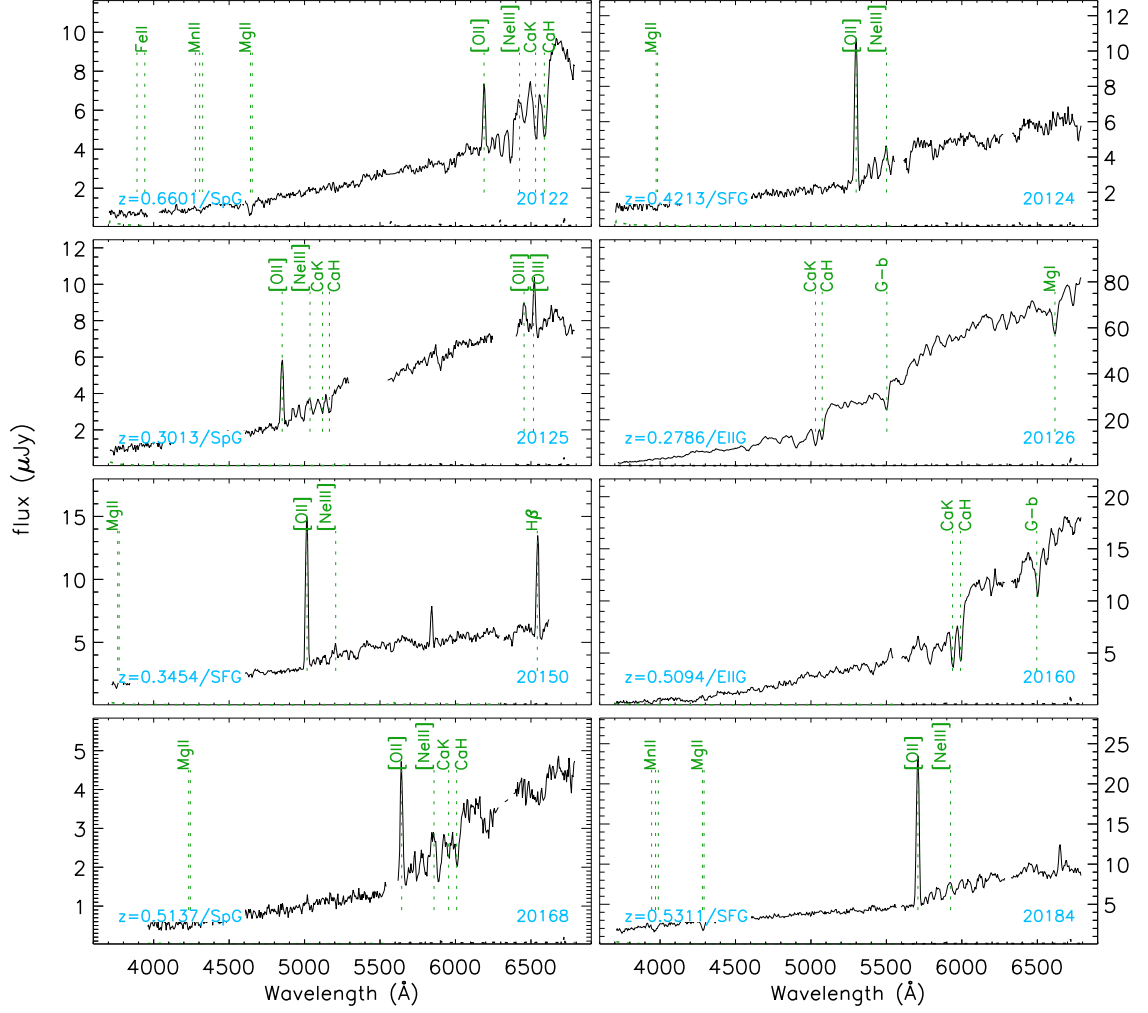


Figure 3 (continued)

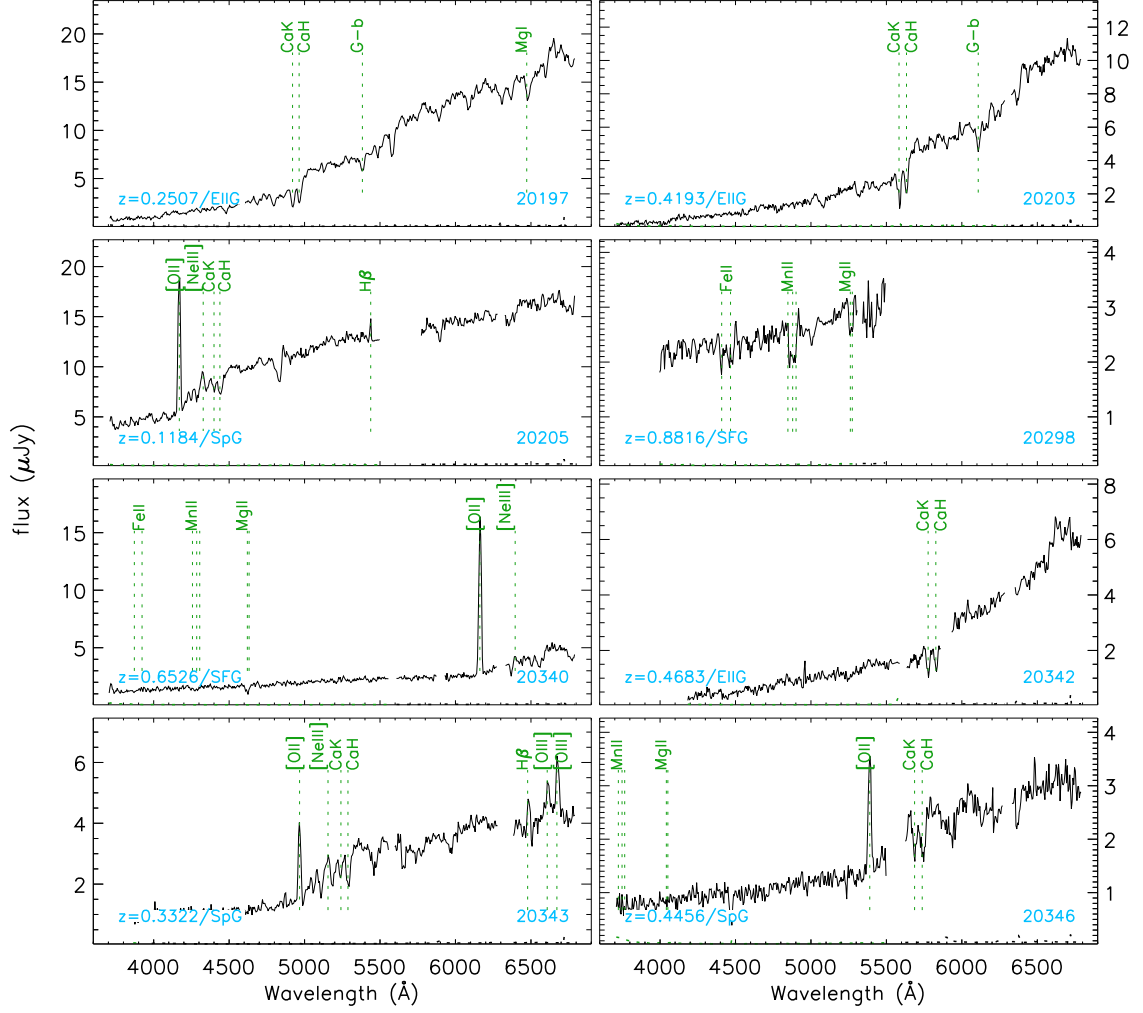


Figure 3 (continued)

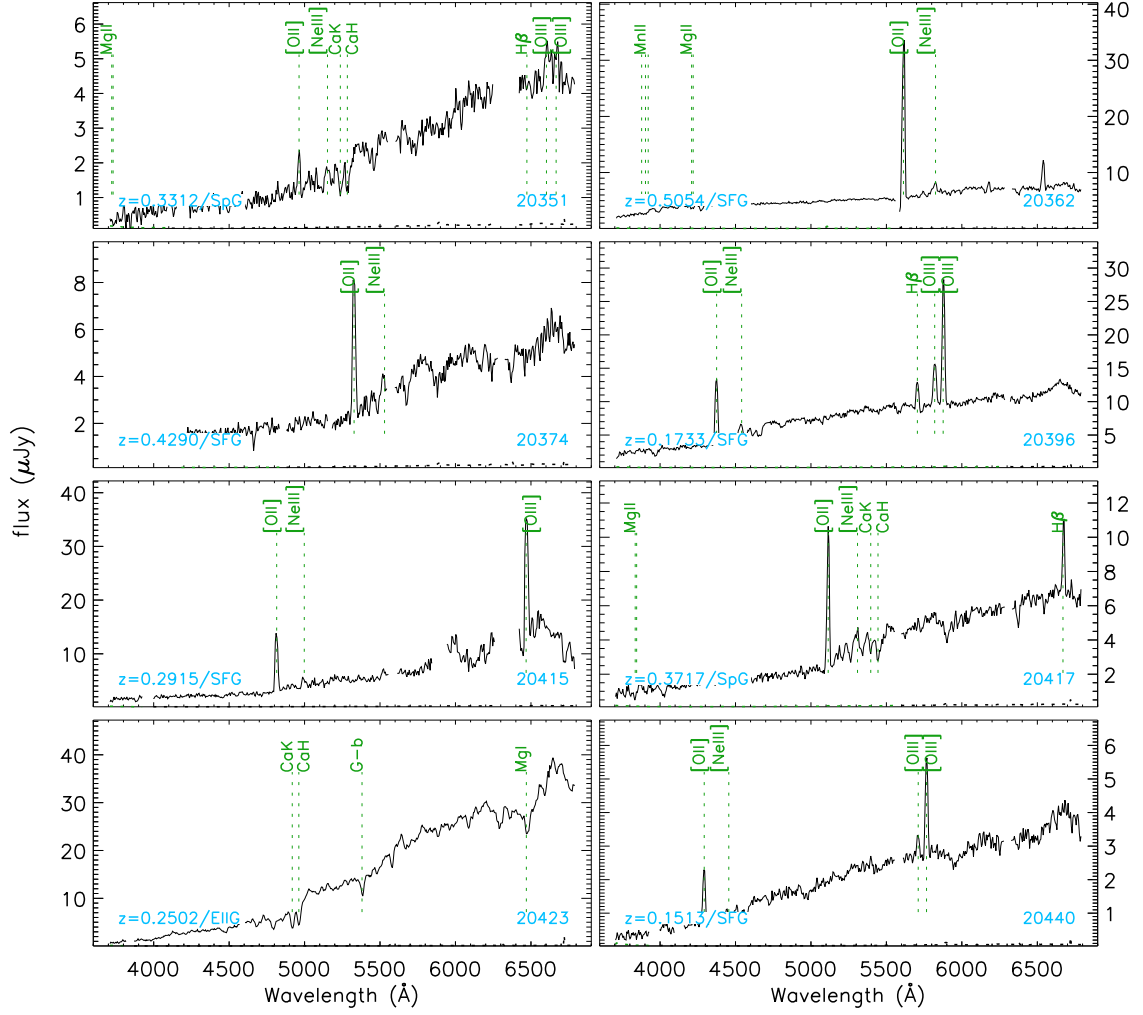


Figure 3 (continued)

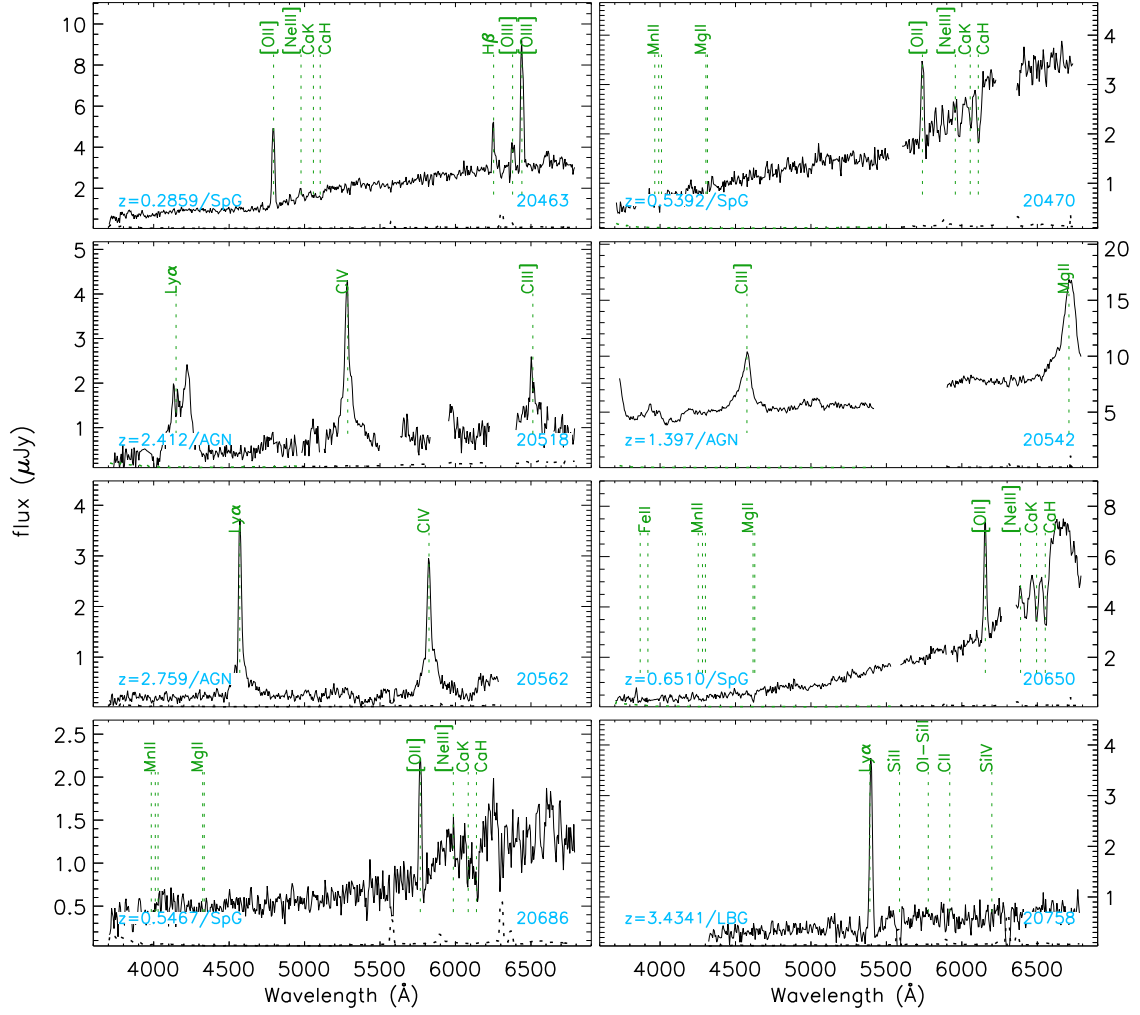


Figure 3 (continued)

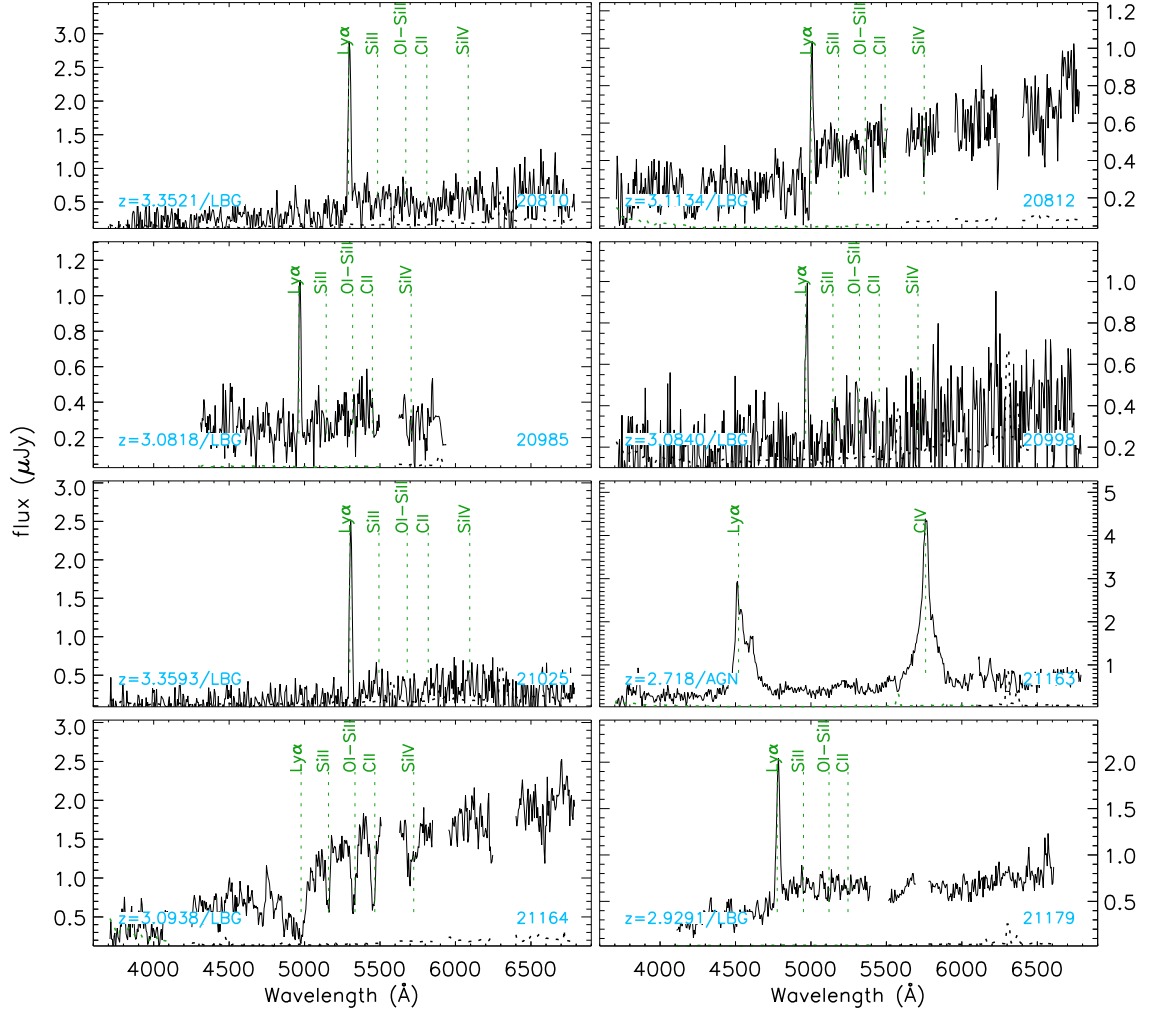


Figure 3 (continued)

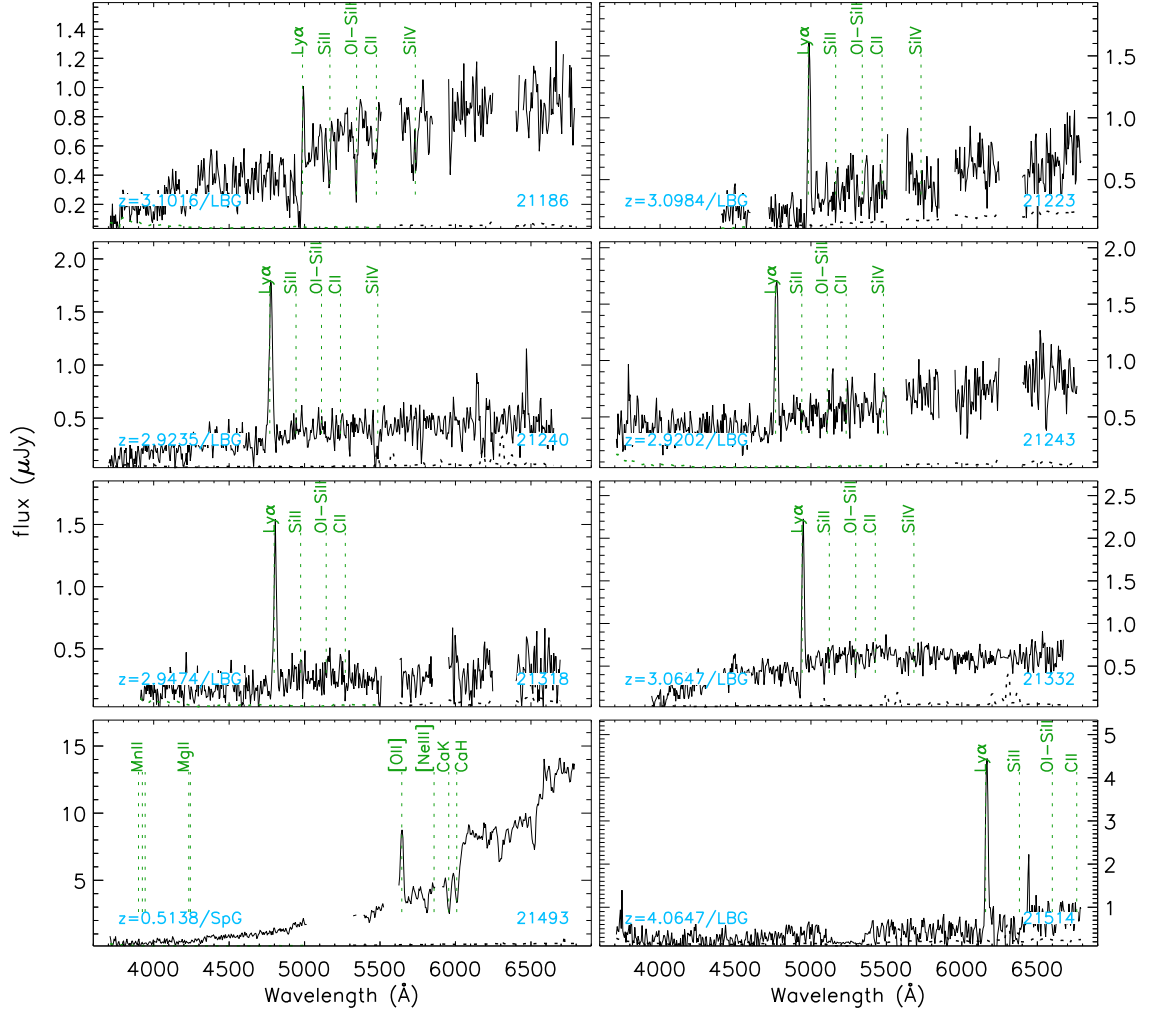


Figure 3 (continued)



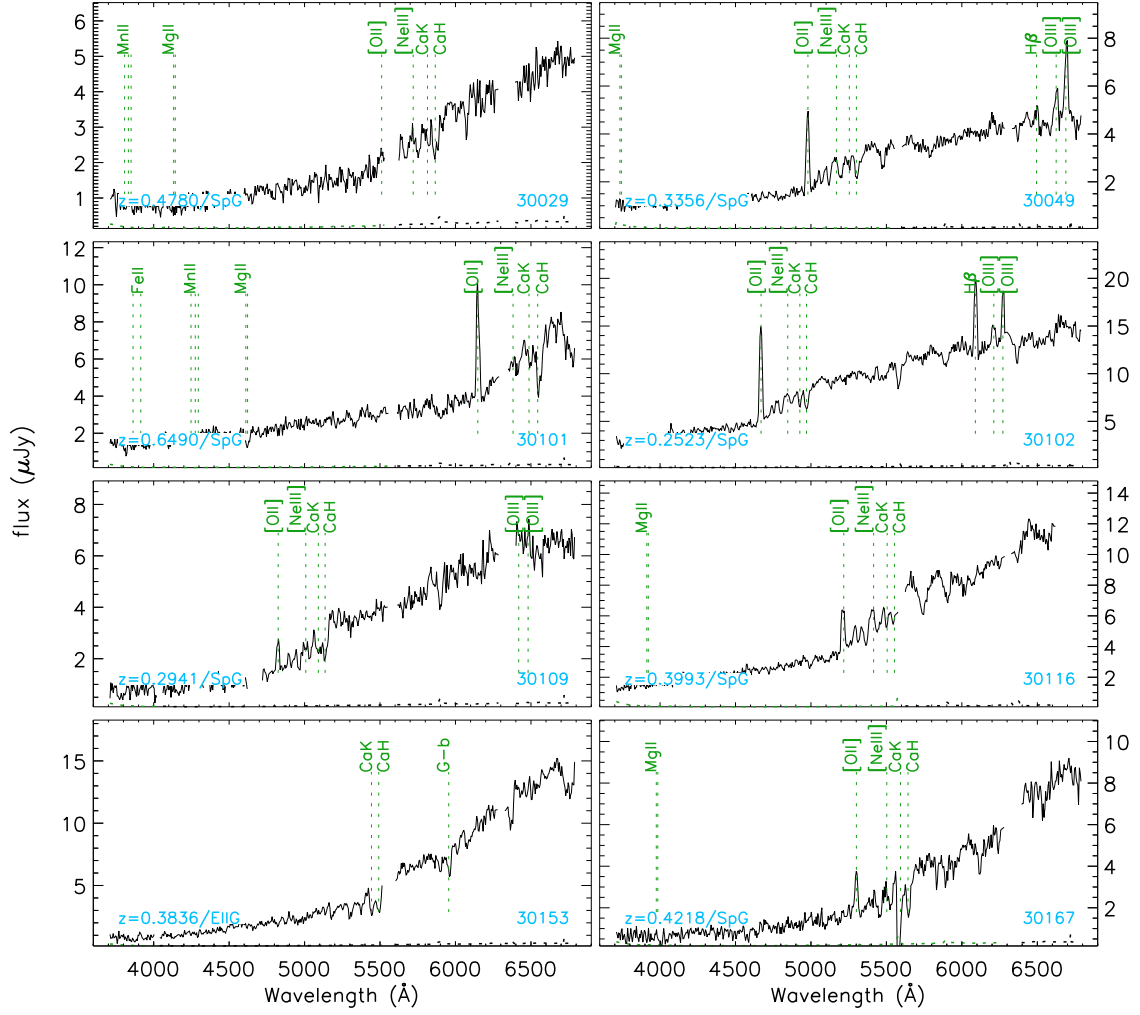


Figure 3 (continued)

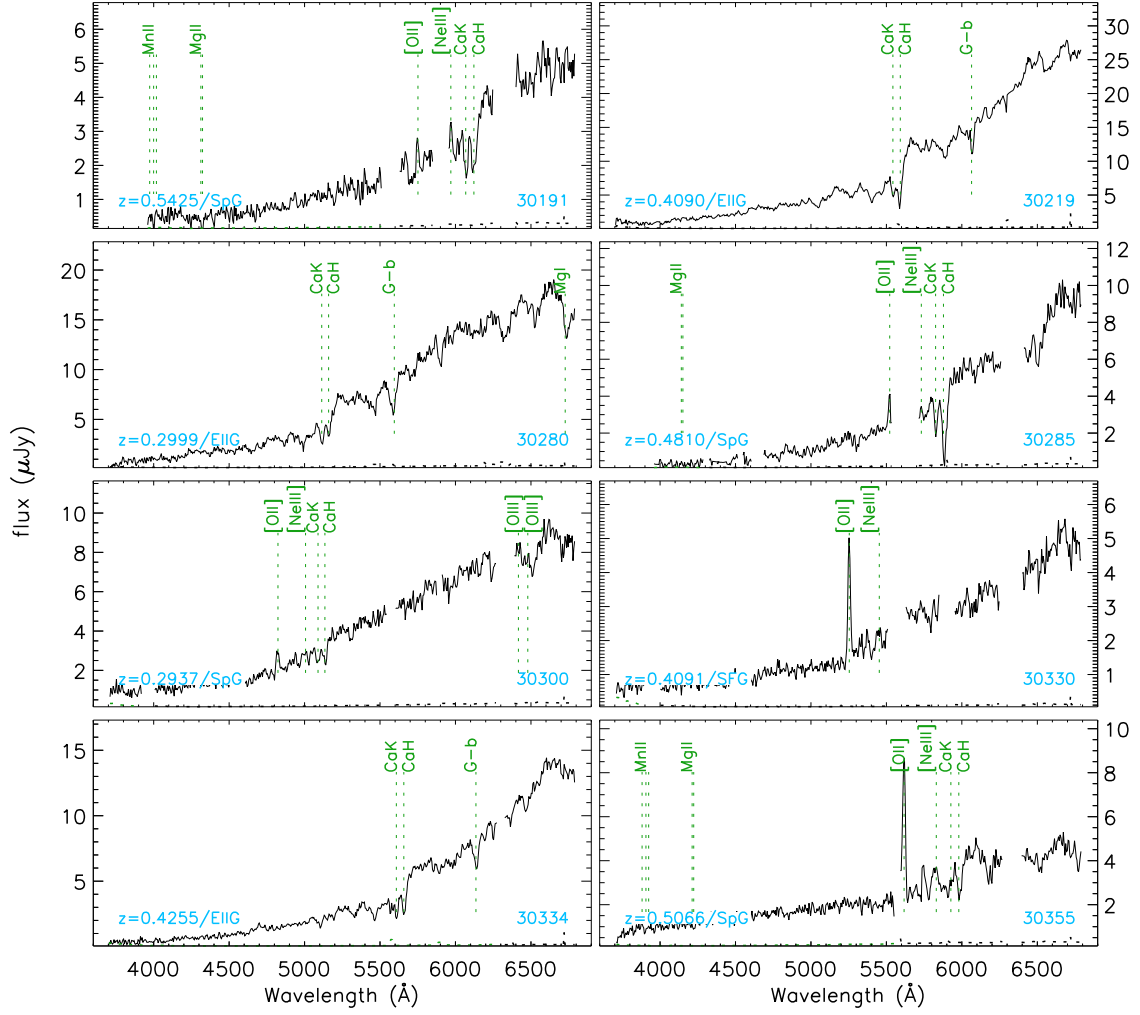


Figure 3 (continued)

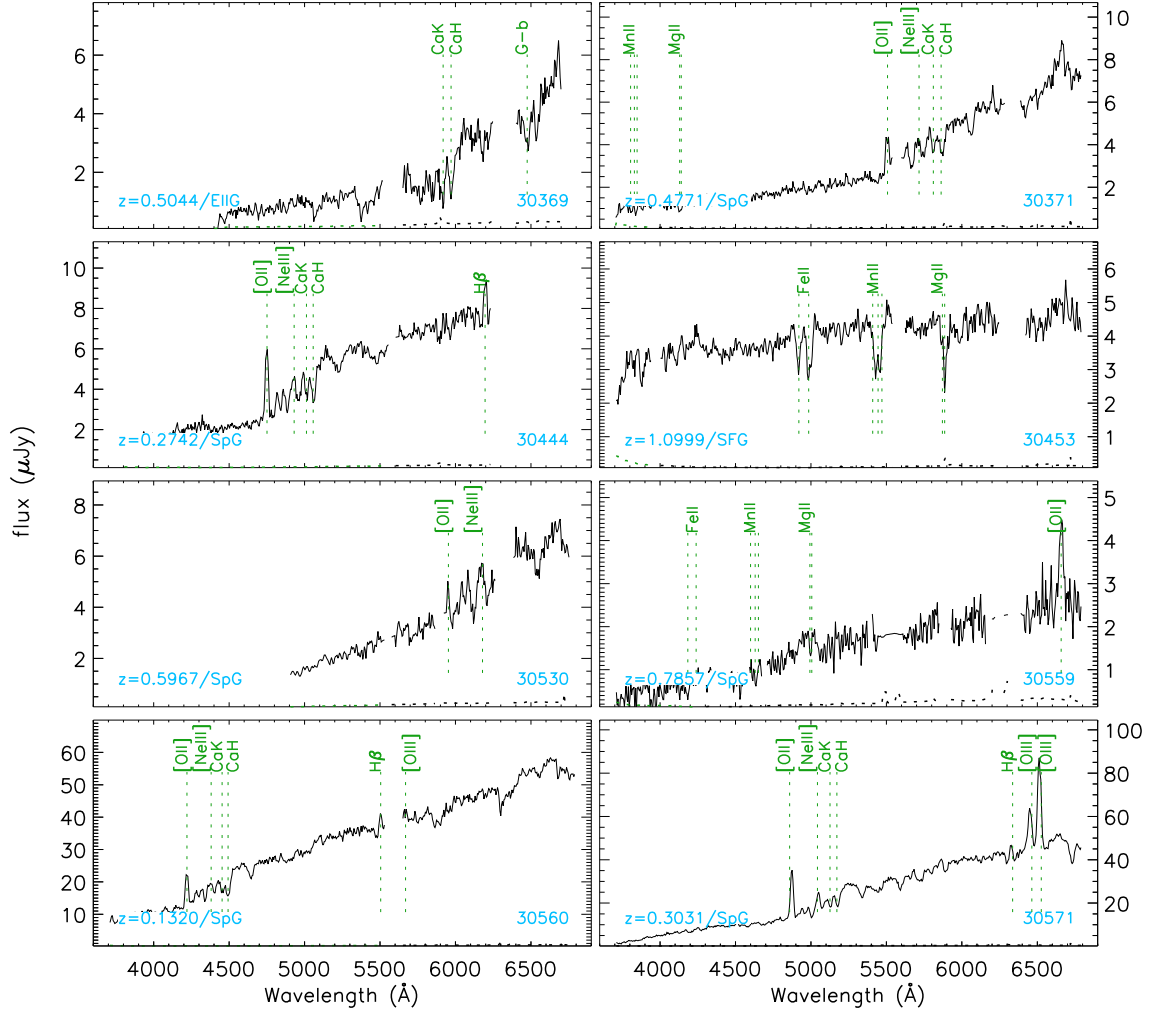


Figure 3 (continued)

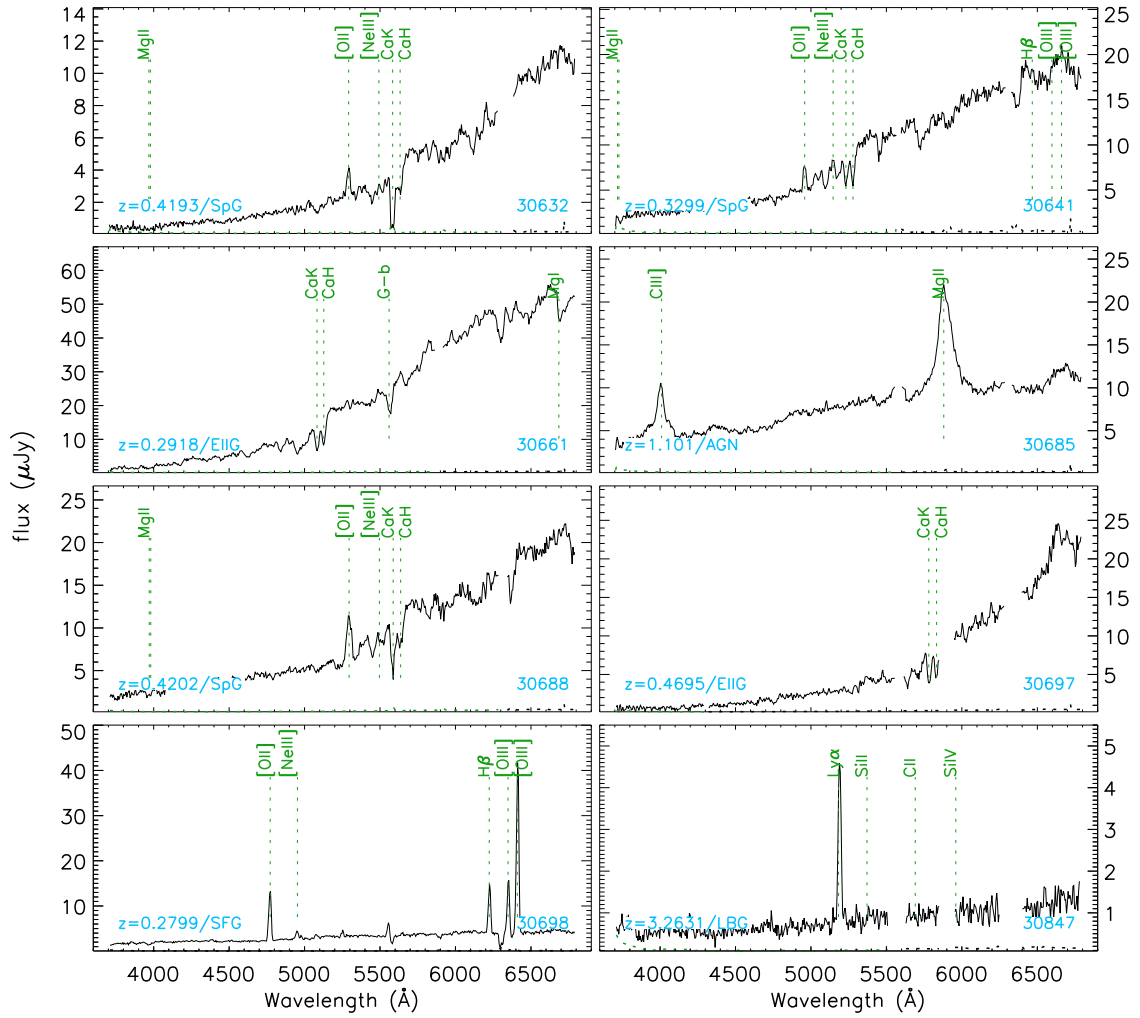


Figure 3 (continued)

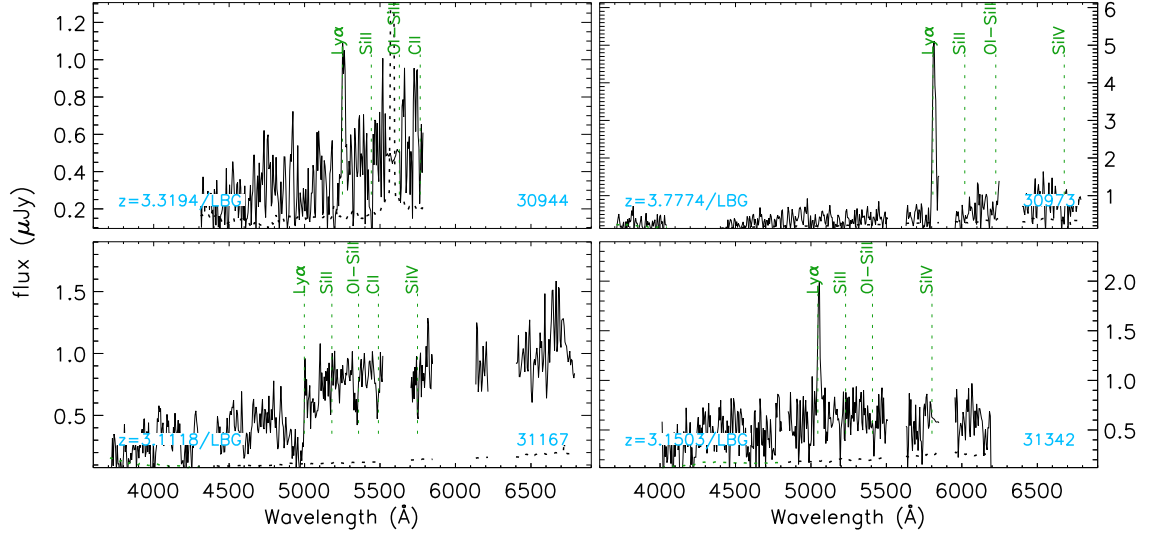


Figure 3 (continued)