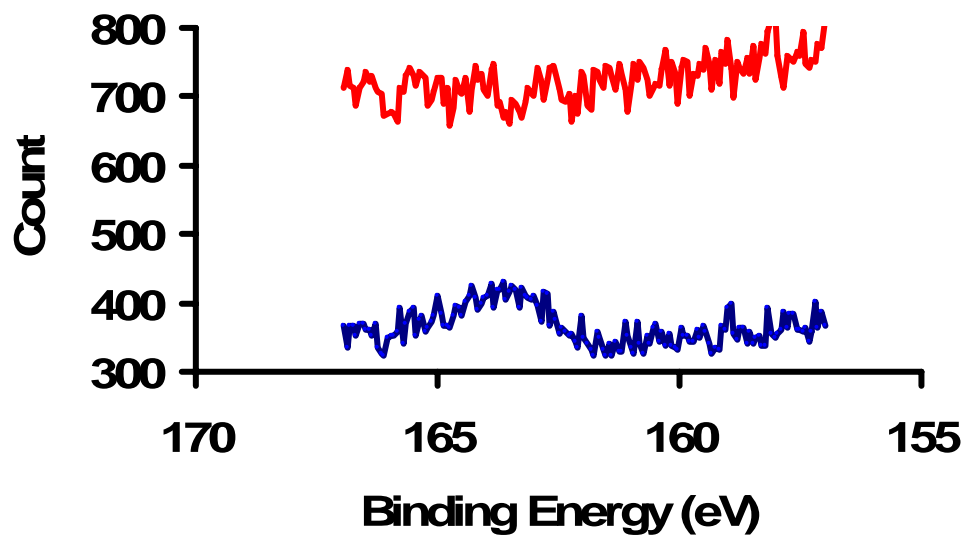


Supporting Information for

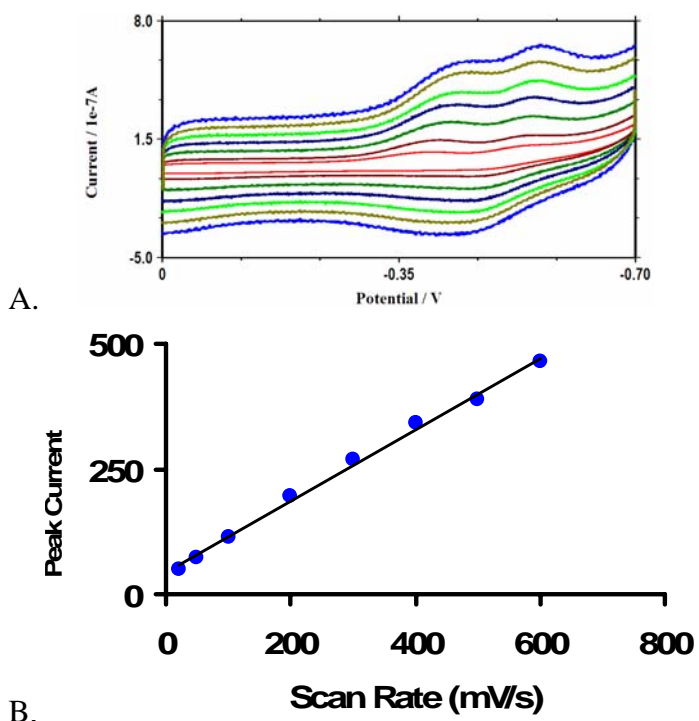
DNA-Mediated Electrochemistry of Disulfides on Graphite

Alon A. Gorodetsky and Jacqueline K. Barton

*Department of Chemistry and Chemical Engineering, California Institute of Technology, Pasadena,
California 91125*



Supporting Figure 1: X-Ray photoelectron spectroscopy spectra of HOPG modified with pyrene modified well matched duplex DNA. DNA with thiols in the sugar phosphate backbone is shown in blue and without thiols in the sugar phosphate backbone is shown in red.



Supporting Figure 2: A: Cyclic voltammetry at various scan rates of an electrode modified with duplex DNA featuring a disulfide in the sugar phosphate. B: A plot of peak current as a function of scan rate for the reversible second wave.