

Supporting Information for

Methods to Explore Cellular Uptake of Ruthenium Complexes

Cindy A. Puckett and Jacqueline K. Barton*

Division of Chemistry and Chemical Engineering, California Institute of Technology, Pasadena, CA 91125

RECEIVED DATE (will automatically be inserted after manuscript publication)

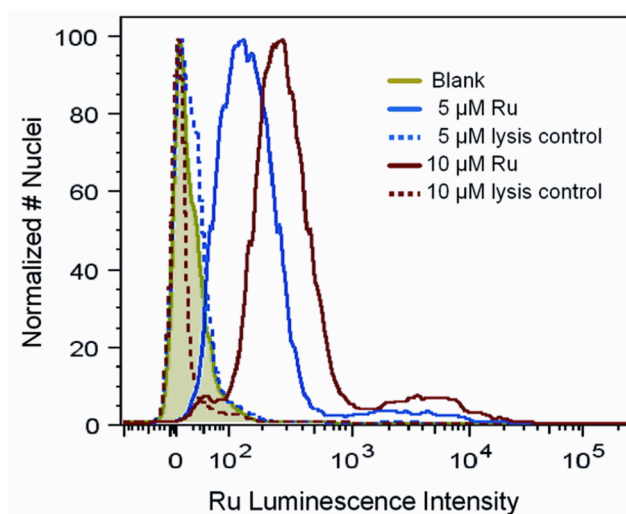


Figure S1. Flow cytometry analysis of nuclei isolated from HeLa cells incubated with 5 or 10 μM $\text{Ru}(\text{DIP})_2\text{dppz}^{2+}$ for 2 h at 37 °C. Controls were performed to evaluate the extent of Ru contamination into the nucleus from the cytoplasm during lysis. For these controls, cells were lysed using cell lysate from cells incubated with $\text{Ru}(\text{DIP})_2\text{dppz}^{2+}$.