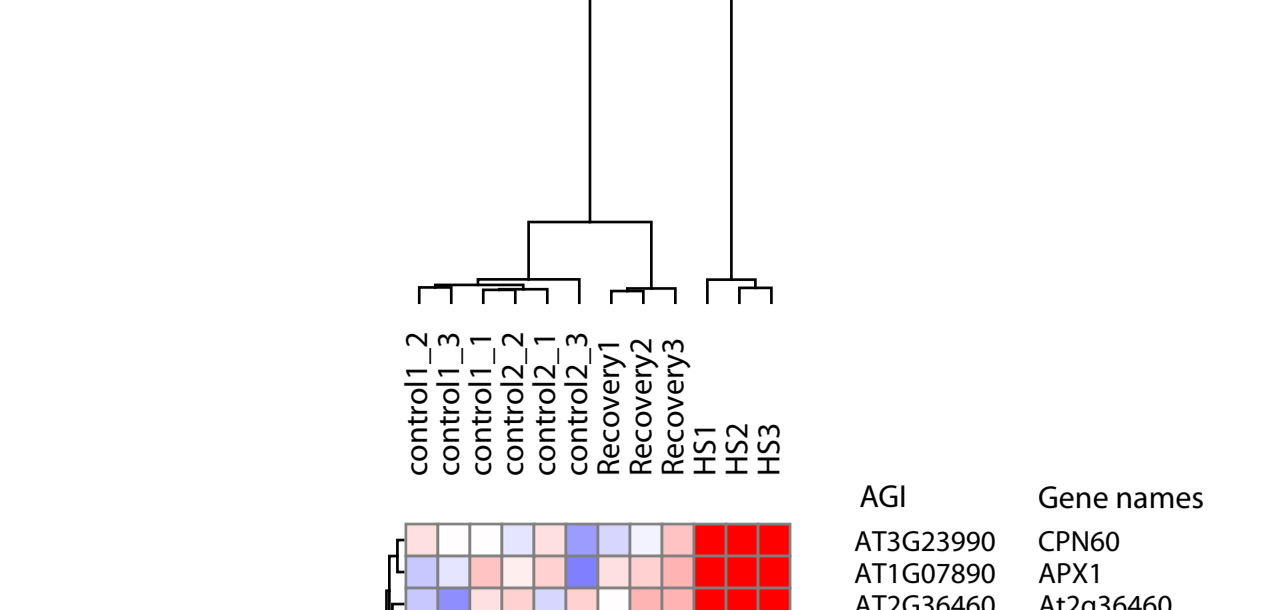


D. Proteins regulated by heat stress (p-value <0.01; heat shock samples compared to control series 2)



| AGI | Gene names |
|-----------|-----------------|
| AT3G23990 | CPN60 |
| AT1G07890 | APX1 |
| AT2G36460 | At2g36460 |
| AT1G72660 | DRG2 |
| AT3G09840 | CDC48A |
| AT4G25130 | MSR4 |
| AT3G13470 | CPN60B2 |
| AT2G28000 | CPN60A1 |
| AT3G08590 | Q9M9K1 |
| AT3G26450 | At3g26450 |
| AT4G12400 | HOP3 |
| AT5G15450 | CLPB3 |
| AT2G34040 | At2g34040 |
| AT2G29500 | HSP17.6B |
| AT5G42220 | At5g42220 |
| AT4G24280 | HSP70-6 |
| AT4G29330 | DER1 |
| AT2G46240 | BAG6 |
| AT2G21130 | CYP19-2 |
| AT1G76080 | CDSP32 |
| AT2G22240 | IPS2 |
| AT5G10860 | CBSX3 |
| AT3G18820 | RABG3F |
| AT2G39730 | RCA |
| AT2G42600 | PPC2 |
| AT2G34420 | Lhb1B2 |
| AT5G08280 | HEMC |
| AT1G62740 | HOP2 |
| AT5G66570 | PSBO1 |
| AT3G48530 | KING1 |
| AT4G21580 | At4g21580 |
| AT2G19760 | PRO1 |
| AT4G35100 | PIP2-7 |
| AT3G12580 | MED37C |
| AT5G48570 | FKBP65 |
| AT3G25230 | ROF1 |
| AT5G09590 | HSP70-10 |
| AT4G09150 | At4g09150 |
| AT2G20560 | At2g20560 |
| AT3G07770 | Hsp89.1 |
| AT1G79550 | T8K14.3 |
| AT3G12050 | T21B14.13 |
| AT1G16030 | HSP70-5 |
| AT1G74310 | CLPB1 |
| AT3G62250 | RPS27AC |
| AT3G44190 | F26G5_140 |
| AT5G52640 | HSP90-1 |
| AT1G29690 | CAD1 |
| AT1G77760 | NIA1 |
| AT4G24160 | At4g24160 |
| AT2G41100 | CML12 |
| AT1G55450 | T5A14.14 |
| AT1G69740 | HEMB1 |
| AT5G18400 | Q8L7Z3-2 |
| AT5G63790 | NAC102 |
| AT5G03380 | At5g03380 |
| AT5G22060 | ATJ2 |
| AT3G46780 | T6H20.190 |
| AT4G01050 | STR4 |
| AT5G59420 | ORP3C |
| AT2G33040 | ATPC |
| AT1G09070 | F7G19.6 |
| AT5G20720 | CPN21 |
| AT4G23670 | F9D16.140 |
| AT3G57880 | T10K17.90 |
| AT1G20620 | CAT3 |
| AT1G05500 | SYT5 |
| AT1G62570 | FMOGS-OX4 |
| AT2G39310 | JAL22 |
| AT4G04640 | ATPC1 |
| AT3G09440 | HSP70-3 |
| AT5G02490 | MED37D |
| AT3G44110 | ATJ3 |
| AT1G11910 | APA1 |
| ATCG00680 | psbB |
| AT2G33150 | PED1 |
| AT4G33510 | DHS2 |
| AT1G62180 | 42462 |
| AT4G34230 | CAD5 |
| AT2G34590 | E1-BETA-2 |
| AT4G35860 | RABB1B |
| AT4G21990 | 42463 |
| AT3G19760 | RH2 |
| AT3G01420 | DOX1 |
| AT5G56630 | POX7 |
| AT1G51710 | UBP6 |
| AT5G35630 | GLN2 |
| AT5G47200 | RABD2B |
| AT3G52930 | F8J2_100 |
| AT1G66240 | ATX1 |
| AT5G55190 | RAN3 |
| AT5G38410 | At5g38410 |
| AT4G38970 | FBA2 |
| AT4G20260 | PCAP1 |
| AT4G01310 | RPL5 |
| ATCG00020 | psbA |
| AT1G20330 | SMT2 |
| AT5G14740 | BCA2 |
| AT3G01500 | BCA1 |
| AT1G09340 | CSP41B |
| AT1G15820 | F7H2.16 |
| AT4G38740 | CYP18-3 |
| AT2G33800 | rps5 |
| AT4G39520 | DRG3 |
| AT5G55160 | SUMO2 |
| AT2G35900 | At2g35900 |
| AT5G62090 | SLK2 |
| AT4G33680 | DAP |
| AT1G70850 | MLP34 |
| AT1G11660 | HSP70-16 |
| AT4G34480 | Q9M069 |
| AT5G11090 | T5K6_80 |
| AT5G03650 | SBE2.2 |
| AT2G04350 | LACS8 |
| AT5G06760 | LEA4-5 |
| AT5G52300 | LT165 |
| AT3G07560 | PEX13 |
| AT5G14780 | FDH1 |
| AT4G35090 | CAT2 |
| AT1G64950 | F13O11.25 |
| AT3G53420 | PIP2-1 |
| AT3G48000 | ALDH2B4 |
| AT2G43750 | OASB |
| ATCG00270 | psbD |
| AT3G17800 | At3g17800 |
| AT5G16880 | At5g16880 |
| AT2G45960 | PIP1B |
| AT3G09260 | BGLU23 |
| AT5G11110 | SPS2 |
| AT1G05010 | ACO4 |
| AT1G20110 | At1g20110 |
| AT5G05690 | CPD |
| AT3G53460 | CP29 |
| AT5G05170 | CESA3 |
| AT3G57410 | VLN3 |
| AT3G49910 | RPL26A |
| AT5G64740 | CESA6 |
| AT3G51550 | FER |
| AT2G21390 | Q9SJT9 |
| AT4G23190 | CRK11 |
| AT5G03040 | icd2 |
| #N/A | Q9FGK9 ARATHdbi |
| AT5G52310 | LTI78 |
| AT4G34710 | SPE2 |
| AT2G21660 | RBG7 |
| AT1G48850 | EMB1144 |
| AT2G07360 | At2g07360 |
| AT3G55450 | PBL1 |
| AT1G59870 | ABCG36 |
| AT1G10290 | DRP2A |
| AT1G22280 | PAPP2C |
| AT3G62830 | UXS2 |
| AT1G17720 | PP2AB2 |
| AT4G23270 | CRK19 |
| AT2G47650 | UXS4 |
| AT2G22125 | At2g22125 |
| AT4G34450 | QOWW26 |
| AT1G65960 | GAD2 |
| AT3G43300 | BIG5 |
| AT4G31480 | Q9SV21 |
| AT2G21470 | SAE2 |
| AT1G75660 | XRN3 |
| AT5G23450 | LCBK1 |
| AT2G13560 | NAD-ME1 |
| AT5G25610 | RD22 |
| AT4G00720 | ASK8 |
| AT5G09440 | EXL4 |
| AT4G20830 | Q9SVG4-2 |
| AT4G32285 | Q8S9J8 |
| AT5G52920 | PKP2 |
| AT4G30210 | ATR2 |
| AT1G78240 | QUA2 |
| AT5G49720 | KOR |
| AT2G05920 | At2g05920 |
| AT3G15610 | At3g15610 |
| AT3G55770 | WLIM2B |
| AT3G50370 | At3g50370 |
| AT4G32410 | CESA1 |
| AT1G58110 | At1g58110 |
| AT1G09780 | PGM1 |
| AT5G42950 | At5g42950 |
| AT1G15780 | MED15A |
| AT3G02750 | PPC6-1 |
| AT3G22310 | RH9 |
| AT1G51500 | ABCG12 |
| AT5G53140 | Q9AT1 |
| AT2G20960 | pEARL14 |
| AT2G35050 | At2g35050 |
| AT5G44490 | BGLU26 |
| AT2G52470 | MED36B |
| AT4G00730 | ANL2 |
| AT1G78850 | F9K20.10 |
| AT5G08450 | At5g08450 |
| AT3G11130 | CHC1 |
| AT1G01950 | ARK2 |
| AT3G01310 | At3g01310 |
| AT5G48380 | Q9ASS4 |
| AT2G32240 | At2g32240 |
| AT2G01720 | OST1B |
| AT1G55500 | ECT4 |
| AT1G22610 | F12K8.4 |
| AT1G59610 | DRP2B |
| AT3G57330 | ACA11 |
| AT4G02480 | At4g02480 |
| AT3G54400 | T12E18_90 |
| AT3G03380 | DEGP7 |
| AT3G13460 | ECT2 |
| AT3G01540 | RH14 |
| AT5G61020 | ECT3 |
| AT5G38640 | Q9FFV8 |
| AT4G00360 | CYP86A2 |
| AT2G26250 | FDH |
| AT4G37870 | PCKA |
| AT4G25960 | ABCB2 |
| AT1G50480 | THFS |
| AT4G13940 | SAHH1 |
| AT1G01120 | KCS1 |
| AT5G17760 | At5g17760 |
| AT2G32800 | LECRKS2 |
| AT3G22380 | TIC |
| AT3G53520 | UXS1 |
| AT2G15620 | NIR1 |
| AT2G25430 | Q8LF20 |
| AT4G27500 | PPI1 |
| AT1G09570 | PHYA |
| AT5G14640 | ASK5 |
| AT4G30340 | DGK7 |
| AT4G24510 | CER2 |
| AT1G49430 | LACS2 |
| AT5G67360 | SBT1.7 |
| AT4G39330 | CAD9 |
| AT1G07720 | KCS3 |
| AT2G39350 | ABCG1 |
| AT1G65930 | CICDH |
| AT1G80410 | EMB2753 |
| AT5G13650 | At5g13650 |
| AT5G26742 | emb1138 |
| AT5G24690 | Q93W02 |
| AT5G50210 | QS |
| AT2G30140 | UGT87A2 |
| AT4G34970 | LARP6B |
| AT1G37130 | NIA2 |
| AT1G76490 | HMG1 |
| AT4G20850 | TPP2 |
| AT5G08130 | BIM1 |
| AT5G57870 | EIF(ISO)4G1 |
| AT1G17840 | ABCG11 |
| AT1G15750 | TPL |
| AT1G29370 | At1g29370 |
| AT5G60790 | ABCF1 |
| AT3G55610 | P5CSB |
| AT1G71040 | LPR2 |
| AT3G13790 | ATBFRACT1 |
| AT2G37410 | TIM17-2 |
| AT3G20250 | APUM5 |
| AT3G20410 | CPK9 |
| AT4G20860 | T13K14.20 |
| AT1G43710 | SDC |
| AT2G47000 | ABCB4 |
| AT1G14740 | OBEB3 |
| AT5G20280 | SPS1 |
| AT2G24360 | At2g24360 |
| AT1G80070 | F18B13.15 |
| AT4G30380 | B5L1 |
| AT4G28880 | ckl3 |
| AT5G53620 | MNC6.16 |
| AT2G26910 | ABCG32 |
| AT3G22330 | RH53 |
| AT4G34200 | PGDH1 |
| AT5G64120 | PER71 |
| AT3G24503 | ALDH2C4 |
| AT1G24180 | IAR4 |
| AT1G63500 | At1g63500 |
| AT5G51830 | Q9FLH8 |
| AT2G02800 | APK2B |
| AT3G51950 | Q9SV09 |
| AT5G41670 | Q9FFR3 |
| AT3G07810 | At3g07810 |
| AT5G47010 | UPF1 |
| AT5G52060 | BAG1 |
| AT5G39050 | PMAT1 |
| AT4G01870 | T7B11.13 |
| AT4G34131 | UGT73B3 |
| AT5G57655 | XYLA |
| AT3G06350 | CYP72A13 |
| AT4G02940 | EMB3004 |
| AT3G01120 | CGS1 |
| AT5G49360 | BXL1 |
| AT2G26080 | GLDP2 |
| AT5G42100 | BG_PPAP |
| AT2G15480 | At2g15480 |
| AT1G55360 | F7A10.1 |
| AT1G21630 | At1g21630 |
| AT1G70520 | CRK2 |
| AT4G21710 | NRPB2 |
| AT3G01600 | POB1 |
| AT1G01540 | At1g01540 |
| AT3G25520 | ATL5 |
| AT2G38470 | WRKY33 |
| AT3G55430 | T22E16.90 |
| AT4G11850 | PLDGAMMA1 |
| AT1G27770 | ACA1 |
| AT5G53460 | GLT1 |
| AT5G17920 | MS1 |
| AT1G65010 | F4I8B9 |
| AT5G66200 | GAD1 |
| AT1G64710 | ARO2 |
| AT1G66180 | At1g64710 |
| AT5G64260 | F15E12.7 |
| AT5G12950 | EXL2 |
| AT1G60140 | T24H18_120 |
| AT4G00330 | TRC5 |
| AT1G13210 | CPXK2 |
| AT1G28380 | ALA11 |
| AT2G37220 | CP29B |
| AT3G46600 | SCL30 |
| AT5G59730 | EXO70H7 |
| AT3G28860 | ABCB19 |
| AT4G18030 | Q94EJ6 |
| AT1G64390 | Q42059 |
| AT5G09870 | CESA5 |
| AT4G23180 | CRK10 |
| AT1G03370 | Q9ZV79 |
| AT5G04550 | T32M21_140 |
| AT1G80490 | TPR1 |
| AT2G18750 | CBP60C |
| AT2G45540 | At2g45540 |
| AT3G52240 | Q8GYC9 |
| AT1G72150 | PATL1 |
| AT2G41740 | VLN2 |
| AT2G38040 | CAC3 |
| AT1G24160 | F3I6.9 |
| AT4G38600 | UPL3 |
| AT3G08030 | T8G24.2 |
| AT5G09500 | RPL35A |
| AT5G15200 | RPS9B |
| AT1G06410 | TPS7 |
| AT3G15950 | NAI2 |
| AT1G68560 | XYL1 |
| AT3G18480 | LRR-RLK |
| AT5G59970 | At1g07660 |
| AT5G64570 | BXL4 |
| AT1G09750 | EXO |
| AT3G51060 | F21M12.13 |
| AT3G53740 | RPS17C |
| AT4G40030 | RPL36B |
| AT1G03230 | At4g40030 |
| AT1G76160 | F15K9.16 |
| AT4G12420 | sk55 |
| AT2G06850 | SKU5 |
| AT5G17820 | XTH4 |
| | PER57 |