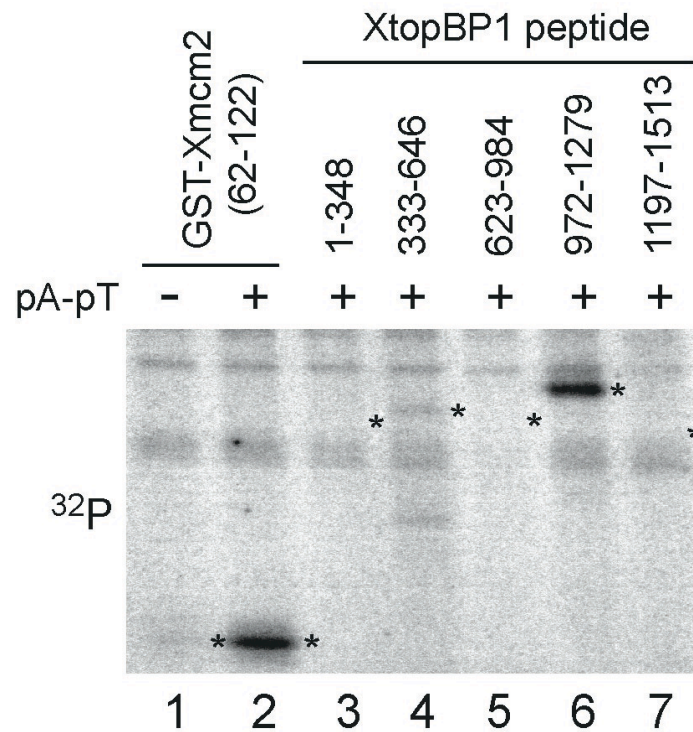


## Supplemental Data



**Supplemental Figure 1.** Phosphorylation of XtopBP1 by Xatm. Xatm was immunoprecipitated from extracts lacking (lane 1) or containing (dA)<sub>70</sub>-(dT)<sub>70</sub> (*pA-pT*) (lanes 2-7) and incubated in the presence of [ $\gamma$ -<sup>32</sup>P]ATP with GST-Xmcm2(62-122) (lanes 1 and 2) or GST fusion proteins containing the indicated fragments of XtopBP1 (lanes 3-7). Samples were processed for SDS-PAGE and phosphorimaging. The expected positions of the various GST fragments are indicated with an asterisk on the right of the respective lanes.