

SUPPLEMENTAL INFORMATION

Figure 1. Western blots of oocyte membranes show that E92R but not R258E can traffic onto the cell surface. Lane 1, uninjected oocytes. Lanes 2, wild type receptor oocyte. Lane 3, wild type receptor with an N-terminal HA tag. Lane 4, E92R, and lane 5 is R258E. Bands at ~ 55 kd are the GABA_C ρ1 subunits.

Figure 2. Schild plots were generated at several fixed concentrations of TPMPA. EC₅₀ values of wild type receptors in the presence of TPMPA are: 1.34 ± 0.04 μM (control), 1.84 ± 0.02 μM (1 μM TPMPA), 7.59 ± 0.21 μM (10 μM TPMPA) and 54.9 ± 1.6 μM (100 μM TPMPA). EC₅₀ values for E92R/R258E: 0.35 ± 0.004 μM (control), 0.74 ± 0.02 μM (1 μM TPMPA), 2.97 ± 0.08 μM (10 μM TPMPA) and 21.1 ± 0.6 μM (100 μM TPMPA). K_d values are derived from x-intercepts of linear plots (not shown).

Figure 1.

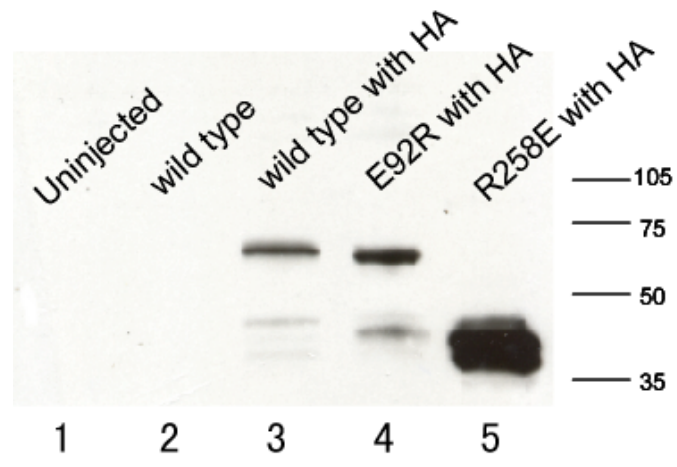


Figure 2.

