

PROCEEDINGS OF SPIE

[SPIDigitalLibrary.org/conference-proceedings-of-spie](https://spiedigitallibrary.org/conference-proceedings-of-spie)

Measurement of absorption and scattering spectra of chicken breast with oblique incidence reflectometry

Guillermo Marquez, Lihong V. Wang, Shao-Pow Lin, Steven L. Jacques, Frank K. Tittel, et al.

Guillermo Marquez, Lihong V. Wang, Shao-Pow Lin, Steven L. Jacques, Frank K. Tittel, Sharon L. Thomsen, Jon A. Schwartz, "Measurement of absorption and scattering spectra of chicken breast with oblique incidence reflectometry," Proc. SPIE 2976, Biomedical Sensing, Imaging, and Tracking Technologies II, (16 June 1997); doi: 10.1117/12.275539

SPIE.

Event: BiOS '97, Part of Photonics West, 1997, San Jose, CA, United States

Measurement of Absorption and Scattering Spectra of Chicken Breast with Oblique Incidence Reflectometry

Guillermo Marquez, B. S.¹, Lihong Wang, Ph.D.^{1a},
Shao-Pow Lin, B.S.², Steven L. Jacques, Ph.D.³, Frank K. Tittel, Ph.D.⁴,
Sharon L. Thomsen, M. D.⁵, Jon Schwartz, M.S.⁵

- (1) Bioengineering Program, 234C Zachry Engineering Center
Texas A&M University, College Station, Texas 77843, USA
- (2) Neuroscience Program, Washington University, St. Louis, MO, USA
- (3) Oregon Medical Laser Center, Providence/St. Vincent Hospital, Portland, OR, USA
- (4) Department of Electrical and Computer Engineering, Rice University
P.O. Box 1892, Houston, Texas 77251, USA
- (5) Laser Biology Research Laboratory, University of Texas M. D. Anderson Cancer Center
1515 Holcombe Boulevard, Houston, Texas 77030, USA
- (a) Corresponding author. E-mail: LWang@tamu.edu

Abstract

Oblique incidence reflectometry is a simple and accurate method for measuring the absorption and reduced scattering coefficients of turbid media. We used this technique to deduce absorption and reduced scattering spectra from wavelength resolved measurements of the relative diffuse reflectance profile of white light. In this study we measured the absorption and reduced scattering coefficients of chicken breast in the visible (400-800nm) with the oblique incidence probe oriented at 0, 30, 60, and 90 degrees relative to the muscle fibers. We found that the reconstructed optical properties varied with probe orientation. This experiment demonstrates 1) the application of oblique-incidence fiber-optic reflectometry to measurements on biological tissue and 2) the effect of structural anisotropy on optical properties.

Key Words

Oblique incidence, reflectometry, optical properties, turbid media, biological tissues.

Introduction

This paper presents the continued research for measuring optical properties of turbid media using oblique incidence reflectometry. Wang and Jacques first presented this method as a means of measuring the reduced scattering coefficient of biological tissues at a single wavelength¹ and Lin *et al.* have demonstrated that absorption and scattering spectra can be easily obtained with this method as well². Our current work is based on finding the relationship of tissue optical properties to muscle fiber orientation.

Measuring the optical properties, absorption coefficient (μ_a) and reduced scattering coefficient (μ_s'), of biological tissues non-invasive, *in vivo*, and real-time remains a problem in the field of biomedical optics. It is important to know the optical properties of the tissues being irradiated to properly dose light in the therapeutic procedures such as photocoagulation or photodynamic therapy or to measure tissue metabolic status. Also the optical properties themselves can potentially provide enough information to diagnose disease, in particular cancer. This is because light in the visible and near infrared interacts with both the molecular, and subcellular components of tissue. Therefore, characteristic changes in tissue optical properties at particular wavelengths may be indicative of disease.

Other techniques have been developed to measure tissue optical properties. The most common method is the integrating sphere measurement, but this requires the removal of a thin slice of tissue (invasive)³. Another technique is normal incidence video reflectometry. One variation of normal incidence reflectometry which is based on diffusion theory provides a non-invasive way to determine optical properties, but requires a measurement of both the spatial distribution of diffuse reflectance and the total diffuse reflectance at each wavelength⁴. In short, noninvasive, inexpensive, and real time measurement of tissue optical properties remains a challenge.

Methods and Materials

Experimental

The experimental system is drawn schematically in Figure 1. The detection system was an optical multichannel analyzer that utilizes a spectrograph, an intensified CCD camera, and a computer to automatically scan through the wavelength range of 400 nm - 800 nm and give the spectrum of the collected light.

White light was delivered and the reflectance was collected with a fiber optic probe made from black delrin and 600 μm diameter low-loss optical fiber. The source fiber is oriented at 45° angle, and nine (9) collection fibers in a linear array collected the diffuse reflectance (Figure 2). To correct for slight variations in collection efficiency from one detection fiber to the next, a correction factor, k_i , was previously calculated for each fiber based on a calibration procedure using standard phantoms.

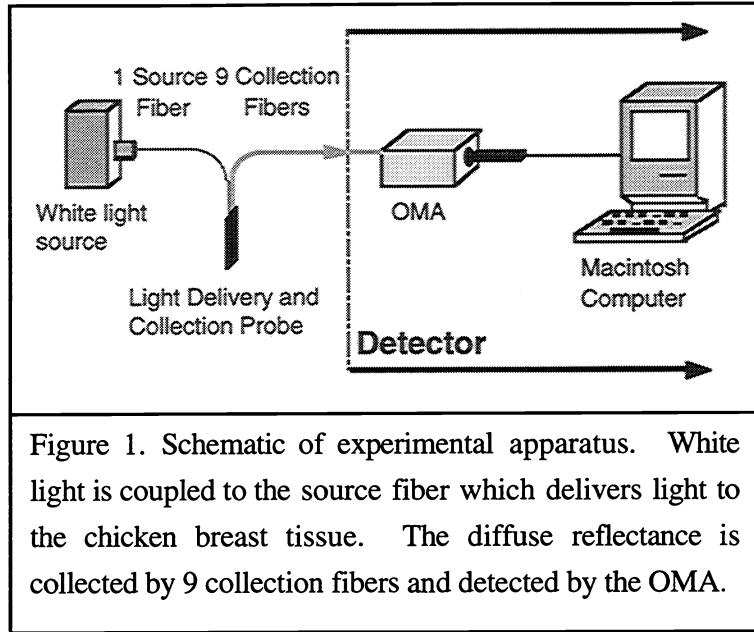


Figure 1. Schematic of experimental apparatus. White light is coupled to the source fiber which delivers light to the chicken breast tissue. The diffuse reflectance is collected by 9 collection fibers and detected by the OMA.

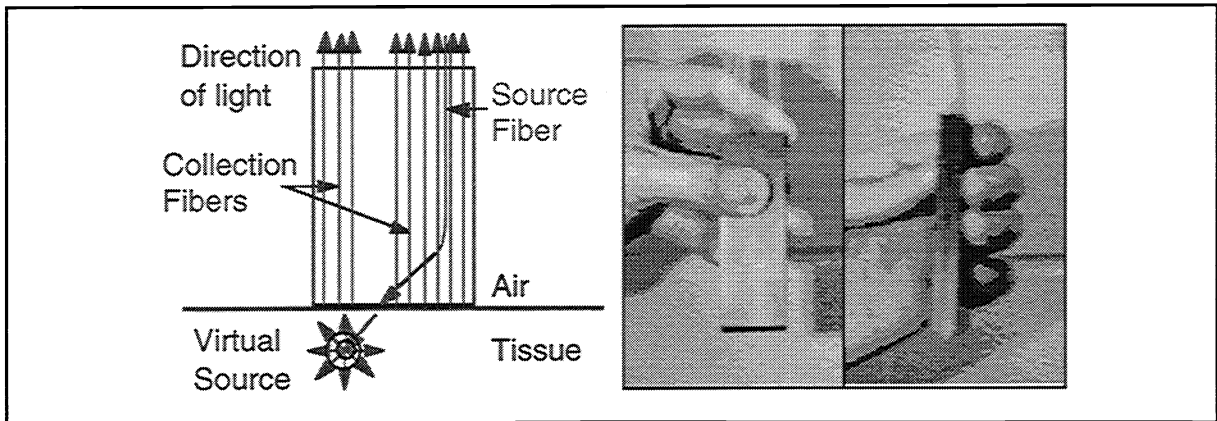


Figure 2. Oblique-incidence optical fiber probe. One source fiber incident at 45° and nine collection fibers were bundled and encased to form a hand-held piece. The core diameter of the fibers was 600 μm . The index of refraction of the fiber core was 1.46. The index of refraction of chicken breast tissue was 1.37. The angle of refraction was computed to be 48.9°. On the right is an actual picture of the probe.

Frozen, raw, chicken breasts from the store were allowed to thaw. The skin and fat was removed and the chicken breast were cut so as to have only one fiber orientation per chicken breast. The pieces were stacked in a small black bucket with all muscle fibers aligned (Figure 3).

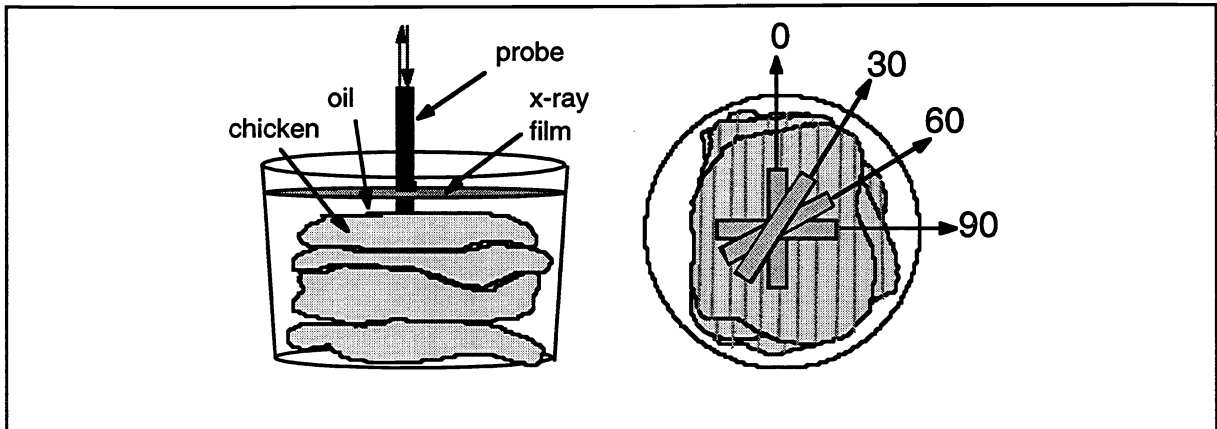


Figure 3. Chicken breast tissue setup. The container is 4" deep and 4" diameter. The probe made physical contact with the chicken tissue. Immersion oil was used as a coupling media. The figure on the right, shows the muscle orientation with respect to the probe: 0° indicates parallel and 90° perpendicular.

The bucket was then filled with small amount of microscope immersion oil ($n=1.5105$) to ensure good coupling between the separate pieces of chicken and to index match to the top surface. On top of the oil we floated an exposed x-ray film to approximate a matched boundary condition for diffusion theory. Four measurements were performed with the probe oriented at different angles relative to the muscle fibers: 0° (parallel), 30°, 60°, and 90° (perpendicular). Each set of angles was measured four times and the average is show in the results section.

Theoretical

When light enters a semi-infinite tissue, it will generally scatter a number of times before either being absorbed or escaping the tissue surface at a point other than its point of entry. This scattered light that escapes is called diffuse reflectance. Our method is derived from a diffusion theory based model of diffuse reflectance⁵. This diffusion theory model does not accurately model near diffuse reflectance. That is, reflectance that falls within the range of 1-2 transport mean free paths (mfp) of the source. This problem can be avoided by using only the "far diffuse reflectance."

For normally incident light, the spatial distribution of diffuse reflectance has been modeled by two isotropic point sources; one positive source located below the tissue surface and one negative image source above the tissue surface⁵. If light is delivered obliquely, the positive source is buried at the same distance from the point of incidence but with depth determined by Snell's law. Therefore, the fundamental difference between normal and oblique incidence is a shift in the

positions of the point sources in the x direction (Figure 4). Wang and Jacques¹ found the depth of the buried source to be

$$3D = 1/(0.35\mu_a + \mu_s') \quad (1)$$

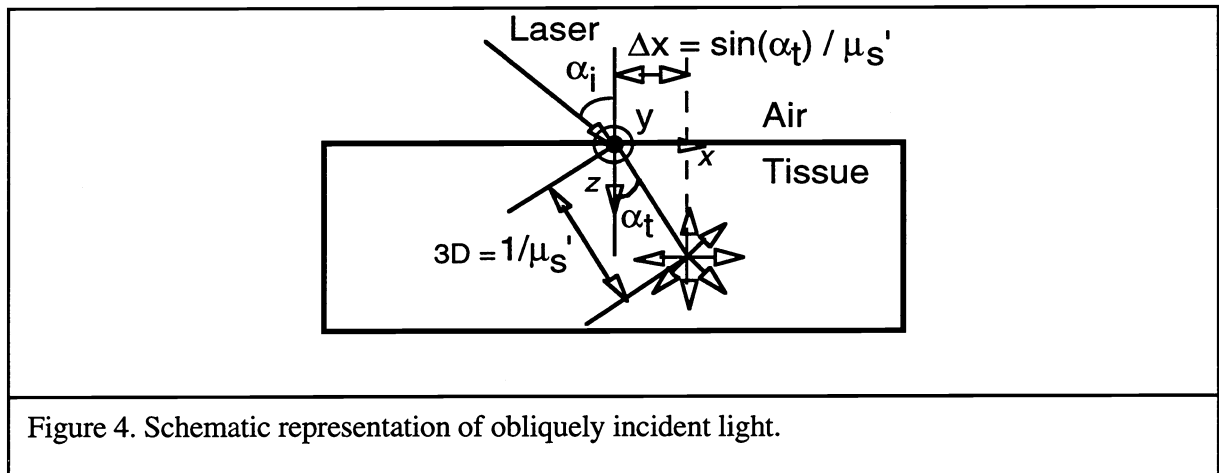


Figure 4. Schematic representation of obliquely incident light.

The height of the image source is further determined by the boundary condition at the tissue surface. The modified dipole source diffusion theory model is

$$R(x) = \frac{\Delta z (1 + \mu_{\text{eff}} \rho_1) \exp(-\mu_{\text{eff}} \rho_1)}{4\pi\rho_1^3} + \frac{(\Delta z + 2 z_b) (1 + \mu_{\text{eff}} \rho_2) \exp(-\mu_{\text{eff}} \rho_2)}{4\pi\rho_2^3} . \quad (2)$$

where ρ_1 and ρ_2 are the distances from the two point sources to the point of interest and

$$\Delta z = \frac{\cos(\alpha_t)}{0.35 \mu_a + \mu_s'} = \Delta x \tan(\alpha_t) . \quad (3)$$

Equation 2 can be scaled to fit a relative reflectance profile.

Therefore, the first step in our procedure was to measure the diffuse reflectance profile with our fiber optic probe. We used white light to do a multi-wavelength measurement. The light collected by each detection fiber was input to the OMA for spectral resolution. Because we determine the spectrum collected by each fiber, we have in fact measured the spatial distribution of diffuse reflectance at many wavelengths simultaneously (Figure 5a). Thus the reflectance profile at any wavelength can be extracted and analyzed to deduce the optical properties at that wavelength as in the Figure 1.

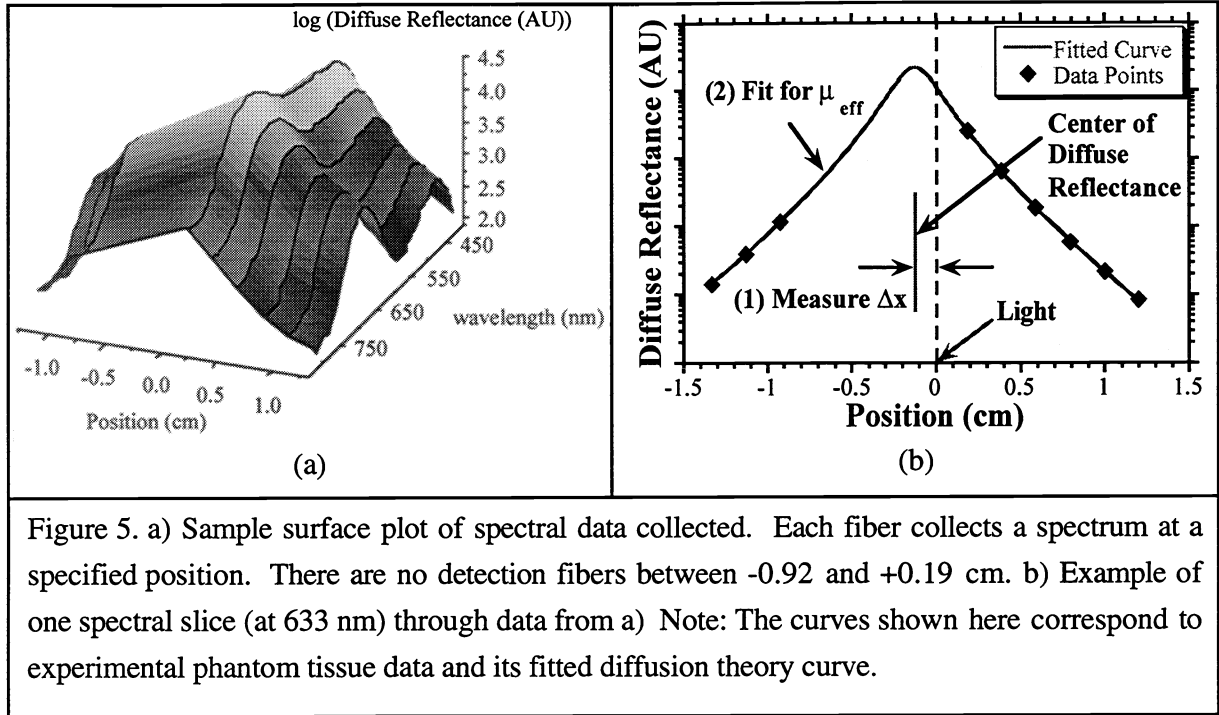


Figure 5. a) Sample surface plot of spectral data collected. Each fiber collects a spectrum at a specified position. There are no detection fibers between -0.92 and +0.19 cm. b) Example of one spectral slice (at 633 nm) through data from a) Note: The curves shown here correspond to experimental phantom tissue data and its fitted diffusion theory curve.

Once the position of the center of diffuse reflectance relative to the light entry point (Δx) was found, the diffusion coefficient was calculated from

$$D = \frac{\Delta x}{3 \sin(\alpha_t)} \quad (4)$$

Then a non-linear least squares fit to equation (2) with the Levenberg-Marquardt method⁶ yielded μ_{eff} .

$$\mu_{\text{eff}} = \sqrt{\mu_a / D} \quad (5)$$

and the following equations were used to compute for μ_a and μ_s' .

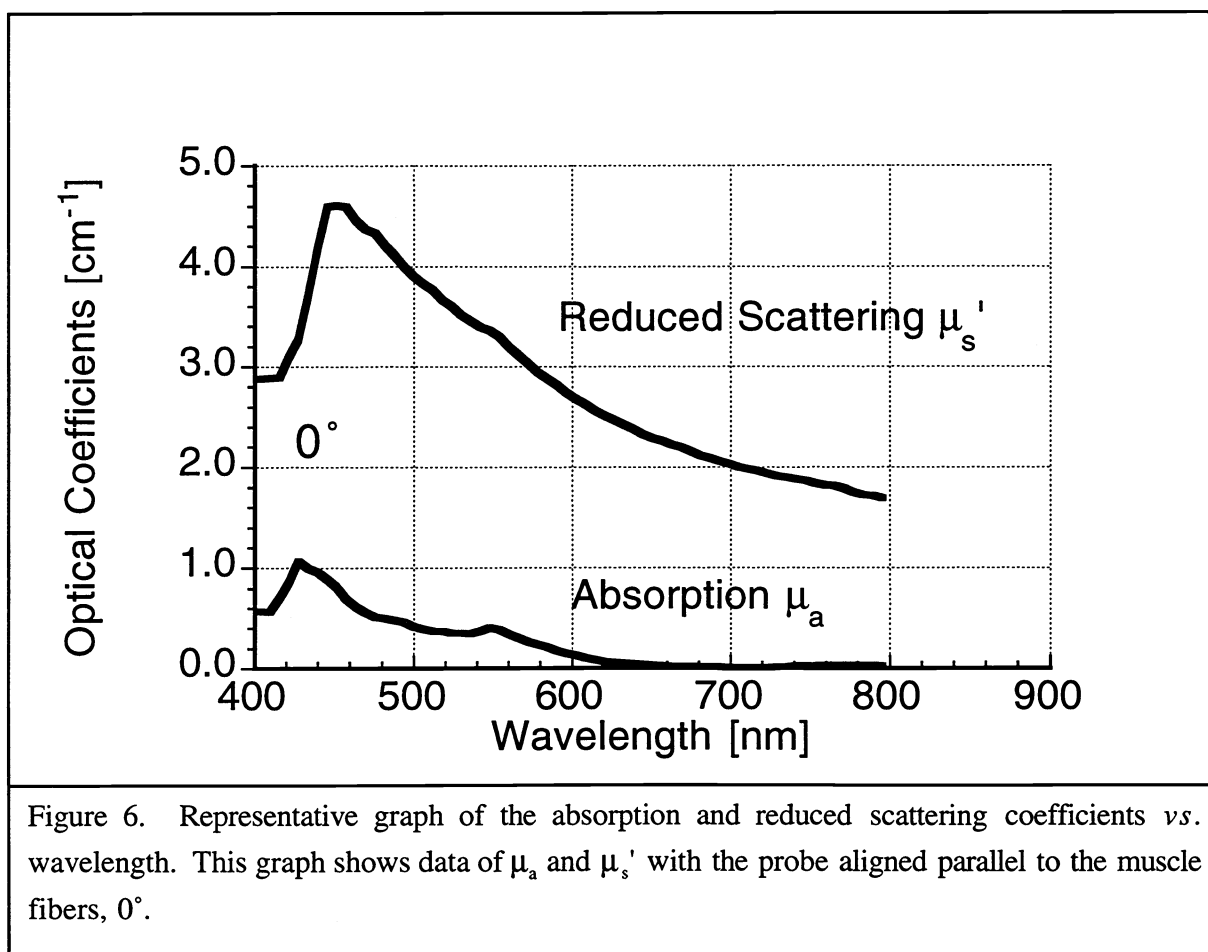
$$\mu_a = \frac{\mu_{\text{eff}}^2 \Delta x}{3 \sin(\alpha_t)} \quad (6)$$

and

$$\mu_s' = \frac{\sin(\alpha_t)}{\Delta x} - 0.35 \mu_a \quad (7)$$

Results

As shown in Figure 6 we can see the full spectrum of absorption and reduced scattering coefficients. The reduced scattering curve decreases smoothly with increase in wavelength. Two peaks at approximately 450 and 550 can be observed in the absorption curve.



In Figure 7 the average absorption for each angle is plotted against the wavelength. The absorption coefficient is consistently lowest at 0° degrees and highest at 90° . Figure 8 plots the average reduced scattering coefficients vs. the wavelengths. As a simple comparison, the 90° curve has a lower μ_s' than the 0° curve. However, we notice a crossover of these curves at about 550 to 600 nm.

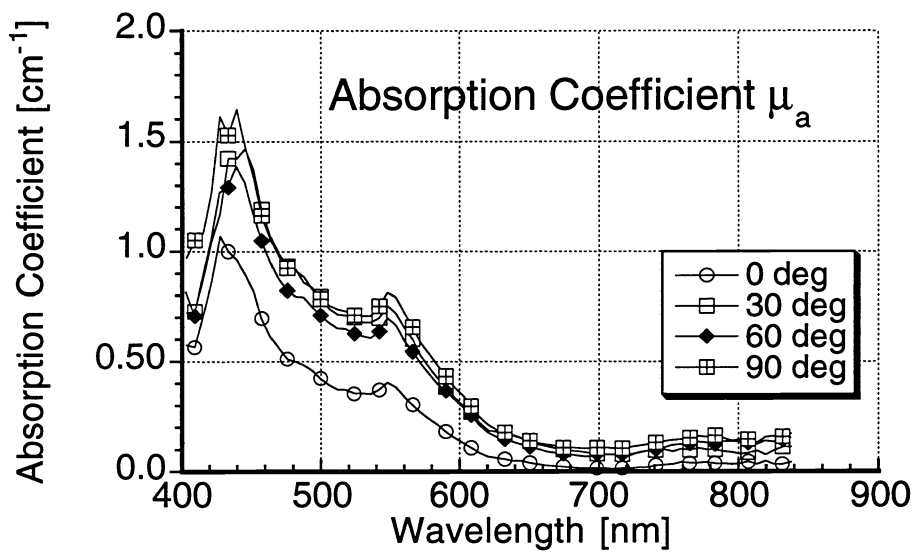


Figure 7. Absorption Coefficient vs. Wavelength

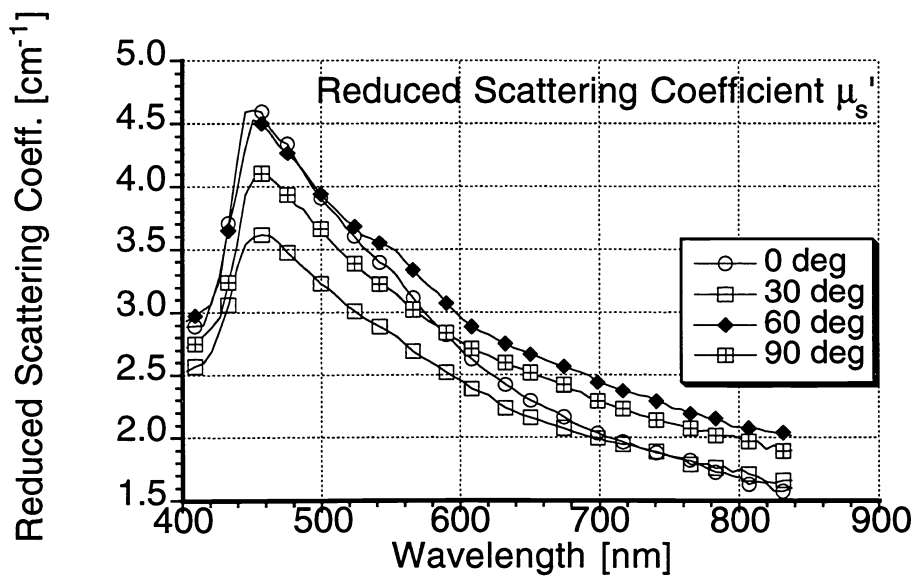


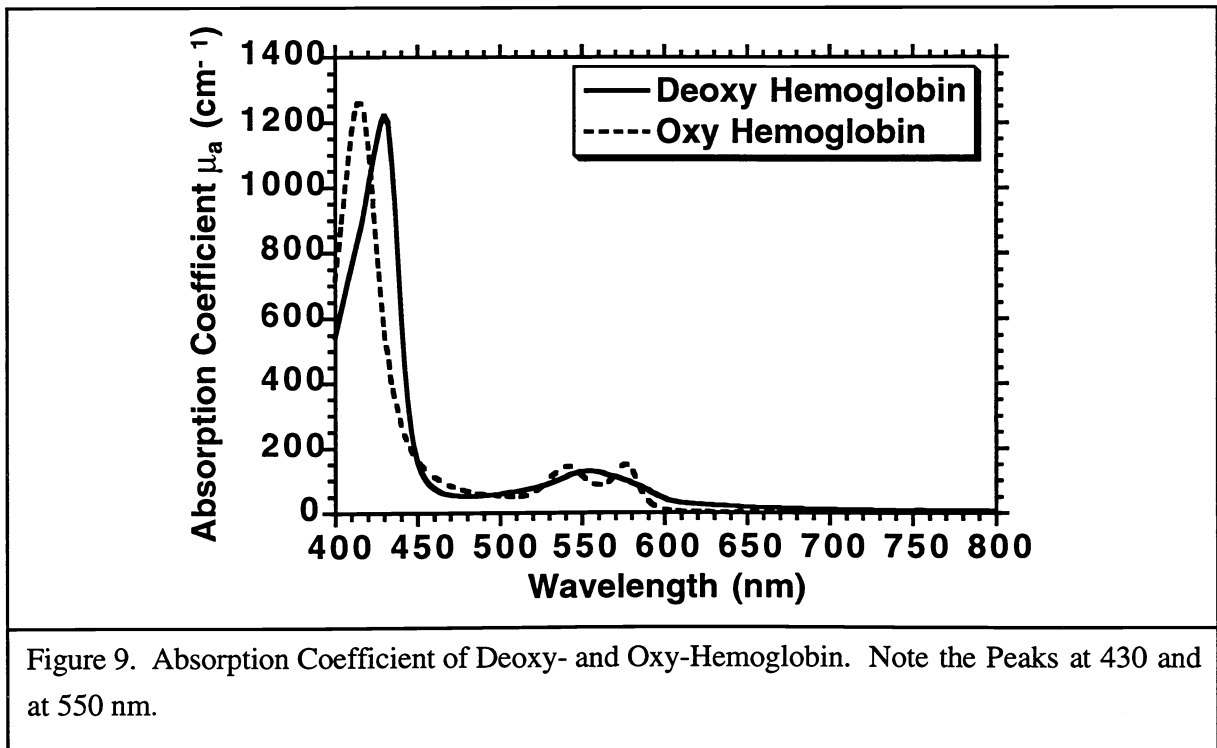
Figure 8. Reduced Scattering Coefficient vs. Wavelength

Discussion and Conclusions

As previously stated, oblique incidence reflectometry method can quickly, cheaply, and noninvasively measure the absorption and reduced scattering coefficients of turbid media. The multi-wavelength measurements were accomplished by extending our monochromatic measurements by using a white light source. In our experiments, we used chicken breast as a prelude to clinical studies. We hope to determine the effect of structured media such as muscle on the optical properties of tissues. Chicken breast was chosen because it has good muscle orientation, can be virtually fat free, and experimental preparation is very consistent.

As shown in Figure 7 and Figure 8 we can see differences in the absorption and reduced scattering coefficients due to changes in the angle. However, these results are still inconclusive because curves mainly at 30° and 60° for other data sets do not match up well to each other.

An interesting observation is that our μ_a curves match the peaks of previously published oxy- and deoxy- hemoglobin absorption curves (Figure 9). The double peaks in the measured absorption spectra should be caused by some residual hemoglobin in the chicken breast tissue. It is unclear whether the effect of myoglobin is present in the measured absorption spectra.



In conclusion this research demonstrates 1) the application of oblique-incidence fiber-optic reflectometry to measurements on biological tissue and 2) the effect of structural anisotropy on

optical properties. Our theory is based on the application of diffusion theory to the radiation transport equation. The theory that the propagation of light in the media must be an isotropic point source. However, chicken is not an isotropic media and therefore our absorption measurement is rather qualitative than quantitative. The reduced scattering coefficient can be considered accurate since Equation 7 is not based on μ_{eff} and μ_a is much less than μ_s' . The absorption coefficients are based on effective attenuation coefficient from the least squares fit to the dipole source diffusion theory model and so they are relative curves.

Acknowledgment

The project was sponsored in part by The Whitaker Foundation grant and the National Institutes of Health grant R29 CA68562.

Glossary

Absorption coefficient [μ_a , cm^{-1}]	The probability of photon absorption per unit infinitesimal pathlength.
Anisotropy [g]	The average of the cosine value of the deflection angle by single scattering.
Diffusion constant [D, cm]	Linking the gradient of light fluence, $\nabla\phi$, and light current, F, (Fick's law), i.e., $F = -D \nabla\phi$.
Effective attenuation coefficient [μ_{eff} , cm^{-1}]	The decay constant of light fluence far away from light source. $\mu_{\text{eff}} = \sqrt{3 \mu_a / D}$.
Interaction coefficient [μ_t , cm^{-1}]	The probability of photon interaction per unit infinitesimal pathlength, where the interaction includes both absorption and scattering. $\mu_t = \mu_a + \mu_s$. Sometimes, it is also called total interaction coefficient or total attenuation coefficient.
Mean free path [mfp]	The mean pathlength between interactions, which is $1/\mu_t$.
Penetration depth [δ , cm]	$\delta = 1/\mu_{\text{eff}}$. It represents decay constant of the light fluence far from the source.
Reduced scattering coefficient [μ_s' , cm^{-1}]	$\mu_s' = \mu_s (1 - g)$. Sometimes, it is also called transport scattering coefficient.
Scattering coefficient [μ_s , cm^{-1}]	The probability of photon scattering per unit infinitesimal pathlength.
Transport interaction coefficient [μ_t' , cm^{-1}]	$\mu_t' = \mu_a + \mu_s'$.
Transport mean free path [mfp']	$1/\mu_t'$.

References

1. L.-H. Wang and S. L. Jacques, "Use of a laser beam with an oblique angle of incidence to measure the reduced scattering coefficient of a turbid medium," *Applied Optics* 34, 2362-2366 (1995).
2. S.-P. Lin, L.-H. Wang, S. L. Jacques and F. K. Tittle, "Measurement of absorption and scattering spectra with oblique incidence reflectometry," in *Advances in Optical Imaging and Photon Migration*, OSA Technical Digest Series (Optical Society of America, Washington, D. C., 1996).
3. J. W. Pickering, S. A. Prahl, N. Vanwieringen, J. F. Beek, H. J. C. M. Sterenborg, and M. J. C. van Gemert, "Double-integrating-sphere system for measuring the optical properties of tissue," *Appl. Opt.*, 32, 399-410 (1993).
4. S. L. Jacques, A. Gutsche, J. A. Schwartz, L.-H. Wang, and F. K. Tittel, "Video reflectometry to specify optical properties of tissue *in vivo*," in *Medical Optical Tomography: Functional Imaging and Monitoring*, IS11 of SPIE Institute Series (Soc. Photo-Opt. Instrum. Eng., Bellingham, Wash), 211-226 (1993).
5. T. J. Farrell, M. S. Patterson, and B. C. Wilson, "A diffusion theory model of spatially resolved, steady-state diffuse reflectance for the non-invasive determination of tissue optical properties *in vivo*," *Med. Phys.* 19, 879-888 (1992).
6. W. H. Press, B. P. Flannery, S. A. Teukolsky, and W. T. Vetterlin, *Numerical Recipes in C*, 2nd ed. (Cambridge U. Press, Cambridge, UK, 1992), Section 15.5.