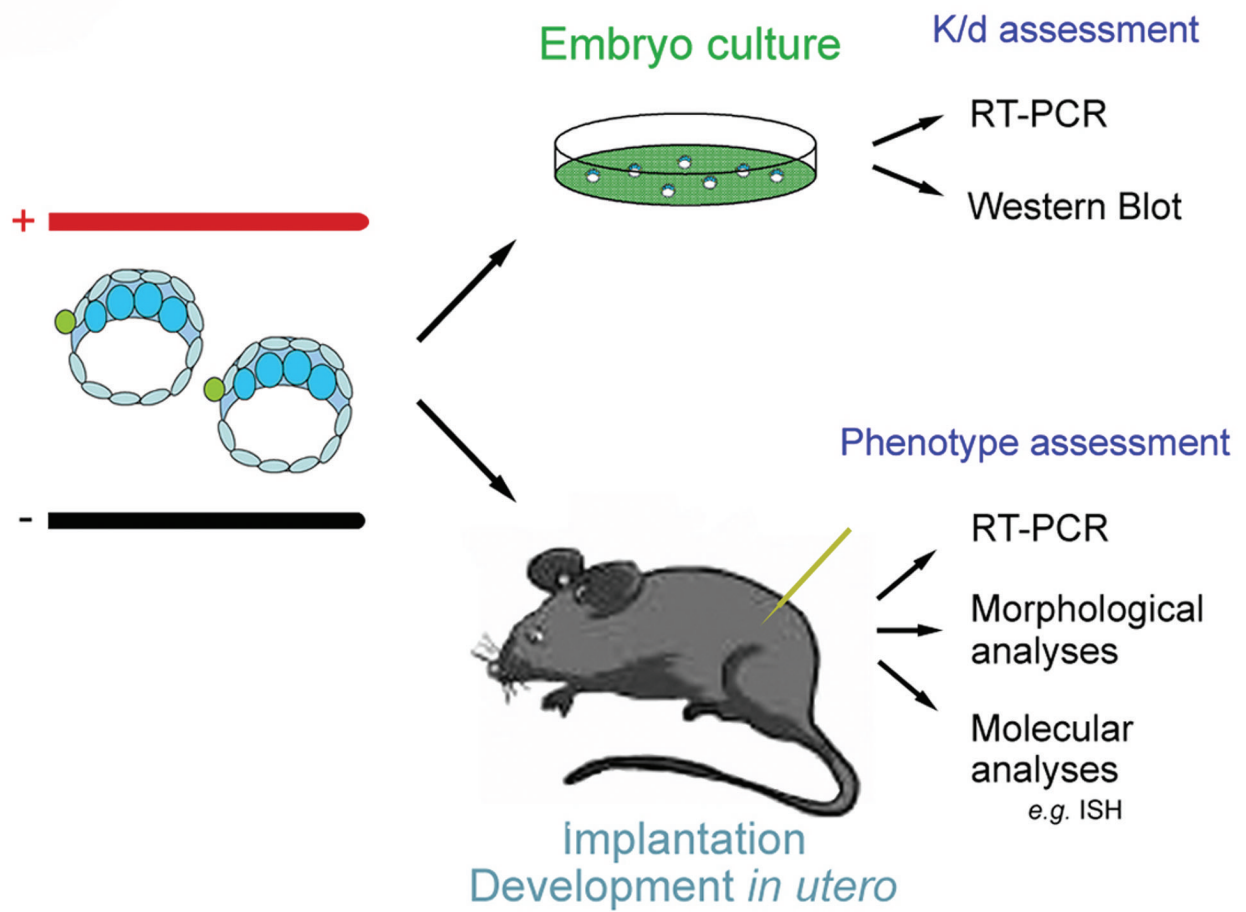


Supplementary Figure 1



Method for RNAi in peri-implantation development

Supplementary Table 1

Marker Gene															
Emb Day	<i>Brachyury</i>			<i>Eomes</i>			<i>Cer-1</i>			<i>Lefty-1</i>			<i>Lhx1</i>		
	Group 1		Group 2	Group 1		Group 2	Group 1		Group 2	Group 1		Group 2	Group 1		Group 2
	MN	DA	Df	MN	DA	Df	MN	DA	Df	MN	DA	Df	MN	DA	Df
E6.5	6	2	2	5	0	2	6	3	2	1	2	2	2	1	1
E7.5	7	1	3	4	0	3	3	4	3	1	2	4	1	2	2
Totals															
E6.5	8 / 15		2 / 2	5 / 9		2 / 2	9 / 16		2 / 2	3 / 6		2 / 2	3 / 5		1 / 1
E7.5	8 / 16		3 / 3	4 / 7		3 / 3	7 / 15		3 / 3	3 / 5		4 / 4	3 / 6		2 / 2
Total (%)	16 / 31 (52%)		5 / 5 (100%)	9 / 16 (56%)		5 / 5 (100%)	16 / 31 (52%)		5 / 5 (100%)	6 / 11 (55%)		6 / 6 (100%)	6 / 11 (55%)		3 / 3 (100%)
E5.5 / E5.75	n / a			n / a			SExp	DR	Abs	n / a			n / a		
Total (%)							13 / 16 (81%)								

Proportion of dsBmp4 RNA-electroporated embryos with defective expression of indicated marker genes.