

Supporting Information. Melanie M. Pollierer, Thomas Larsen, Anton Potapov, Adrian Brückner, Michael Heethoff, Jens Dyckmans, Stefan Scheu. 2019. Compound-specific isotope analysis of amino acids as a new tool to uncover trophic chains in soil food webs. *Ecological Monographs*.

Appendix S5

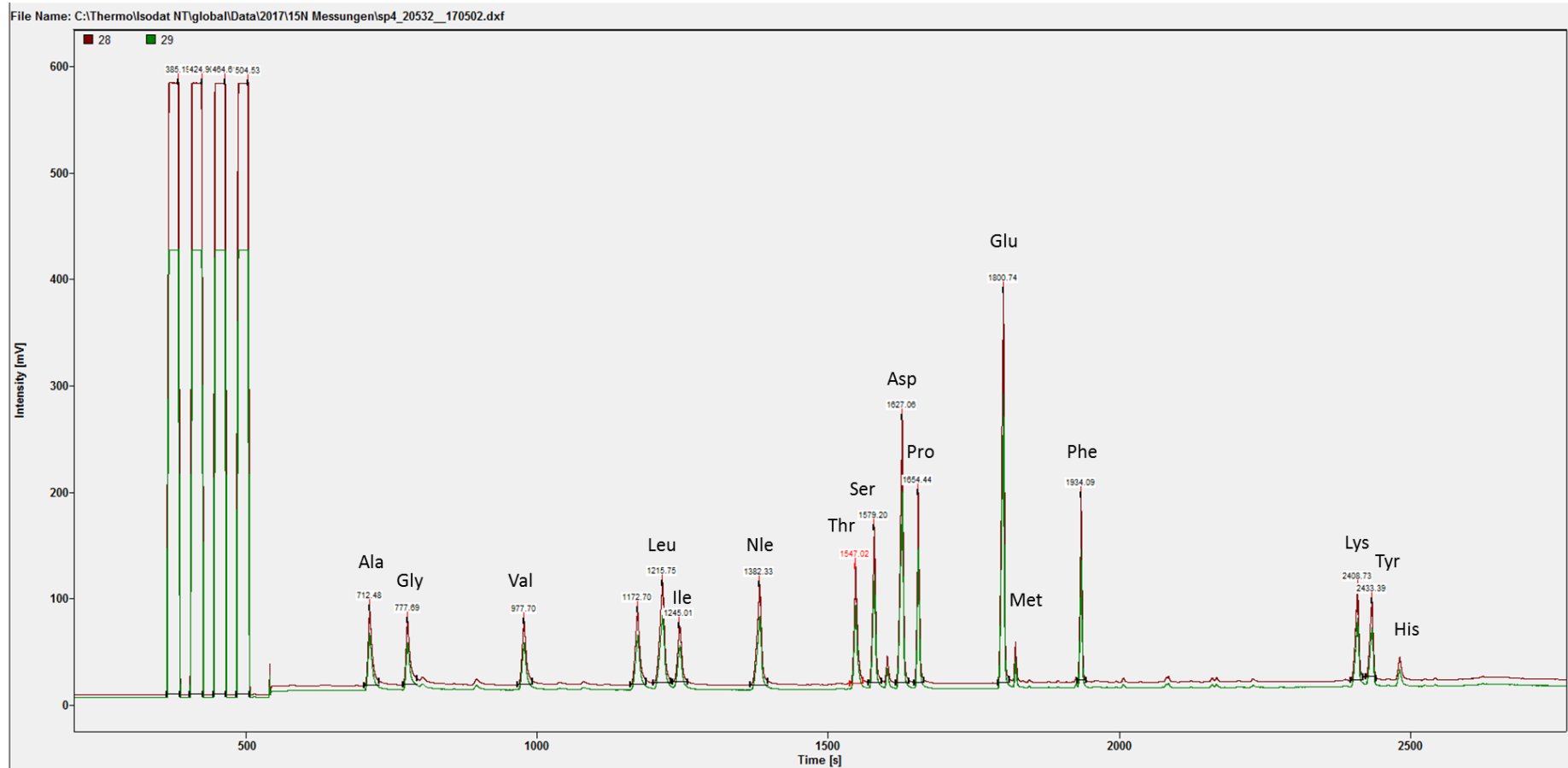


Figure S1 Chromatogram of amino acid $^{14}\text{N}/^{15}\text{N}$ measurement by GC-IRMS exemplary for a spider.

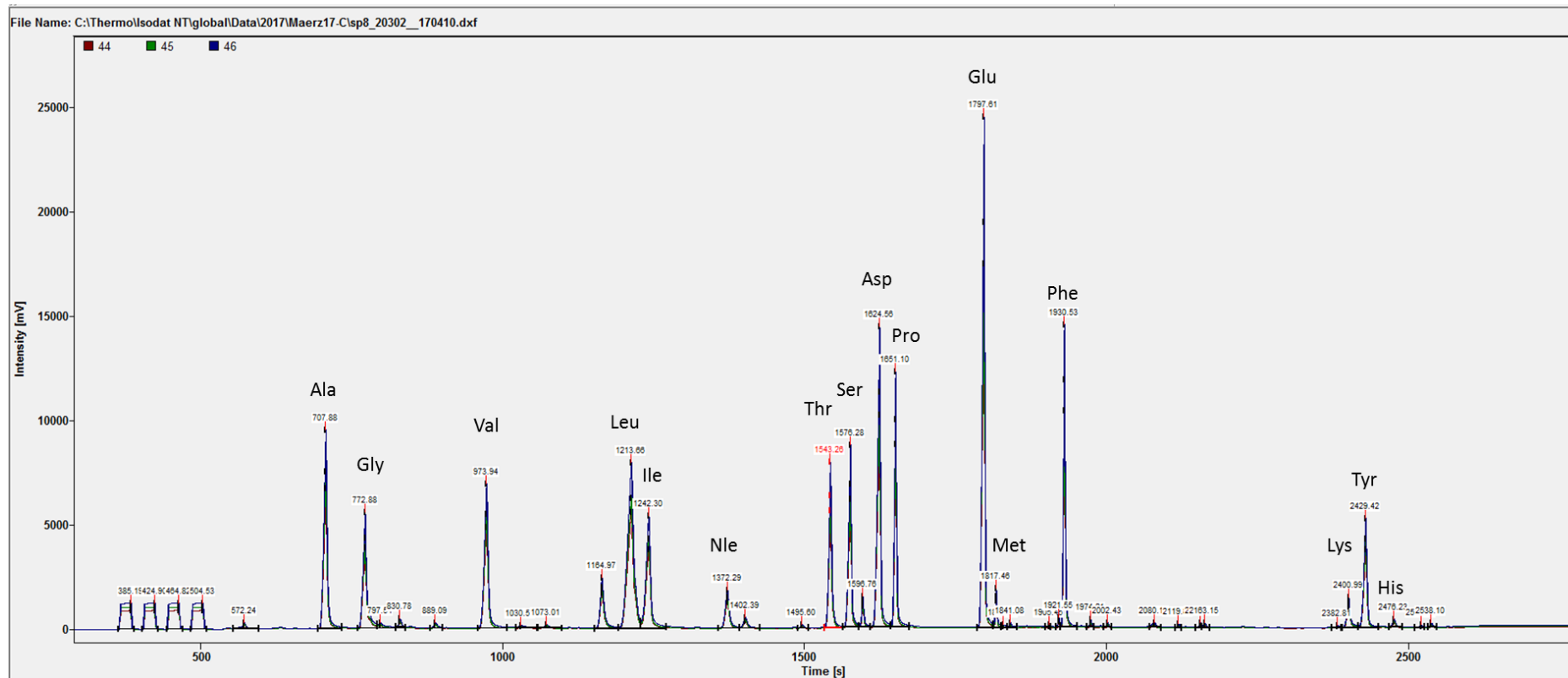


Figure S2 Chromatogram of amino acid $^{12}\text{C}/^{13}\text{C}$ measurement by GC-IRMS exemplary for a spider.