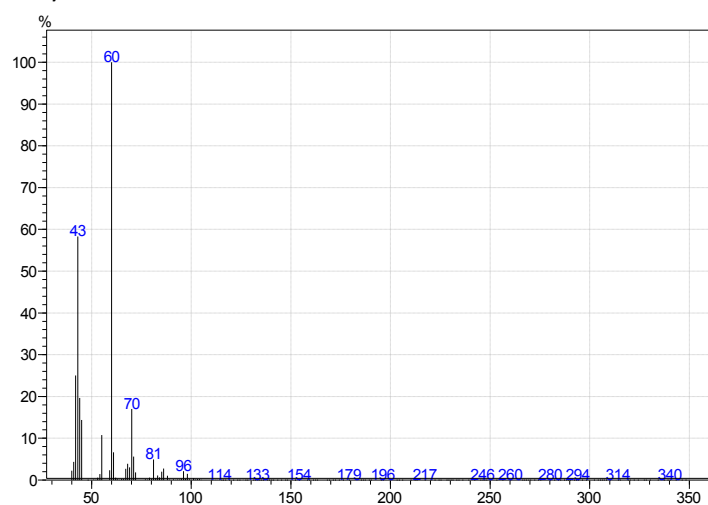
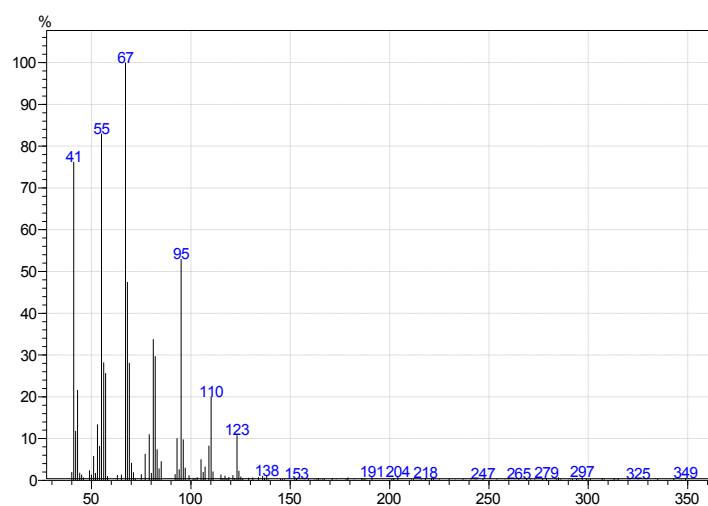


Supplementary Material 2: Mass spectra of tentatively assigned or unknown compounds in gas chromatographic analyses of fresh dung samples. Sequence of listed spectra is equal to table S3.

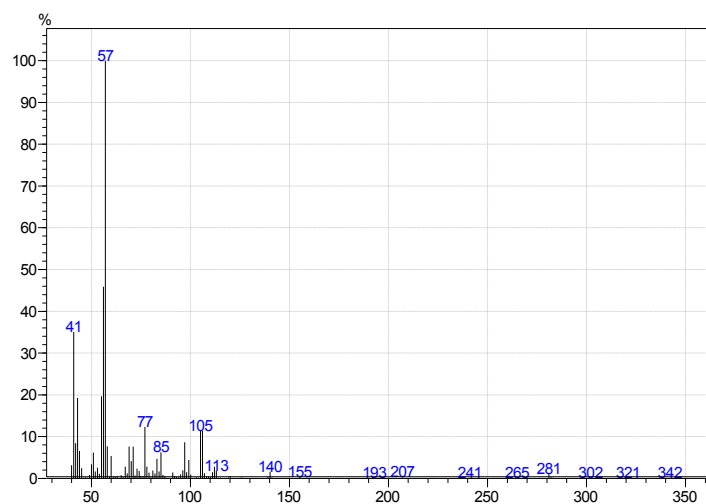
methyl-butric acid



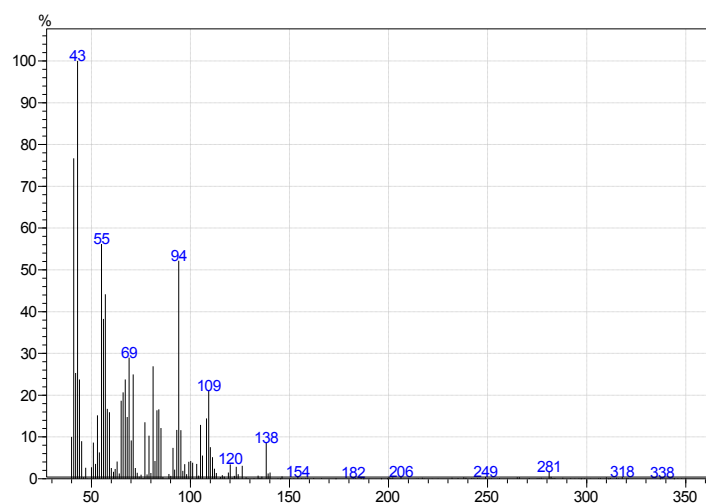
unknown 1



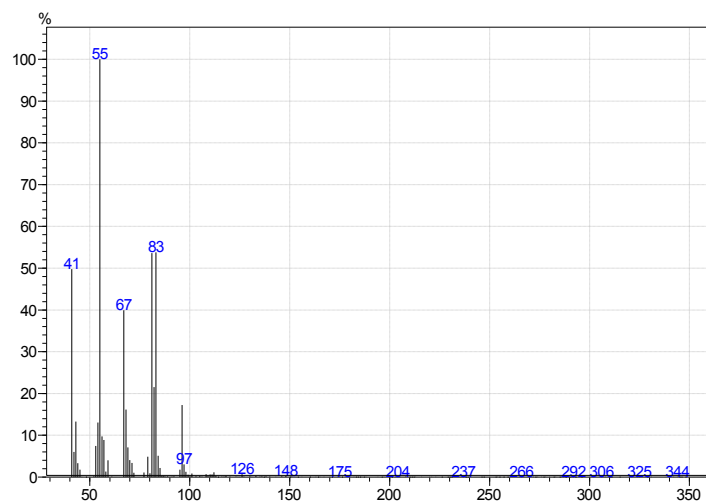
methyl-heptane



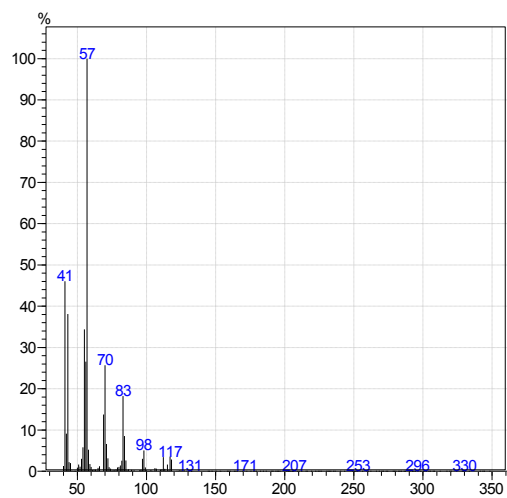
unknown 2



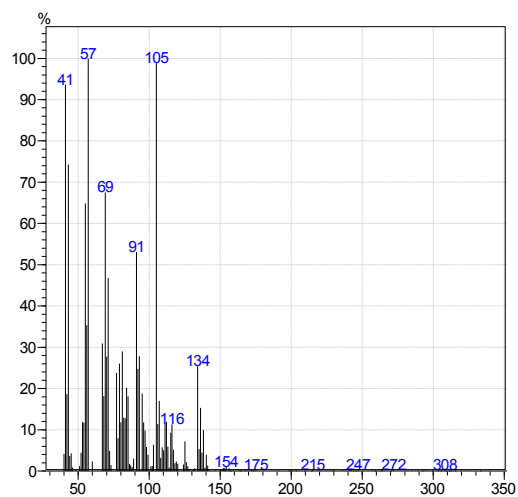
cyclohexanemethanol



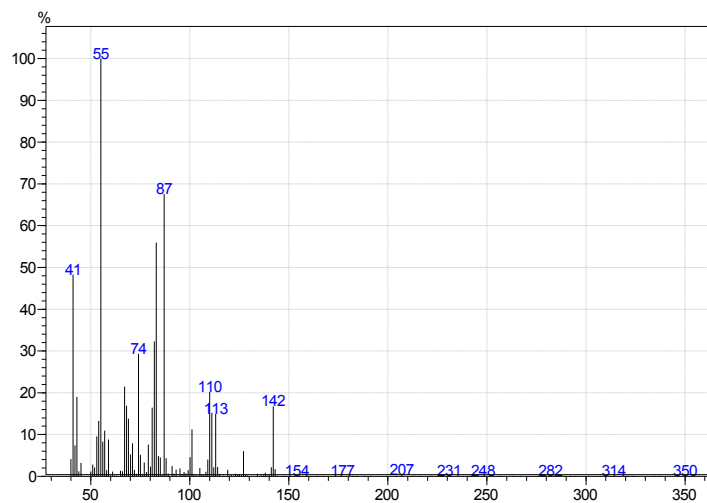
unknown 3



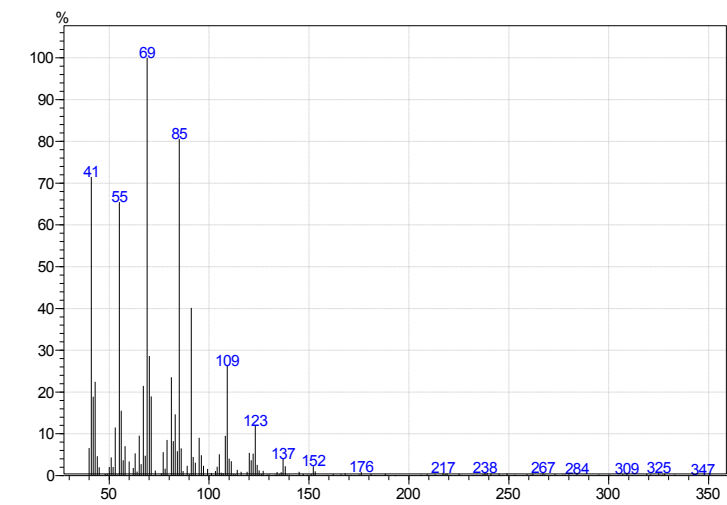
monoterpene 1



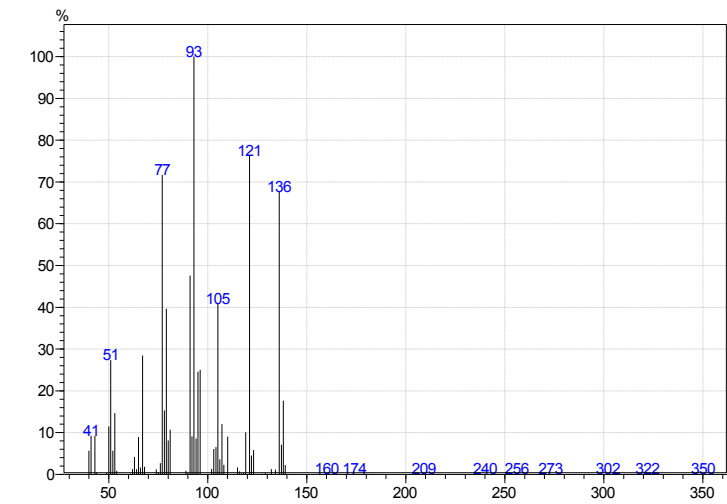
methyl cyclohexanoate



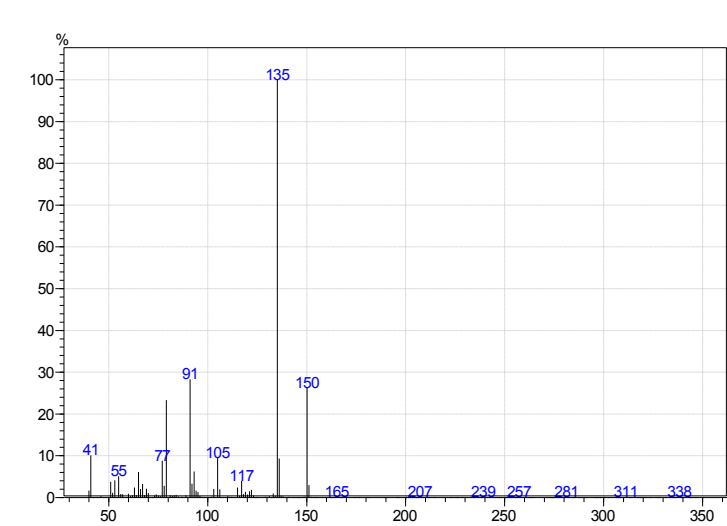
unknown 4



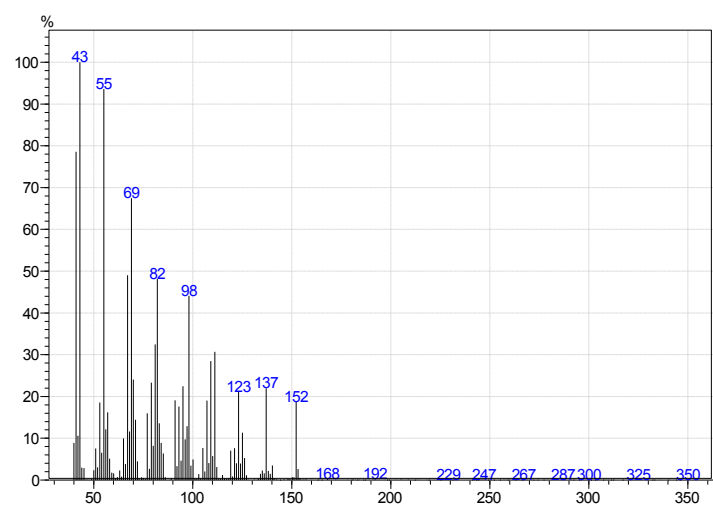
monoterpene 2



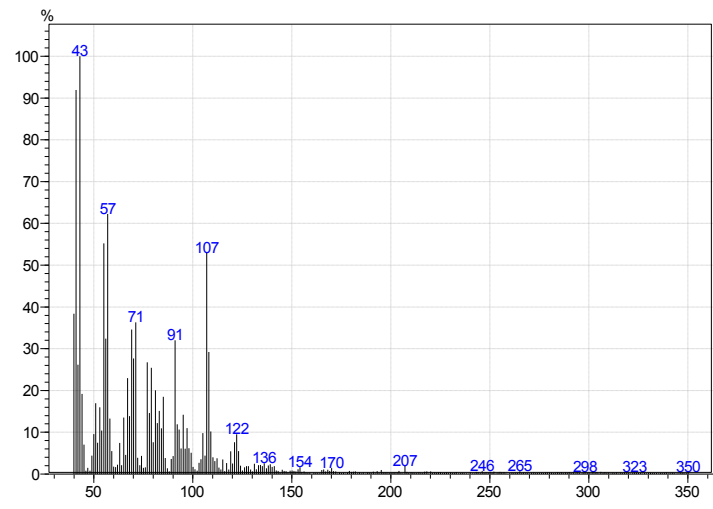
unknown 5



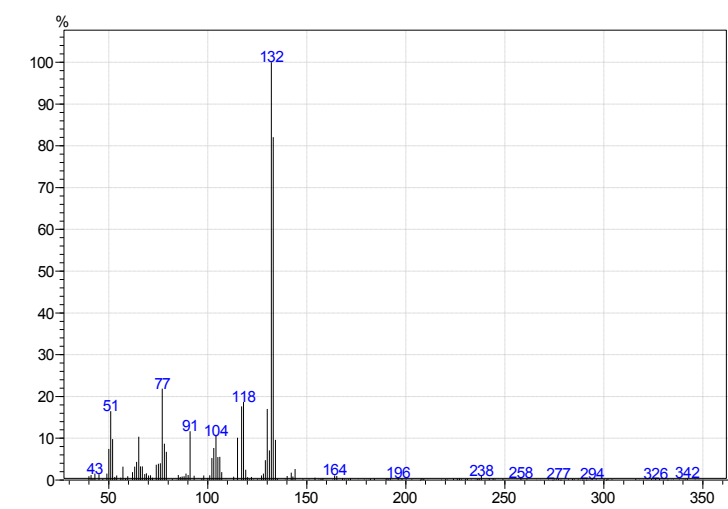
unknown 6



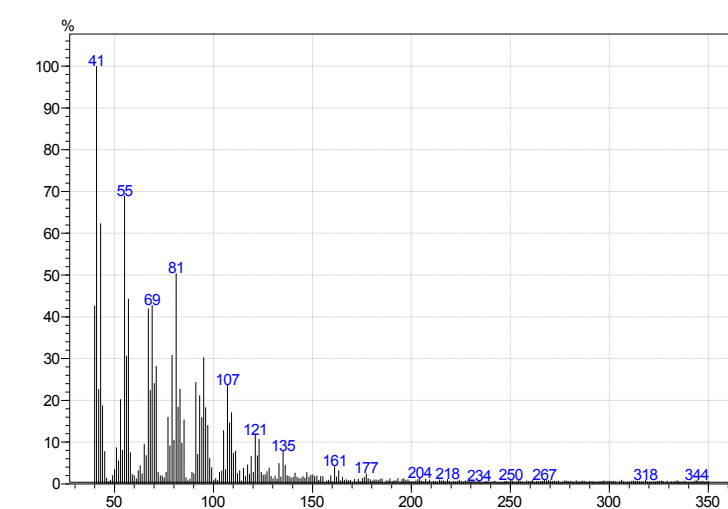
unknown 7



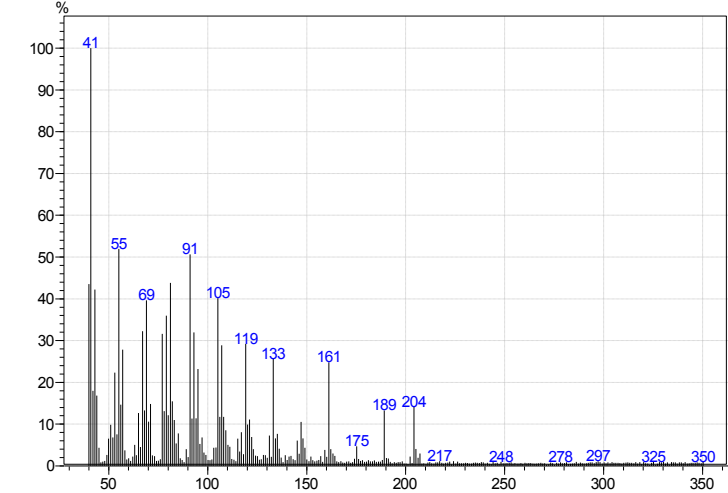
tetrahydroquinoline



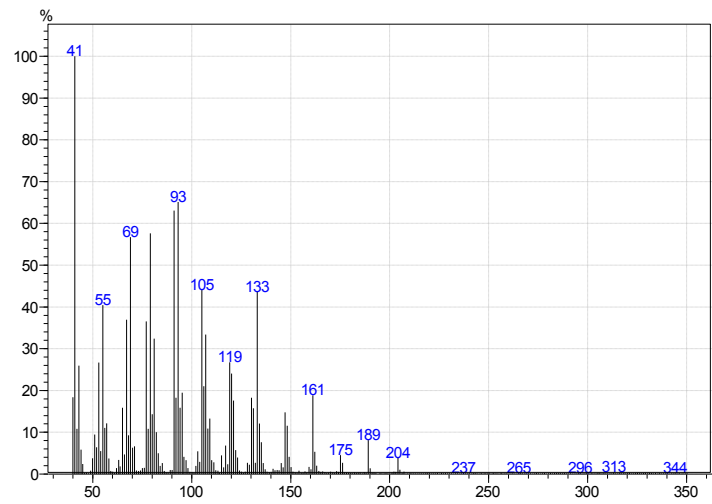
unknown 8



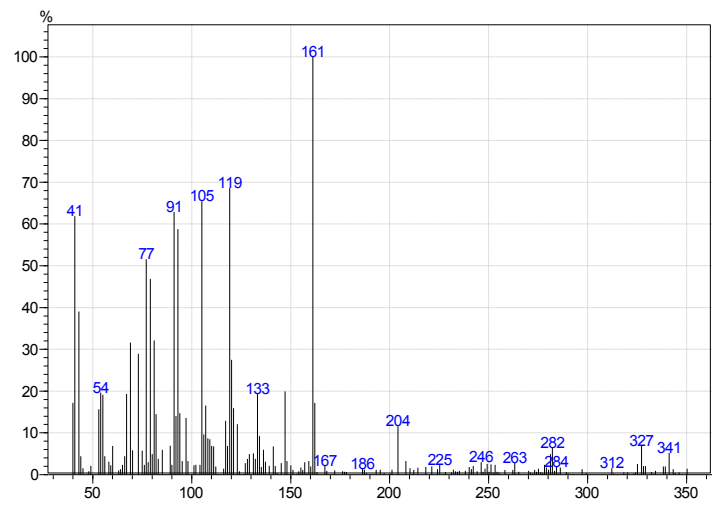
sesquiterpene 1



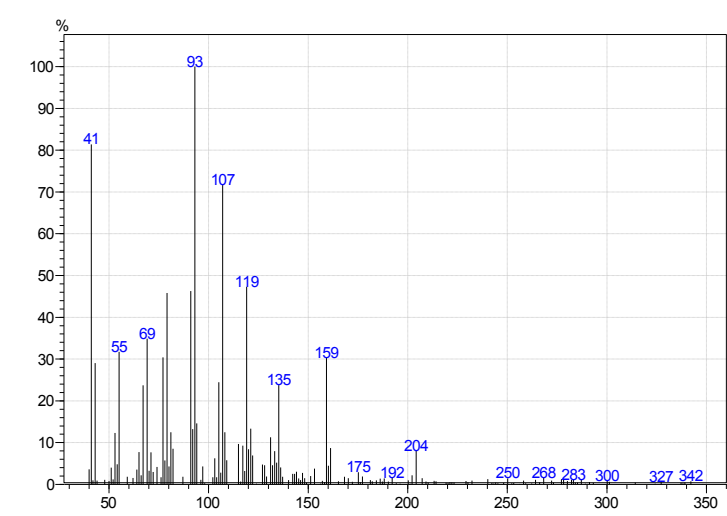
sesquiterpene 2



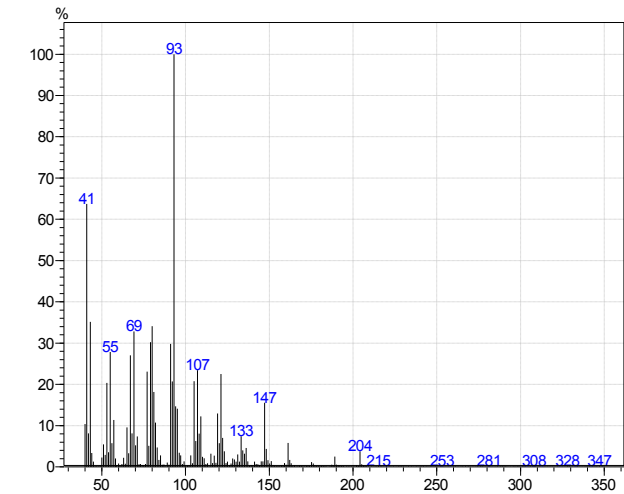
sesquiterpene 3



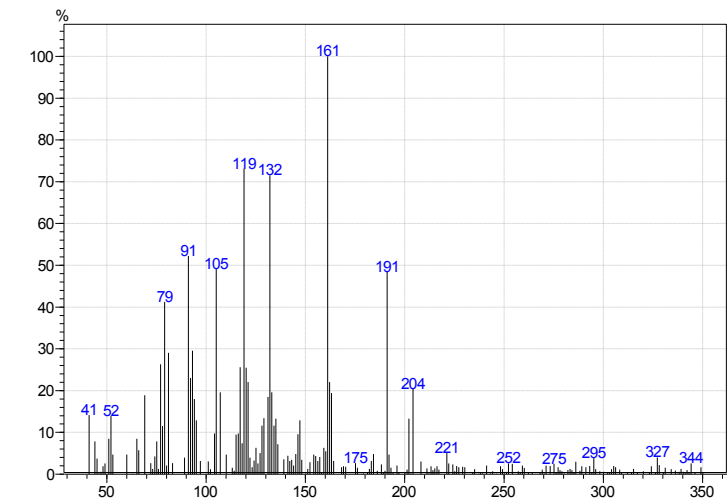
sesquiterpene 4



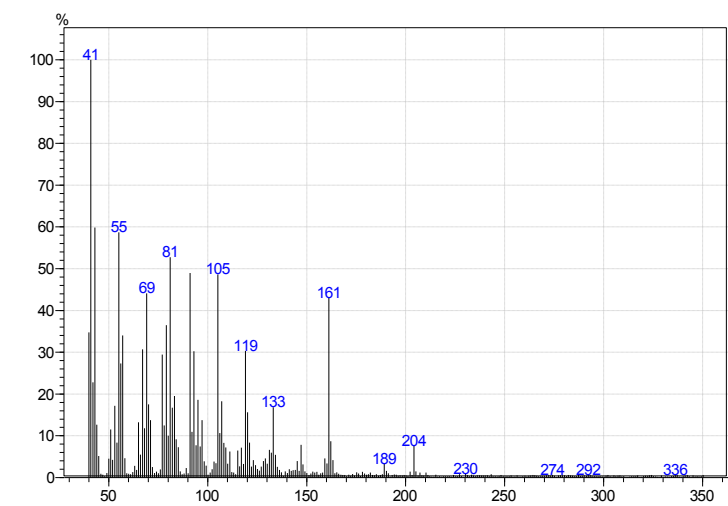
sesquiterpene 5



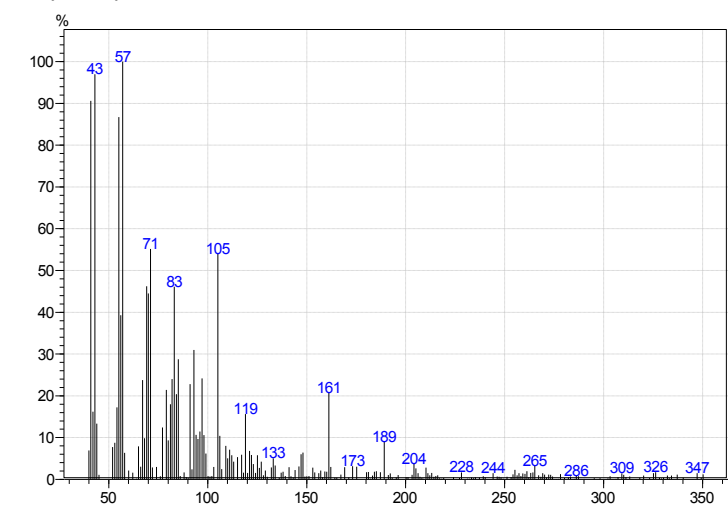
sesquiterpene 6



sesquiterpene 7



sesquiterpene 8



sesquiterpene 9

